

# Dimora Samuele

**Region:** Veneto **Sleeps:** 12

---

## Overview

Dimora Samuele is a San Marco townhouse that seamlessly blends classic Venetian grandeur with contemporary elegance. Accommodating twelve guests across six ensuite bedrooms, this distinguished residence is nestled in the refined San Samuele quarter, a serene and cultured area once frequented by Byron, Casanova, and Veronese, and now cherished by discerning visitors.

Revived over three years by a skilled team, the interiors offer a captivating mix of colour, texture, and mood: gilded portraits, terrazzo floors, striking wallpapers, and plush velvets, all beautifully arranged across three spacious floors. Dine under a Murano chandelier, relax on an ochre velvet sofa with a Campari, or enjoy a game in the pool room after dark. Outside, galleries line the tranquil Salizada San Samuele, guiding you towards the Grand Canal, Palazzo Grassi, and Campo Santo Stefano. Whether hosting a celebration, enjoying a cultural retreat, or simply appreciating beautiful surroundings, Dimora Samuele is a rare Venetian gem.



## Facilities

Air-Con • New Villas 2025 • Easy By Train • Wi-Fi/Internet • City Homes & Apartments • Ideal for Kids • Ideal for Teens • Walk to Restaurant • <1hr to Airport • Washing Machine • Dishwasher • Microwave • Coffee Machine • Hairdryer • All Bedrooms En-Suite • TV • Heating • Outdoor Pursuit & Activities • Tourist Towns & Villages • Historical Sites

# Interior & Grounds

## Ground Floor

- Entrance hallway
- Pool room with pool table
- Storage cupboard
- Laundry room with utility sink and washing machine/dryer

## First Floor

- Bedroom 1: Double bed, concealed wardrobe, contemporary chaise longue and ensuite
- Bedroom 2: Twin beds (Double on request), built-in wardrobe and ensuite bathroom

## Second Floor

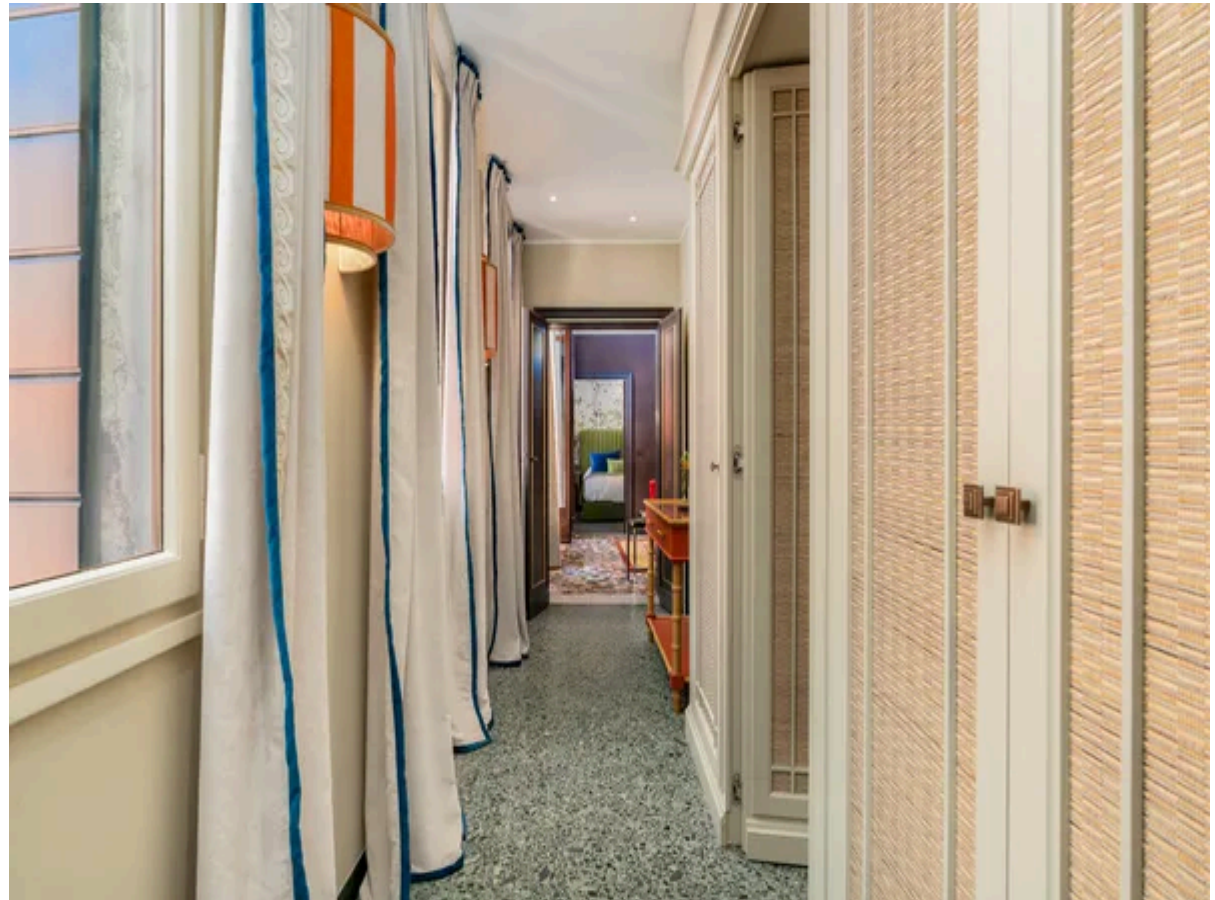
- Elegant sitting/TV room with Venetian terrazzo flooring, velvet sofa and floor-to-ceiling French doors opening onto a wrought iron Juliet balcony
- Semi-separate dining space
- Well-equipped kitchen/breakfast room
- Guest bathroom dressed in black marble and Cole & Son's Afrika Kingdom wallpaper
- Bedroom 3: Double bed, built-in wardrobe and ensuite bathroom
- Bedroom 4: Twin beds (Double on request), built-in wardrobe and ensuite bathroom
- Bedroom 5: Double bed, wardrobes, ensuite bathroom with luxurious bathtub
- Bedroom 6: Double bed (Twins on request), mirrored wardrobe and ensuite bathroom

## Exterior

- Wrought iron Juliet balcony

## **Additional Facilities**

- SMEG and Siemens appliances
- Traditional garnet-red Murano glass chandelier
- Pool table
- Integrated wine cooler



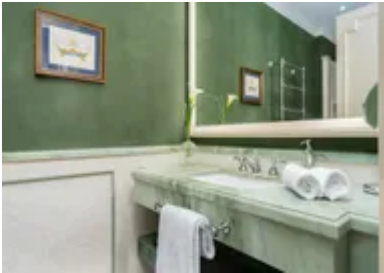
# Location & Local Information

Dimora Samuele is nestled in the artistic and quietly prestigious San Samuele district, offering one of the most desirable addresses in Venice. Just moments from the Grand Canal and within walking distance of both the Accademia Bridge and Rialto, the area is wonderfully serene yet superbly connected.

Here, hidden galleries, textile boutiques, and antique ateliers share space with old-world osterie, refined perfumeries, and secret courtyards. It's a neighbourhood that whispers elegance rather than shouts, a place to linger with an espresso or browse Venetian craftsmanship far from the crowds. Key landmarks such as Palazzo Grassi, Campo Santo Stefano, and St. Mark's Square are just a short amble away. Nearby vaporetto stops at San Samuele and Sant' Angelo, plus the traghetto at Garzoni, ensure the rest of Venice is easily within reach.

## Local Amenities

Nearest Airport	Venice Airport (10 km)
Nearest Bar/Pub	Corner Pub (650 m)
Nearest Restaurant	Impronta Restaurant Venice (650 m)
Nearest Supermarket	Alimentari De Rossi Paolo (110 m)
Nearest Train Station	Venezia Santa Lucia (2 km)
Sightseeing	Gallerie dell'Accademia (450 m)



## What we love

- Six striking ensuite bedrooms, each individually styled with rich colour, bespoke furnishings and thoughtful detail.
- The generous and glamorously eclectic living and dining spaces, perfect for entertaining or relaxing in refined comfort.
- Hidden away just off the art-filled Salizada San Samuele, moments from galleries, boutiques and Grand Canal crossings!

## What you should know...

- Dimora Samuele is spread over three floors and there is no lift, guests should be comfortable with internal stairs.
- The first-floor bedrooms are quieter and cosier, while the main social and sleeping quarters are located on the upper floor.



# Terms & Conditions

- **Security deposit:** €800 charged to client's credit card as a pre-authorisation two weeks before arrival and refunded two weeks after departure, subject to full inspection.
- **Arrival time:** 3 - 8 pm
- **Departure time:** 11 am
- **Energy costs included?:** Yes, included in the rental price.
- **Linen & towels included?:** Yes, included in the rental price.
- **Pets welcome?:** Not allowed.
- **Changeover day:** Flexible.
- **End of stay cleaning available?:** Not included in the rental price, extra €280 to be paid with the balance due.
- **Smoking Allowed?:** Smoking & Vaping not permitted.
- **Minimum stay:** 3 - 5 nights, depending of season. All other durations on request.
- **Heating costs included?:** Yes, included in the rental price.
- **Tax:** There is a city tax due to be paid locally which is not included in the rental rate. The amount will be confirmed by your onsite representative when you arrive.
- **Internet access?:** Wi-Fi internet connection included.