

# Apartment Nidal

**Region:** United Arab Emirates **Sleeps:** 6

---

## Overview

Tucked into the sandy shores of Palm Jumeirah's exclusive Al Dabas Shoreline, Apartment Nidal is a bright, breezy three-bedroom escape where beach life and city chic blend in perfect harmony. As you walk through its arched entrance hallway, the calming palette of sand tones and natural light guides you into a beautifully arranged living area, think oversized corner sofas, textured rugs, and floor-to-ceiling windows that frame the tranquil blue of the Arabian Gulf.

The fully equipped kitchen, with granite countertops, modern appliances, and a breakfast bar, makes self-catering effortless. Slide open the balcony door and enjoy a morning coffee with sweeping views over the private beach, dotted with palm trees and sun loungers. The bedrooms are elegantly appointed, offering restful retreats with hotel-quality bedding and thoughtful storage. The master suite boasts its own private balcony and a marble-finished bathroom complete with a walk-in shower and soaking tub.

Outside, you'll find direct access to a private stretch of beach, complete with sunbeds and umbrellas, alongside shared pool facilities and a relaxed beach club. It's a peaceful base for families or groups looking to enjoy Dubai's coast in comfort and style.



## Facilities

Lift • New Villas 2025 • Laptop Friendly Workspace • Beachfront • Shared Pool • Walk to Beach • Golf Nearby • Air-Con • Beach Nearby • City Homes & Apartments • On-Site Concierge • Ideal for Babies & Toddlers • Ideal for Kids • Ideal for Teens • Walk to Restaurant • <1hr to Airport • Washing Machine • Dishwasher • Microwave • Coffee Machine • Hairdryer • Smart TV • Canoeing/Kayaking • Outdoor Pursuit & Activities • Boat Trips

# Interior & Grounds

## Interior

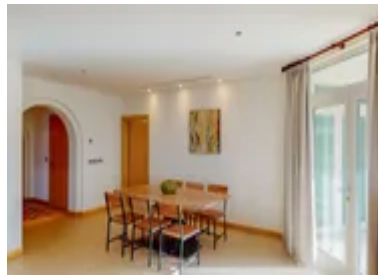
- Open plan living area
- Fully equipped kitchen
- Dining area
- Master Bedroom 1: Double bed, ensuite bathroom and private balcony
- Bedroom 2: Queen-size bed
- Bedroom 3: Twin beds
- Bathroom

## Exterior

- Balcony

## **Additional Facilities**

- Shared swimming pool
- Beach club
- Private beach
- 24-hour security



# Location & Local Information

Located along the trunk of the world-renowned Palm Jumeirah, Apartment Nidal enjoys a prime beachfront setting with calm waters and iconic city views. This gated residential community is perfect for travellers wanting a mix of leisure and adventure, with direct access to the beach and close proximity to high-end attractions.

Just minutes away, Aquaventure Waterpark offers a thrilling day out for all ages, while The View at The Palm delivers jaw-dropping 360° panoramas across the city skyline and Arabian Gulf. Foodies will love being a stone's throw from stylish beachfront dining at Peaches & Cream or the Mediterranean-inspired Riva Beach Club. Whether you're looking to bask on the beach or venture into Dubai's buzzing nightlife, this location has it all within reach.

## Local Amenities

|                        |   |
|------------------------|---|
| Nearest Airport        | Dubai Airport<br>(34 km)                    |
| Nearest Amusement Park | AquaFun Dubai Water Park<br>(11 km)         |
| Nearest Bar/Pub        | McGettigan's Factory The Palm<br>(1 km)     |
| Nearest Beach          | Palm Jumeirah Beach<br>(50 m)               |
| Nearest Golf           | Topgolf Dubai<br>(8 km)                     |
| Nearest Restaurant     | Peaches & Cream<br>(100 m)                  |
| Nearest Supermarket    | Choithrams Palm Azure Residences<br>(400 m) |



## What we love

- A private balcony with seating and panoramic views of the Arabian Gulf!
- Direct access to a pristine private beach and beach club facilities.
- A short walk to beachfront restaurants and quick access to iconic attractions like Aquaventure and The View.

## What you should know...

- The apartment is located in a residential complex, so guests are kindly asked to respect local noise policies.
- Some amenities, such as beach loungers or pool access, may be shared with other guests or residents at peak times.

# Terms & Conditions

- **Security deposit:** Please note that our local partner requires online check-in verification. As part of this process, a monetary security deposit will be requested and must be paid directly to them.
- **Arrival time:** 3 pm
- **Departure time:** 11 am
- **Energy costs included?:** Yes, included in the rental price.
- **Linen & towels included?:** Yes, included in the rental price.
- **Pets welcome?:** Not allowed.
- **End of stay cleaning available?:** Not included in the rental price; extra cost of £102.03 is to be paid with the balance due.
- **Smoking Allowed?:** Smoking & Vaping are not permitted.
- **Minimum stay:** 5 nights. All other durations on request.
- **Heating costs included?:** Not available on this property.
- **Tax:** Please note that a tourist tax of £6.48 per room per night will be charged with the balance due.
- **Internet access?:** Wi-Fi internet access included.