

Apartment Joud

Region: United Arab Emirates **Sleeps:** 4

Overview

Tucked within the exclusive Al Hamri building of Palm Jumeirah's Jumeirah Shoreline, Apartment Joud is a beautifully appointed two-bedroom retreat that offers a blend of beachside calm and modern style. From the moment you step through the door, you're greeted by an open and airy living space dressed in soft tones, contemporary furnishings, and bathed in natural light. The lounge features plush seating, a sleek smart TV, and sliding doors leading out onto a spacious furnished balcony with sweeping views over the palm fronds and Dubai Marina skyline beyond.

The dining area comfortably seats six beneath artistic lighting, while the modern kitchen, complete with granite worktops, dishwasher, and coffee machine, makes self-catering effortless. Both bedrooms are en-suite, with the master boasting a king-sized bed and walk-in shower, and the second room featuring twin beds and ample wardrobe space. With high-speed Wi-Fi and hotel-grade linens and amenities, Apartment Joud is designed for a comfortable, connected, and stylish stay.

Outside your door lies the Shoreline's private beach, landscaped pools, a state-of-the-art fitness centre, and chic beachfront dining, all set against the golden backdrop of the iconic Palm Jumeirah.

Facilities

Wi-Fi/Internet • New Villas 2025 • Laptop Friendly Workspace • Beachfront • Lift • Shared Pool • Walk to Beach • Golf Nearby • Beach Nearby • Air-Con • City Homes & Apartments • On-Site Concierge • Ideal for Babies & Toddlers • Ideal for Kids • Ideal for Teens • Walk to Restaurant • <1hr to Airport • Washing Machine • Dishwasher • Microwave • Coffee Machine • Hairdryer • All Bedrooms En-Suite • Smart TV • Canoeing/Kayaking • Outdoor Pursuit & Activities • Boat Trips



Interior & Grounds

Interior

- Open Plan Living and Dining Area
- Fully equipped kitchen
- Dining table for six
- Master Bedroom: King-size bed, ensuite bathroom
- Bedroom 2: Twin beds, ensuite bathroom

Exterior

- Furnished balcony

Additional Facilities

- Private beach access
- Multiple shared swimming pools
- State-of-the-art fitness centre
- Exclusive beach clubs
- Fine dining restaurants and chic lounges within the community
- Luxurious hotel-grade amenities, including fluffy towels and crisp linens



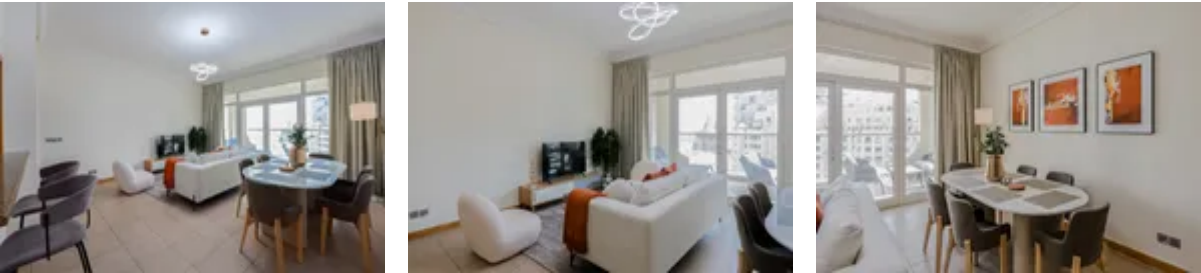
Location & Local Information

Apartment Joud is perfectly placed along the trunk of Palm Jumeirah, granting easy access to Dubai's coastal highlights while offering peaceful, sun-drenched surroundings. The apartment is mere moments from the shore, making it ideal for morning swims and sunset strolls. Guests will find the Palm Monorail close by, providing seamless travel to Atlantis, Nakheel Mall, and beyond.

Whether you're seeking fine dining, retail therapy, or adventure, everything is within reach. Atlantis and Aquaventure Waterpark are a five-minute drive away, while The View at The Palm and the culinary delights of West Beach offer indulgence for every taste. With excellent road connectivity via Sheikh Zayed Road, Downtown Dubai and the Burj Khalifa are also just a short journey away.

Local Amenities

Nearest Airport	Dubai Airport (34 km)
Nearest Amusement Park	AquaFun Dubai Water Park (11 km)
Nearest Bar/Pub	McGettigan's Factory The Palm (1 km)
Nearest Beach	Palm Jumeirah Beach (50 m)
Nearest Golf	Topgolf Dubai (8 km)
Nearest Restaurant	Peaches & Cream (100 m)
Nearest Supermarket	Choithrams Palm Azure Residences (400 m)



What we love

- Furnished balcony with stunning views of the Marina skyline and iconic Palm Jumeirah towers!
- Access to exclusive beach clubs, multiple pools, a fitness centre and beach lounges.
- Proximity to the Palm Monorail for car-free access to malls, restaurants and attractions.

What you should know...

- While the balcony offers wonderful city views, it faces towards the inner palm rather than direct beachfront.
- Pool and beach access is communal, so peak times may see shared usage with other residents.

Terms & Conditions

- **Security deposit:** Please note that our local partner requires online check-in verification. As part of this process, a monetary security deposit will be requested and must be paid directly to them.
- **Arrival time:** 3 pm
- **Departure time:** 11 am
- **Energy costs included?:** Yes, included in the rental price.
- **Linen & towels included?:** Yes, included in the rental price.
- **Pets welcome?:** Not allowed.
- **Changeover day:** Flexible.
- **End of stay cleaning available?:** Not included in the rental price; extra cost of £79.36 is to be paid with the balance due.
- **Smoking Allowed?:** Smoking & Vaping are not permitted.
- **Minimum stay:** 5 nights. All other durations on request.
- **Heating costs included?:** Not available on this property.
- **Tax:** Please note that a tourist tax of £6.48 per room per night will be charged with the balance due.
- **Internet access?:** Wi-Fi internet access included.