

Apartment Osmat

Region: United Arab Emirates **Sleeps:** 6

Overview

Apartment Osmat invites you to indulge in a warm, tranquil retreat nestled within the vibrant Jumeirah Shoreline community at Al Sultana, Palm Jumeirah. This beautifully appointed ground-floor apartment combines elegance, comfort, and convenience, offering a private oasis just moments from the beach. Perfect for families, the apartment comfortably accommodates up to six guests, with two refined bedrooms, a maid's room, and inviting communal living spaces.

As you step inside, a light-filled open-plan layout welcomes you with sophisticated styling, plush furnishings, and high-spec finishes throughout. The fully fitted kitchen boasts a breakfast island, modern appliances, and a coffee machine for relaxed mornings. Unwind on the comfortable sofa or catch up on your favourite shows with the Smart TV. Large glass doors open directly onto a charming private patio, ideal for al fresco dining or simply soaking up the serene surroundings.

The two bedrooms offer a calming escape after sun-filled days, including a grand master suite with a walk-in shower and luxury ensuite. Guests also benefit from hotel-quality linens, multiple Smart TVs, and a separate maid's room with its own en-suite. With access to the Shoreline's exclusive beach, pools, fitness centre and more, Apartment Osmat is a luxurious base for your Palm Jumeirah stay.

Facilities

Wi-Fi/Internet • Golf Villa • Washing Machine • City Homes & Apartments • Coffee Machine • Hairdryer • Boat Trips • Beachfront • Canoeing/Kayaking • Air-Con • Walk to Beach • Laptop Friendly Workspace • New Villas 2025 • Beach Nearby • Shared Pool • On-Site Concierge • Ideal for Babies & Toddlers • Ideal for Kids • Ideal for Teens • Walk to Restaurant • <1hr to Airport • Dishwasher • Microwave • All Bedrooms En-Suite • Smart TV • Parking Space • Outdoor Pursuit & Activities



Interior & Grounds

Interior

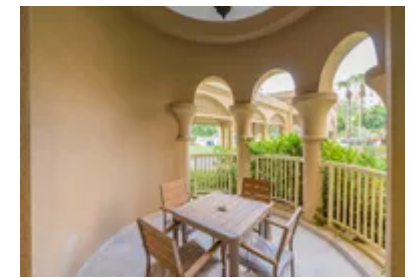
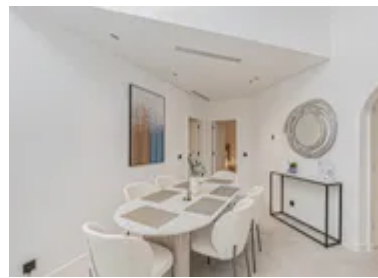
- Open Plan Living and Dining Area
- Fully equipped kitchen
- Kitchen island/breakfast bar
- Dining table for six
- Master bedroom: King-size bed, Smart TV, ensuite bathroom and walk-in wardrobe
- Bedroom 2: Queen-size bed, sofa bed, Smart TV
- Bathroom
- Maid's Bedroom: Single bed, ensuite bathroom

Exterior

- Ground floor patio
- Patio table and chairs

Additional Facilities

- Beach access
- Multiple swimming pools
- Fitness centre
- Exclusive beach clubs
- Restaurants/bars and chic lounges within the community
- Valet parking
- Luxurious hotel-grade amenities, including fluffy towels and crisp linens



Location & Local Information

Al Sultana is situated in the heart of Palm Jumeirah’s Shoreline Residences, offering unbeatable proximity to Dubai’s coastline and world-renowned attractions. This beachside location places guests within walking distance of private sands, family parks, stylish restaurants and essential amenities like supermarkets and pharmacies.

The nearby Palm Monorail provides easy access to hotspots such as Atlantis, Nakheel Mall, and The Pointe, while Sheikh Zayed Road allows for swift connections to Dubai Marina, Downtown, and the airport. Whether you're in the mood for thrilling water parks, upscale shopping, or simply lounging on the beach, this location promises a seamless mix of convenience and indulgence.

Local Amenities

Nearest Airport	Dubai Airport (34 km)
Nearest Amusement Park	AquaFun Dubai Water Park (11 km)
Nearest Bar/Pub	McGettigan's Factory The Palm (1 km)
Nearest Beach	Palm Jumeirah Beach (50 m)
Nearest Golf	Emirates Golf Club (Majlis) (9.5 km)
Nearest Restaurant	Peaches & Cream (100 m)
Nearest Supermarket	Choithrams Palm Azure Residences (400 m)



What we love

- Ground-floor patio perfect for morning coffees or relaxed outdoor meals.
- Two bedrooms plus maid's room and sofa bed, ideal for extended family stays.
- Just steps from the beach with access to Shoreline pools, beach clubs, and fitness centre.

What you should know...

- The apartment includes a sofa bed in the second bedroom, best suited for children or short stays.
- As a ground-floor unit, privacy on the patio may be limited during busier times of day.

Terms & Conditions

- **Security deposit:** Please note that our local partner requires online check-in verification. As part of this process, a monetary security deposit will be requested and must be paid directly to them.
- **Arrival time:** 3 pm
- **Departure time:** 11 am
- **Energy costs included?:** Yes, included in the rental price.
- **Linen & towels included?:** Yes, included in the rental price.
- **Pets welcome?:** Not allowed.
- **Changeover day:** Flexible.
- **End of stay cleaning available?:** Not included in the rental price; extra cost of £90.69 is to be paid with the balance due.
- **Smoking Allowed?:** Smoking & Vaping are not permitted.
- **Minimum stay:** 5 nights. All other durations on request.
- **Heating costs included?:** Not available on this property.
- **Tax:** Please note that a tourist tax of £6.48 per room per night will be charged with the balance due.
- **Internet access?:** Wi-Fi internet access included.