

Lime Samui

Region: Koh Samui Sleeps: 14

Overview

Set high in the emerald hills above Nathon, Lime Samui is an architectural statement wrapped in tropical stillness. Sleek lines, open-air living and an uninterrupted sweep of sea views define the experience, while every room is designed to draw your gaze outward, from the sunken lounge that spills onto the pool deck to the cinema room cocooned in plush recliners.

This three-level estate is made for togetherness and space in equal measure. Five sprawling ensuite bedrooms sleep up to fourteen guests, each one a private sanctuary with views over the Gulf of Thailand. On the terrace, a 22-metre infinity pool beckons, edged by sunbeds, shaded lounging areas and towering palms. A private spa suite, games room, home gym and even a rooftop bar ensure there's always somewhere to retreat or reconnect.

From sunrise yoga sessions on the deck to sunset cocktails above the island canopy, every moment at Lime Samui feels curated and calm. While the villa isn't beachfront, it more than makes up for it with cinematic panoramas, utter privacy and a full team of dedicated staff to elevate your stay.



Facilities

Villa • Boat Trips • Watersports • Private Pool • Air-Con • Maid Service Included • Ideal for Teens • Cots (Cribs) • Chef/Cook Available • Beach Nearby • All Bedrooms En-Suite • Ground Floor Bed & Bath • <1hr to Airport • Parking Space • Wi-Fi/Internet • Seaview • BBQ • Coffee Machine • Outstanding Landscapes • Hairdryer • Outdoor Pursuit & Activities • Tourist Towns & Villages • TV • Laptop Friendly Workspace • Indoor Games • Gym/Fitness Room • Hot Tub • Dishwasher • Microwave • Safety Deposit Box • Home Cinema • Heating • Caretaker/Owner on Site • Pre-Stocked Fridge Available • Spa Treatments Available • Babysitting Available • On-Site Concierge • Transfers Included • Breakfast Included • High Chair(s) • Fenced Grounds

Interior & Grounds

Lower Ground Floor

- Cinema room
- Library
- Massage area

Ground Floor

- Bedroom 1: King-size bed, ensuite bathroom, covered balcony
- Bedroom 2: King-size bed, ensuite bathroom, covered balcony
- Gym

First Floor

- Living, Dining, and Recreation area with sunken lounge, adjacent dining space and polished Corian bar
- Fully equipped Western kitchen
- Bedroom 3: King-size bed, ensuite bathroom

Second Floor

- Bedroom 4: King-size bed, ensuite bathroom
- Bedroom 5: 2 Queen-size beds, ensuite bathroom

Exterior Grounds

- 22m infinity pool
- BBQ Area
- Outdoor kitchen
- Various terraces
- Covered balconies
- Outdoor dining area

Additional Facilities

- Private Cinema
- Life Fitness Gym with TRX[®]
- Private Spa
- Office Workspace
- Games Room/Pool Table
- Kayaks
- Mountain Bikes
- 7-Seater SUV & Driver (on standby and discounted vs taxis)



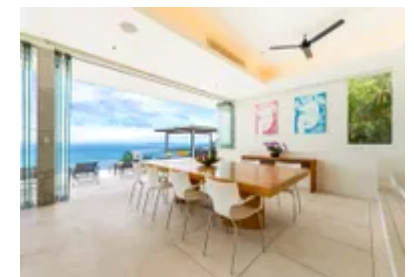
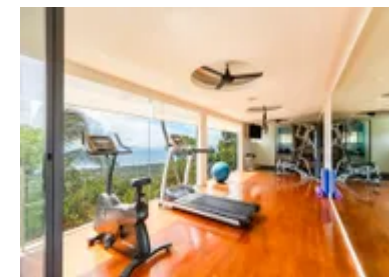
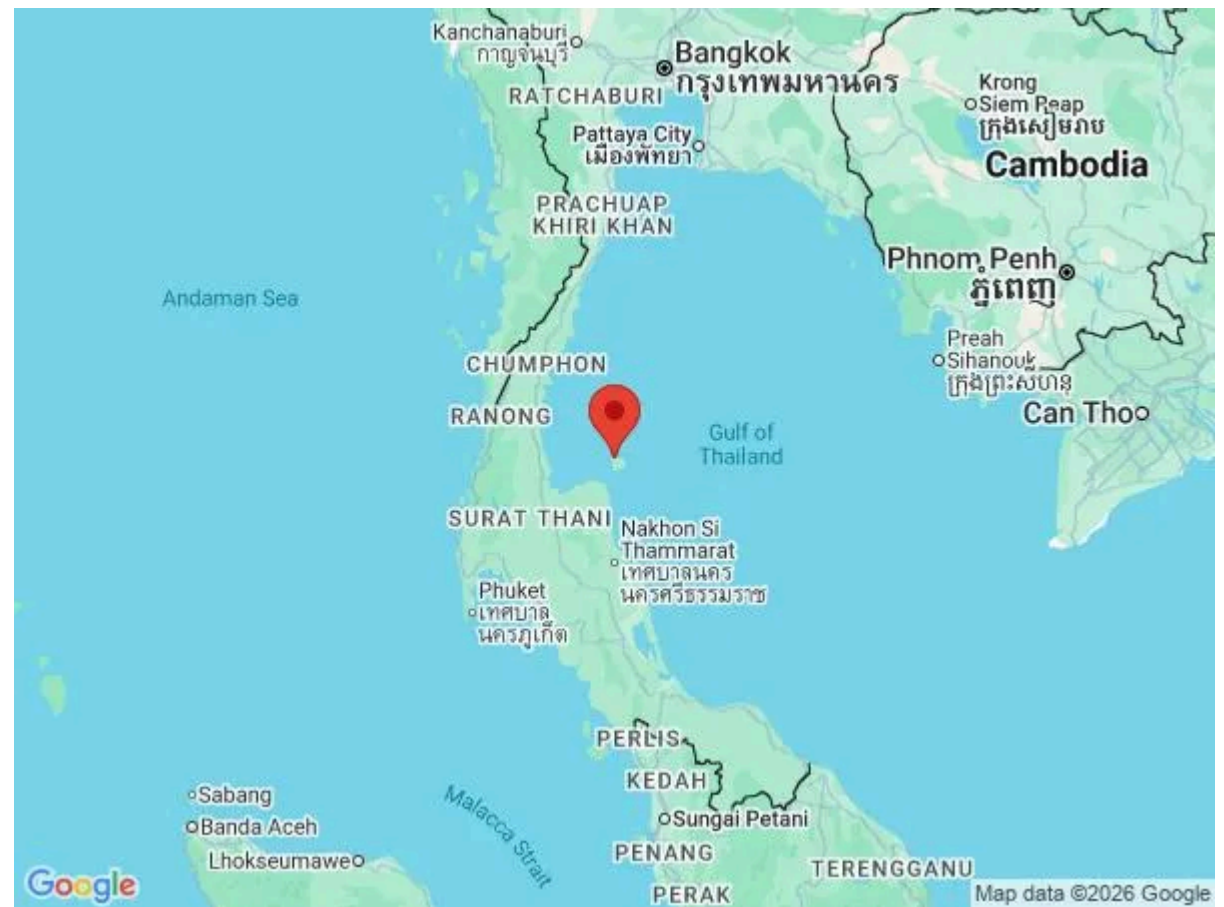
Location & Local Information

Tucked into the hillside above Nathon, Lime Samui offers complete privacy with panoramic access to the island's west coast. Just a fifteen-minute drive from the charming fishing port of Nathon, guests can wander local markets, sample authentic Thai fare or hop on a ferry to neighbouring islands. A short drive south reveals Coconut Beach, a peaceful crescent of golden sand and calm water ideal for lazy afternoons and beachside massages.

Koh Samui's west coast is known for its quiet charm, unhurried pace and world-class sunsets. From kayaking the nearby coastline to exploring the coral-rich waters of Anghong Marine Park, adventure is always within reach. And when it's time to wind down, Lime Samui's elevated position offers the perfect front-row seat to the island's most mesmerising dusk displays.

Local Amenities

Nearest Airport	Koh Samui Airport (25 km)
Nearest Bar/Pub	Reggae Station (4 km)
Nearest Beach	Bang Makham Beach (4 km)
Nearest Golf	Golf Club Holidays (9 km)
Nearest Restaurant	Porlay (4 km)
Nearest Supermarket	Tesco Lotus (5 km)
Nearest Town	Nathon Town (5 km)



What we love

- The cinema room with a 3-metre screen and recliners is perfect for family movie nights or rainy afternoons.
- Dramatic sea views from nearly every room, including bedrooms with terrace access and Jacuzzi baths.
- The villa's spa, gym, pool and games room make it feel like your own private resort.

What you should know...

- The villa's hillside location means it isn't directly on the beach, but a driver and 7-seater SUV are included for easy access to the coast.
- Bedrooms are spread across multiple levels which may not be ideal for guests with reduced mobility.
- Due to the elevated location, younger children should be supervised on outdoor terraces and balconies.

Terms & Conditions

- **Security deposit:** Credit card details are required 2 weeks prior to departure for pre-authorisation.
- **Arrival time:** 15:00 - 20:00
- **Departure time:** 11:00
- **Energy costs included?:** Yes, included in the rental price.
- **Linen & towels included?:** Yes, included in the rental price.
- **Pets welcome?:** Not allowed.
- **Changeover day:** Flexible.
- **Smoking Allowed?:** Smoking & vaping are not permitted.
- **Minimum stay:** 3 - 7 nights, depending on the season. All other durations on request.
- **Heating costs included?:** Yes, included in the rental price.
- **Pool heating charge?:** Not available on this property.
- **Internet access?:** Wi-Fi internet access included.
- **Pool towels included?:** Yes, included in the rental price.