

Lime Samui V

Region: Koh Samui Sleeps: 14

Overview

Poised high on Koh Samui's north-western hills, Lime Samui V is a villa that knows how to impress. With a dramatic 180-degree panorama sweeping over the Ang Thong Marine Park, the Five Islands and the island's golden coastline, it's the perfect stage for the sunsets that this part of Samui is famed for. Spread across three levels, the villa blends striking contemporary design with playful touches, from its retro sunken lounge to a children's playground complete with treehouse, zip-line and trampoline.

The five ensuite bedrooms are light-filled sanctuaries with floor-to-ceiling glass, sleek bathrooms and, in some cases, indulgent freestanding tubs. At the heart of the villa, an 18-metre infinity pool stretches towards the horizon, bordered by a pristine white terrace dotted with daybeds and shaded salas for al fresco dining. Inside, a gourmet show-kitchen, open-plan living and dining spaces, and a private study flow seamlessly onto the pool deck.

With a fully equipped gym, spa suite and a team of staff including a chef and villa manager, Lime Samui V delivers a stay that's both indulgent and easy. Families, groups and sunset seekers will find it a dazzling island escape with a distinctly playful edge.



Facilities

Villa • Boat Trips • Watersports • Air-Con • Private Pool • Maid Service Included • Ideal for Teens • Cots (Cribs) • Beach Nearby • All Bedrooms En-Suite • Ground Floor Bed & Bath • <1hr to Airport • Parking Space • Wi-Fi/Internet • Seaview • BBQ • Coffee Machine • Outstanding Landscapes • Outdoor Pursuit & Activities • Hairdryer • TV • Lift • Laptop Friendly Workspace • Indoor Games • Gym/Fitness Room • Hot Tub • Dishwasher • Microwave • Safety Deposit Box • Home Cinema • Heating • Pre-Stocked Fridge Available • Spa Treatments Available • Babysitting Available • On-Site Concierge • Transfers Included • Breakfast Included • High Chair(s) • Fenced Grounds

Interior & Grounds

Ground Floor

- Bedroom 1: King-size bed, ensuite bathroom, covered terrace
- Bedroom 2: King-size bed, ensuite bathroom, covered terrace
- Bedroom 3: King-size bed, ensuite bathroom, covered terrace
- Life Fitness Gym with TRX ®

First Floor

- Open plan kitchen, living and dining room
- Foyer
- Bedroom 4: Children's bedroom with 2 queen-size beds, 2 single beds, ensuite bathroom, private terrace

Second Floor

- Bedroom 5: Master suite, king-size bed, living space, ensuite bathroom and private terrace

Exterior Grounds

- 18-meter infinity pool
- Pool terrace adorned with chic sun loungers and daybeds
- BBQ Area
- Children's play area with a treehouse, zip-line and trampoline
- Outdoor dining area for 14-guests
- Covered sala with built-in barbecue
- Al-fresco dining area

Additional Facilities

- Children's Treehouse
- Private Spa
- Office Workspace
- Kayaks
- Mountain Bikes
- 7-Seater SUV & Driver (on standby and discounted vs taxis)



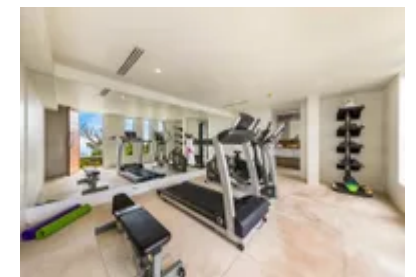
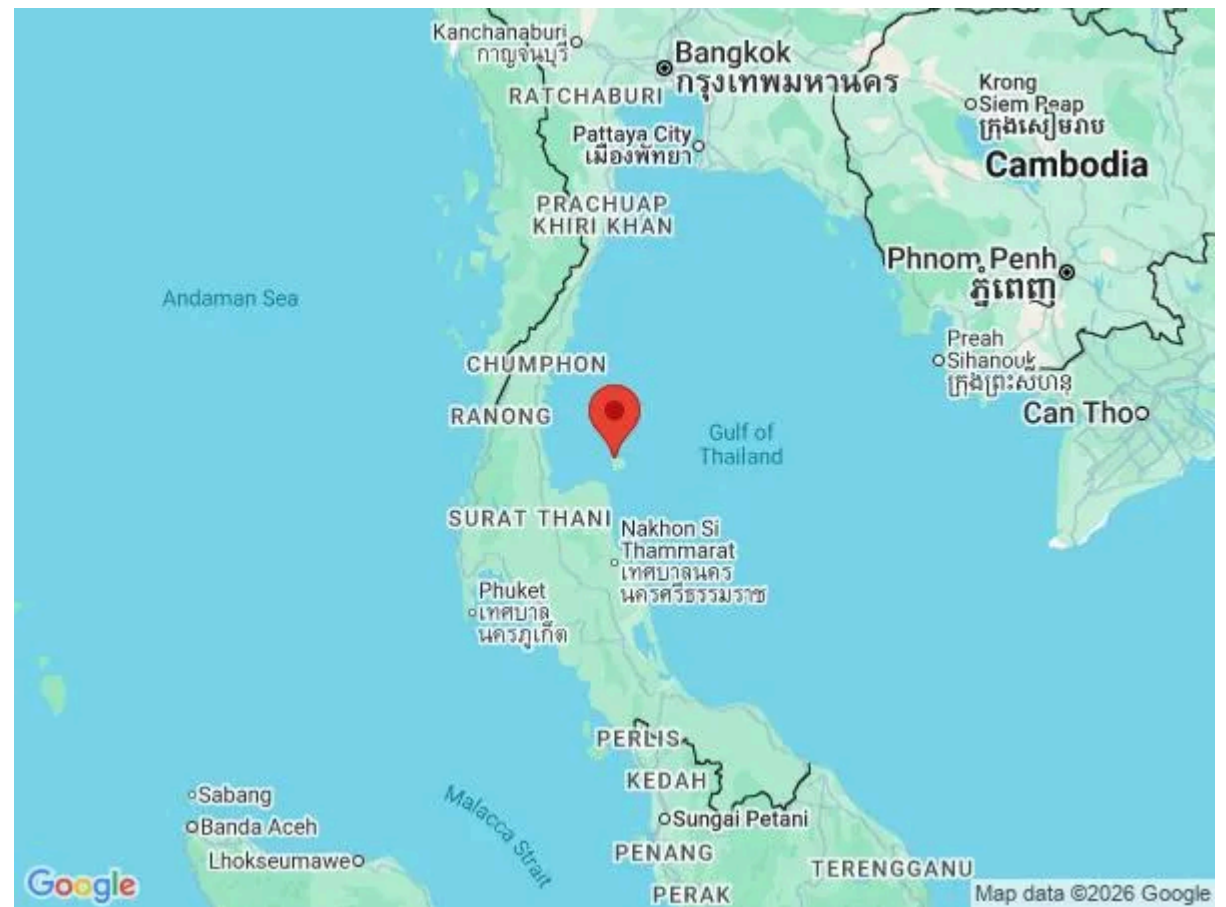
Location & Local Information

Set on the quiet hillside above Nathon, Lime Samui V balances peaceful seclusion with excellent access to the island's highlights. A ten-minute drive brings you into Nathon town, where bustling markets, shops and local restaurants line the streets. For more elevated experiences, you'll find stylish dining at the nearby Four Seasons Resort, or beach club vibes at Nikki Beach in Lipa Noi, both within 20 minutes.

This side of the island is loved for its fiery sunsets, authentic fishing villages and slower pace of life. Active travellers can venture out on mountain bikes or kayaks, chase jungle waterfalls, or explore neighbouring isles on a boat trip. Families will enjoy the calm sands of Coconut Beach, while the nightlife of Chaweng is within driving distance for those seeking a livelier scene. Wherever you go, returning to Lime Samui V's sweeping views is always the highlight.

Local Amenities

Nearest Airport	Koh Samui Airport (25 km)
Nearest Bar/Pub	Reggae Station (4 km)
Nearest Beach	Bang Makham Beach (4 km)
Nearest Golf	Golf Club Holidays (9 km)
Nearest Restaurant	Porlay (4 km)
Nearest Supermarket	Tesco Lotus (5 km)
Nearest Town	Nathon Town (5 km)



What we love

- A children's paradise with its own treehouse, zip-line and trampoline.
- Sweeping 180-degree sunsets over the Five Islands and Ang Thong Marine Park.
- Striking 18-metre infinity pool with stylish white terrace and shaded dining sala.
- Retro-style sunken lounge and contemporary design perfect for entertaining.

What you should know...

- The villa is hillside, not beachfront, but its panoramic views are unmatched.
- Multi-level layout may not be ideal for those with mobility concerns.
- Open terraces and elevated pool areas require supervision for younger children.

Terms & Conditions

- **Security deposit:** Credit card details are required 2 weeks prior to departure for pre-authorisation.
- **Arrival time:** 15:00 - 20:00
- **Departure time:** 11:00
- **Energy costs included?:** Yes, included in the rental price.
- **Linen & towels included?:** Yes, included in the rental price.
- **Pets welcome?:** Not allowed.
- **Changeover day:** Flexible.
- **Smoking Allowed?:** Smoking & vaping are not permitted.
- **Minimum stay:** 3 - 7 nights, depending on the season. All other durations on request.
- **Heating costs included?:** Yes, included in the rental price.
- **Pool heating charge?:** Not available on this property.
- **Internet access?:** Wi-Fi internet access included.
- **Pool towels included?:** Yes, included in the rental price.