

# Sea Mist House

Region: The South West Sleeps: 14

## Overview

Set within landscaped gardens just moments from Charlestown's historic harbour, Sea Mist House is a stylish and welcoming Cornish retreat made for large families or groups of friends. Across the main house and annexe, there are six beautifully designed bedrooms, including an emperor-size four-poster in the master suite, a zip-and-link super king with additional single, and a charming cabin room that sleeps three. The separate coach house annexe adds two further bedrooms and its own open-plan kitchen and living space, perfect for multi-generational getaways.

Inside, light floods through generous windows and French doors, revealing a series of inviting living areas, from a chic snug and sunlit drawing room with a wood-burning stove, to a games room equipped for hours of ping pong, pool or table football.

At the rear, tiered gardens flow around an alfresco dining terrace complete with barbecue, hanging egg chair and outdoor shower, plus wetsuit hooks for sandy beach returns. The lush front lawn is ideal for evening drinks or a quiet read under the trees. With Charlestown's tall ships, sea-view pubs and cafés just a short stroll away, Sea Mist House offers a characterful escape in one of Cornwall's most cinematic settings.

## Facilities

Historical Sites • Walking/Hiking Paths • Walk to Village • Ideal for Kids • Ideal for Parties • Golf Nearby • Chef/Cook Available • Ideal for Teens • Cots (Cribs) • Walk to Beach • Pets on Request • Has Discount • Special Offer • Beach Nearby • <1hr to Airport • Cottage • Walk to Restaurant • Parking Space • Wi-Fi/Internet • Bath mat • Decorated for Christmas • Washing Machine • Coffee Machine • Outstanding Landscapes • Hairdryer • Tourist Towns & Villages • Pool/Snooker • Table Tennis • Laptop Friendly Workspace • Games Room • Indoor Games • Tumble Dryer • Dishwasher • Microwave • Safety Deposit Box • Smart TV • Table Football • Working Fireplace/Woodburner • Heating • New Villas 2025 • Kid-friendly museum • Theme park • Spa Treatments Available • Water park • Catering Available • Playground nearby • Board games • Xbox/Playstation/Wii • Stair gates • Mattress protector • Plastic crockery • Food blender • High Chair(s) • Fenced Grounds



# Interior & Grounds

## Sea Mist House

### Main House

#### Ground Floor

- Cosy snug
- Spacious drawing room with oversized seating, wood burning stove and doors to both conservatory and rear garden
- Sunlit conservatory
- Cosy dining room
- Generously equipped kitchen with French doors to the garden
- Sprawling games room

#### First Floor

- Master bedroom 1: Emperor-size four poster bed, an ensuite bathroom, and a walk-in wardrobe
- Bedroom 2: Super king-size zip and link bed with an option for an additional full sized single
- Bedroom 3: King-size bed
- Bedroom 4: Cabin bed with a double base and single upper level, suitable for max. 2 adults and one child (*the single bed is suitable for children due to the size and low ceiling height*)
- Bathroom

#### Annexe (First-floor coach house with private entrance)

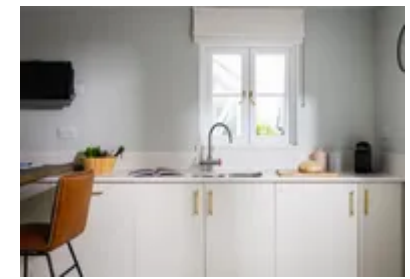
- Open plan living, kitchen and dining area
- Bedroom 5: Super king-size zip and link bed
- Bedroom 6: Luxurious king-size bed
- Bathroom with shower

## Outside Grounds

- Multi-level gardens
- Outdoor dining area
- Barbecue
- Swinging egg chair

#### Additional Facilities

- Table tennis, pool and table football
- Board games



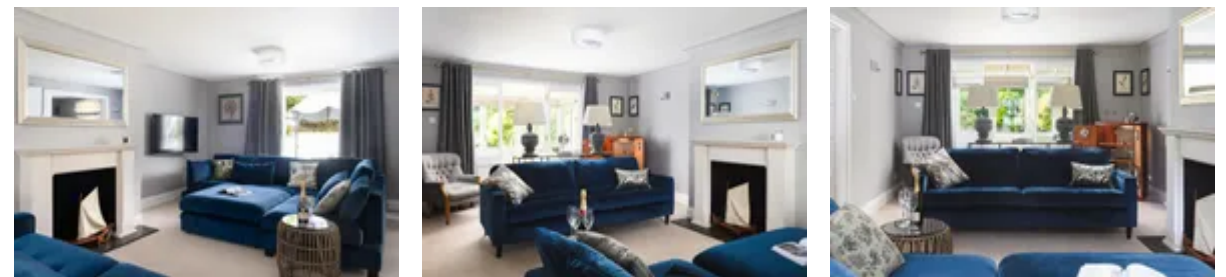
# Location & Local Information

Charlestown, a beautifully preserved Georgian port and UNESCO World Heritage Site, offers a unique blend of history and seaside charm. From the doorstep of Sea Mist House, it's a gentle walk to the 18th-century harbour where tall ships still dock and local fishing boats unload their morning catch. Cafés, beach bars and restaurants hug the quayside, offering everything from just-caught seafood and tapas to street food and wine with a sea view.

Charlestown Beach is perfect for rock-pooling, kayaking and picnics on pebbles. The South West Coast Path leads directly from the harbour, opening onto rugged trails, hidden coves and far-reaching views across St Austell Bay. For rainy days or inland exploration, both the Eden Project and the Lost Gardens of Heligan are a short drive away. With the Roseland Peninsula and Cornwall's iconic beaches within easy reach, Sea Mist is a base for both slow living and spirited adventure.

## Local Amenities

Nearest Airport	<b>Newquay (25km)</b>
Nearest Bar/Pub	<b>The Rashleigh Arms (110m)</b>
Nearest Beach	<b>Charlestown Beach (400m)</b>
Nearest Ferry Port	<b>Plymouth (52km)</b>
Nearest Golf	<b>Porthpean Golf Club (2.3km)</b>
Nearest Restaurant	<b>The Boathouse Charlestown (120m)</b>
Nearest Shop	<b>Brocante (80m)</b>
Nearest Supermarket	<b>Tesco (850m)</b>
Nearest Tennis	<b>St Austell Tennis Club (1.9km)</b>
Nearest Town/City	<b>St Austell (2.2km)</b>
Nearest Train Station	<b>St Austell (2.4km)</b>



Nearest Village

**Charlestown  
(0m)**

---

## What we love

- The multi-level landscaped garden with barbecue terrace, swinging egg chair and even an outdoor shower.
- Private, self-contained annexe, ideal for grandparents, teens or friends needing their own space.
- Just a short walk to Charlestown's UNESCO-listed harbour, cafés and the South West Coast Path!

## What you should know...

- The annexe is accessed via external stairs and has its own entrance - it may not suit guests with limited mobility.
- The cabin-style bed in bedroom 4 of the main house can sleep 3 guests, however the upper level is best suited to children due to the bed size and low ceiling height.

# Terms & Conditions

- **Security deposit:** £500 charged to client's credit card by Oliver's Travels as a pre-authorisation at least 2 weeks prior to arrival and refunded two weeks after departure, subject to full inspection.
- **Arrival time:** Between 4 p.m. - 10 p.m.
- **Departure time:** 10 a.m.
- **Energy costs included?:** Yes, included in the rental price.
- **Linen & towels included?:** Yes, included in the rental price.
- **Pets welcome?:** 1 well-behaved dog is welcome on request only and with prior agreement with the owner at a cost of £50
- **Other Ts and Cs:** The cabin-style bed in bedroom 4 of the main house can sleep 3 guests, however the upper level is best suited to children due to the bed size and low ceiling height.
- **Changeover day:** Monday, Friday, Saturday or Sunday. Dependent on Season, please enquire for more information
- **End of stay cleaning:** Standard changeover clean included in the price. Guests are required to leave the accommodation clean, tidy and in the same condition as on their arrival. Any extra cleaning, laundry, maintenance and/or rubbish disposal required will be charged against the security deposit.
- **Smoking Allowed?:** Smoking is not permitted.
- **Minimum stay:** 2 nights between October and mid-May, and 7 nights during school holidays and throughout the rest of the year.
- **Heating costs included?:** Yes, included in the rental price.
- **Internet access?:** Included in the rental price.