

# Alma Lusa

Region: Lisbon Sleeps: 3

---

## Overview

Tucked away on a quiet street in the heart of Lapa, Alma Lusa is a stylish and compact studio that feels instantly inviting. Bright and beautifully considered, the interiors combine natural light, clean lines and soft textures to create a calming urban escape. The double bed is dressed in crisp white linens and earthy-toned cushions, while the open-plan layout includes a neat sitting area with a modern sofa, perfect for curling up after a day exploring Lisbon.

A fully equipped kitchen with sleek cabinetry allows for easy home cooking, and the tiled bathroom features a walk-in rainfall shower for an energising start or soothing end to the day. Though modest in size, guests benefit from access to the building's shared lounge spaces, including a work zone, games area and communal kitchen.

Step outside and Lisbon reveals itself in layers, quiet courtyards, buzzing bars, elegant façades and leafy parks all within walking distance. From morning pastries at a local pastelaria to an evening stroll through Santos' riverside streets, Alma Lusa places you right where Lisbon's charm lives.



## Facilities

Air-Con • Wine Tasting • Historical Sites • Townhouse/Apartment • Modern • <1hr to Airport • Walk to Restaurant • Wi-Fi/Internet • Coffee Machine • Hairdryer • Dishwasher • Microwave • Smart TV

# Interior & Grounds

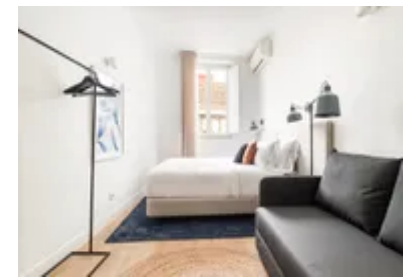
## Accommodation

### Interior

- Living area with single sofa bed
- Kitchenette
- Dining area
- Bedroom 1: Double bed
- Bathroom with shower

### Additional Facilities

- Building with elevator
- Air conditioning for an ideal climate at any time of the year
- Smart TV and free Wi-Fi, ensuring you are always connected
- Hairdryer and hangers
- Free access to the lounge with work and leisure areas



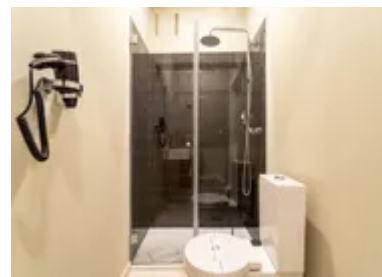
# Location & Local Information

Set on Rua das Trinas in graceful Lapa, Alma Lusa offers a base where history and creativity meet. Surrounded by 18th-century mansions, peaceful squares and the gentle hum of local life, this part of Lisbon exudes quiet sophistication. Yet just minutes away lies the dynamic energy of Santos and Cais do Sodré, neighbourhoods filled with galleries, nightlife, cafés and artisan stores.

Stroll to Jardim da Estrela, a romantic public garden framed by jacaranda trees, or discover the quirky charm of the Puppet Museum a few streets away. The area also offers a wide choice of public transport options, including trams, trains and buses, putting the rest of Lisbon within easy reach. Whether you're after culture, cuisine or calm, Alma Lusa sits at the crossroads of it all.

## Local Amenities

Nearest Airport	<b>Lisbon Airport</b> (9.5 km)
Nearest Bar/Pub	<b>Cascavel</b> (100 m)
Nearest Beach	<b>Algés Beach</b> (8 km)
Nearest Restaurant	<b>Yallah Restaurant</b> (110 m)
Nearest Supermarket	<b>Pingo Doce</b> (400 m)
Nearest Train Station	<b>Santos</b> (500 m)



## What we love

- Calming, design-led studio in one of Lisbon's most charming quarters.
- Ideal for couples or solo travellers seeking a walkable, well-connected stay.
- Guests can make the most of Lisbon with a selection of memorable experiences, including a Lisbon Walking Tour, a Private Boat Cruise along the Tagus, a Lisbon Petiscos Lovers & Wine Crawl Tour, and a day trip to Sintra.
- Free access to the shared lounge adds extra convenience, with dedicated work and leisure spaces alongside a fully equipped kitchen and laundry area - ideal for longer stays or flexible travel plans.

## What you should know...

- At 21 m<sup>2</sup>, the space is compact and better suited to one or two guests.
- There's no private balcony or terrace, though shared lounge areas are available.
- The sofa is best used as additional seating rather than a full extra bed.

# Terms & Conditions

- **Security deposit:** €200 charged to client's credit card before arrival and refunded two weeks after departure, subject to full inspection.
- **Arrival time:** 3 pm. Late check-in possible at an extra cost of €30 per booking, please enquire.
- **Departure time:** 11 am. Late check-out possible at an extra cost of €30 per booking, please enquire.
- **Energy costs included?:** Yes, included in the rental price.
- **Linen & towels included?:** Yes, included in the rental price.
- **Pets welcome?:** On request only and with prior agreement with the owner. If accepted, a pet supplement of €40 per booking will apply (paid locally).
- **Changeover day:** Flexible.
- **End of stay cleaning:** Not included in the rental price, extra €40 to be paid with the balance due.
- **Smoking Allowed?:** Smoking & Vaping are not permitted.
- **Minimum stay:** 2 nights. All other durations on request.
- **Heating costs included?:** Not available on this property.
- **Tax:** Lisbon Tourist Tax of €4.00 a night for guests over 13. This is to be paid locally.
- **Internet access?:** Wi-Fi internet access included.