

Alma Bica

Region: Lisbon Sleeps: 2

Overview

Neatly tucked into a characterful building in Lisbon's elegant Lapa district, Alma Bica is a stylish studio where modern simplicity meets city charm. Step inside to find a calming palette of soft neutrals, sleek fittings and natural light streaming through tall windows that open onto a classic wrought-iron balcony. Every corner of this studio is thoughtfully curated, from the inviting double bed and compact dining space to the well-placed artwork and warm-toned wood flooring.

The kitchenette is cleverly integrated with all the essentials for light cooking, while the bathroom features polished stone finishes and a walk-in shower for a hotel-style refresh. Perfect for two, this studio also includes access to shared amenities within the building: a calm lounge for work or reading, a leisure space with billiards, and a communal kitchen and laundry room for added convenience.

Outside, the winding streets of Lapa give way to Santos and Cais do Sodré, offering everything from fine dining to cultural discoveries. Whether you're here for a romantic city break or a design-conscious retreat, Alma Bica brings the best of Lisbon to your doorstep.



Facilities

Air-Con • Wine Tasting • Townhouse/Apartment • <1hr to Airport • Walk to Restaurant • Wi-Fi/Internet • Coffee Machine • Hairdryer • Dishwasher • Microwave • Smart TV

Interior & Grounds

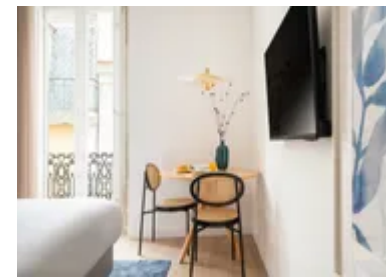
Accommodation

Interior

- Living area with single sofa bed
- Kitchenette
- Dining area
- Bedroom 1: Double bed
- Bathroom with shower

Additional Facilities

- Building with elevator
- Air conditioning for an ideal climate at any time of the year
- Smart TV and free Wi-Fi, ensuring you are always connected
- Hairdryer and hangers
- Free access to the lounge with work and leisure areas



Location & Local Information

Set along Rua das Trinas in refined Lapa, Alma Bica places you within a few minutes' walk of both tranquillity and buzz. Lapa's leafy avenues and historic facades offer a sense of calm and heritage, while nearby Santos and Cais do Sodré pulse with creativity, culture and nightlife. This is a neighbourhood where cobbled streets lead to unexpected discoveries, boutique galleries, quiet gardens, and cafés humming with locals.

The grand Jardim da Estrela is a short stroll away, offering wide lawns, shade-filled paths and a romantic bandstand. A morning pastry from Aloma or Santo Amaro is almost a rite of passage, and the famous Rua Cor-de-Rosa delivers Lisbon's iconic nightlife scene just moments from your door. Well-served by tram, bus and train, Alma Bica makes a perfect base for exploring every corner of the city.

Local Amenities

Nearest Airport	Lisbon Airport (9.5 km)
Nearest Bar/Pub	Cascavel (100 m)
Nearest Beach	Algés Beach (8 km)
Nearest Restaurant	Yallah Restaurant (110 m)
Nearest Supermarket	Pingo Doce (400 m)
Nearest Train Station	Santos (500 m)



What we love

- Well-designed interiors with everything needed for a stylish Lisbon city break.
- A calm base in Lapa, just minutes from the art, bars and riverfront cafés of Santos.
- Guests can make the most of Lisbon with a selection of memorable experiences, including a Lisbon Walking Tour, a Private Boat Cruise along the Tagus, a Lisbon Petiscos Lovers & Wine Crawl Tour, and a day trip to Sintra.
- Free access to the shared lounge adds extra convenience, with dedicated work and leisure spaces alongside a fully equipped kitchen and laundry area - ideal for longer stays or flexible travel plans.

What you should know...

- This is a small studio space best suited to couples or solo travellers.
- The single sofa bed may be more comfortable for a child than an adult.
- While there's no private outdoor space, a French balcony brings in plenty of light.

Terms & Conditions

- **Security deposit:** €200 charged to client's credit card before arrival and refunded two weeks after departure, subject to full inspection.
- **Arrival time:** 3 pm. Late check-in possible at an extra cost of €30 per booking, please enquire.
- **Departure time:** 11 am. Late check-out possible at an extra cost of €30 per booking, please enquire.
- **Energy costs included?:** Yes, included in the rental price.
- **Linen & towels included?:** Yes, included in the rental price.
- **Pets welcome?:** On request only and with prior agreement with the owner. If accepted, a pet supplement of €40 per booking will apply (paid locally).
- **Changeover day:** Flexible.
- **End of stay cleaning:** Not included in the rental price, extra €40 to be paid with the balance due.
- **Smoking Allowed?:** Smoking & Vaping are not permitted.
- **Minimum stay:** 2 nights. All other durations on request.
- **Heating costs included?:** Not available on this property.
- **Tax:** Lisbon Tourist Tax of €4.00 a night for guests over 13. This is to be paid locally.
- **Internet access?:** Wi-Fi internet access included.