

# Alma Azul

Region: Lisbon Sleeps: 3

---

## Overview

With its wide windows, soft neutral palette and open layout, Alma Azul feels like a breath of fresh air in the heart of Lisbon's charming Lapa district. This 31 m<sup>2</sup> studio has a sense of spaciousness that's rare for a city escape, combining thoughtful design with homely comfort. A plush double bed is framed by soft lighting and paired with a single sofa bed, creating a calm retreat that's perfect for couples, solo travellers or a trio of friends.

At one end, the fully equipped kitchen blends seamlessly into the living and dining space, while floor-to-ceiling doors open out to a private terrace overlooking the rooftops. It's the ideal spot for morning coffee or a quiet evening aperitif. The bathroom is modern and generous in size, finished in clean, natural stone tones with a large walk-in shower.

Guests also enjoy full access to communal areas in the building, including workspaces, a leisure lounge with billiards and a shared kitchen and laundry point. Whether you're strolling to nearby Santos or catching the sunset in Jardim da Estrela, Alma Azul invites you to slow down and savour Lisbon like a local.



## Facilities

Air-Con • Wine Tasting • Historical Sites • Townhouse/Apartment • Walk to Restaurant • Wi-Fi/Internet • Coffee Machine • Hairdryer • Laptop Friendly Workspace • Dishwasher • Microwave • Smart TV

# Interior & Grounds

## Accommodation

### Interior

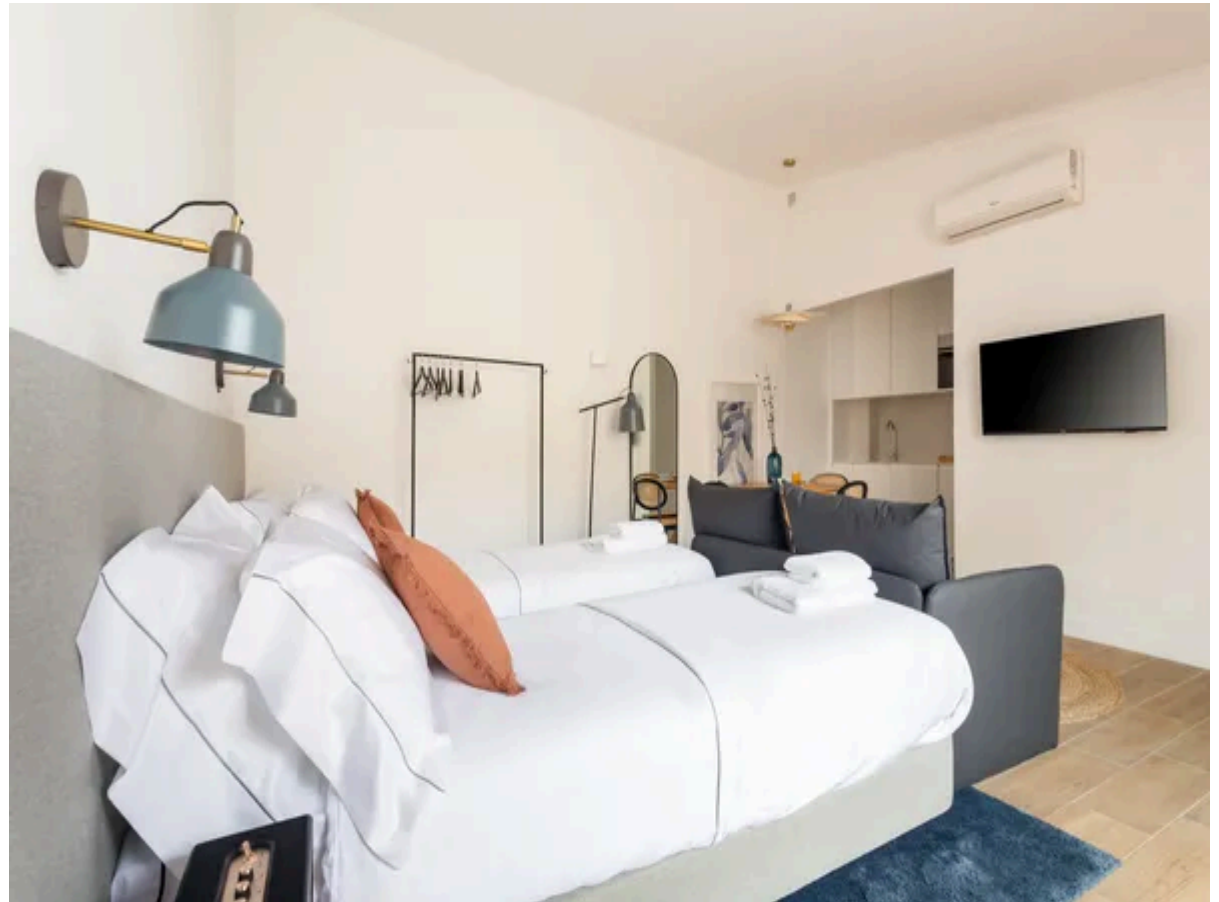
- Living area with single sofa bed
- Kitchenette
- Dining area
- Bedroom 1: 2 x single beds
- Bathroom with shower

### Exterior

- Balcony with seating

### Additional Facilities

- Building with elevator
- Air conditioning for an ideal climate at any time of the year
- Smart TV and free Wi-Fi, ensuring you are always connected
- Hairdryer and hangers
- Free access to the lounge with work and leisure areas



# Location & Local Information

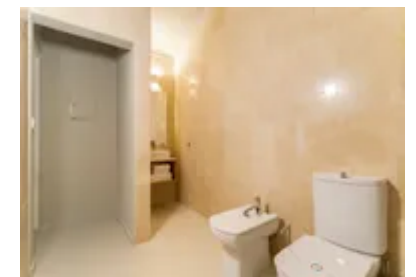
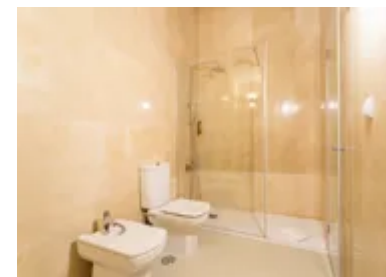
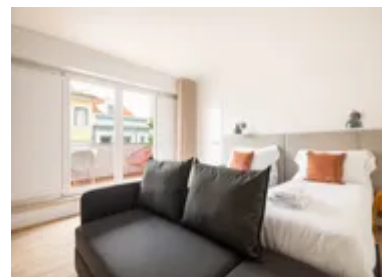
Located along Rua das Trinas in the graceful Lapa district, Alma Azul places you in one of Lisbon's most authentic and character-rich neighbourhoods. Known for its elegant façades and quiet ambience, Lapa offers a village-like feel just moments from the city's vibrant heart.

A short walk brings you to the creative quarter of Santos, with its riverside cafés, art galleries and design shops. Cais do Sodré is equally close, offering nightlife, music venues and the iconic Rua Cor-de-Rosa. For a slower pace, Jardim da Estrela offers shaded paths and quiet corners beneath swaying palm trees.

Nearby, the Puppet Museum adds a touch of whimsy, while pastelarias such as Aloma and Santo Amaro serve Lisbon's most iconic sweet treats. Excellent transport links, including trams, buses and trains, ensure you can explore further afield with ease, from Belém's historic sites to the winding lanes of Alfama.

## Local Amenities

Nearest Airport	<b>Lisbon Airport</b> (9.5 km)
Nearest Bar/Pub	<b>Cascavel</b> (100 m)
Nearest Beach	<b>Algés Beach</b> (8 km)
Nearest Restaurant	<b>Yallah Restaurant</b> (110 m)
Nearest Supermarket	<b>Pingo Doce</b> (400 m)
Nearest Train Station	<b>Santos</b> (500 m)



## What we love

- A spacious layout with a rare bonus: a private outdoor terrace!
- Guests can make the most of Lisbon with a selection of memorable experiences, including a Lisbon Walking Tour, a Private Boat Cruise along the Tagus, a Lisbon Petiscos Lovers & Wine Crawl Tour, and a day trip to Sintra.
- Free access to the shared lounge adds extra convenience, with dedicated work and leisure spaces alongside a fully equipped kitchen and laundry area - ideal for longer stays or flexible travel plans.
- A peaceful setting in elegant Lapa, yet walkable to Santos and Cais do Sodré.

## What you should know...

- The sofa bed is more suitable for a child or younger guest.
- Shared facilities such as the lounge and leisure spaces are communal.

# Terms & Conditions

- **Security deposit:** €200 charged to client's credit card before arrival and refunded two weeks after departure, subject to full inspection.
- **Arrival time:** 3 pm. Late check-in possible at an extra cost of €30 per booking, please enquire.
- **Departure time:** 11 am. Late check-out possible at an extra cost of €30 per booking, please enquire.
- **Energy costs included?:** Yes, included in the rental price.
- **Linen & towels included?:** Yes, included in the rental price.
- **Pets welcome?:** On request only and with prior agreement with the owner. If accepted, a pet supplement of €40 per booking will apply (paid locally).
- **Changeover day:** Flexible.
- **End of stay cleaning:** Not included in the rental price, extra €40 to be paid with the balance due.
- **Smoking Allowed?:** Smoking & Vaping are not permitted.
- **Minimum stay:** 2 nights. All other durations on request.
- **Heating costs included?:** Not available on this property.
- **Tax:** Lisbon Tourist Tax of €4.00 a night for guests over 13. This is to be paid locally.
- **Internet access?:** Wi-Fi internet access included.