

Alma Branca

Region: Lisbon Sleeps: 3

Overview

Bathed in natural light and softened by pale, earthy tones, Alma Branca offers an inviting space to slow down and feel at home in Lisbon's elegant Lapa neighbourhood. This intimate studio has been cleverly designed for both comfort and function, with clean-lined furnishings, oak-look flooring, and soft textiles that bring warmth to the minimalist interiors. A plush double bed is paired with a smart single sofa bed, making this a great option for couples, solo travellers, or a small trio.

The compact kitchen, fully equipped with everything from a dishwasher to a juicer, opens onto a neat dining area beneath a modern pendant light. A sleek bathroom with contemporary finishes and a walk-in shower completes the space. While compact, the studio includes exclusive access to generous shared spaces in the building, from quiet work lounges to a social games room with billiards.

Step outside and you'll find yourself wandering cobbled streets lined with tiled townhouses and flowering balconies. Whether you're heading to the vibrant nightlife of Cais do Sodré or the artistic corners of Santos, Alma Branca is perfectly positioned to let you explore Lisbon with ease.



Facilities

Air-Con • Wine Tasting • Historical Sites • Townhouse/Apartment • <1hr to Airport • Walk to Restaurant • Wi-Fi/Internet • Coffee Machine • Hairdryer • Dishwasher • Microwave • Smart TV

Interior & Grounds

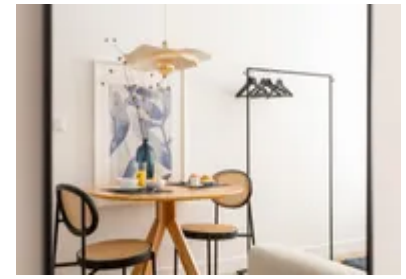
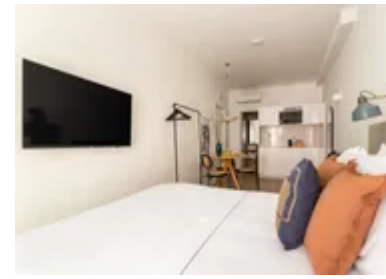
Accommodation

Interior

- Kitchenette
- Dining area
- Bedroom 1: Double bed
- Bathroom with shower

Additional Facilities

- Building with elevator
- Air conditioning for an ideal climate at any time of the year
- Smart TV and free Wi-Fi, ensuring you are always connected
- Hairdryer and hangers
- Free access to the lounge with work and leisure areas



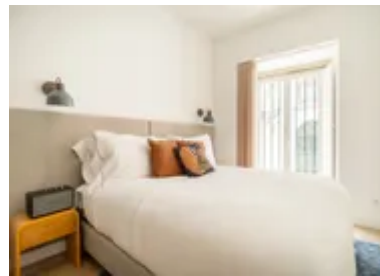
Location & Local Information

Nestled along Rua das Trinas, Alma Branca places you in the heart of Lapa, a neighbourhood where grand old mansions and leafy boulevards hint at Lisbon's aristocratic past. This peaceful corner of the city offers a calming contrast to the lively cultural energy just minutes away in Santos and Cais do Sodré.

You'll find traditional pastelarias alongside modern design cafés, with green spaces like Jardim da Estrela just moments from your door. For something more local, visit the Puppet Museum, tucked into an old convent just four minutes away, or stroll toward the waterfront to catch a ferry or tram. Excellent public transport options put the entire city at your feet, whether you're heading to Alfama's fado houses or the boutiques of Chiado.

Local Amenities

| | |
|-----------------------|-------------------------------------|
| Nearest Airport | Lisbon Airport (9.5 km) |
| Nearest Bar/Pub | Cascavel (100 m) |
| Nearest Beach | Algés Beach (8 km) |
| Nearest Restaurant | Yallah Restaurant (110 m) |
| Nearest Supermarket | Pingo Doce (400 m) |
| Nearest Train Station | Santos (500 m) |



What we love

- A bright, compact studio in Lapa with sleek interiors and space for up to three guests.
- Guests can make the most of Lisbon with a selection of memorable experiences, including a Lisbon Walking Tour, a Private Boat Cruise along the Tagus, a Lisbon Petiscos Lovers & Wine Crawl Tour, and a day trip to Sintra.
- Free access to the shared lounge adds extra convenience, with dedicated work and leisure spaces alongside a fully equipped kitchen and laundry area - ideal for longer stays or flexible travel plans.
- Walkable to Jardim da Estrela, Cais do Sodré and some of the city's best restaurants.

What you should know...

- At 22 m², space is best suited for solo travellers, couples or small families.
- There is no private outdoor space, but guests have access to communal lounges.
- The single sofa bed may be better suited to a child or younger guest.

Terms & Conditions

- **Security deposit:** €200 charged to client's credit card before arrival and refunded two weeks after departure, subject to full inspection.
- **Arrival time:** 3 pm. Late check-in possible at an extra cost of €30 per booking, please enquire.
- **Departure time:** 11 am. Late check-out possible at an extra cost of €30 per booking, please enquire.
- **Energy costs included?:** Yes, included in the rental price.
- **Linen & towels included?:** Yes, included in the rental price.
- **Pets welcome?:** On request only and with prior agreement with the owner. If accepted, a pet supplement of €40 per booking will apply (paid locally).
- **Changeover day:** Flexible.
- **End of stay cleaning:** Not included in the rental price, extra €40 to be paid with the balance due.
- **Smoking Allowed?:** Smoking & Vaping are not permitted.
- **Minimum stay:** 2 nights. All other durations on request.
- **Heating costs included?:** Not available on this property.
- **Tax:** Lisbon Tourist Tax of €4.00 a night for guests over 13. This is to be paid locally.
- **Internet access?:** Wi-Fi internet access included.