

Alma Fado

Region: Lisbon Sleeps: 2

Overview

Set high in Lisbon's historic Lapa district, Alma Fado is a sunlit studio where clean lines and thoughtful design create a peaceful retreat in the heart of the city. As you step inside, soft neutral tones and natural textures meet contemporary touches, from the pale wood floors to the plush double bed and cosy dining nook. Full-height windows let in generous light, while the compact kitchen, equipped with everything from an induction hob to a Nespresso machine, makes self-catering feel effortless.

A sleek, modern bathroom with glossy black tiles and a rainfall shower completes the space, offering a touch of boutique comfort. Though intimate, every inch of this studio has been used with purpose, and guests also have access to shared areas in the building: a lounge with workspaces, a games room with billiards, and even a utility kitchen and laundry zone.

Outside, the cobbled lanes of Lapa wind gently downhill toward Santos and Cais do Sodré. Here, the spirit of old Lisbon mingles with its buzzing creative energy, from tiled façades and bell towers to late-night bars and pastelarias brimming with warm pastéis de nata.



Facilities

Air-Con • Wine Tasting • Historical Sites • Townhouse/Apartment • <1hr to Airport • Walk to Restaurant • Wi-Fi/Internet • Coffee Machine • Hairdryer • Dishwasher • Microwave • Smart TV

Interior & Grounds

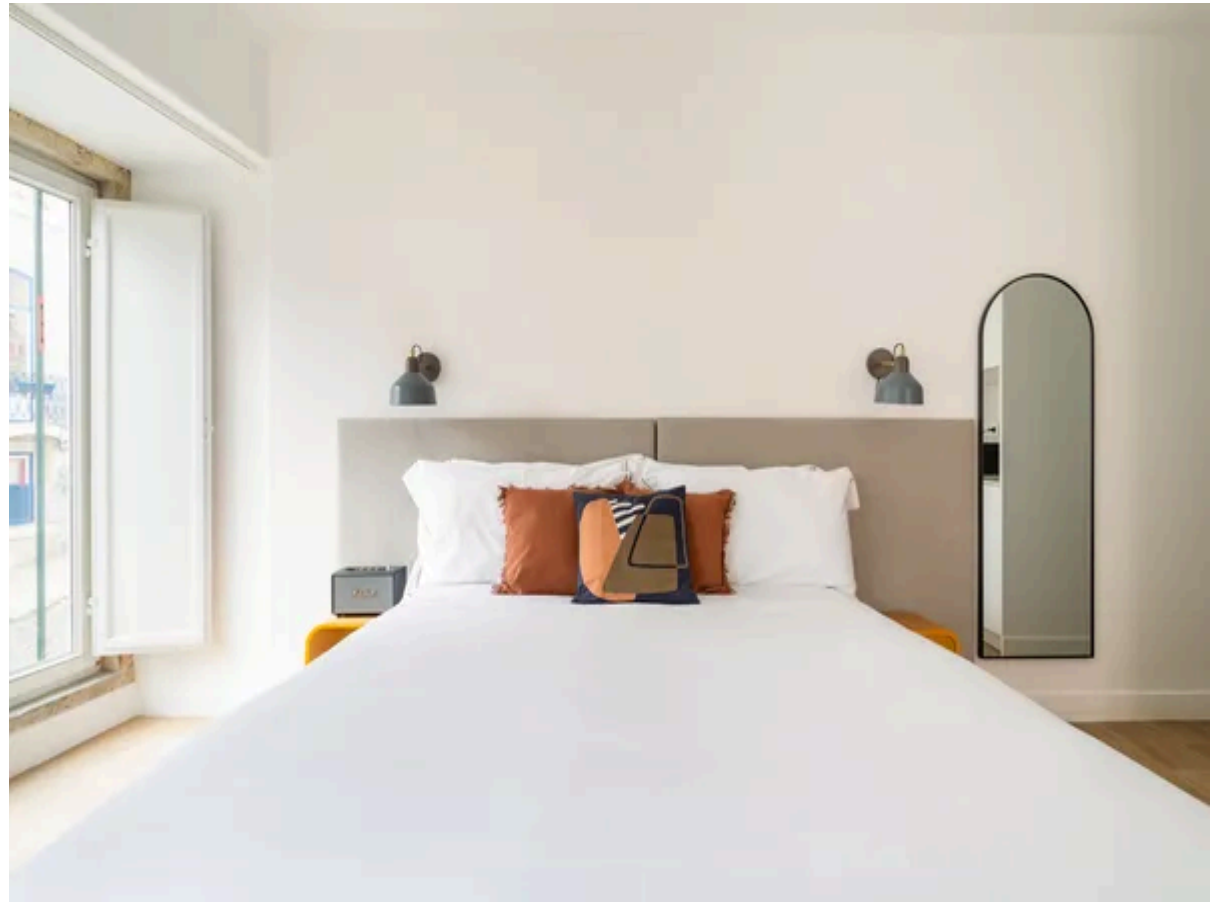
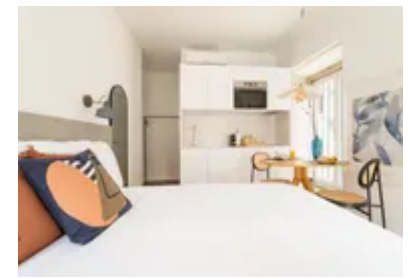
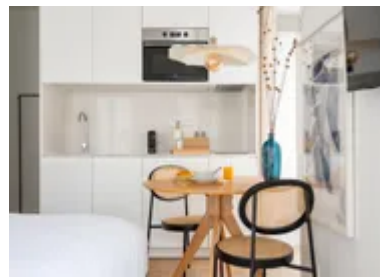
Accommodation

Interior

- Kitchenette
- Dining area
- Bedroom 1: Double bed
- Bathroom with shower

Additional Facilities

- Building with elevator
- Air conditioning for an ideal climate at any time of the year
- Smart TV and free Wi-Fi, ensuring you are always connected
- Hairdryer and hangers
- Free access to the lounge with work and leisure areas



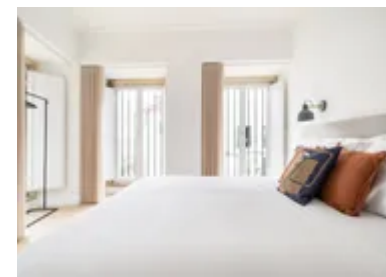
Location & Local Information

Tucked into the residential calm of Rua das Trinas, Alma Fado is perfectly placed for those seeking to explore Lisbon at a gentle pace. In just five minutes, you can reach the leafy serenity of Jardim da Estrela or the riverside hub of Santos-o-Velho. Historic tram lines and nearby train and bus stops offer easy access across the city, while the famous pink street of Cais do Sodré, known for its nightlife and creative culture, is just a short stroll away.

The area is steeped in old-world charm, with narrow streets leading to viewpoints, hidden churches, and traditional taverns. Yet it's also a neighbourhood of new ideas, home to galleries, artisan cafés, and design studios. From the grand façades of embassies in Lapa to the vibrant arts scene of Santos, this part of Lisbon blends tradition and modernity in a way that feels distinctly local.

Local Amenities

Nearest Airport	Lisbon Airport (9.5 km)
Nearest Bar/Pub	Cascavel (100 m)
Nearest Beach	Algés Beach (8 km)
Nearest Restaurant	Yallah Restaurant (110 m)
Nearest Supermarket	Pingo Doce (400 m)
Nearest Train Station	Santos (500 m)



What we love

- A smart, design-forward space in one of Lisbon's most atmospheric quarters.
- Walking distance to Cais do Sodré, Santos and Jardim da Estrela.
- Guests can make the most of Lisbon with a selection of memorable experiences, including a Lisbon Walking Tour, a Private Boat Cruise along the Tagus, a Lisbon Petiscos Lovers & Wine Crawl Tour, and a day trip to Sintra.
- Free access to the shared lounge adds extra convenience, with dedicated work and leisure spaces alongside a fully equipped kitchen and laundry area - ideal for longer stays or flexible travel plans.

What you should know...

- This is a compact studio (22 m²), so best suited to solo travellers or couples.
- There is no private outdoor space, though Jardim da Estrela is nearby.
- The shared lounge and leisure areas are communal and may host other guests.

Terms & Conditions

- **Security deposit:** €200 charged to client's credit card before arrival and refunded two weeks after departure, subject to full inspection.
- **Arrival time:** 3 pm. Late check-in possible at an extra cost of €30 per booking, please enquire.
- **Departure time:** 11 am. Late check-out possible at an extra cost of €30 per booking, please enquire.
- **Energy costs included?:** Yes, included in the rental price.
- **Linen & towels included?:** Yes, included in the rental price.
- **Pets welcome?:** On request only and with prior agreement with the owner. If accepted, a pet supplement of €40 per booking will apply (paid locally).
- **Changeover day:** Flexible.
- **End of stay cleaning:** Not included in the rental price, extra €40 to be paid with the balance due.
- **Smoking Allowed?:** Smoking & Vaping are not permitted.
- **Minimum stay:** 2 nights. All other durations on request.
- **Heating costs included?:** Not available on this property.
- **Tax:** Lisbon Tourist Tax of €4.00 a night for guests over 13. This is to be paid locally.
- **Internet access?:** Wi-Fi internet access included.