

Villa Adithi

Region: United Arab Emirates **Sleeps:** 12

Overview

Just off a peaceful crescent of Palm Jumeirah, Villa Adithi opens directly onto its own private beach, where the calm sea laps at golden sand and the Dubai skyline rises in the distance. Step inside and you're welcomed by sweeping arched windows, crisp white interiors, and an effortless sense of space. The living room is made for long, lazy mornings or sociable evenings, wrapped in natural light and soft furnishings that invite you to stay a while.

Wander through to the open-plan dining area, where rattan pendant lights hang above a sleek wooden table, or head into the kitchen, beautifully appointed and fully equipped for every culinary need. Upstairs, six elegant bedrooms offer a sense of calm and quiet, including a serene master suite with a private terrace and views across the water.

Outside, the villa's garden blends sun-kissed terrace, lawn and a generous pool, all just steps from your own private strip of beach. From morning swims to sunset lounging, this is a setting that changes with the light and always feels just right. Within minutes you can reach Atlantis, West Palm Beach or Nakheel Mall, but here, time seems to move just a little slower.

Facilities

Wi-Fi/Internet • Coffee Machine • City Homes & Apartments • Hairdryer • Beachfront • Washing Machine • TV • Walk to Beach • Ground Floor Bed & Bath • Air-Con • Private Pool • Beach Nearby • Laptop Friendly Workspace • Ideal for Babies & Toddlers • Ideal for Kids • Ideal for Teens • Hot Tub • <1hr to Airport • Dishwasher • Microwave • Safety Deposit Box • All Bedrooms En-Suite • Parking Space • Outdoor Pursuit & Activities • Tourist Towns & Villages



Interior & Grounds

Interior

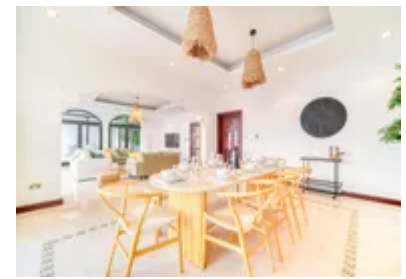
- Living room plush sofas
- Fully equipped kitchen with oven, stove, microwave, kettle, toaster, and a Nespresso
- Dining area
- Bedroom 1: King-size bed, ensuite bathroom
- Bedroom 2: Queen-size bed, ensuite bathroom
- Bedroom 3: 2 Double beds, ensuite bathroom
- Bedroom 4: King-size bed, ensuite bathroom
- Bedroom 5: Queen-size bed, ensuite bathroom
- Bedroom 6: King-size bed, ensuite bathroom

Exterior Grounds

- Private balcony
- Private beach
- Private swimming pool
- Hot tub

Additional Facilities

- Parking in integrated garage



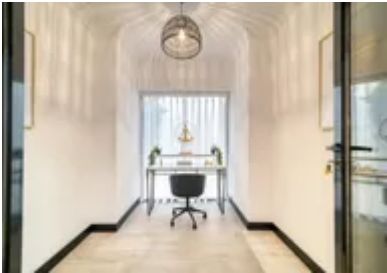
Location & Local Information

Set in the exclusive Frond D enclave on Palm Jumeirah, Villa Adithi enjoys a sought-after position with both privacy and immediate access to Dubai's coastal attractions. The soft, private beach lies just beyond your pool terrace, and within a short drive, you'll find world-class experiences at Atlantis, The Palm, including the thrills of Aquaventure Waterpark and fine dining at Nobu or Seafire Steakhouse.

Stroll along the Palm's scenic Boardwalk, enjoy a sundowner at West Palm Beach or browse the boutique stores and eateries of nearby Nakheel Mall. Whether you're looking for watersports, world-renowned restaurants, or family attractions, everything is within reach. Despite being so well connected, the neighbourhood feels peaceful, secure and distinctly residential, a quiet retreat from the energy of the city.

Local Amenities

Nearest Airport	Dubai International Airport (36 km)
Nearest Bar/Pub	Dukes Bar (2 km)
Nearest Beach	Palm Jumeirah Beach (100 m)
Nearest Restaurant	L'ETO (3 km)
Nearest Supermarket	Waitrose & Partners (3 km)
Nearest Train Station	Nakheel Mall Monorail Station (2 km)
Sightseeing	Burj Khalifa (23 km)



What we love

- Private beach access and a pool with uninterrupted views of Dubai Marina's skyline!
- Within moments of Atlantis, The Palm and iconic dining destinations like Nobu and Seafire.
- Beautiful natural light, minimalist décor and arched windows give the villa a serene, Mediterranean feel.

What you should know...

- While this is a beachfront property, the beach is tidal and swimming conditions may vary throughout the day.
- The maid's room is available for use but may have a more functional layout than the main guest rooms.

Terms & Conditions

- **Security deposit:** AED 6,000 charged to client's credit card as a pre-authorisation two weeks before arrival and refunded two weeks after departure, subject to full inspection.
- **Arrival time:** 3 pm
- **Departure time:** 11 am
- **Energy costs included?:** Yes, included in the rental price.
- **Linen & towels included?:** Yes, included in the rental price.
- **Pets welcome?:** Not allowed.
- **Changeover day:** Flexible.
- **End of stay cleaning available?:** Not included in the rental price, extra AED 2,500 to be paid with the balance due.
- **Smoking Allowed?:** Smoking & Vaping are not permitted.
- **Minimum stay:** 2 nights. All other durations on request.
- **Heating costs included?:** Not available on this property.
- **Tax:** There is a city tax due to be paid locally which is not included in the rental rate. The amount will be confirmed by your onsite representative when you arrive.
- **Internet access?:** Wi-Fi internet access included.
- **Stag & Hen Do Allowed? :** Weddings, stag/hen parties and any special events are not allowed.