

Villa Epica

Region: Portugal Sleeps: 8

Overview

Set in the heart of the Douro Valley, Villa Epica is a sleek, single-storey retreat designed for modern comfort and effortless outdoor living. Surrounded by neat rows of citrus trees and rolling hills, this contemporary villa offers a peaceful base for exploring Portugal's most celebrated wine region.

Ideal for families or couples travelling together, the villa features four double bedrooms, each with its en-suite bathroom for added privacy. Inside, clean architectural lines and a minimalist aesthetic bring a calm, cohesive feel to the space. There are two fully equipped kitchens and two inviting lounge-diner areas, perfect for sharing meals, conversation, or a glass of local vinho.

Step outside to a generous terrace with loungers by the private pool, a built-in barbecue, and sweeping views of the countryside. Whether you're basking in the sun or enjoying an alfresco meal at sunset, Villa Epica is a place where simple pleasures shine.



Facilities

Boat Trips • Cycling • Horse Riding • Villa • Air-Con • Private Pool • Chef/Cook Available • Cots (Cribs) • Has Discount • Special Offer • All Bedrooms En-Suite • Parking Space • Outstanding Landscapes • Coffee Machine • Outdoor Pursuit & Activities • Hairdryer • Tourist Towns & Villages • Laptop Friendly Workspace • Microwave • Satellite TV • New Villas 2025 • Pre-Stocked Fridge Available • Yoga Classes Available • Spa Treatments Available • Transfers Available • Breakfast Available • High Chair(s)

Interior & Grounds

The Villa

Interior - Ground floor

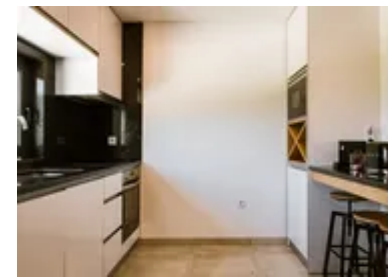
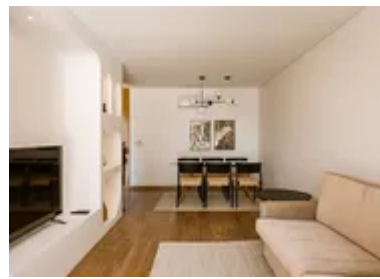
- 2 Fully equipped kitchens
- 2 living, dining areas
- Bedroom 1 - Double bed, en-suite bathroom
- Bedroom 2 - Double bed, en-suite bathroom
- Bedroom 3 - Double bed, en-suite bathroom
- Bedroom 4 - Double bed, en-suite bathroom
- WC

Exterior

- Private swimming pool
- Sunbeds
- Terrace
- Barbecue

Additional Facilities

- Internet/Wi-Fi
- Air conditioning
- TV
- Hairdryer



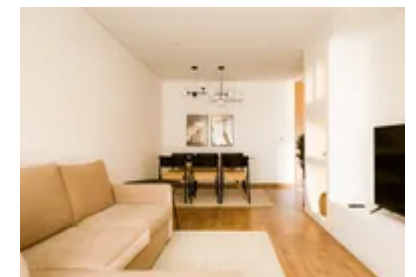
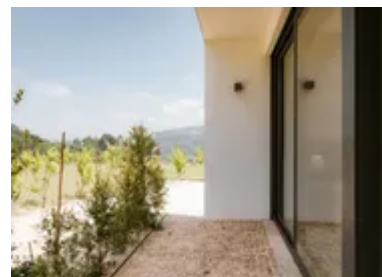
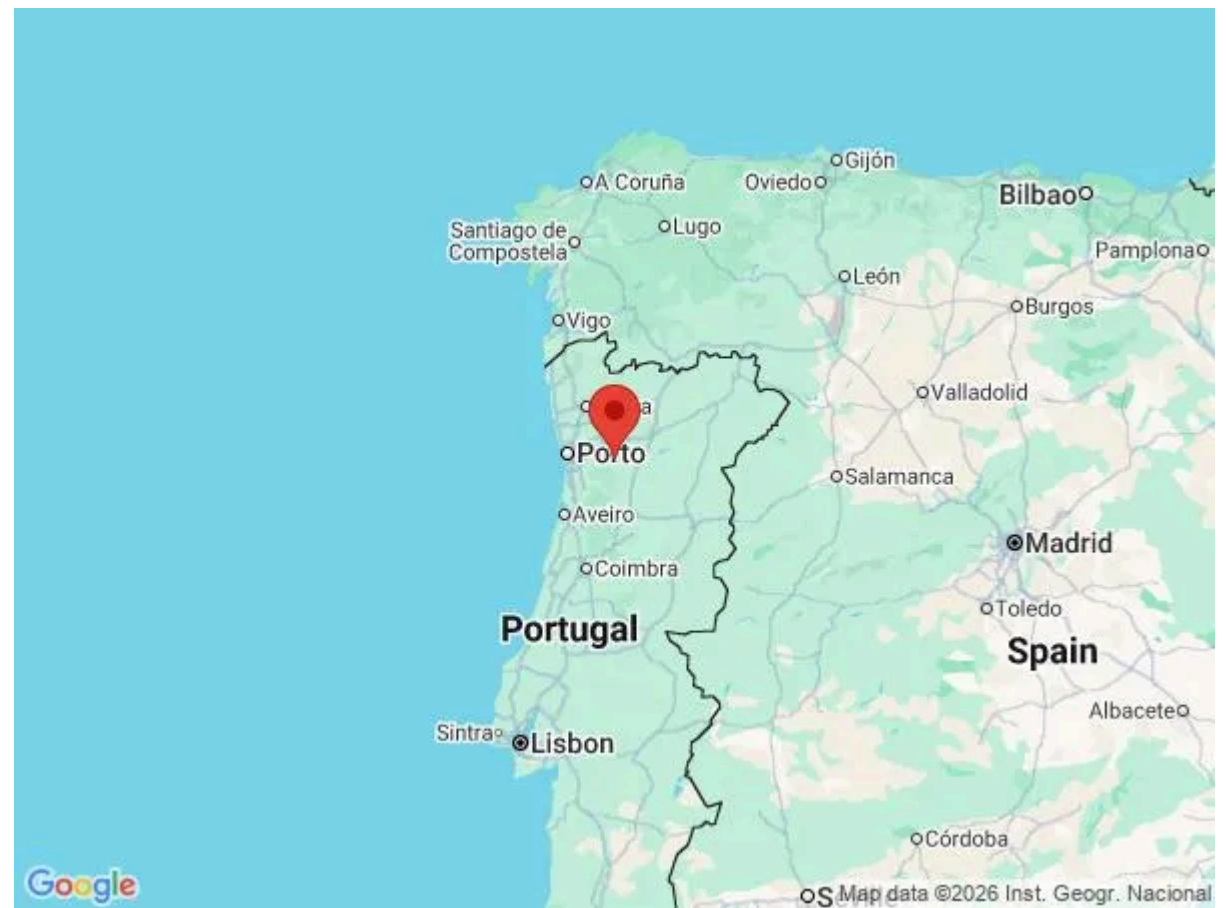
Location & Local Information

Villa Epica is set near Paços de Gaiolo, a peaceful village nestled in the hills of northern Portugal, around four kilometres from the winding curves of the Douro River. This location offers a slower pace of life, with far-reaching views, clean air, and easy access to the region's natural beauty and cultural heritage.

From the villa, it's a short drive to the riverfront, where you can enjoy scenic boat trips, riverside walks, or vineyard tours at some of the Douro Valley's most respected estates. The historic town of Marco de Canaveses is about thirteen kilometres away, offering local restaurants, shops, and rail connections for day trips into Porto. Whether you're exploring the surrounding forests or sampling world-class wines, Villa Epica makes a relaxed and practical base for discovering this UNESCO-listed region.

Local Amenities

Nearest Airport	Porto Airport (70km)
Nearest Beach	Matosinhos Beach (70km)
Nearest Golf	Amarante Golfing (27km)
Nearest Supermarket	Intermarché Cinfães (12km)
Nearest Town	Cinfães (13km)



What we love

- The clean, modern design throughout is ideal for guests who prefer a fresh, uncluttered space.
- All four bedrooms come with en-suite bathrooms, a practical touch for groups or families.
- The peaceful setting is just a short drive from the Douro River – perfect for balancing relaxation with discovery.

What you should know...

- The villa is set in a rural area, so a car is essential for reaching shops, restaurants, and river activities.
- While the pool is a highlight, it isn't fenced – children should be supervised at all times.
- There's no dedicated children's play area or toys, so bringing a few favourites from home may be helpful.
- Each villa can be rented separately if you have a smaller group. Please note that outdoor amenities would be shared. Please get in touch if you wish to book one villa.

Terms & Conditions

- **Security deposit:** €200 paid in cash to the owner upon arrival and refunded upon departure, subject to full inspection.
- **Arrival time:** 3.00 p.m.
- **Departure time:** 11.00 a.m.
- **Energy costs included?:** Yes, included in the rental price.
- **Linen & towels included?:** Yes, included in the rental price.
- **Pets welcome?:** Not allowed.
- **Changeover day:** Flexible.
- **Smoking Allowed?:** Smoking & Vaping are not permitted.
- **Minimum stay:** 4 nights from June to September.
 3 nights from 1st to 30th September and 23rd December to 3rd January.
 2 nights all other dates.
- **Heating costs included?:** Yes, included in the rental price.
- **Tax:** Included in the rental price.
- **Internet access?:** Yes, included in the rental price.
- **Pool towels included?:** Yes, included in the rental price.