

# Aletheia Villas

**Region:** Rhodes **Sleeps:** 6

## Overview

With uninterrupted sea views and golden light spilling through every window, Aletheia Villas bring a calm, contemporary elegance to the rugged beauty of the Lindos coastline. Each of the three villas offers an inviting open-plan layout with floor-to-ceiling glass, a fully equipped kitchen, and bright, stylish living areas that flow seamlessly onto private terraces. Sleeping up to six guests, every villa includes three ensuite bedrooms, two doubles and one twin (which can be converted into a double), along with an additional shower room for added convenience.

Outside, the mood is made for slow mornings and sun-drenched afternoons. Aletheia's terraces frame wide views over Navarone Bay, with private pools, jacuzzi baths and shaded lounge areas setting the scene for total relaxation. There's an outdoor kitchen, barbecue facilities and generous dining space under a white pergola, all perfect for sharing long meals beneath the stars.

Just a ten-minute stroll from Navarone Beach and a scenic twenty-minute walk into Lindos, this collection of villas offers modern design, comfort and privacy in one of Rhodes' most sought-after locations.

## Facilities

Watersports • BBQ • Washing Machine • Villa • Coffee Machine • Seaview • Hairdryer • Boat Trips • Sailing • Historical Sites • Ground Floor Bed & Bath • TV • Walk to Beach • Air-Con • Wi-Fi/Internet • Private Pool • Beach Nearby • Modern • Ideal for Kids • Ideal for Teens • Dishwasher • Heating • Parking Space • Outstanding Landscapes • Outdoor Pursuit & Activities • Tourist Towns & Villages



# Interior & Grounds

## The Villa

*3 bedrooms villas sleeping up to 6 guests with private pool, set in a row of 3 properties*

### *Villas layout*

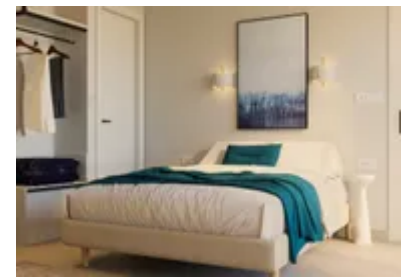
- Open plan kitchen, living and dining room
- Bedroom 1: Large double bed, ensuite
- Bedroom 2: Large double bed, ensuite
- Bedroom 3: Twin beds, ensuite

### *Exterior*

- Private swimming pool
- Cooling Jacuzzi
- Sun loungers
- Outdoor kitchen and dining area
- Lounge furniture

### **Additional Facilities**

- Free onsite parking





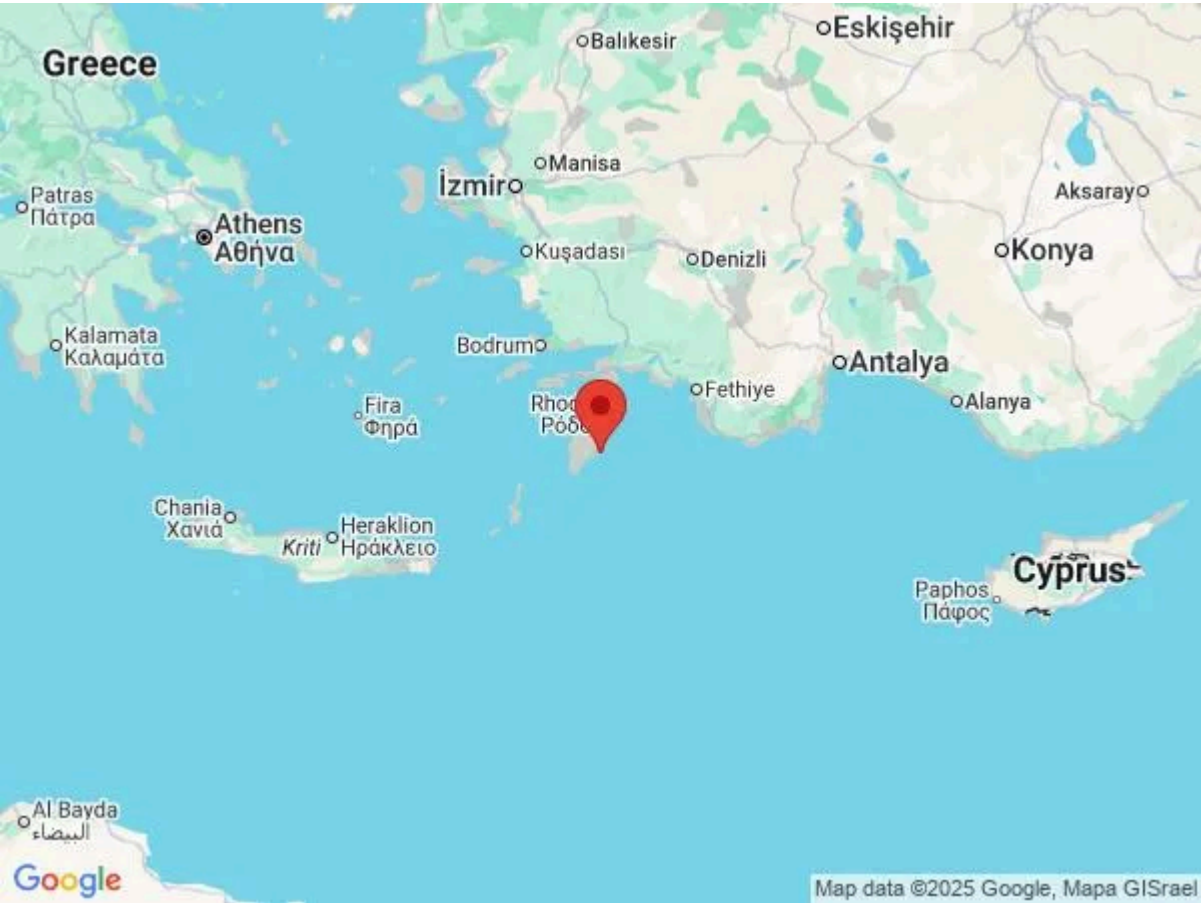
# Location & Local Information

Aletheia Villas sit just outside Lindos, one of Rhodes’ most iconic towns, known for its whitewashed houses, rooftop tavernas and ancient Acropolis. The villas are perfectly placed for exploring on foot, with Navarone Beach just a ten-minute walk away and the lively centre of Lindos reachable in around twenty minutes along a beautiful coastal path.

For ease of travel, a bus stop directly outside the property connects you to Lindos, surrounding beaches and Rhodes Town. In Lindos, guests can browse boutiques, visit historic landmarks, or dine in traditional Greek cafés overlooking the bay. Aletheia’s location strikes the ideal balance between peaceful seclusion and local access, offering a base for both laid-back beach days and island exploration.

## Local Amenities

Nearest Airport	Rhodes International Airport (53 km)
Nearest Beach	Paralia Agios Pavlos (1.5 km)
Nearest Beach	Navarone Bay (700 m)
Nearest Restaurant	Blue Fin Restaurant (900 m)
Nearest Town	Rhodes Old Town (50 km)
Nearest Village	Lindos (2.4 km)



## What we love

- Contemporary villa with private pool, hot tub and striking sea views!
- Three ensuite bedrooms, ideal for families or small groups.
- The villas are a scenic walk or quick drive to both Navarone Beach and Lindos village.

## What you should know...

- Each villa accommodates up to six guests; large groups will need to book multiple villas.
- You will be allocated one of the villas, while they are identical some interiors may differ.
- While the walk into Lindos is scenic, it may feel longer in midday heat, buses or taxis are available nearby.
- The Jacuzzi is unheated

# Terms & Conditions

- **Security deposit:** €400 charged to client's credit card by the owner before/upon arrival and refunded two weeks after departure, subject to full inspection.
- **Arrival time:** 16.00
- **Departure time:** 10.00
- **Energy costs included?:** Yes, included in rental price
- **Linen & towels included?:** Yes, included in rental price
- **Pets welcome?:** Not allowed
- **Other Ts and Cs:** Please note that on occasions, in Greece, extremes in weather can cause water and/ or electric supply to be cut or reduced. Services are normally restored as soon as possible.
- **Changeover day:** Flexible
- **End of stay cleaning available?:** Yes. However, guests are required to leave the accommodation clean, tidy and in the same condition as on their arrival. Any extra cleaning, laundry, maintenance and/or rubbish disposal required will be charged against the security deposit.
- **Smoking Allowed?:** Not permitted
- **Insurance:** Guests are required to be in possession of a valid insurance policy, which covers them for cancellations, personal belongings, personal liability and any accidental damage caused during their stay.
- **Minimum stay:** 5 nights
- **Internet access?:** The property has complimentary Wifi connection. It is good to note that the speed is dependent on local provider and technical issues may cause reduced speed or cut of service.

The Greek government requires owners to collect a Tourist Climate Tax, your property manager will collect this in cash:

March-October €15 per night per unit

November-February €4 per night per unit