

Moulin De Terrac

Region: Dordogne Sleeps: 8

Overview

This beautifully restored former water mill in the heart of Corrèze countryside is a place of rich character, where exposed stone walls and timber beams echo its heritage, and every window frames a view of verdant trees, open skies or water.

Inside Moulin de Terrac, generous living spaces blend comfort with charm, from the spacious kitchen with its American-style fridge and dual ovens, to the inviting dining room and relaxed lounge with Wi-Fi and UK TV. French doors lead out to an elevated dining terrace that overlooks the heated pool and gardens below.

Four thoughtfully designed bedrooms are spread across the upper and lower levels, each with its own ensuite, offering flexibility and privacy for families or groups of friends.

Days at Moulin de Terrac unfold slowly and simply. Start with breakfast on the terrace followed by sunny afternoons poolside and enjoying table tennis or volleyball, while evenings invite long suppers under the stars, perhaps to the gentle sound of frogs from the lake just opposite the house.

Just 2km from the mill, the village of Chamboulive offers everyday essentials including a *boulangerie* and café-bar. Nearby Seilhac, just 7km away, charms with its weekly market and scenic old streets, as well as Lac de Bournazel, where guests can enjoy its lakeside beach, summer swimming, fishing and peaceful nature walks.

For those eager to explore further, the historic town of Tulle lies just 20km away, offering riverside strolls and cultural attractions, while Brive-la-Gaillarde, around 40km from the *moulin*, is known for its vibrant markets and rich heritage. From scenic hiking trails through Corrèze's verdant valleys to the prehistoric wonders of Lascaux and the medieval beauty of Sarlat further afield, this is a region that rewards both relaxation and discovery in equal measure.

Moulin de Terrac is a place to reconnect with nature and each other, where simple pleasures take centre stage and the rhythm of the countryside leads the way.



Facilities

Pure France

Interior & Grounds

House Interiors

Main Floor

- Living room with TV (with UK channels), Wi-Fi internet and door to elevated terrace (overlooking the pool) and access to roadside terrace below
- Dining room with table and chairs
- Kitchen, with hob, two ovens, American-style fridge-freezer, dishwasher, microwave and breakfast table. Door opens to terrace
- Separate WC

First Floor

- Bedroom 1 with double bed and ensuite WC, bath and sink
- Bedroom 2 with double bed and ensuite WC, bath and sink

Lower Ground Floor

- Bedroom 3 with double bed (or twin beds) and steps/door to garden and pool. Ensuite WC, bath and sink
- Bedroom 4 with double bed (or twin beds) and ensuite WC, bath and sink
- Utility room washing machine, dryer, shower and sink
- Separate WC

Outside Grounds

- Heated swimming pool (11x6m)
- Sun terrace and loungers
- Elevated dining terrace with table, 10 chairs and parasol
- Barbecue
- Steps to lawned garden
- Table tennis table and volley ball net
- Open frontage to river and lake (with frogs) opposite the house (just across the road)



Location & Local Information

In the heart of the Corrèze countryside, Moulin de Terrac enjoys a bucolic setting just five minutes from the village of Chamboulive. Set beside a lake with croaking frogs and with river frontage, it's a haven for those seeking space, fresh air and the unspoilt beauty of rural France.

Just over 2km away, Chamboulive provides all essential amenities, including a local café-bar and boulangerie. A little further afield, the lakeside town of Seilhac (7km) offers more dining options and a weekly market brimming with regional produce. Seilhac is a very pretty village with old houses and lovely vistas of the surrounding hills, also home to Lac de Bournazel for nature walks, fishing and a wealth of summer activities including supervised swimming and some watersports in July and August.

Meanwhile, the historic town of Tulle lies just 20km away with its riverside charm, cobbled streets and cultural attractions, while Brive-la-Gaillarde, around 40km from the *moulin*, boasts bustling markets, excellent restaurants and a rich architectural heritage.

Nature lovers will be spoilt for choice. The surrounding Corrèze landscape is laced with scenic trails, perfect for walking, cycling and hiking through forests, gorges and verdant valleys. The region's natural beauty is ever-present, whether you're following a peaceful riverside path or picnicking in the shade of ancient oaks.

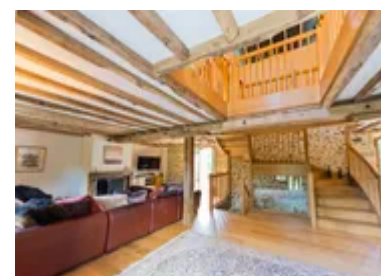
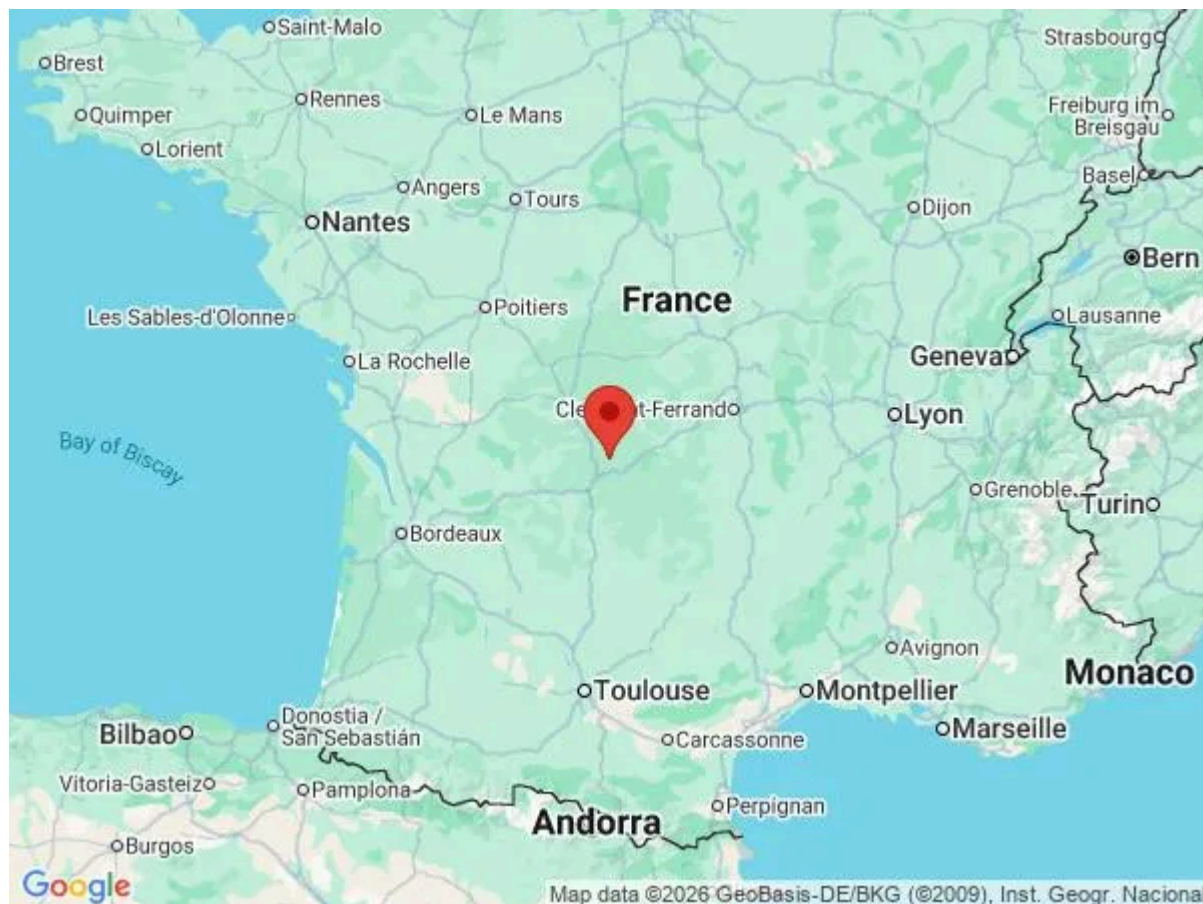
For those craving a bigger adventure, the dramatic volcanic peak of Puy-de-Dôme is less than two hours' drive north-east, offering panoramic views and spectacular walking routes in the Auvergne.

Culture and history are equally close at hand for further memorable day trips. A scenic drive south brings you to the medieval gem of Sarlat-la-Canéda (95km), known for its honey-hued stone architecture and gourmet food scene. Even closer, Montignac and the world-renowned Lascaux International Centre for Parietal Art (just over an hour away) offer a fascinating journey into prehistoric cave art in the Dordogne.

Moulin de Terrac offers guests the best of both worlds - a secluded rural retreat with the charm of nearby towns and the wonders of central France within easy reach.

Local Amenities

Nearest Airport	Brive-Souillac Airport (60 km)
Nearest Airport 2	Limoges Airport (92 km)
Nearest Airport 3	Bergerac Dordogne Périgord Airport (158 km)
Nearest City	Limoges (86 km)



Nearest Golf	Golf du Parc du Coiroux (42 km)
Nearest Restaurant	Chamboulive (2 km)
Nearest Supermarket	Super U (7 km)
Nearest Tennis	La Font Jolie (1)
Nearest Town	Tulle (19 km)
Nearest Town/City	Brive (38 km)
Nearest Train Station	Uzerche (21 km)
Nearest Village	Chamboulive (1 km)

What we love

- Stay in a beautifully restored former water mill, full of character with exposed stone walls and timber beams
- This is an idyllic setting beside a small river and lake – listen out for frogs!
- Each of the four double bedrooms offers comfort and privacy with an en suite bathroom
- Spend leisurely days by the heated pool, playing table tennis or volleyball and evenings dining under the stars
- Just 2km away, Chamboulive has a boulangerie and café-bar for everyday essentials
- Swim, stroll or unwind by the lakeside beach at Lac de Bournazel, only 7km away
- There are many wonderful days out further afield from the dramatic scenery of Puy-de-Dom to the charm of Sarlat-la-Canéda and the Dordogne

What you should know...

- Due to the open river and lake frontage opposite the house, just across the road, careful supervision of children is required (this holiday home is not suitable for young children).

Terms & Conditions

- **Security deposit:** €500 charged to client's credit card by Oliver's Travels as a pre-authorisation at least 2 weeks prior to arrival and refunded two weeks after departure, subject to full inspection.
- **Arrival time:** 4.30 p.m.
- **Departure time:** 10.00 a.m.
- **Energy costs included?:** Yes.
- **Linen & towels included?:** Yes.
- **Pets welcome?:** Yes.
- **Other Ts and Cs:** Weddings, stag/hen parties and any special events are not allowed.
- **Changeover day:** Saturday. All other days on request.
- **End of stay cleaning available?:** Yes.
- **Smoking Allowed?:** Outside only.
- **Minimum stay:** 7 nights. All other durations on request.
- **Heating costs included?:** Yes.
- **Tax:** French Visitors Tax payable to Oliver's Travels at the time of balance payment.