

Manoir Bellevigne

Region: Midi-Pyrenees Sleeps: 12

Overview

Dating back to 1750, Manoir Bellevigne has been meticulously renovated to the highest standards. The manor offers superb accommodation over two floors, with a large, bespoke kitchen, utility room, spacious dining and living areas, a library and playroom. Upstairs, there are four double bedrooms (three ensuite), two twin rooms, and a single room, complemented by two additional family bathrooms. A mezzanine gallery features a comfortable living area with a flat-screen TV, while a private office on a second mezzanine provides a quiet working space.

Set on a 25-acre estate, the property boasts private grounds with gardens, vineyards, and woodland, offering uninterrupted views of the surrounding countryside. The outdoor space includes a private pool, a tennis court with racquets and balls, a large lawned garden, and a private drive. A restored old chai provides a versatile party room with a Bose SoundDock system and a sunny terrace overlooking the vineyards, alongside an indoor games area with table tennis and table football.

The manor is ideally located just five minutes from Montréal, a historic bastide village with bakery, café, pharmacy, and restaurants, and fifteen minutes from both Condom and Éauze, offering supermarkets, artisanal shops, markets, and a Michelin-starred restaurant. Manoir Bellevigne combines elegant living with countryside relaxation and access to local culture and amenities.

Facilities

Pure France • Tennis Court • Wine Tasting • Private Pool • Cycling • Historical Sites • Horse Riding • Walking/Hiking Paths • Pets on Request • Manor • Parking Space • Wi-Fi/Internet • BBQ • Rural Location • Washing Machine • Outstanding Landscapes • Outdoor Pursuit & Activities • Tourist Towns & Villages • TV • Table Tennis • Indoor Games • Dishwasher • Satellite TV • Table Football



Interior & Grounds

Villa Interiors

Main house

Ground floor

- Fully equipped kitchen with kitchen island, breakfast table, hob, oven, dishwasher, fridge and freezer
- Utility rooms with washing machine, dishwasher, fridge and freezer
- Guest WC
- Dining room
- Living room
- Library
- Children's playroom

First floor

- Bedroom with two children's single beds
- Bedroom with children's single bed
- Bathroom with bath/shower, sink and WC
- Bedroom with king-size double bed and ensuite bathroom with bath/shower, sink and WC
- 2 x bedrooms with super king-size double beds and ensuite bathrooms with bath/showers, sinks and WCs
- Bedroom with king-size bed
- Bathroom with bath/shower, sink and WC
- Bedroom with two single beds

Mezzanine gallery

- Living area with TV and bean bags
- Study

Outside Grounds

- Private swimming pool (12m x 5.5m)
- Sun terrace with loungers and parasols
- 25 acres of private grounds
- Outdoor dining terrace
- Barbecue
- Tennis court
- Restored Chai with table tennis and table football
- Parking

Facilities

- WiFi
- TV
- Washing machine
- Fireplace
- Table tennis
- Table football



Location & Local Information

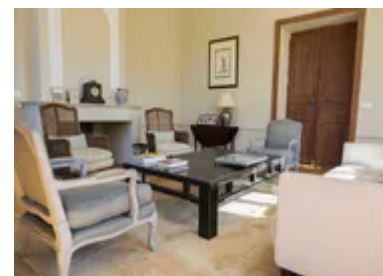
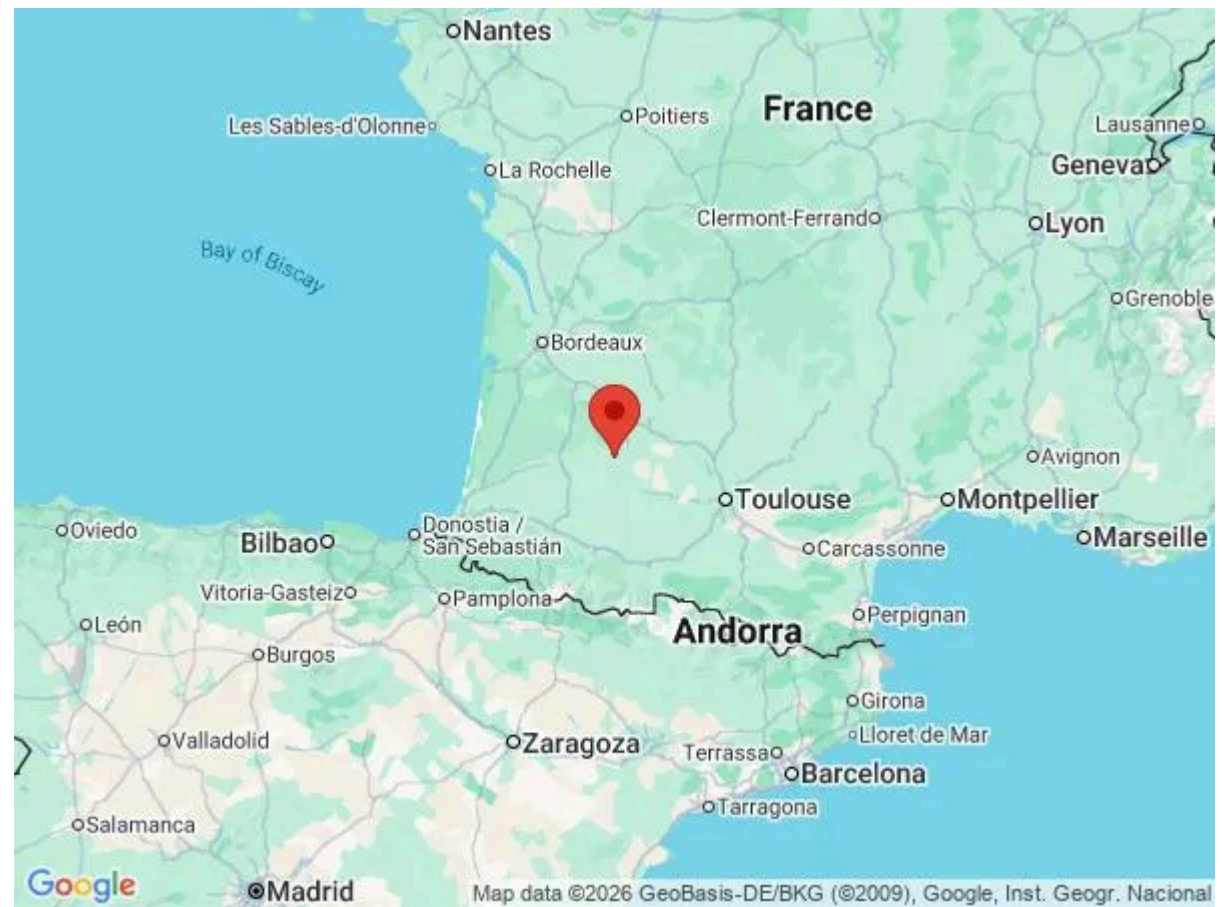
Located in the serene countryside, just five minutes from Montréal and fifteen from Condom, Manoir Bellevigne offers a relaxing retreat while keeping you close to charming towns and essential amenities. In Montréal, discover a delightful bakery, grocery store, café bar, and an excellent restaurant with an outdoor brasserie. Just a short drive away, Condom and Éauze offer big supermarkets, artisanal shops, and vibrant markets, including a Michelin-starred dining experience in Éauze, the celebrated Armagnac Capital.

Explore the rich culture and lively markets of the region, with towns such as Mézin (15 minutes), Nérac (30 minutes), Auch (45 minutes), and Agen (50 minutes) within easy reach. Outdoor markets are held throughout the week, with evening markets on Fridays, perfect for tasting local produce and mingling with locals.

For longer journeys, international airports in Bordeaux and Toulouse are around two hours away, with Biarritz and Pau accessible within two and a half hours. Manoir Bellevigne combines relaxing countryside living with access to culture, gastronomy, and outdoor pursuits, creating an idyllic base for exploring the heart of southwestern France.

Local Amenities

Nearest Airport	Toulouse-Blagnac Airport (126km)
Nearest Airport 2	Pau-Pyrenees Airport (103km)
Nearest Airport 3	Bordeaux Airport (157km)
Nearest City	Toulouse (128km)
Nearest City	Pau (121km)
Nearest Golf	Golf d'Eauze Grand Armagnac (14km)
Nearest Restaurant	Montréal (5km)
Nearest Supermarket	Eauze (15km)
Nearest Town	Agen (57km)



What we love

- Dating from 1750, fully renovated to the highest standards while retaining original features.
- Gardens, vineyards, woodland, large lawn and uninterrupted countryside views.
- Private swimming pool, tennis court with racquets and balls, sunny terraces, and restored old chai for entertaining.
- Five minutes from Montréal for local amenities, fifteen minutes from Condom and Éauze with markets, artisanal shops and restaurants.

What you should know...

- We recommend hiring a car to explore this beautiful area.

Terms & Conditions

- **Security deposit:** €750 charged to client's credit card by Oliver's Travels as a pre-authorisation at least 2 weeks prior to arrival and refunded two weeks after departure, subject to full inspection.
- **Arrival time:** 4.00 p.m.
- **Departure time:** 10.00 a.m.
- **Energy costs included?:** Yes.
- **Linen & towels included?:** Yes.
- **Pets welcome?:** On request only and with prior agreement with the owner.
- **Other Ts and Cs:** Weddings, stag/hen parties and any special events are not allowed.
- **Changeover day:** Saturday.
- **Smoking Allowed?:** Not allowed.
- **Minimum stay:** 7 nights.
- **Heating costs included?:** Yes.
- **Tax:** French Visitors Tax payable to Oliver's Travels at the time of balance payment.
- **Pool towels included?:** Not included.
- **Pool opening dates?:** Please note that pool opening dates are subject to local weather conditions and pool maintenance requirements and that cooler months may not be suitable for swimming.