

# Domaine De La Saule

**Region:** Dordogne   **Sleeps:** 12

---

## Overview

Domaine de la Saule is an exceptional, traditional property, fully renovated to a high standard. Located at the end of a private drive, the house sits within 7 hectares of landscaped grounds, offering panoramic hilltop views across the surrounding countryside. The property comprises the main house and a superb adjacent garden house, both designed with comfort and style in mind.

The main house features front and rear terraces, spacious living and dining areas, and a fully equipped kitchen, all opening onto the gardens and terraces. Upstairs, a games and TV room with table football provides entertainment for all ages. The five bedrooms and two bathrooms are finished to a high standard, ensuring a relaxing stay. The garden house mirrors this quality, with an open-plan living, dining, and kitchen area, a double bedroom with an original high-beamed ceiling, and a private bathroom.

Outside, the 7 hectares of grounds offer uninterrupted views and a private swimming pool. A walled terrace with dining furniture and table tennis completes the outdoor experience. Local amenities include a bakery in Fons, 10 minutes' walk away, while Assier and Lacapelle-Marival provide shops, cafés, and supermarkets. Figeac, just 10 minutes' drive, offers riverside charm and a wide choice of restaurants.

## Facilities

Horse Riding • Pure France • BBQ • Washing Machine • Boat Trips • Cycling • Historical Sites • Canoeing/Kayaking • Wi-Fi/Internet • Walking/Hiking Paths • Fishing • Wine Tasting • TV • Private Pool • DVD • Table Tennis • Ideal for Kids • Ideal for Teens • <1hr to Airport • Tumble Dryer • Dishwasher • Microwave • Table Football • Parking Space • Outstanding Landscapes • Outdoor Pursuit & Activities • Tourist Towns & Villages



# Interior & Grounds

## Villa Interiors

### Main house

#### Ground floor

- Kitchen with breakfast table, microwave, dishwasher, fridge, freezer, oven and hob
- Utility room (exterior access) with fridge, washing machine and dryer
- Dining room
- Living room with TV
- Guest WC

#### First floor

- Living room with TV, table football and library
- Bedroom with double bed and ensuite bathroom with bath/shower and sink
- Guest WC

#### Second floor

- 3 x bedrooms with double beds
- Bathroom with bath, shower and twin sink
- Guest WC
- Bedroom with double sofa bed

### Garden house

#### Ground floor

- Open plan living area
- Kitchen with fridge, freezer, dishwasher, oven, hob and microwave

#### First floor

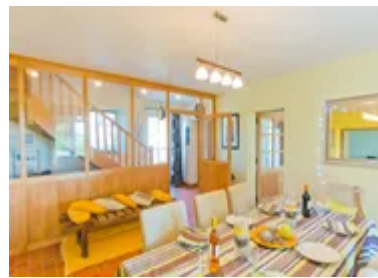
- Bedroom with double bed
- Bathroom with shower and twin sink
- Guest WC

### Outside Grounds

- Private swimming pool (15m x 6m) with pool cover
- Sun terrace with loungers
- Front terrace
- Dining terrace
- Seating area
- Barbecue
- Table tennis
- 7 hectares of private grounds
- Parking

### Facilities

- WiFi
- TV
- DVD
- Washing machine and dryer



- Table football
- Library

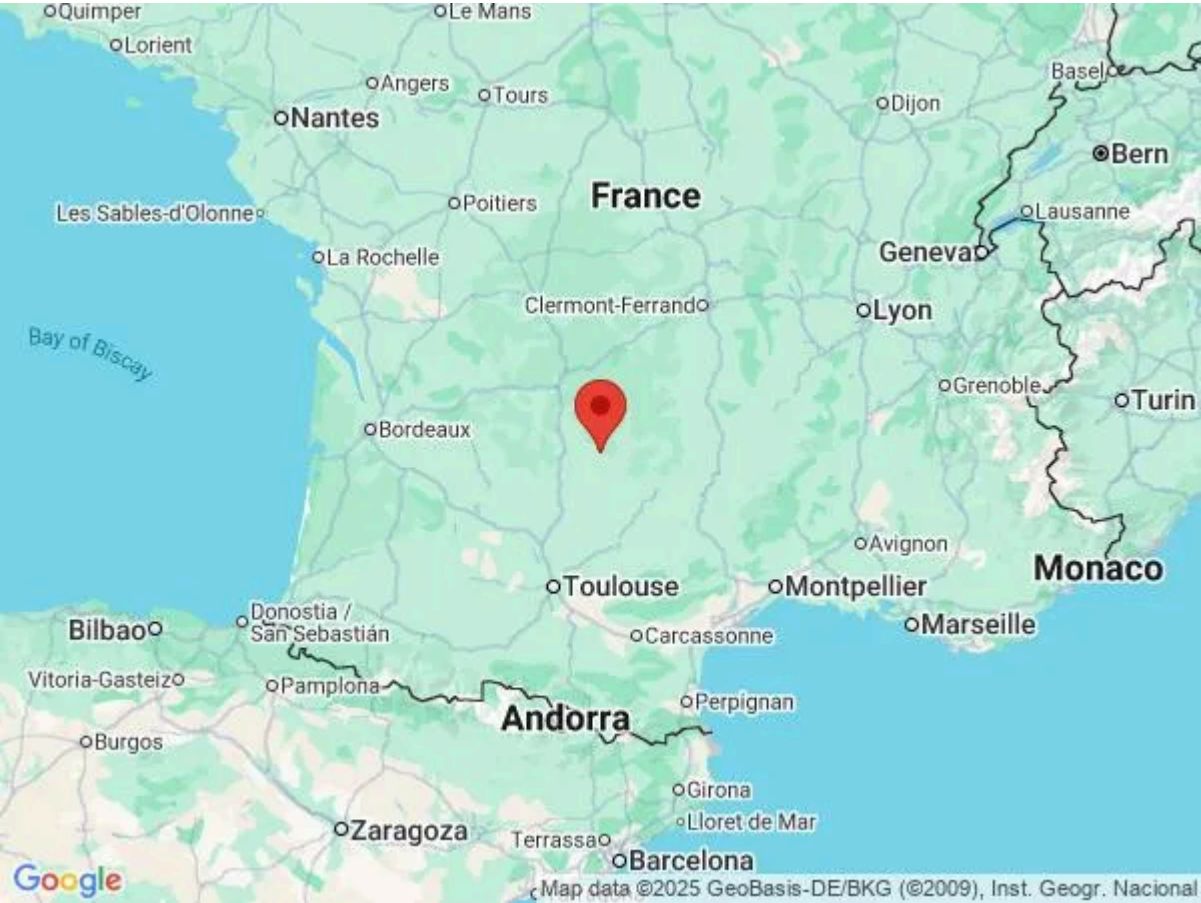
# Location & Local Information

Domaine de la Saule is perfectly located in the heart of the Lot department, surrounded by open countryside yet only 10 minutes from the lively town of Figeac. This charming riverside town offers a wealth of restaurants, cafés, and shops to explore, along with its medieval streets and vibrant weekly market. Just a short walk from the property, you will find a traditional bakery in the village of Fons, while nearby Assier provides all essential amenities including a grocery store, restaurants, and café bars. For larger shops, Lacapelle-Marival with its supermarket is just 7 km away.

The region is rich in outdoor activities, with horse riding, fishing, and boating available on the nearby rivers, offering an authentic taste of rural French life. Culture lovers will appreciate the wealth of historic sites within easy reach, from the breathtaking cliffside sanctuary of Rocamadour to the golden-stoned beauty of Sarlat-la-Canéda and the wine capital of Cahors. Whether you are seeking an escape or a base to explore the treasures of southwest France, Domaine de la Saule provides the perfect blend of relaxation and discovery.

## Local Amenities

Nearest Airport	Brive–Souillac Airport (81km)
Nearest Airport 2	Toulouse-Blagnac Airport (175km)
Nearest City	Toulouse (175km)
Nearest Restaurant	Fons (3km)
Nearest Supermarket	Figeac (10km)
Nearest Town	Figeac (11.5km)
Nearest Train Station	Figeac (19km)
Nearest Village	Fons (3km)



## What we love

- Set on 7 hectares of private grounds, Domaine de la Saule offers panoramic views across the Lot countryside, perfect for relaxing and unwinding.
- A private swimming pool, walled terrace with dining furniture, and table tennis make outdoor living fun for all ages.
- Just 10 minutes from Figeac, with a local bakery in Fons, shops and cafés in Assier, and supermarkets in Lacapelle-Marival.

## What you should know...

- For smaller groups, the main house can be rented on its own at a reduced rate. Please enquire for more details.
- We recommend hiring a car to explore this beautiful area.



# Terms & Conditions

- **Security deposit:** €1500 charged to client's credit card by Oliver's Travels as a pre-authorisation at least 2 weeks prior to arrival and refunded two weeks after departure, subject to full inspection.
- **Arrival time:** 4.00 p.m.
- **Departure time:** 10.00 a.m.
- **Energy costs included?:** Yes.
- **Linen & towels included?:** Yes.
- **Pets welcome?:** Not allowed.
- **Other Ts and Cs:** Weddings, stag/hen parties and any special events are not allowed.
- **Changeover day:** Saturday.
- **Smoking Allowed?:** Not allowed.
- **Minimum stay:** 7 nights.
- **Tax:** French Visitors Tax payable to Oliver's Travels at the time of balance payment.
- **Pool towels included?:** Not included.
- **Pool opening dates?:** Please note that pool opening dates are subject to local weather conditions and pool maintenance requirements and that cooler months may not be suitable for swimming.