

Domaine Du Chateau

Region: France Sleeps: 12

Overview

Framed by the gentle slopes of Burgundy landscapes, this remarkable 17th-century manor house has been brought back to life with care, craft and impeccable taste. What was once a crumbling relic is now a high-end country home set within 20 acres of private land. From its elevated position, uninterrupted views sweep across the valley.

Inside, the renovation balances heritage and comfort, preserving the character of the original building while introducing sophisticated modern touches. The main house features a striking reception room anchored by a centuries-old wine press and fireplace, alongside a warm and sociable farmhouse kitchen. Split over two staircases, the upper floor comprises four double bedrooms, each with its own ensuite bathroom and air conditioning. Just steps away across the courtyard, a separate converted building houses two further ensuite bedrooms with air-conditioning, allowing this converted farmhouse to sleep up to 12 guests.

Outdoors, begin your day with croissants in the courtyard, linger over lazy lunches on the rear terrace, or sip aperitifs overlooking the pool below as dusk settles over the hills. The heated swimming pool and expansive grounds invite both play and pause, whether that's a swim, a stroll through the gardens or a glass of local wine under the trees.

The property's location is another jewel in its crown. Less than ten minutes from the villages of Nolay and Saint-Léger-sur-Dheune, daily essentials are close at hand, while the historic wine town of Beaune, just 35 minutes away, offers a wealth of gastronomic and cultural delights. Surrounded by some of Burgundy's most revered vineyards, it's the ideal base for wine-tasting adventures and relaxed rural escapes alike.

Facilities

Catered • Pure France • Weddings • Villa • Scuba Diving • Cycling • Historical Sites • Watersports • Walking/Hiking Paths • Walk to Village • Romantic • Ideal for Kids • Air-Con • Wine Tasting • Wow Factor • Special Offer • Has Discount • Cots (Cribs) • Heated Pool • Manor • Walk to Beach • Ideal for Teens • Instagrammable • All Bedrooms En-Suite • Beach Nearby • Modern • <1hr to Airport • Walk to Restaurant • Parking Space • Wi-Fi/Internet • Seaview • BBQ • On-Street Parking • Easy By Train • Washing Machine • Outstanding Landscapes • Outdoor Pursuit & Activities • Tourist Towns & Villages • TV • Hot Tub • Dishwasher • Smart TV • Table Football • Heating • Ideal for Babies & Toddlers • High Chair(s)



Interior & Grounds

Main House Interiors

- Living and dining area with fireplace, original wine press, sofas, bar, dining table and doors leading to courtyard and rear terrace for al-fresco dining
- Farmhouse kitchen, well-equipped including central island, two dishwashers, range oven and two fridge-freezers. Door leads to front courtyard
- TV lounge with piano and door leading to terrace and garden
- Utility room with two washing machines and dryers
- 2 x separate WCs

First Floor Wing I

- Bedroom 1 with king-size double bed (can be two singles), air-conditioning and en suite bathroom with shower, sink and WC
- Bedroom 2 with double bed, air-conditioning and en suite bathroom with shower, sink and WC

First Floor Wing II

- Bedroom 3 with double bed, air-conditioning and en suite bathroom with shower, sink and WC
- Bedroom 4 with double bed, air-conditioning and en suite bathroom with shower, sink and WC

Courtyard Annexe House (10m away)

Ground Floor

- Bedroom 5 with king-size double bed (can be two singles), air-conditioning and en suite bathroom with shower, sink and WC

First Floor (stairs directly into room)

- Bedroom 6 with double bed, air-conditioning and en suite bathroom with shower, sink and WC

Outside Grounds



- Heated swimming pool (10x4m)
- Poolside terrace and sun loungers
- Terrace above pool with dining table and chairs
- Rear terrace with al-fresco dining and relaxation area
- Original bread house and oven
- Extensive gardens with views (different/terraced levels in parts)
- 20-acre private grounds with woodland, vineyards and grassed areas
- Central courtyard with table and chairs
- Parking (central courtyard)

Location & Local Information

In an elevated setting surrounded by 20 acres of rolling Burgundy countryside with wonderful valley views, Domaine du Château is perfectly positioned in the Saône-et-Loire department between the celebrated wine towns of Beaune (27km) and Chalon-sur-Saône (30km). Whether you're relaxing by the pool or exploring the nearby vineyards and villages, this location brings together rural elegance with renowned gastronomic and cultural experiences.

Just a 10-minute drive from the property lie the towns of Nolay and Saint-Léger-sur-Dheune, where you'll find essential amenities such as bakeries, small supermarkets, and local eateries. The historic village of Nolay, known for its timber-framed market hall, is also the starting point of the *Voie des Vignes*, a spectacular cycling and walking trail that winds its way through Puligny-Montrachet, Meursault, Volnay, and Pommard on its way to Beaune and even Dijon. This route offers an unforgettable way to experience the heart of the Côte d'Or vineyards, passing ancient stone walls, scenic vine-covered slopes and timeless wine estates.

For wine connoisseurs, the region is a treasure trove of tasting experiences. Explore prestigious domaines along the Route des Grands Crus, or immerse yourself in the wine culture of Beaune, home to the iconic Hospices de Beaune and a wide range of excellent restaurants and markets. The walled town is not only a hub for Burgundy's vinous heritage but also a charming place to spend a leisurely afternoon wandering cobbled streets and sipping fine wine in a pretty square.

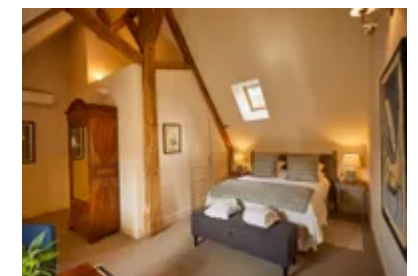
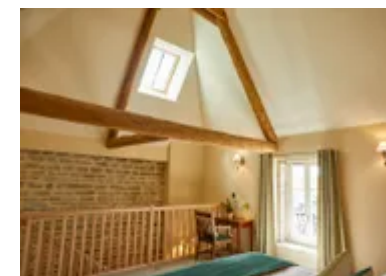
Nearby Chagny (14km) offers another layer of indulgence, particularly on Sunday mornings when its vibrant market draws food lovers from far and wide. This small town also boasts Michelin-starred dining at Maison Lameloise, perfect for a memorable lunch or evening meal after a day of exploring the vineyards (book ahead!).

From leisurely countryside cycles to world-class wine tasting and picturesque village visits, Domaine du Château is perfectly placed for discovering the best of Burgundy's famed wine country – all from the comfort of your own private sanctuary.



Local Amenities

Nearest Airport	Aéroport de Chalon-Champforgeuil (12 km)
Nearest Airport 2	Dijon-Bourgogne (75 km)
Nearest Airport 3	Lyon-Saint Exupéry (170 km)
Nearest Bar/Pub	(5 km)



Nearest City	Chalon-sur-Saône (16 km)
Nearest Restaurant	(2 km)
Nearest Shop	(2 km)
Nearest Supermarket	(5 km)
Nearest Town	Nolay (5 km)
Nearest Village	Charrecey (1 km)

What we love

- A beautifully restored 17th-century manor set on 20 acres of Burgundy countryside
- Interiors blend rustic charm with modern comforts – think original wine press, farmhouse kitchen and air-conditioned ensuite bedrooms
- Enjoy glorious valley views from the elevated terrace and heated outdoor pool
- The domaine also works as a wedding venue, on request, and ask about fully catered speciality gastronomic stays
- Just a short drive to the charming villages of Nolay and Saint-Léger-sur-Dheune for local markets and essentials
- Explore the prestigious vineyards and gastronomic scene of nearby Beaune, only 35 minutes away

What you should know...

- There are four bedrooms in the main house (across two separate wings) and two bedrooms in a separate courtyard annexe – please see the “Layout” tab for further information.
- Air-conditioning is featured in the bedrooms only.

Terms & Conditions

- **Security deposit:** €1,000 charged to client's credit card by Oliver's Travels as a pre-authorisation at least 2 weeks prior to arrival and refunded two weeks after departure, subject to full inspection.
- **Arrival time:** 4.00 p.m.
- **Departure time:** 10.00 a.m.
- **Energy costs included?:** Yes.
- **Linen & towels included?:** Yes.
- **Pets welcome?:** Not allowed.
- **Other Ts and Cs:** Air-conditioning is featured in the bedrooms only.
- **Changeover day:** Saturday.
- **End of stay cleaning available?:** Standard changeover clean included in the price. Guests are required to leave the accommodation clean, tidy and in the same condition as on their arrival. Any extra cleaning, laundry, maintenance and/or rubbish disposal required will be charged against the security deposit.
- **Smoking Allowed?:** Smoking and vaping are not permitted.
- **Minimum stay:** 7 nights. All other durations on request.
- **Heating costs included?:** Yes.
- **Tax:** French Visitors Tax payable to Oliver's Travels at the time of balance payment.