

Le Cube

Region: Dordogne **Sleeps:** 6

Overview

With striking geometric lines and an elevated position overlooking the northern Dordogne countryside, Le Cube is a one-of-a-kind architectural masterpiece that redefines rural luxury.

Conceived by an internationally renowned architect, this bold, contemporary retreat rises from its hillside setting to command panoramic views of the valley below. From the moment you arrive, there's a sense of sophistication thanks to its form, light and space.

Spread across three levels and crowned by a roof terrace, the house is built for seamless indoor-outdoor living. Large glass doors flood the open-plan living area with natural light, opening onto a decked terrace that becomes part of the home itself. Here, long al-fresco lunches stretch into dinners on warm summer evenings, framed by gorgeous countryside views. The heart of the house features a sleek kitchen with central island, a lounge with wood-burning stove for cooler evenings alongside interesting furnishings and artwork.

Three beautifully appointed bedrooms are distributed across the upper and lower levels, offering privacy and flexibility for families or friends travelling together. One bedroom, with its four-poster bed, air-conditioning and ensuite bathroom, is perched on the first floor whilst two further bedrooms and two bathrooms (one en suite) are tucked into the lower level with direct garden access, sharing a convenient kitchenette.

Outside, the scene is equally impressive. On a raised terrace above the grounds below, the heated infinity pool stretches out toward the horizon, flanked by sun loungers and a shaded seating area for slow afternoons. Enclosed within several acres of private woodland and lawns, the grounds below invite both exploration and quiet reflection with an abundance of wildlife.

Le Cube lies just a short stroll from the village of Lusignac, where a charming café bar/restaurant offers simple pleasures within walking distance. A short drive brings you to Saint-Séverin or Verteillac for daily essentials and lively local markets, while the town of Ribérac, only fifteen minutes away, hosts cultural events, excellent dining and a famous Friday morning market. For deeper discoveries, Périgueux is under an hour away with its vibrant medieval heart and wider amenities or venture south to Bergerac and its vineyards beside the Dordogne River.

For those in search of a modern escape in the authentic French countryside, Le Cube offers a rare combination: bold design and the soul-stirring beauty of the Dordogne at your feet.



Facilities

Pure France • Walk to Village • Romantic • Historical Sites • Cycling • Walking/Hiking Paths • Ideal for Kids • Villa • Private Pool • Horse Riding • Wine Tasting • Fishing • Air-Con • Golf Nearby • Canoeing/Kayaking • Ideal for Teens • Wow Factor • Heated Pool • Ground Floor Bed & Bath • Modern • Parking Space • Walk to Restaurant • Wi-Fi/Internet • Rural Location • Washing Machine • Outstanding Landscapes • Tourist Towns & Villages • TV • DVD • Dishwasher • Smart TV • Working Fireplace/Woodburner • Heating

Interior & Grounds

House Interiors

Main Floor

- Entrance hall
- Open-plan living and dining area with high ceiling, wood-burning stove, sofas, TV, DVD, Wi-Fi internet and dining table. Large glass doors open to decked terrace for al-fresco dining
- Open-plan kitchen with central island, stools, oven and hob and dishwasher
- Separate WC and sink

Upper Floor (via open-tread stairs)

- Mezzanine office area
- Bedroom 1 with four poster double bed, air-conditioning and ensuite shower room with WC, shower and sink

Lower Ground Floor (via open-tread stairs)

- Kitchenette
- Bedroom 2 with double bed, garden access and ensuite bathroom with WC, bath/shower and sink
- Bedroom 3 with two single beds and garden access
- Bathroom with WC, bath / shower, sink and washing machine

Outside Grounds (with steps and different levels)

- Heated infinity pool (12x3m)
- Poolside terrace with sun loungers and seating area
- Dining terrace
- Extensive hillside private grounds with grassed area and oak woodland
- Staircase to roof terrace from first floor balcony
- Private gated drive and parking



Location & Local Information

Set in several acres of private grounds, Le Cube offers a stunning escape in the heart of the northern Dordogne countryside just a short walk along the country road (no pavement) from the sleepy village of Lusignac with its café-bar/restaurant. With extensive views, this architect-designed villa balances modern style with rural authenticity and an abundance of wildlife all around you.

Within a ten-minute drive lie the vibrant villages of Saint-Séverin (5km) and Verteillac (6.5km), where you'll find everything from bakeries to bustling cafés, restaurants and local supermarkets. For a deeper dive into local life, Ribérac, just 15 minutes away, is known for its cultural events, excellent dining options and famous Friday morning market.

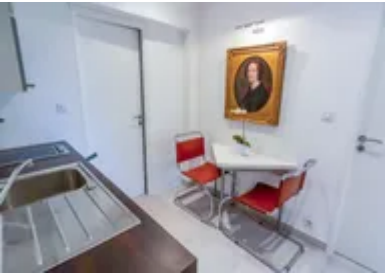
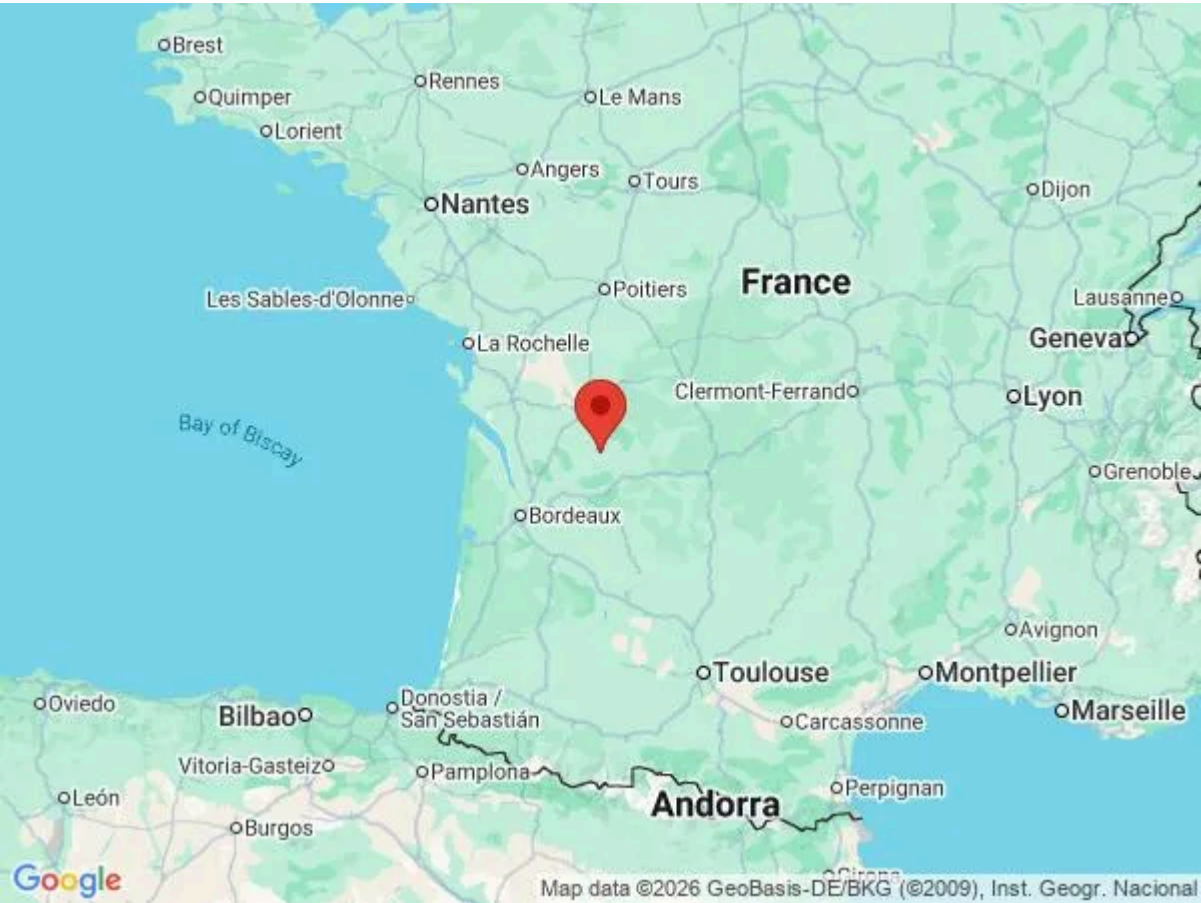
Cultural and historical gems abound nearby. The pretty riverside village of Aubeterre-sur-Dronne (14km), officially one of the Plus Beaux Villages de France, boasts an extraordinary monolithic church carved into the rock and a vibrant square lined with cafés. History lovers will relish visits to the Château de Bourdeilles (27km) and the fairytale town of Brantôme en Périgord (41km), where the abbey and riverside setting make for a perfect day trip.

Further afield, the medieval streets and Roman heritage of Périgueux (48km) await, offering wonderful markets and gourmet restaurants just under an hour from your doorstep.

For wine aficionados and explorers alike, day trips to the world-renowned vineyards of Saint-Émilion (75km) or the charming riverside town of Bergerac (62km) offer the chance to sample some of the region's finest vintages amidst stunning countryside.

Local Amenities

Nearest Airport	Bergerac Dordogne Périgord Airport (75 km)
Nearest Airport 2	Angoulême-Cognac Airport (58 km)
Nearest Airport 3	Bordeaux-Mérignac Airport (128 km)
Nearest Bar/Pub	(0.1 km)
Nearest City	Périgueux (55 km)
Nearest Golf	Golf d'Aubeterre (15 km)
Nearest Restaurant	(3 km)



Nearest Shop	(2 km)
Nearest Supermarket	(7 km)
Nearest Tennis	Verteillac (7 km)
Nearest Town	Saint-Séverin (5 km)
Nearest Train Station	ngoulême TGV (58 km)
Nearest Village	Lusignac (0.1 km)

What we love

- A bold architectural statement in the northern Dordogne with breathtaking panoramic views
- Sleek indoor-outdoor living, with vast glass doors opening onto a decked terrace and alfresco dining space
- Thoughtfully designed layout across three levels, including a rooftop terrace and secluded bedrooms, some with garden access
- Enjoy the heated infinity pool with horizon-stretching views, surrounded by woodland, wildlife and lawns
- Walk to the village of Lusignac for a relaxed drink or dinner at the local café-restaurant
- Explore nearby Ribérac's vibrant Friday market, soak up the charm of Brantôme en Périgord or picnic beside the river in Aubeterre-sur-Dronne
- Superb day trips include Périgueux, Bergerac and Saint-Émilion for fine food, wine-tasting and rich history

What you should know...

- Guests need to be able to safely manage open-tread stairs and different levels at this stunning home – the swimming pool is raised above the surrounding grounds (via stairs) and the main floor is on the mid-level (the views are incredible!).
- It's a fairly easy walk to the village of Lusignac along the country road (no pavement).

Terms & Conditions

- **Security deposit:** €1,000 charged to client's credit card by Oliver's Travels as a pre-authorisation at least 2 weeks prior to arrival and refunded two weeks after departure, subject to full inspection.
- **Arrival time:** 4.00 p.m.
- **Departure time:** 10.00 a.m.
- **Energy costs included?:** Yes.
- **Linen & towels included?:** Yes.
- **Pets welcome?:** Not allowed.
- **Other Ts and Cs:** Weddings, stag/hen parties and any special events are not allowed.
- **Changeover day:** Saturday.
- **End of stay cleaning available?:** Standard changeover clean included in the price. Guests are required to leave the accommodation clean, tidy and in the same condition as on their arrival. Any extra cleaning, laundry, maintenance and/or rubbish disposal required will be charged against the security deposit.
- **Smoking Allowed?:** Smoking and vaping are not permitted.
- **Minimum stay:** 7 nights. All other durations on request.
- **Heating costs included?:** Yes.
- **Tax:** French Visitors Tax payable to Oliver's Travels at the time of balance payment.