

La Jolie Vue

Region: Midi-Pyrenees **Sleeps:** 8

Overview

La Jolie Vue gazes out over undulating fields, where golden sunlight plays across patchwork farmland and the air carries the hum of rural life. This beautifully restored farmhouse is tucked within a little hamlet in the Gers countryside, offering a refined yet relaxed escape for families or groups in search of authenticity, space and soul-stirring views.

Inside, the interiors blend traditional warmth with graceful, country-chic touches. With four double bedrooms, each with its own ensuite, La Jolie Vue invites rest and retreat. The farmhouse-style kitchen, complete with breakfast table and characterful fireplace, flows into a charming dining room and two separate sitting rooms, one of which opens onto the garden with sweeping countryside views.

A shaded dining terrace, complete with barbecue, sets the scene for long summer lunches. A private pool with sun deck and loungers sits perfectly positioned for all-day sun and afternoon swims, with a summer kitchen for effortless al-fresco living.

The surrounding area is rich in Gascon charm. Just a short drive away lies the market village of Saint-Clar, famed for its white garlic and bustling summer marché. You'll find cafés-bars, bakeries and a local pizzeria here, alongside the much-visited Maison de l'ail on the edge of the village.

Further afield, the historic towns of Lectoure, Fleurance and Mauvezin are all within a half an hour, each offering their own flavour of local life, from traditional weekly markets to family-run restaurants.

Whether you're dining under the stars, exploring nearby hilltop villages or simply soaking in the view with a glass of local wine, La Jolie Vue invites you to slow down and embrace every moment.

Facilities

Wi-Fi/Internet • Pure France • BBQ • Washing Machine • Cycling • Tennis Nearby • Historical Sites • Canoeing/Kayaking • Walking/Hiking Paths • TV • Ground Floor Bed & Bath • Private Pool • Ideal for Babies & Toddlers • Ideal for Kids • Ideal for Teens • <1hr to Airport • Tumble Dryer • Dishwasher • Microwave • All Bedrooms En-Suite • Parking Space • Outstanding Landscapes • Outdoor Pursuit & Activities • Tourist Towns & Villages



Interior & Grounds

House Interiors

Ground Floor (with air-conditioning)

- Entrance hall
- Living room with TV, Wi-Fi, extensive views and door to garden
- Dining area with fireplace
- Second living room
- Kitchen with breakfast table and chairs and inset fireplace, well-equipped including dishwasher, fridge freezer, oven and hob and microwave
- Bathroom with shower and WC
- Bedroom 1 with double bed and ensuite bathroom with WC, shower and sink

First Floor

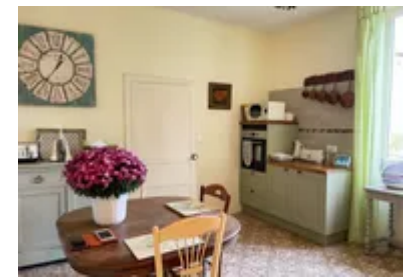
- Bedroom 2 with double bed and ensuite bathroom with WC, bath tub/shower and sink
- Bedroom 3 with double bed and ensuite shower room with WC, shower and sink
- Laundry room with washing machine and dryer
- Bedroom 4 with double bed and ensuite shower room with WC, shower and sink

Outside Grounds

- Swimming pool (8x3.5m)
- Poolside decking, sun loungers and summer kitchen
- Shaded dining terrace with barbecue
- Further terrace overlooking the pool
- Rear garden leading out to open fields
- Front garden with seating area
- Laundry area with washing machine and dryer
- Private parking

Other Facilities

- Air-conditioning (downstairs only)



Location & Local Information

La Jolie Vue is located in a hamlet/small village in the Gers countryside, almost half way between the historic towns of Auch (43km) and Agen (49km). This part of the Gascon countryside allows you to experience an authentic slice of south-west Franc – pass rolling fields and summer sunflowers across the landscapes of the Lomagne as you explore this beautiful region.

Only 10 minutes by car lies Saint-Clar, a pretty bastide village known for its arcaded square, home to the Thursday morning market, and traditional charm. Here, you'll find everything you need for day-to-day living, from two bakeries and café-bars to a supermarket, pizzeria and restaurant. Saint-Clar is the capital of white garlic – the bulbs are harvested in late June and then left to dry for several weeks. A visit to the Maison de l'ail is a must.

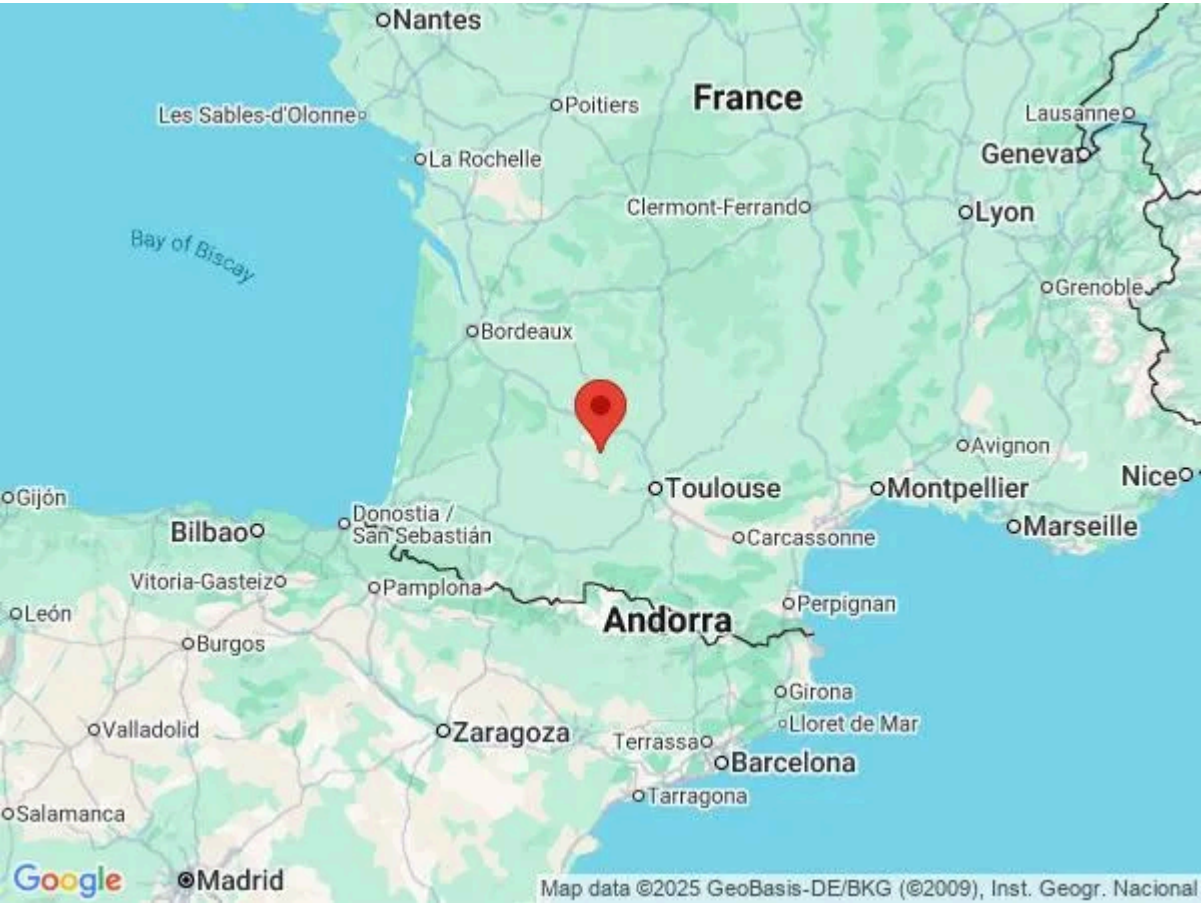
For broader shopping and dining options, the nearby towns of Lectoure, Fleurance and Mauvezin (each within half an hour) offer traditinoal weekly markets, shops and seasonal cultural events. Lectoure in particular is renowned for its antique shops and thermal spa, while Fleurance boasts a vibrant summer night market and Mauvezin is rich in medieval character.

Culture lovers will find plenty to admire in the area. The city of Auch, the historic capital of Gascony, lies just 45 minutes away, where you can explore its monumental cathedral, browse art exhibitions and enjoy lively festivals throughout the year. Head north to the Lot-et-Garonne and discover Agen, famed for its prunes and canal bridge, or visit the abbey town of Moissac to marvel at its Romanesque cloister and riverside walks.

Whether you're exploring the scenic backroads of Lomagne, dining al fresco on a village square or simply enjoying the surrounding countryside, this area offers a quintessentially French escape.

Local Amenities

Nearest Airport	Toulouse-Blagnac Airport (58km)
Nearest City	Toulouse (68km)
Nearest Golf	Golf de Fleurance (23km)
Nearest Restaurant	Saint-Clar (7km)
Nearest Shop	Saint-Clar (7km)
Nearest Supermarket	Intermarché Contact (8km)
Nearest Town	Fleurance (19km)



Nearest Train Station	Gare de Valence d'Agen (32km)
Nearest Village	Saint-Clar (7km)

What we love

- Air conditioning is only featured downstairs (including the ground floor bedroom).
- The house is set in a small village/hamlet, however a car is essential to be able to reach local restaurants, shops and other useful amenities.

What you should know...

- Gaze out over rolling farmland from the poolside sun deck – the views here are pure Gers magic
- Four elegant double bedrooms, each with its own ensuite, ensure comfort and privacy for families or groups.
- Relax in style across two cosy sitting rooms and a charming farmhouse kitchen with a traditional fireplace.
- Just a short drive to the pretty village of Saint-Clar and its Thursday morning market – white garlic is the local speciality
- Discover the authentic charm of Lectoure, Fleurance and Auch – all brimming with history and regional flavour

Terms & Conditions

- **Security deposit:** €1000 charged to client's credit card by Oliver's Travels as a pre-authorisation at least 2 weeks prior to arrival and refunded two weeks after departure, subject to full inspection.
- **Arrival time:** 4.00 p.m.
- **Departure time:** 10.00 a.m.
- **Energy costs included?:** Yes.
- **Linen & towels included?:** Yes.
- **Pets welcome?:** Not allowed.
- **Other Ts and Cs:** Air conditioning is only featured downstairs (including the ground floor bedroom). Weddings, stag/hen parties and any special events are not allowed.
- **Changeover day:** Saturdays. All other days on request.
- **Smoking Allowed?:** Outside only.
- **Minimum stay:** 7 nights. All other durations on request.
- **Heating costs included?:** Yes.
- **Tax:** French Visitors Tax payable to Oliver's Travels at the time of balance payment.
- **Internet access?:** Yes.