

Maison Corbiere

Region: Aquitaine **Sleeps:** 6

Overview

Set in a leafy neighbourhood in Libourne, Maison Corbière offers a refined yet authentic taste of French living. This beautifully renovated townhouse pairs contemporary comfort with restful interiors, creating a stylish base for those looking to immerse themselves in the culture, cuisine and celebrated vineyards of southwest France.

Inside, the home unfolds with an open-plan living and dining area designed for easy, sociable living with a Sonos music speaker and Wi-Fi. The open-plan contemporary kitchen is sleek and fully equipped, complete with a central island for relaxed breakfasts or evening aperitifs.

Upstairs, you will find three attractive double bedrooms. Each is thoughtfully styled with simple yet elegant furnishings bringing warmth to every corner. The master bedroom boasts an impressive en suite, complemented by a shared family bathroom.

Maison Corbière enjoys an enviable location just over 2km from the heart of Libourne, a lively town by the banks of the Dordogne. It's colourful market is considered one of the best in Gironde and takes place on a Tuesday, Friday and Sunday morning. Meanwhile, make the most of high-end dining in gastronomic restaurants and hop aboard leisurely cruises along the Dordogne.

Just 8km away lies the UNESCO-listed village of Saint-Émilion, world-renowned for its historic charm and celebrated wines. Spend the day touring châteaux, tasting Grand Crus, or lingering over a long lunch in the shade of medieval ruins.

Bordeaux is also within easy reach by car or train, while the beaches of Arcachon or the Médoc peninsula make the perfect day out. Whether savouring the rhythm of French town life or exploring the finest wines of the region, Maison Corbière is a fine base for discovering this captivating corner of southwestern France.

Facilities

Wine Tasting • Pure France • Historical Sites • Walking/Hiking Paths • Has Discount • Special Offer • <1hr to Airport • Cottage • Wi-Fi/Internet • On-Street Parking • Washing Machine • Outstanding Landscapes • Outdoor Pursuit & Activities • Tourist Towns & Villages • Tumble Dryer • Dishwasher • Microwave • Heating



Interior & Grounds

Townhouse Interiors

- Open-plan living and dining area with sofas, dining table, Wi-Fi and Sonos sound system
- Open kitchen, well-equipped including fridge freezer, dishwasher, oven and hob, microwave and central island with stools
- Utility room with washing machine and dryer
- Separate WC

First Floor

- Bedroom with double bed and en suite shower room with shower, sink and WC
- Bedroom 2 with double bed
- Bedroom 3 with double bed
- Shower room with shower and sink
- Separate WC

Outside Grounds

- Front garden with table and chairs
- On-street parking (in front of the property)



Location & Local Information

Set in a leafy residential neighbourhood on the edge of Libourne, this elegant townhouse places guests at the heart of one of France's most celebrated wine regions. Just 8km from Saint-Émilion and a 40-minute drive from Bordeaux, this location offers the perfect balance for accessing vibrant towns, cultural landmarks, world-famous vineyards and beautiful countryside.

Libourne itself is a thriving fortified town set along the Dordogne River. The heart of Libourne is just over 2km on foot and there is a shuttle bus that takes you to the town centre (the timetable will be in the house - it usually operates Monday to Saturday daytime). Stroll through its historic square, browse the many shops and enjoy a leisurely lunch near the river. The town's market on Place Abel Surchamp is considered one of the best in Gironde and takes place on a Tuesday, Friday and Sunday morning.

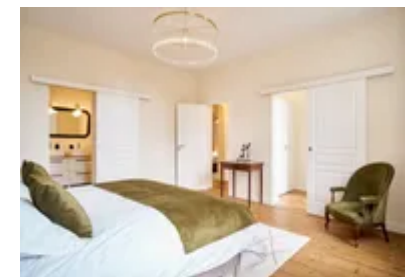
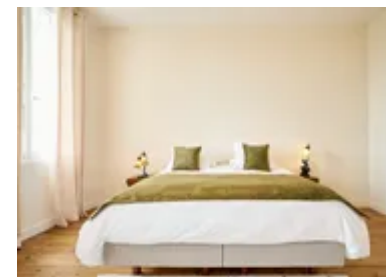
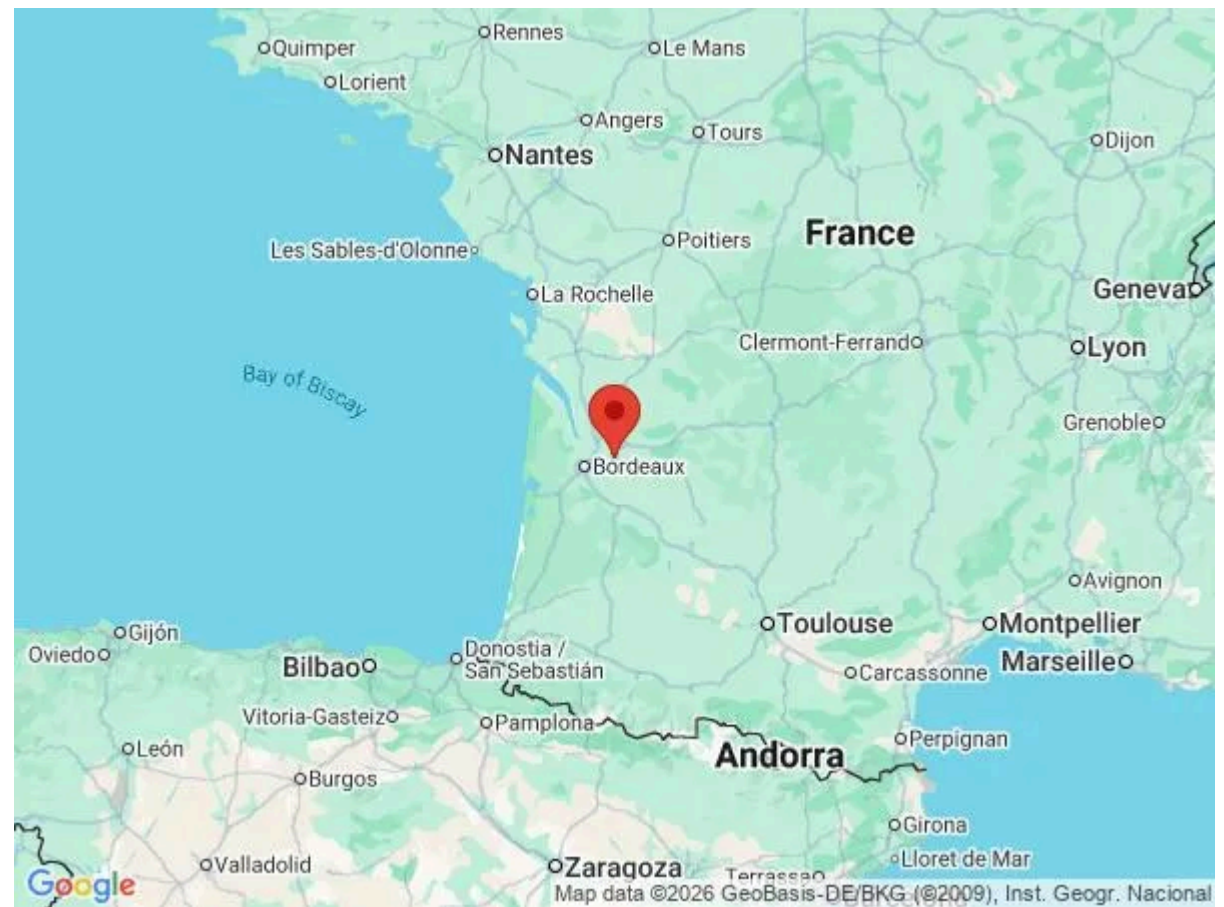
Wine enthusiasts will be in heaven with world-renowned appellations like Pomerol and Saint-Émilion just moments away. Indeed, the enchanting hilltop village of Saint-Émilion (8km) is a must-visit for any traveller to the region. A UNESCO World Heritage site, its medieval centre is a maze of cobbled streets, limestone buildings and hidden courtyards, where centuries of history come alive. Delve into the town's fascinating past with a guided tour of the catacombs and the extraordinary monolithic church, carved directly into the rock beneath the village. Food lovers will be spoilt for choice with elegant restaurants and cosy bistros offering local delicacies and exceptional wine pairings. All around, the landscape is blanketed with some of the most prestigious vineyards in Bordeaux, many of which welcome visitors for tastings and cellar tours amidst panoramic views of the rolling countryside.

In every direction, picturesque vineyards await, inviting guests to sample Bordeaux's finest vintages amidst scenic landscapes. For a deeper dive into rural French life, visit nearby villages across the Gironde and Dordogne such as Saint-Martin-du-Bois (16km) and Gensac (32km) or head to the market town of Sainte-Foy-la-Grande (40km) on a Saturday morning for one of the region's most beautiful markets.

Day trips further afield reveal even more treasures. Bordeaux (40km), a UNESCO World Heritage city, is a must-see with its classical architecture, elegant riverfront and dynamic gastronomic scene. The train from Libourne to Bordeaux takes around 40 minutes if you prefer not to drive.

Meanwhile, the Atlantic coast beckons for a seaside escape from Arcachon's sweeping sandy beaches to the serene lakes and surfing beaches of the Médoc peninsula (Lacanau and Hourtin) just 60 to 90 minutes away.

Whether you're sipping wine under ancient vines, meandering through historic market towns or soaking up the sun along the Atlantic, this Libourne townhouse offers an authentic taste of French joie de vivre.



Nearest Airport	Bordeaux Airport (45km)
Nearest Airport 2	Bergerac Dordogne Périgord Airport (65km)
Nearest City	Bordeaux (40km)
Nearest Golf	Golf de Bordeaux-Cameyrac (17km)
Nearest Restaurant	Libourne (Within 2km)
Nearest Supermarket	Libourne (1.5km)
Nearest Town	Libourne (2km)
Nearest Train Station	Libourne (3km)

What we love

- Set in a leafy Libourne neighbourhood, blending modern style with classic French charm
- Open-plan living with a sleek kitchen and Sonos sound system – perfect for relaxed gatherings
- Experience authentic French life in Libourne, enjoy cruises along the Dordogne, dine in gastronomic restaurants and stock up at the wonderful market, considered one of the best in Gironde
- Discover world-famous vineyards and medieval beauty in Saint-Émilion, only 8km away
- As well as endless wine châteaux and prestigious vineyards, spend the day visiting Bordeaux or the beaches of the Atlantic coast

What you should know...

- Just over 2km from central Libourne, there is a shuttle bus (timetable available in the house) to the historic centre, usually running Mondays to Saturdays during the daytime.
- We still recommend hiring a car to be able to fully explore the region (on-street parking is in front of the house).

Terms & Conditions

- **Security deposit:** €750 charged to client's credit card by Oliver's Travels as a pre-authorisation at least 2 weeks prior to arrival and refunded two weeks after departure, subject to full inspection.
- **Arrival time:** 4.00 p.m.
- **Departure time:** 10.00 a.m.
- **Energy costs included?:** Yes.
- **Linen & towels included?:** Yes.
- **Pets welcome?:** Not allowed.
- **Other Ts and Cs:** Weddings, stag/hen parties and any special events are not allowed.
- **Changeover day:** Saturday.
- **Smoking Allowed?:** Not allowed.
- **Minimum stay:** 3 nights.
- **Heating costs included?:** Yes.
- **Tax:** French Visitors Tax payable to Oliver's Travels at the time of balance payment.