

Villa Sorelh

Region: Languedoc **Sleeps:** 8

Overview

Located by the edge of the charming canal-side hamlet of Le Somail, Villa Sorelh is a contemporary holiday home that captures the laid-back ambience of life in the Languedoc. Behind its modern façade lies a spacious, single-level villa designed for effortless summer living, where mornings begin with fresh pastries from the floating grocery store and afternoons drift into long hours by the private swimming pool.

The villa's interiors are cool and inviting, fully air-conditioned and thoughtfully arranged across an open-plan kitchen, dining and living area. The soaring ceiling and abundant natural light create a sense of calm, while seamless access to the terrace invites relaxed indoor-outdoor living. Four double bedrooms, each with its own en-suite bathroom, provide comfort and privacy in equal measure, ideal for families or groups of friends.

Outside, the expansive terrace offers ample space for lounging and dining. The swimming pool is framed by sun loungers and a barbecue promises lingering summer meals under the stars. A conservatory area with additional seating and dining space adds to the villa's versatility, perfect for leisurely breakfasts or retreating with a good book.

The postcard-perfect hamlet of Le Somail offers a rare blend of character and convenience. Its history as a 17th-century mooring point on the Canal du Midi is still palpable in the cobbled paths and slow-gliding boats. A handful of inviting restaurants and cafés sit await just moments away, making it easy to enjoy the local lifestyle without getting in the car.

The wider region is rich with day-trip possibilities. Spend the day at Narbonne Plage, just 35 minutes away, where safe, sandy beaches and waterfront cafés await. Explore the medieval magic of Carcassonne's UNESCO-listed citadel, or soak up the atmosphere in Narbonne's bustling market hall.

For those seeking a bright and modern escape, Villa Sorelh offers a harmonious blend of style, comfort and location as well as an invitation to relax, explore and reconnect close to one of the world's most celebrated canals.

Facilities

Walk to Village • Pure France • Villa • Boat Trips • Cycling • Tennis Nearby • Historical Sites • Horse Riding • Walking/Hiking Paths • Ideal for Kids • Golf Nearby • Air-Con • Private Pool • Wine Tasting • Ideal for Teens • Beach Nearby • All Bedrooms En-Suite • Ground Floor Bed & Bath • <1hr to Airport • Parking Space • Walk to Restaurant • Wi-Fi/Internet • BBQ • Washing Machine • Outstanding Landscapes • Outdoor Pursuit &



Interior & Grounds

Villa Interiors

- Living-dining room with TV, Wi-Fi internet and door to terrace
- Kitchen with breakfast table and chairs, well-equipped including oven and hob, microwave, American-style fridge freezer and dishwasher
- Utility room with washing machine
- Separate WC
- Conservatory overlooking swimming pool with dining table and seating area
- Bedroom 1 with double bed, garden access and ensuite WC, bath/shower and sink
- Bedroom 2 with double bed, terrace access and ensuite WC, shower and sink
- Bedroom 3 with double bed, terrace access and ensuite WC, shower and sink
- Bedroom 4 with double bed and ensuite WC, shower and sink

Outside Grounds (some steps)

- Swimming pool (8x5m)
- Sun terrace and loungers
- Barbecue
- Garden area
- Private off-road parking



Location & Local Information

Located just near the edge of the charming hamlet of Le Somail, Villa Sorelh is a very short walk from welcoming cafés, restaurants and the wonderful Canal du Midi.

Once a 17th-century mooring stop for barges travelling between Toulouse and the Mediterranean, Le Somail now delights visitors with its timeless character. Shaded paths, arched stone bridges and a relaxed southern French ambience define this enchanting village/hamlet. Enjoy alfresco meals by the canal, linger over coffee at a café terrace or visit the unique floating épicerie offering fresh bread and croissants each morning. For added convenience, a large supermarket can be found around 2km away in Saint-Marcel-sur-Aude.

The surrounding area is rich in leisurely pursuits. Stroll or cycle along the canal's leafy towpaths or embark on a gentle cruise. A short 17km drive brings you to Homps and the serene Lac de Jouarres, ideal for summer swims and waterside dining. Olonzac, 16km away, hosts a vibrant Tuesday market brimming with local produce and regional flair.

One of the area's true gems is Minerve, a dramatic hilltop village just 19km away. Once a Cathar stronghold, it's now classified among the most beautiful villages in France. Oenophiles will find themselves at home with numerous nearby wine domaines offering tastings of local reds and rosés.

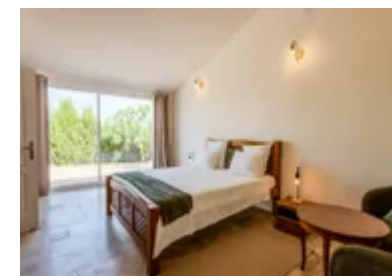
Culture and history abound in Narbonne (14km), where Roman remnants, canal-side walks and the bustling Les Halles market offer a taste of historic city life. A bit further on, Béziers (35km) draws visitors with its grand architecture and festival energy, while the sandy beaches of Narbonne Plage, only 32km away, promise a classic Mediterranean day out.

From historic villages and beautiful vineyards to canal-side adventures, Le Somail is a wonderfully atmospheric base for exploring the Languedoc at its best.



Local Amenities

Nearest Airport	Carcassonne (54 km)
Nearest Beach	Narbonne Plage (31 km)
Nearest City	Carcassonne (54 km)
Nearest Golf	Golf Pitch and Putt de Narbonne (16 km)
Nearest Restaurant	Le Somail (1 km)



Nearest Supermarket	Saint-Marcel-sur-Aude (1.5 km)
Nearest Town/City	Narbonne (16 km)
Nearest Village	Le Somail (0 km)

What we love

- Set in the pretty hamlet of Le Somail, a very short stroll from the Canal du Midi and its charming floating grocery store
- Bright, single-level layout with an open-plan living space and air-conditioning throughout
- After a morning cycling along the Canal du Midi, cool off in your private swimming pool
- Each of the four double bedrooms boasts an en-suite bathroom, offering comfort and privacy for families or friends
- A short stroll to a handful of restaurants and cafés – no car needed to enjoy the village's canal-side charm
- Day trips abound, from the sandy shores of Narbonne Plage to the fairytale citadel of Carcassonne

What you should know...

- Despite the fantastic location right on the edge of the charming hamlet of Le Somail, a car is needed to be able to fully explore the region and stock up on groceries (bike hire if of course also highly recommended!).

Terms & Conditions

- **Security deposit:** €1000 charged to client's credit card by Oliver's Travels as a pre-authorisation at least 2 weeks prior to arrival and refunded two weeks after departure, subject to full inspection.
- **Arrival time:** 4.00 p.m.
- **Departure time:** 10.00 a.m.
- **Energy costs included?:** Yes.
- **Linen & towels included?:** Yes.
- **Pets welcome?:** No.
- **Other Ts and Cs:** Weddings, stag/hen parties and any special events are not allowed.
- **Changeover day:** Flexible.
- **End of stay cleaning available?:** Yes.
- **Smoking Allowed?:** Outside only.
- **Minimum stay:** 7 nights. All other durations on request.
- **Heating costs included?:** Yes.
- **Tax:** French Visitors Tax payable to Oliver's Travels at the time of balance payment.
- **Internet access?:** Yes.