

Domaine Riplou

Region: Languedoc **Sleeps:** 8

Overview

Domaine Riplou offers a refined yet relaxed retreat where traditional French charm meets contemporary comfort. This beautifully restored country home sits in a large private garden with a gorgeous swimming pool. From the moment you arrive, there's a sense of wonderful space, where days unfold slowly.

Inside, the house exudes warmth and character across three levels. Original features have been carefully preserved, while modern touches have been thoughtfully integrated. The ground floor flows from a well-equipped kitchen into a welcoming dining area and a bright, comfortable living room that opens directly onto the garden.

There are four bedrooms and a family bathroom on the first floor, sleeping up to 8 guests, plus an additional shower room downstairs. Bedrooms are prettily decorated, simple yet stylish, with lovely furnishings and delightful décor. On the top floor, a quad children's bedroom with two sets of bunk-beds provides additional space.

Step outside, and you'll find your own private pool, a large rear terrace for al-fresco dining and a front patio perfect for a quiet morning coffee. With a plancha and barbecue, long summer lunches stretch effortlessly into evening.

Domaine Riplou enjoys a superb location for those wishing to explore the charms of southern France. Just 40 minutes from the medieval splendour of Carcassonne, the house is also close to the historic market town of Revel, the Canal du Midi and the Lac du Lampy's lakeside restaurant.

Nearby villages such as Saissac and Bram offer bakeries, butchers and cafés, while Castelnaudary provides all essential amenities (make sure you try the town's famous cassoulet). Wine lovers are perfectly placed for tastings across the wider region, and outdoor enthusiasts will relish the area's hiking, cycling and boating opportunities.

For those seeking a rural escape with space to gather, unwind and explore, Domaine Riplou invites you to settle into the rhythm of country life.

Facilities

Golf Nearby • Pure France • Villa • Boat Trips • Cycling • Tennis Nearby • Canoeing/Kayaking • Horse Riding • Walking/Hiking Paths • Ideal for Kids • Wine Tasting • Private Pool • Heated Pool • Ideal for Teens • <1hr to Airport • Parking Space • Wi-Fi/Internet • BBQ • Washing Machine • Outstanding Landscapes • Outdoor Pursuit & Activities • Tourist Towns &



Interior & Grounds

House Interiors

- Entrance hallway
- Living room with sofa and chairs, TV, Wi-Fi and French TV. Doors open to terrace
- Open-plan dining area with table and chairs
- Open-plan kitchen with oven and hob, microwave, fridge freezer and dishwasher
- Utility room with washing machine and dryer
- WC and sink
- Shower room with shower and sink

First Floor

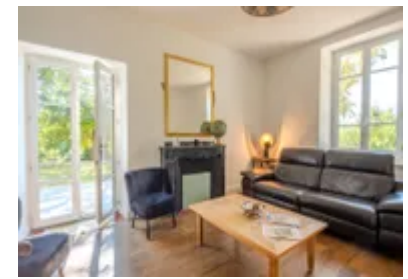
- Bedroom 1 with double bed
- Bedroom 2 with three single beds
- Separate bathroom with WC, bath and sink
- Bedroom 3 with double bed
- Bedroom 4 with double bed

Second Floor

- Bedroom 5 with two sets of bunk beds (for 4 children)

Outside Grounds

- Heated swimming pool (8x4m) with shallow entry shelf
- Poolside terrace with sun loungers and chairs
- Dining terrace with barbecue and plancha
- Front terrace with bistro table and chairs
- Large garden (not overlooked)
- Parking



Location & Local Information

In the rolling hills of southern France, Domaine Riplou enjoys a countryside setting just outside the charming village of Verdun-en-Lauragais. Surrounded by fields, forest, working farmland and distant Pyrenean views, the property offers guests a rural escape within reach of picturesque villages and historic towns, only 8km from Saissac on the edge of the Montagne Noir. There is a farm with animals adjacent to the house.

Saissac provides all the essentials for daily living, including a bakery, butcher, fishmonger and small grocers – ideal for gathering fresh local produce to enjoy back at the house. For a relaxed meal out, head to Lac du Lampy (14km) where a lakeside restaurant offers tranquil views and regional cuisine.

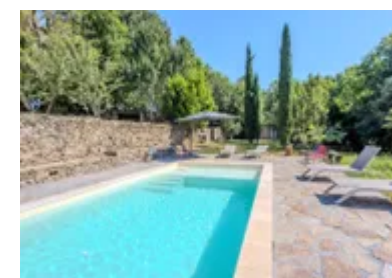
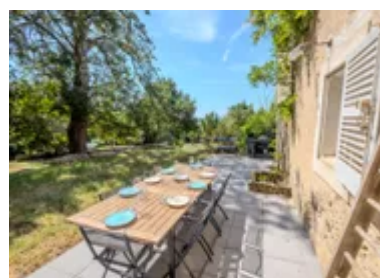
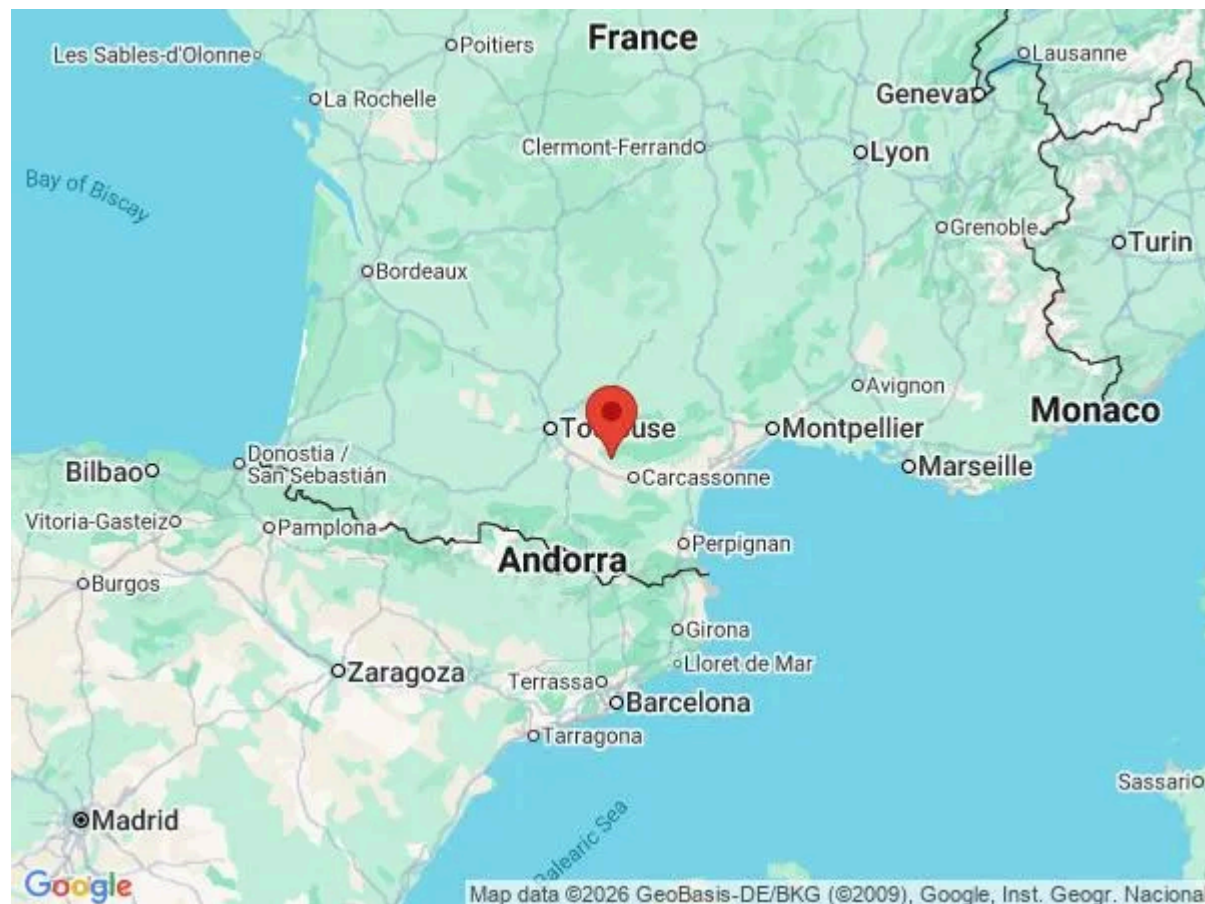
Heading south, further amenities await in both Bram (16.5km) and Castelnaudary (17.5km), with supermarkets, cafés, traditional restaurants and local markets adding to the convenience and charm of the area (Castelnaudary is known as the birthplace of its cassoulet). Meanwhile, the Canal du Midi invites guests to hire boats or explore its scenic towpaths by bike or on foot – an idyllic way to discover this UNESCO World Heritage Site.

Carcassonne (35km), with its awe-inspiring medieval citadel, offers a full day's exploration of cobbled streets, ramparts and cultural events, as well as a range of dining options and an international airport for easy access.

On Saturdays, the bustling morning market in Revel (20km) is a highlight, where stalls brim with regional produce, artisanal goods and lively atmosphere. Not far from Revel, the Bassin de Saint-Ferréol (16.5km), a vast reservoir and UNESCO site, offers waterside walks, summer swimming and shaded picnicking beneath pines – the perfect balance of culture, nature and rural French charm.

Local Amenities

Nearest Airport	Carcassonne Airport (34km)
Nearest Airport 2	Toulouse-Blagnac Airport (85km)
Nearest City	Carcassonne (35km)
Nearest Golf	Golf de Carcassonne (37km)
Nearest Restaurant	Lac Lampy (14km)
Nearest Shop	Small grocery shop and bakery in Saissac (8km)
Nearest Supermarket	E.Leclerc Castelnaudary (17km)



Nearest Town	Bram (16.5km)
Nearest Train Station	Gare de Bram (17km)
Nearest Village	Saissac (8km)

What we love

- A beautifully restored French country home with original charm and pretty décor
- Enjoy the spacious garden, private pool and lovely terraces for relaxed outdoor living
- Discover nearby villages, local restaurants and the historic town of Revel, famous for its Saturday morning market
- Close to the scenic Canal du Midi and just 40 minutes from Carcassonne

What you should know...

- Set in open countryside near working farmland, the house is adjacent to a farm (with animals).

Terms & Conditions

- **Security deposit:** €1000 charged to client's credit card by Oliver's Travels as a pre-authorisation at least 2 weeks prior to arrival and refunded two weeks after departure, subject to full inspection.
- **Arrival time:** 4.00 p.m.
- **Departure time:** 10.00 a.m.
- **Energy costs included?:** Yes.
- **Linen & towels included?:** Yes.
- **Pets welcome?:** No.
- **Other Ts and Cs:** Weddings, stag/hen parties and any special events are not allowed.
- **Changeover day:** Flexible.
- **Smoking Allowed?:** Outside only.
- **Minimum stay:** 3 nights. All other durations on request.
- **Heating costs included?:** Yes.
- **Tax:** French Visitors Tax payable to Oliver's Travels at the time of balance payment.
- **Internet access?:** Yes.