

Apartement Farapreu

Region: Rhone-Alpes Sleeps: 9

Overview

A short drive from La Clusaz in the Aravis mountains, Apartment Farapreu offers a charming alpine retreat just moments from the piste. With space for up to 9 guests across two levels, this recently renovated apartment blends modern comfort with homely warmth, perfect for both winter adventures and summer escapes.

Inside, the first-floor living-dining area is an inviting space to gather for meals after a day on the slopes. A high ceiling and generous windows bring the mountain scenery indoors, while the adjoining American-style kitchen makes for easy entertaining. Sink into cosy leather armchairs or enjoy a hearty meal around the large dining table as dusk settles over the valley. Step outside to the wraparound balcony and take in panoramic views of the village and valley.

On the same floor, you will find two well-appointed bedrooms and two shower rooms as well as practical touches like a laundry corner and ski boot cupboard ensuring every need is met. There is separate storage for skis in the basement.

Upstairs, a snug mezzanine TV lounge with a fireplace and library corner creates the perfect hideaway for quiet evenings. A further three sleeping areas, including a double and single bedroom alongside a bunk-bed tucked along the hallway, offer flexibility for families or groups. A family bathroom and separate WC add to the convenience and complete this upper floor.

Positioned only 1.5km from Télésiège du Crêt Du Merle, Apartment Farapreu offers ski-in access for experienced wintersport enthusiasts. In summer, mountain trails, cheese-making farms and paragliding adventures await, while Lake Annecy, just a 30-minute drive away, invites days of sailing, cycling and lakeside discovery.

Whether you're sipping hot chocolate by the fire or picnicking in alpine meadows, this welcoming mountain base ensures an unforgettable stay in every season. For those seeking both convenience and character in La Clusaz, Apartment Farapreu delivers the best of both worlds.

Facilities

Cycling • Ski Lift Nearby • Walk To Slopes • Self-Catered • Skiing • Tennis Nearby • Horse Riding • Exclusive • Walking/Hiking Paths • Golf Nearby • Recommended • Special Offer • Has Discount • Townhouse/Apartment • Parking Space • Wi-Fi/Internet • Lakes and Mountains • Washing Machine • Outstanding Landscapes • Hairdryer • Outdoor Pursuit & Activities • Tourist Towns & Villages • TV • Tumble Dryer • Dishwasher • Working Fireplace/Woodburner • Heating



Interior & Grounds

Apartment Interiors

First Floor

- Living-dining room with high ceiling, armchairs, dining table and two sets of French doors opening to balcony
- Open-plan kitchen, fully equipped including American bar, dishwasher, two raclette machines and two fondue cookpots
- Bedroom with double bed
- Bedroom with two single beds
- 2 x shower rooms
- Separate WC
- Laundry corner with washing machine
- Storage cupboard (for ski boots)

Mezzanine Floor (via steep staircase, sloping ceilings)

- Mezzanine TV lounge with sofas, library corner and fireplace
- Bedroom with double bed
- Bedroom with single bed
- Hallway with bunk-bed
- Family bathroom with bath and sink
- Separate WC

Other Facilities

- Ski locker available (in basement)
- One parking spaces in residence's car park



Location & Local Information

In the heart of the French Alps, La Clusaz is a year-round haven that marries alpine charm with exhilarating adventure. Apartment Farapreu is located in an attractive area with chalets only 2km from the centre of La Clusaz and 1.5km from Télésiège du Crêt Du Merle. There are two bus stops nearby (one just opposite the road, another at the bottom of the road) for your convenience.

In winter, La Clusaz region transforms into a snowy playground (snow tyres and chains or a 4x4 will be required for snowy conditions). From downhill and Nordic skiing to the thrill of speed-skiing and rando skiing, the wider region caters to all levels of ability and ambition. Families can enjoy sledging or try horse and dog sledding for a memorable mountain experience. Off the pistes, the village offers seasonal ice skating, heated swimming pools, a cinema, bowling alleys and an après-ski scene complete with bars, clubs and an indulgent array of cheese-laden French cuisine. Yoga and Pilates classes also offer a chance to unwind and recharge.

When the snow melts, La Clusaz reveals its verdant side, inviting visitors to explore countless hiking trails and panoramic viewpoints. The summer lifts remain open during certain dates, whisking you to mountaintops ideal for trekking and photography. Explore traditional cheese-making farms, enjoy mini golf or tee off at the scenic Les Confins golf course. For thrill-seekers, there's paragliding, horse riding, white-water activities and treetop adventure parks across the region. Families will love the vibrant calendar of children's events and music festivals held throughout the warmer months.

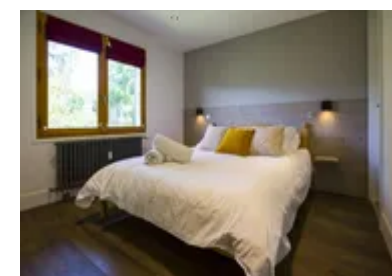
Just 30 minutes away, the crystal-clear waters of Lake Annecy await. Here you can indulge in water sports, cycle around the picturesque shoreline or explore the enchanting medieval town of Annecy (33km) itself, known for its canals, markets, lakeside promenade and historic architecture.

Whether you come for the powdery slopes or sun-dappled trails, La Clusaz promises an unforgettable alpine escape filled with beauty, adventure and French flair.



Local Amenities

Nearest Airport	Geneva Airport (75km)
Nearest Airport 2	Chambéry Airport (92km)
Nearest Golf	Golf Des Confins (9km)
Nearest Restaurant	La Clusaz (2km)
Nearest Shop	U Express (2km)



Nearest Ski Lift	Télesiège du Crêt Du Merle (1.5km)
Nearest Tennis	Tennis de La Clusaz (2.5km)
Nearest Town	Annecy (42km)
Nearest Village	La Clusaz (2km)

What we love

- Enjoy glorious village and valley views from the wraparound balcony whilst the cosy mezzanine lounge with fireplace and books is perfect for relaxed evenings
- Flexible sleeping arrangements across two levels makes this apartment ideal for families or groups
- A great setting only 2km from La Clusaz and within walking/skiing distance from the Cret du Merle piste
- Summer adventures also await nearby, from mountain trails to paragliding and Lake Annecy day trips

What you should know...

- This apartment sleeps up to 9 guests (7 guests across three bedrooms and a bunk-bed in the hallway upstairs).
- Please note there are steep stairs leading up to the mezzanine lounge overlooking the living-dining room below (please see the "Layout" for details of the rooms on this floor). Young children will need to be supervised carefully on the stairs and in the lounge by the mezzanine (this apartment is better suited to older children).
- There is one car parking space for the apartment. Additional vehicles will need to be parked along the road leading to the apartment, around 25m away, or in the resort's long-term garages/car parks.
- Please make sure your vehicle is equipped with snow tyres and chains or a 4x4, as these are required in snowy conditions.

Terms & Conditions

- **Security deposit:** £500 charged to client's credit card by Oliver's Travels as a pre-authorisation at least 2 weeks prior to arrival and refunded two weeks after departure, subject to full inspection.
- **Arrival time:** 4.00 p.m.
- **Departure time:** 10.00 a.m.
- **Linen & towels included?:** Yes.
- **Pets welcome?:** Not allowed.
- **Other Ts and Cs:** The house has stairs and a mezzanine that may pose a risk to young children. Children must be supervised at all times. The owner and agency cannot be held responsible for any accidents occurring on the property. Weddings, stag/hen parties and any special events are not allowed.
- **Changeover day:** Saturday in high season. Flexible during other periods.
- **End of stay cleaning available?:** Extra €300 payable to Oliver's Travels with the balance payment. Guests are required to leave the accommodation clean, tidy and in the same condition as on their arrival. Any extra cleaning, laundry, maintenance and/or rubbish disposal required will be charged against the security deposit.
- **Smoking Allowed?:** Outside only.
- **Other 2:** Please make sure your vehicle is equipped with snow tires and chains or a 4x4, as these are required in snowy conditions.
- **Insurance:** Guests are required to be in possession of a valid and comprehensive insurance policy, which covers them for cancellations, loss of personal belongings, personal liability and any accidental damage caused during their stay.
- **Other 3:** Please note that restaurants and other local amenities/facilities in the region may be seasonal. Please contact us if further information is needed.
- **Minimum stay:** 7 nights (short-breaks may be possible on request outside end June-end August).
- **Tax:** Visitors Tax payable to Oliver's Travels at the time of balance payment (typically costs €1-€10 per adult per night - please enquire if exact amount is required).