

Apartment Abeto

Region: Lisbon Sleeps: 2

Overview

Combining architectural clarity with elevated city living, Apartment Abeto offers a refined retreat in the heart of Lisbon, just steps from Avenida da Liberdade. This stylish 125m² mezzanine-style apartment is a celebration of volume, light, and quiet elegance - ideal for design-conscious travellers seeking both space and serenity in the capital.

Inside, the layout flows effortlessly from a soaring open-plan living area to a curated kitchen and dining zone, all framed by high ceilings and tall windows. Classic detailing like ceiling mouldings meet contemporary touches such as sculptural lighting and sleek modern finishes. The upper mezzanine hosts a king-size bed, while a high-quality double sofa bed adds extra flexibility for small groups or families.

Slide open the balcony doors and you'll find a peaceful outdoor perch - perfect for morning coffee or an apéritif above the city streets. Whether you're here for business, culture or leisure, Apartment Abeto offers comfort, autonomy and visual harmony in an exceptional Lisbon address.



Facilities

Historical Sites • Padel • Boat Trips • Go-Karting • Cycling • Tennis Nearby • Canoeing/Kayaking • Watersports • Wine Tasting • Air-Con • Walking/Hiking Paths • Cots (Cribs) • Townhouse/Apartment • <1hr to Airport • Walk to Restaurant • Parking Space • Wi-Fi/Internet • Washing Machine • Coffee Machine • TV • Tumble Dryer • Dishwasher • Microwave • Ideal for Babies & Toddlers • High Chair(s)

Interior & Grounds

Main Level

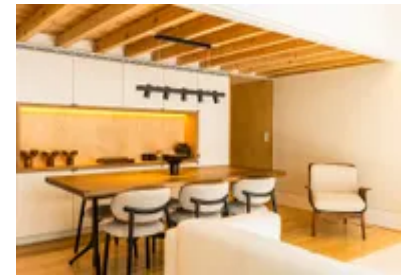
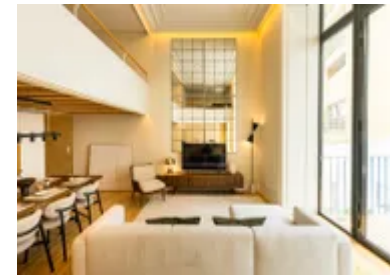
- Spacious open-plan living area with high ceilings, natural light, and stylish furnishings
- Curated dining area adjacent to a fully equipped open-plan kitchen (induction hob, oven, fridge, freezer, microwave, dishwasher, coffee machine, and kettle)
- Living space includes a comfortable sofa bed (sleeps two), TV, and access to a private balcony
- Bathroom with shower
- WC

Mezzanine Level

- Bedroom with king-size bed, overlooking the living space below

Facilities

- Wi-Fi
- Air conditioning
- Floor heating
- Washing machine and dryer
- Lift access
- Open-air parking available nearby

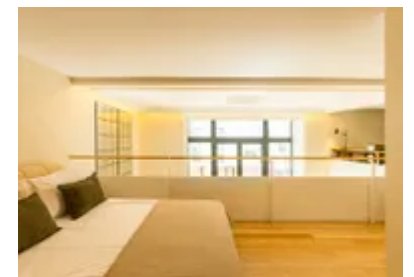
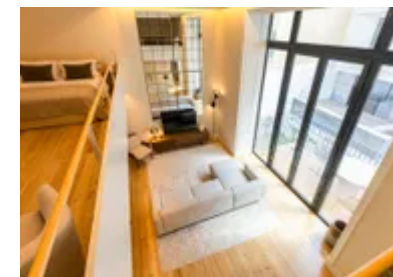
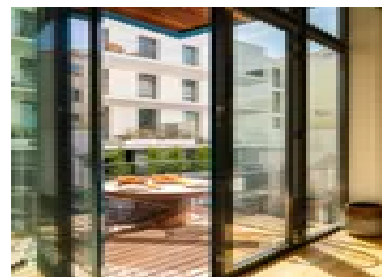
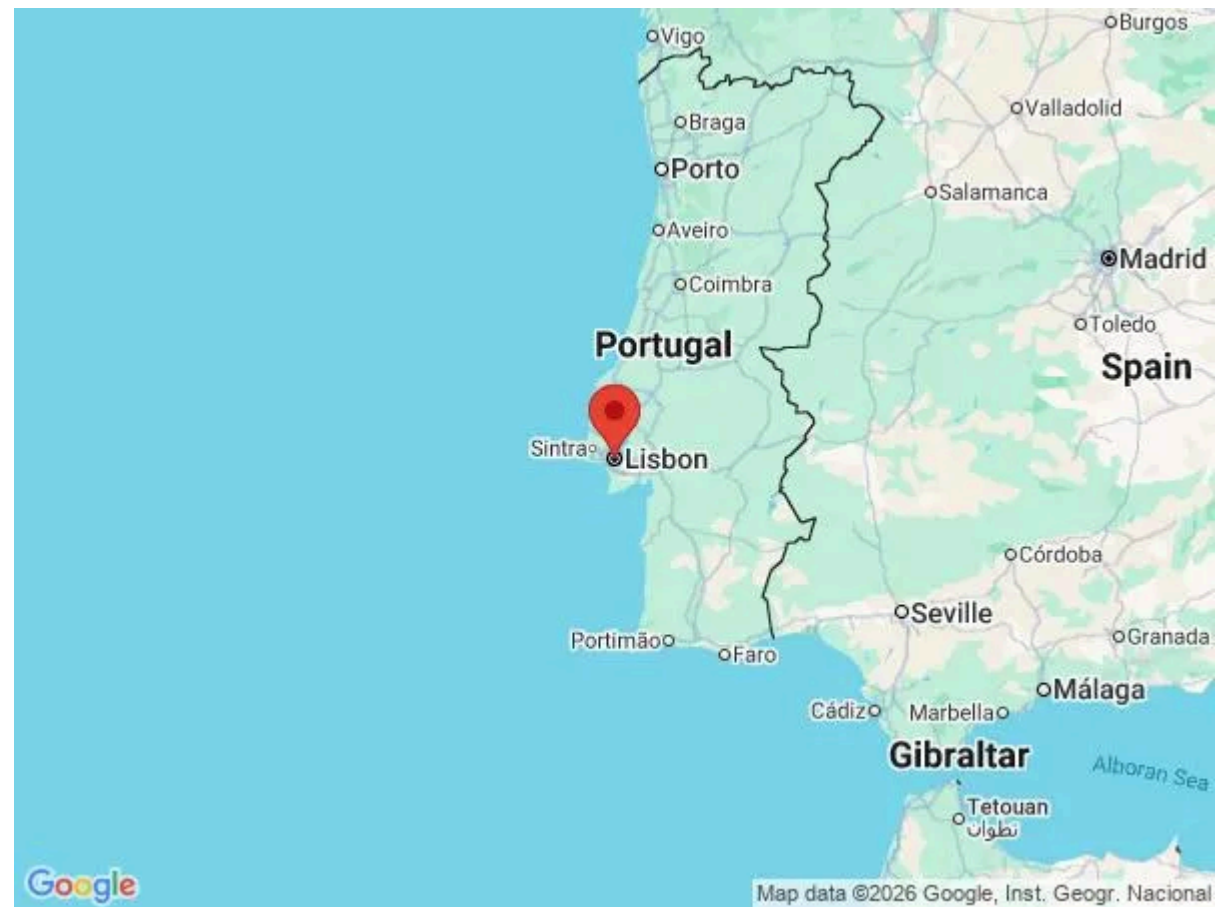


Location & Local Information

Apartment Abeto places you in the cultural and commercial heart of Lisbon, just a short stroll from the tree-lined elegance of Avenida da Liberdade. Known for its designer boutiques, historic theatres and vibrant café culture, this central boulevard is one of the city's most prestigious addresses. From here, you're within easy reach of Lisbon's most characterful neighbourhoods - the Glória funicular nearby connects directly to Bairro Alto and Príncipe Real, where historic charm meets modern energy in a mix of galleries, rooftop bars and local markets. Whether you're walking to a Michelin-starred dinner, browsing independent shops, or catching the sunset over the Tagus, everything is within easy reach. Despite its centrality, the apartment's position on a quiet residential street offers a welcome sense of calm amid the city's buzz.

Local Amenities

Nearest Airport	Lisbon Airport (7km)
Nearest Beach	Algés Beach (13km)
Nearest Golf	Academia de Golfe de Lisboa (5km)
Nearest Restaurant	(120m)
Nearest Supermarket	(210m)
Nearest Tennis	Rackets Pro - Nacional Padel (3km)



What we love

- Smart mezzanine design with soaring ceilings and natural light throughout.
- Prime central location near Avenida da Liberdade, with easy access to Bairro Alto and Príncipe Real.
- Private balcony - a rare bonus in such a central Lisbon apartment.

What you should know...

- The bedroom is located on an open mezzanine level above the living area, without full separation.
- While the sofa bed adds flexibility, the apartment is most comfortable for two guests.
- Please note that this accommodation does not accept groups of young people (Up to 25 years).

Terms & Conditions

- **Security deposit:** €1500 charged to client's credit card by the owner before arrival and refunded two weeks after departure, subject to full inspection.
- **Arrival time:** 4.00 p.m. - 8.00 p.m.
- **Departure time:** 10.00 a.m.
- **Energy costs included?:** Yes, included in the rental price.
- **Linen & towels included?:** Yes, included in the rental price.
- **Pets welcome?:** Not allowed.
- **Other Ts and Cs:** Please note, arrival out of schedule will require an additional fee of €50. Please note that this accommodation does not accept groups of young people (up to 25 years).
- **Changeover day:** Flexible.
- **End of stay cleaning available?:** Extra €500 to be charged to Oliver's Travels with final balance. However, guests are required to leave the accommodation clean, tidy and in the same condition as on their arrival. Any extra cleaning, laundry, maintenance and/or garbage disposal required will be charged against the security deposit.
- **Smoking Allowed?:** Smoking & Vaping are not permitted.
- **Minimum stay:** 7 nights - all other durations on request.
- **Tax:** Please be aware that Tourist Tax mandated by local authorities may apply to your stay and is subject to change; this is an additional fee to be paid locally to the owner. The charge will be €4 per person for a max of 7 nights.
- **Internet access?:** Complimentary Wi-Fi internet access is included in rental price. It is good to note that the speed is dependent on the local provider and technical issues may cause reduced speed or cut of service.
- **Stag & Hen Do Allowed? :** Weddings, stag/hen parties and any special events are not allowed.