

Maison Paysanne

Region: Dordogne Sleeps: 6

Overview

Beyond a country lane in a sleepy hamlet, Maison Paysanne stands as a beautifully restored stone house, where tradition meets contemporary charm in the heart of the Dordogne. Surrounded by rolling hills and woodland, this characterful home offers the simplicity of rural living with thoughtful touches that invite long leisurely days, just a 2km drive from the riverside village of Trémolat.

Light spills into the kitchen through a pretty bay window and French doors, drawing the eye to the south-facing terrace and garden beyond. Indoors, the flow is gentle and inviting, from the impressive new kitchen into a cosy living and dining space. Upstairs, three comfortable bedrooms await for up to 6 guests, including a double with en-suite shower room and a shared modern bathroom, an ideal layout for family or friends.

Outside, the rustic garden offers a patchwork of pretty corners and outdoor living spaces. Dip into your very own swimming pool on warm afternoons, or settle beneath the oak tree with lunch and a chilled bottle of local rosé. A second terrace provides space for relaxed reading or aperitifs, while hammocks beneath the barn's shade offer a restful spot to watch the sun drift over the western hills. With bicycles on hand, the surrounding countryside is yours to explore at your own pace.

Maison Paysanne enjoys a superb setting just 2km from the Dordogne village of Trémolat. Known for its riverside charm and Romanesque church, the village is also home to cafés, watersports and the Michelin-starred Le Vieux Logis. A little further afield, discover the cobbled lanes of Limeuil where two rivers meet, or head to the prehistoric wonders of Les Eyzies and the fairytale villages of Domme and La Roque-Gageac. For market days and medieval atmosphere, Sarlat-la-Canéda offers a grand day out.

Perfectly placed for exploring the heart of the Dordogne, Maison Paysanne is a gentle escape into a slower rhythm of countryside life.

Facilities

Villa • Tennis Nearby • Historical Sites • Canoeing/Kayaking • Horse Riding • Walking/Hiking Paths • Cycling • Private Pool • Wine Tasting • Cots (Cribs) • <1hr to Airport • Pool Safety Feature • Parking Space • Wi-Fi/Internet • Rural Location • Washing Machine • Outstanding Landscapes • Coffee Machine • Hairdryer • Outdoor Pursuit & Activities • Tourist Towns & Villages • TV • Bicycles Provided • Tumble Dryer • Dishwasher • Microwave • Aquarium • Theme park • Forest park/High-rope course • High Chair(s)



Interior & Grounds

House Interiors (150m²)

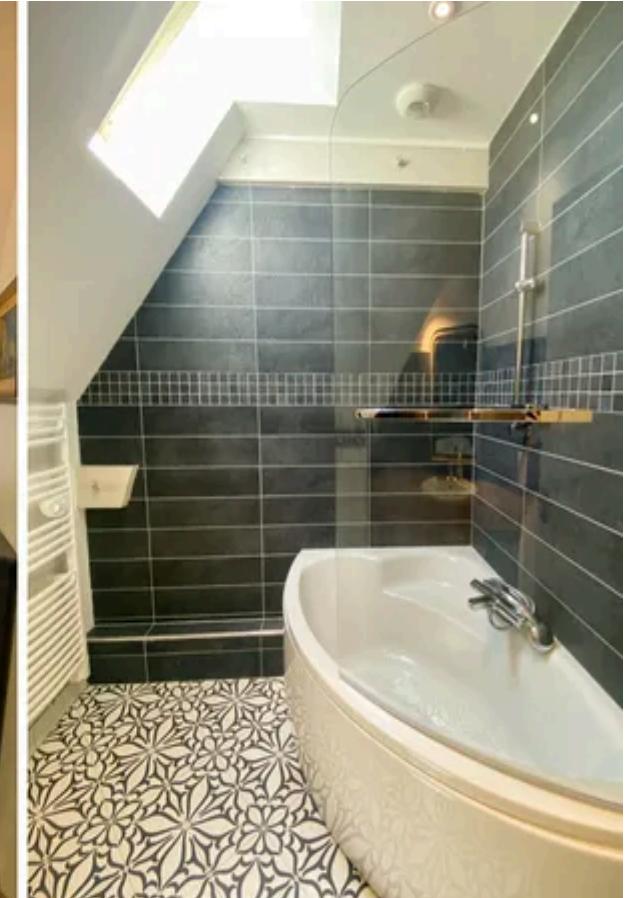
- Open-plan living and dining area (57m²)
- Open-plan kitchen and dining area (30m²), well-equipped including dishwasher, kettle, electric oven, microwave, toaster and filter coffee machine. French doors open to south-facing garden and terrace
- Back kitchen with sink and fridge
- Laundry room with washing machine, dryer and ironing facilities

First Floor (open-tread staircase from lounge)

- Bedroom (16m²) with king-size double bed (180x200cm)
- Bedroom (12m²) with two single beds (can be joined as a double) and en suite shower room
- Bedroom (11m²) with two single beds
- Shared bathroom and separate WC

Outside Grounds (4500m² plot, unenclosed)

- Swimming pool (10x4m, depth: max 1.9m)
- Poolside terrace and loungers
- Al-fresco dining terrace (next to kitchen)
- Oak tree (near barn) for shaded dining
- Second outdoor area with dining table and furnishings (on other side of house)
- Barn with relaxation area, hammocks and views
- Large garden (some steps)
- Bikes
- Parking



Location & Local Information

In the heart of the Dordogne countryside, Maison Paysanne offers a charming escape just moments from the riverside village of Trémolat (2km). Located in a little hamlet, just off a country lane, this rural setting is perfect for those seeking traditional authenticity and lovely views of wooded hills.

The village of Trémolat itself is a delight to explore, with its Romanesque church, a handful of excellent restaurants (including the Michelin starred Le Vieux Logis) and canoe or kayak hire offering a relaxed way to enjoy the Dordogne River. Discover scenic walks and hikes across the area, some with spectacular views over the Dordogne River, particularly the breathtaking Cingle de Trémolat.

A short drive away, Limeuil (6km) awaits, officially one of France's Plus Beaux Villages, where the Vézère and Dordogne rivers meet. Its cobbled streets, beautiful views and river gardens make it a perfect spot for an afternoon stroll or riverside picnic (with summer paddling).

For those with a passion for history and prehistory, Les Eyzies (22km), nestled in the verdant Vézère valley, is the gateway to some of Europe's most significant prehistoric sites. The wider region is dotted with ancient caves, rock shelters and the world-renowned National Prehistory Museum.

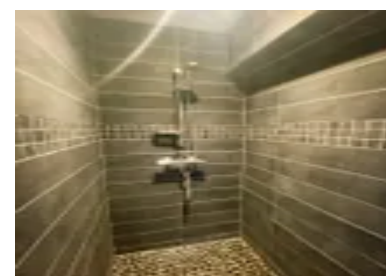
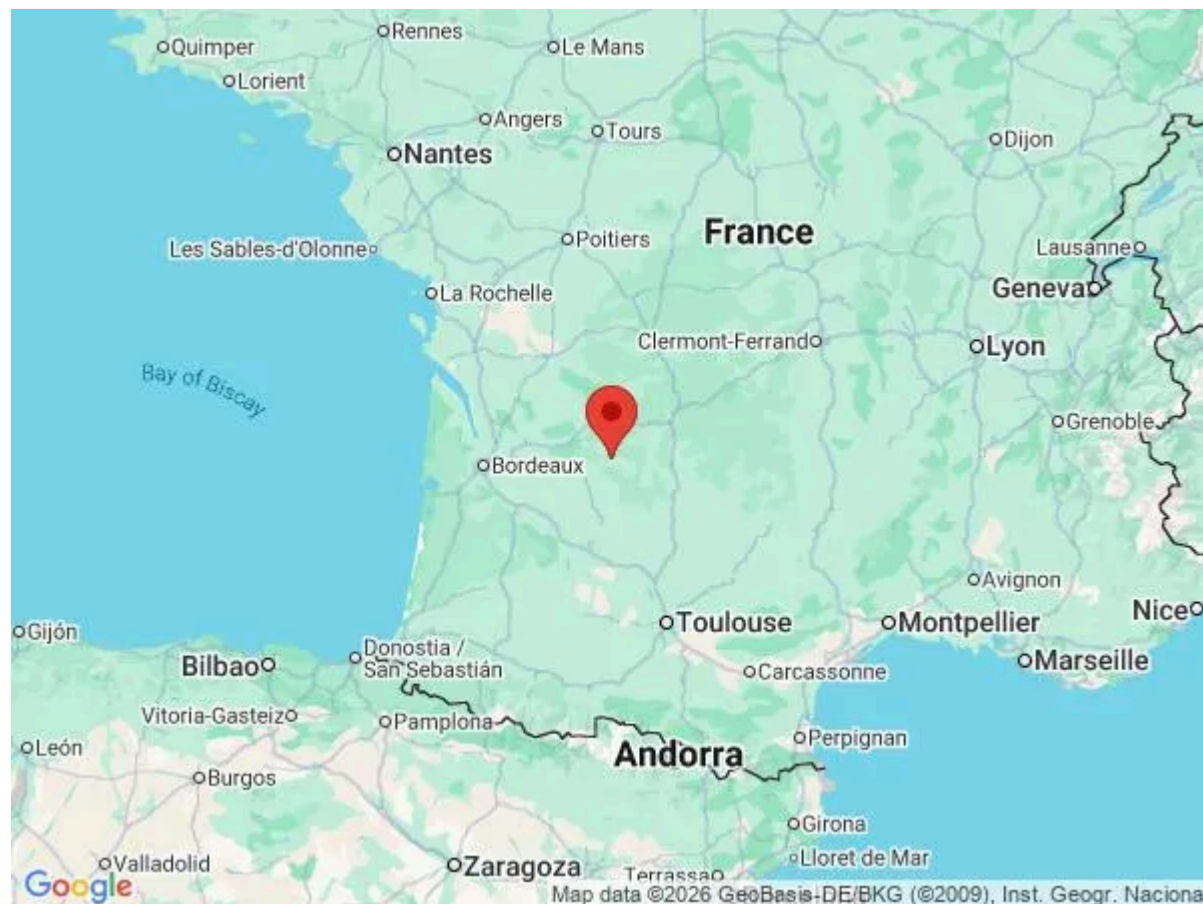
Further along the river, guests can discover a string of iconic Dordogne destinations including the clifftop village of La Roque-Gageac (39km), the bastide beauty of Domme (45km) and the imposing medieval Château de Beynac (37km), perched high above the river.

Maison Paysanne also makes an excellent base for day trips to some of the region's most atmospheric towns. Sarlat-la-Canéda (42km), with its honey-hued buildings and bustling markets, is a treasure trove of medieval charm, while the historic city of Périgueux (44km) impresses with its Gallo-Roman heritage and domed cathedral. Wine lovers may enjoy an outing to Bergerac (39km), home to vineyards, a charming old town and a relaxed riverside vibe.

Whether you're seeking outdoor adventure, cultural discovery or simply a taste of Dordogne life, the surroundings of Maison Paysanne promise a truly memorable stay.

Local Amenities

Nearest Airport	Bergerac Dordogne Périgord Airport (40km)
Nearest Airport 2	Brive-Souillac Airport (75km)
Nearest Bar/Pub	Trémolat (2km)
Nearest Ferry Port	Bilbao/Saint-Malo (500km/566km)



Nearest Golf	Golf de la Forge (19km)
Nearest Restaurant	Trémolat (2km)
Nearest Shop	Trémolat (2km)
Nearest Supermarket	Lalinde/Le Bugue (13km)
Nearest Town	Lalinde/Le Bugue (13km)
Nearest Town/City	Bergerac (39km)
Nearest Train Station	Gare SNCF De Trémolat (3km)
Nearest Village	Trémolat (2km)

What we love

- A beautifully restored stone house blending rustic charm with modern touches
- Thoughtfully designed interiors with a new kitchen, cosy living spaces and three inviting bedrooms
- Enjoy lazy days in the south-facing garden, complete with private pool and shady hammocks
- Just 2km from riverside Trémolat – ideal for historic charm, Michelin-star dining and canoeing along the Dordogne
- A fine base for exploring the Dordogne – wonderful trips include Limeuil, Les Eyzies, Sarlat-la-Canéda and Bergerac

What you should know...

- You may spot a little building between the main house and swimming pool - this is the pool house and rest assured this is not occupied.

Terms & Conditions

- **Security deposit:** €1,000 charged to the clients' credit card prior to arrival.
- **Arrival time:** 4.00 p.m.
- **Departure time:** 10.00 a.m.
- **Energy costs included?:** Yes.
- **Linen & towels included?:** Yes, excluding pool towels. Mid-stay linen change on Monday also included for stays of two weeks or more.
- **Pets welcome?:** On request only and by prior arrangement with the owner. Please enquire at the time of booking.
- **Other Ts and Cs:** Weddings, stag/hen parties and other celebrations are not permitted. Please note that your booking will only be confirmed once we have checked availability with the owner. High chairs and cots are available for hire at a cost of €25 for each item per week (limited availability, to be pre-booked). Please note that published rates are only valid for the current year. Any bookings for subsequent years will be on request only and correct rates will be confirmed at the time of booking.
- **Changeover day:** Saturday. Other days may be possible on request in mid-season (end of May-mid July & September, approximately)
- **End of stay cleaning:** Standard changeover clean included in the price. Guests are required to leave the accommodation clean, tidy and in the same condition as on their arrival. Any extra cleaning, laundry, maintenance and/or rubbish disposal required will be charged against the security deposit.
- **Other Cleaning:** Mid-stay clean on Monday included for stays of two weeks or more.
- **Smoking Allowed?:** Outside only.
- **Other 2:** While passport and flight details are not legally required for entry into this country, the owner of the property has specifically requested that this information be provided in advance. This requirement is part of their internal check-in procedure and is necessary to facilitate your arrival and ensure a smooth start to your stay.
- **Insurance:** Guests are required to be in possession of a valid insurance policy, which covers them for civil liability as well as cancellations, personal belongings, public liability and any accidental damage caused during their stay. A copy of this policy will be requested by the owner before arrival.
- **Minimum stay:** 7 nights.
- **Heating costs included?:** Yes. Included in low season. From end of May to end of September, heating is on request and at a supplement.
- **Tax:** French Visitors Tax payable on booking confirmation (typically costs €2-€5 per adult per night). Exact cost will depend on number of adults travelling and duration, and will be advised at the time of booking.
- **Pool towels included?:** Yes.