

Chateau Du Chevalier

Region: Brittany **Sleeps:** 15

Overview

Château Du Chevalier is an authentic 15th-century home that promises comfort, cosiness and charm in equal measure, only half an hour from the Brittany's sandy coast.

Set within a beautiful 54-acre estate, the château offer a wonderful setting for family holidays or a getaway with friends. With its towers, original stonework, old paintings and countryside views, this historic gem is a place to create lasting memories.

Step inside and admire the original 15th century fireplace in the dining room, perfect for chef-prepared feasts or cheese and wine-tasting. Oak beams and 18th-century wood panelling lend warmth and character to the drawing rooms, while the elegant library and traditional country-style kitchen invite leisurely mornings and convivial evenings. Each of the château's seven bedrooms and five bathrooms tells its own story, combining old-world elegance with modern-day comfort.

Château Du Chevalier is one of four residences within the vast estate - a playground for all ages. Wander between three tranquil ponds with summer waterfalls and streams, make the most of the shared heated swimming pool or savour al-fresco aperitifs beside the chapel as the sun sets over the valley. Guests can try their hand at fishing or hunting, arrange local wine tastings or simply stroll through the grounds, pausing often to take in the ever-changing light on the landscape.

Château Du Chevalier is wonderfully positioned to explore the delights of Brittany. Just over 5km away lies Combourg, with its medieval castle and pretty town centre. A little further afield, the cultural riches of Rennes and the Brittany coastline await, while history lovers can visit the incredible Saint Mont-Michel or plan a poignant day trip to the D-Day beaches. Golfers will find several courses across the wider region.

From the first blossoms of spring to mist-draped winter mornings, this château is as enchanting as the seasons themselves. Whether gathered by the fire in autumn or basking in the summer sun by the swimming pool, guests are sure to find a sense of historic magic at Château Du Chevalier.

Facilities

Cycling • Walking/Hiking Paths • Horse Riding • Watersports • Historical Sites • Wine Tasting • Tennis Nearby • Fishing • Golf Nearby • Sailing • Boat Trips • Chateaux & Castles • Romantic • Ideal for Parties • Weddings • Ideal for Kids • Cots (Cribs) • Chef/Cook Available • Ideal for Teens • Great Value • Marquee Hire Permitted • Has Discount • Special Offer • Heated Pool • Maid Service Available • Pets on Request • Chapel on Site •



Outdoor Ceremony • Ground Floor Bed & Bath • <1hr to Airport • Shared Pool • Pool Safety Feature • Heritage Collection • Wi-Fi/Internet • Rural Location • Washing Machine • Indoor Reception Available • Outstanding Landscapes • Outdoor Pursuit & Activities • Tourist Towns & Villages • Dishwasher • Outdoor Games • Table Football • Working Fireplace/Woodburner • Heating • Conference Facilities • Caretaker/Owner on Site • Zoo • Aquarium • Theme park • Wine-Tasting Available • Water park • Ideal for Babies & Toddlers • High Chair(s)

Interior & Grounds

Château Interiors

Ground Floor

- Two entrances (south and north) with hallway with mosaic flooring
- Dining room with a stunning 15th century fireplace and grand oak table seating up to 22
- 18th century drawing room and library with precious exhibit paintings and antique furniture
- 18th century drawing room with fireplace, precious exhibit paintings and antique furniture
- Fully equipped kitchen with dishwasher and washing machine
- Bedroom with double bed (140x200cm), table football and bathroom with shower and toilet

First Floor

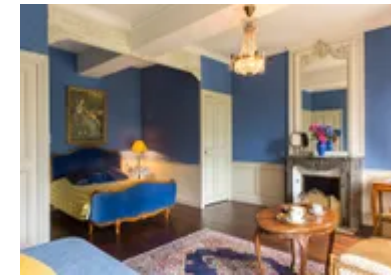
- Bedroom (approx. 30m²) with park view, double bed (140x200cm), single bed (90x200cm), fireplace and bathroom with bath/shower and toilet
- Bedroom (approx. 18m²) with park view, two single beds (90x200cm), fireplace and vanity alcove
- Bedroom (approx. 18m²) with park view, two single beds (90x200cm) and fireplace
- Bathroom with shower and toilet
- Bedroom (approx. 30m²) with valley view, two single beds (90x200cm), fireplace and bathroom with shower and toilet
- Bedroom (approx. 30m²) with valley view, two single beds (90x200cm), fireplace and vanity alcove

Second Floor

- Tower bedroom (approx. 40m²) with valley view, two single beds (90x200cm), fireplace and bathroom with bath/shower and toilet

Outside Grounds

- Garden furniture, parasols and large barbecue (for château guests)
- Shared heated swimming pool (12m x 5m), open approximately May to end-September (8.00 a.m. to 9.00 p.m.) within walled kitchen garden (with safety gate access)
- Access to shared estate (54 acres) with three ponds, waterfalls, streams and walking trails
- Rowing boat (and fishing opportunities)
- Early 18th-century Chapel (approx. 100m² with 10m-high ceiling and great acoustics)



Location & Local Information

Château Du Chevalier enjoys a prime location just 5.5km from the charming village of Combourg, known for its striking château and inviting centre. Within easy reach, you'll find the cultural treasures of Rennes (37km) whilst the vast sandy beach at Cherrueix is just half an hour by car.

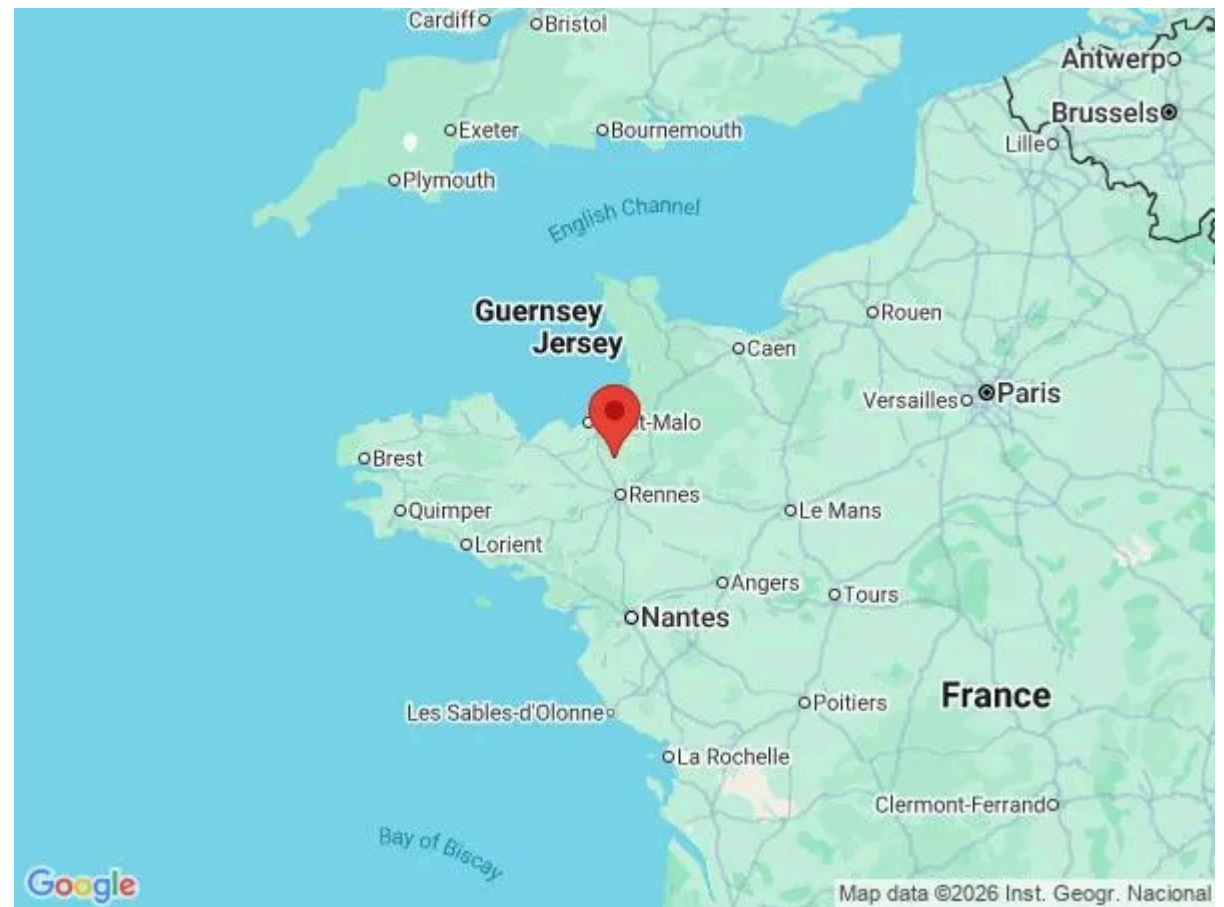
The château is conveniently located around 45km from Saint-Malo's historic ferry port and a similar distance to Rennes Airport, ensuring straightforward travel connections. Saint-Malo itself boasts a remarkable walled town and serves as the departure point for ferries to the Channel Islands.

Just along the coast lies Cancale (48km), a picturesque fishing town famed for its oysters, where seafood lovers from around the globe gather to enjoy fresh shellfish in charming waterfront eateries. Meanwhile, golfers are well catered for, with many scenic courses across the wider region including Les Ormes (16.5km) and the especially picturesque Dinard Golf (55km) with sea views from the fairways.

Other notable attractions include the iconic Mont Saint-Michel (44km), a former abbey and pirate stronghold, as well as the medieval towns of Vitré (58km) and Dinan (30km), each offering beautifully preserved architecture dating back to the 12th century. For history enthusiasts, a day trip to the D-Day landing beaches, just over two hours away, offers a poignant and memorable experience.

Local Amenities

Nearest Airport	Rennes Bretagne Airport (45km)
Nearest Airport 2	Dinard Airport (48km)
Nearest Airport 3	Nantes Atlantique Airport (153km)
Nearest Beach	Plage de Cherrueix (30km)
Nearest City	Rennes/Saint-Malo (37km/45km)
Nearest Ferry Port	Saint-Malo (45km)
Nearest Golf	Domaine des Ormes (15km)
Nearest Restaurant	Combourg (4.5km)
Nearest Supermarket	Combourg (5.5km)



Nearest Town	Dinan (30km)
Nearest Village	Combours (5.5km)

What we love

- This is a truly authentic French château with many historic features
- The shared heated swimming pool set in beautiful landscaping is the perfect place to relax in the afternoon
- During the spring and summer, the ponds are interconnected with waterfalls and streams
- Enhance your stay with private chef dinners, archery and riding, plus tastings of Calvados, cider, cheese and wine. Hunting and fishing are also possible.
- A fine location for exploring Brittany from vast sandy beaches to historic towns and cities including Rennes and Saint-Malo
- Mont Saint-Michel, one of France's most iconic destinations, is a wonderful day trip less than an hour away

What you should know...

- Château Du Chevalier is located within a large estate, also home to three annexe buildings which can be rented separately – the pool and grounds are shared between all guests staying on the estate.
- To book the full estate exclusively (for up to 35 guests), please see Château du Chevalier and Annexes (<https://www.oliverstravels.com/france/brittany/chateau-du-chevalier-and-annexes/>).
- The owners live onsite on the first floor of one of the Rose House.
- If staying with children, please note there are ponds/water sources within the grounds.
- A car is essential here - make sure to use GPS to find the château; Brittany's roads can be unforgiving!

Terms & Conditions

- **Security deposit:** €1000 paid in cash, credit card or cheque to the owner and refunded upon departure, subject to full inspection.
- **Arrival time:** 5.00 p.m.
- **Departure time:** 10.00 a.m.
- **Energy costs included?:** Yes.
- **Linen & towels included?:** Extra €15 per person, paid locally.
- **Pets welcome?:** Well-behaved pets welcome on request only and with prior agreement with the owner.
- **Other Ts and Cs:** Guests will be required to sign a copy of the owner's rental terms before the arrival.
- **Changeover day:** Saturday.
- **End of stay cleaning available?:** Yes. However, guests are required to leave the accommodation clean, tidy and in the same condition as on their arrival. Any extra cleaning, laundry, maintenance and/or rubbish disposal required will be charged against the security deposit.
- **Smoking Allowed?:** Outside only.
- **Insurance:** Guests are required to be in possession of a valid insurance policy, which covers them for cancellations, personal belongings, personal liability and any accidental damage caused during their stay.
- **Minimum stay:** 2 nights.
- **Pool heating charge?:** Included. Please note that like all heated pools, pool heating and water temperature are reliant on weather and outside temperatures.
- **Tax:** French Visitors Tax payable locally (typically costs €1-€10 per adult per night- please enquire if exact amount is required).
- **Pool opening dates?:** The pool is open and heated approximately from May to end-September. Please note that pool opening dates are subject to local weather conditions and pool maintenance requirements and that cooler months may not be suitable for swimming.