

Chapelwood House

Region: The North West Sleeps: 18

Overview

Imagine arriving at a gracious mid 19th century residence where the mellow façade and sash windows hint at stories of generations past. This is the moment of arrival at Chapelwood House, a distinguished home built in 1840, which now stands as a refined retreat for up to 18 guests. Inside you are greeted by generous proportions alongside period character, the sort of residence where every room connects to a narrative of comfort and ease. The courtyard faces south, the sunlight spilling over paving stones and outdoor seating where you might linger with a drink as the evening glow softens across the trees.

Step through into the heart of the home: the expansive kitchen and dining space designed for real gatherings, featuring high-end appliances such as a Lacanche range, Nespresso machine and American fridge freezer with ice maker, alongside sofas, a large dining table and doors opening to the courtyard. Beyond lies an elegant living room with open fire, a dedicated cinema lounge and a formal dining room. Every corner invites conversation and laughter, whether over a candlelit supper, film night or board game by the fire.

On the leisure wing you'll find a gym and heated indoor pool whilst Sonos connected speakers are throughout the ground floor and pool area. Outside, relax in the hot tub before preparing a summer feast by the outdoor kitchen with its Weber gas barbecue, pizza oven and bar.

Each of the eight bedrooms offers a sumptuous retreat, six with ensuite bathrooms to ensure comfort and privacy. Upstairs, the main house hosts five beautifully appointed bedrooms, all with super king-size double beds (two with flexible zip-and-link options). In the charming wing downstairs, three further bedrooms, including an impressive bunk room for four, provide an ideal setup for multi-generational stays.

Chapelwood House is located in Bickerton on the Cheshire Ridge, a region of rolling countryside, good pubs and restaurants, local villages and wonderful walks. Just a 20km drive away, the historic city of Chester invites exploration with its Roman walls, timbered architecture, inviting shops and vibrant dining scene.

Whether you come for shared memories or cherished moments of respite, Chapelwood House offers a setting where conversation lasts into the night and the countryside air remains with you long after your stay has ended.

Facilities

Ideal for Kids • Walking/Hiking Paths • Horse Riding • Historical Sites • Private Pool • Wellness • Cycling • Chef/Cook Available • Cots (Cribs) •



Ideal for Teens • Heated Pool • Pets on Request • Manor • Has Discount •
Special Offer • Indoor Pool • Ground Floor Bed & Bath • <1hr to Airport •
Parking Space • Wi-Fi/Internet • BBQ • Rural Location • Outstanding
Landscapes • Coffee Machine • Outdoor Pursuit & Activities • Tourist
Towns & Villages • TV • Games Room • Gym/Fitness Room • Hot Tub •
Dishwasher • Microwave • Smart TV • Home Cinema • Working
Fireplace/Woodburner • Heating • Zoo • Forest park/High-rope course •
Catering Available • Croquet • Ideal for Babies & Toddlers • Stair gates •
High Chair(s)

Interior & Grounds

House Interiors

Ground Floor

- Entrance hallway
- Living room with sofas, armchairs and fireplace
- Dining room with table for 18 guests
- Kitchen, fully-equipped including Lacanche Range cooker (two electric double ovens and five-burner hob), American fridge-freezer with ice-maker, dishwasher, microwave, toaster and Nespresso machine. Two sofas, dining table for 18 guests and doors opening to south-facing courtyard
- Games room (due late autumn 2025)
- Cinema room with TV
- Gym with running machine, cross trainer, free weights, bench and TV
- Heated indoor swimming pool, relaxation area and pool games

First Floor

- Master bedroom 1 with super king-size double bed and en suite bathroom
- Bedroom 2 with super king-size double bed (zip-and-link mattress, can be set up as twin) and en suite bathroom
- Bedroom 3 with super king-size double bed (zip-and-link mattress, can be set up as twin) and en suite bathroom
- Bedroom 4 with super king-size double bed and en suite bathroom
- Bedroom 5 with super king-size double bed and en suite bathroom

Ground Floor Wing

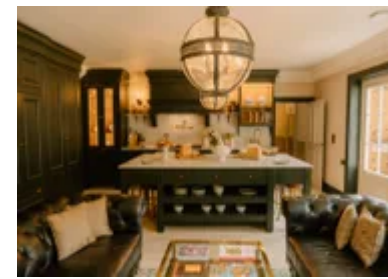
- Bedroom 6 with super king-size double bed and en suite bathroom
- Bedroom 7 with two sets of bunk-beds (for 4 people)
- Bedroom 8 with super king-size double bed (zip-and-link mattress, can be set up as twin)
- Family bathroom with rolltop bath and wet room with walk-in shower

Outside Grounds

- South-facing courtyard with outdoor kitchen and bar
- Weber gas barbecue and Gozney pizza oven
- Outdoor lounge areas
- Hot tub
- Yoga deck
- Croquet lawn
- Roof terrace with panoramic views (due spring 2026)
- Electric gates
- Parking
- Helicopter landing area (in adjacent field)

Other Facilities

- Sonos speakers (ground floor and swimming pool)
- CCTV (one camera near swimming pool for your safety)



Location & Local Information

Set amid the rolling green landscapes of rural Cheshire, Chapelwood House offers the perfect base for exploring one of England's most picturesque counties. The surrounding area is a haven for walkers, with direct access to the renowned Sandstone Trail and Bickerton Hills - an Area of Outstanding Natural Beauty where sweeping views, lowland heath and rich wildlife abound.

For lovers of good food and drink, you'll be spoilt for choice. Across local villages such as Bunbury, Tattenhall, Tarporley and Nantwich you will come across inviting country pubs, cosy tearooms and acclaimed restaurants. Whether it's a long Sunday lunch in a beamed gastropub or fresh local produce from Nantwich's Saturday farmers market, culinary pleasures are never far away. The owners of Chapelwood House will give you information about local butchers, greengrocers, bakeries, wine merchants and more, ideal for guests who prefer to enjoy delicious, local fare at their leisure.

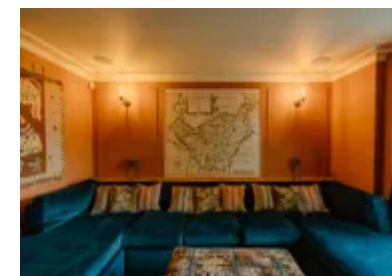
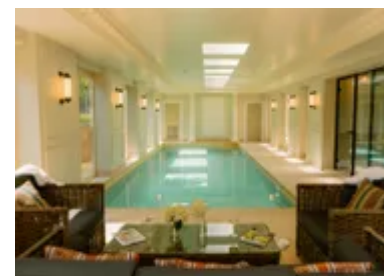
Outdoor enthusiasts will relish the chance to explore the scenic beauty of the Cheshire countryside. From leisurely rambles starting right from Bickerton village to more challenging routes along the Sandstone Ridge, the area is laced with walking trails that reveal stunning views, wildlife-rich heathland and peaceful woodland paths.

For days out, the historic city of Chester is just 20km away, offering Roman walls, great restaurants and good shopping, not far from world-renowned attractions like Chester Zoo. Golfers can take advantage of two championship courses at Carden Park Hotel which also boasts an award-winning spa for those seeking rest and rejuvenation in style.

Whether you're here to walk, relax or indulge in the finest local food and drink, Chapelwood House promises an unforgettable escape in the English countryside.

Local Amenities

Nearest Airport	Liverpool John Lennon Airport (55 km)
Nearest Airport	Manchester Airport (58 km)
Nearest Bar/Pub	The Bickerton Poacher (2 km)
Nearest City	Chester (20 km)
Nearest Golf	Carden Park Golf Resort (7.3 km)
Nearest Restaurant	The Bickerton Poacher (2 km)



Nearest Shop	SPAR Tattenhall (7 km)
Nearest Supermarket	Sainsbury's Chester (16 km)
Nearest Train Station	Whitchurch/Chester Train Station (15.5 km/19 km)
Nearest Village	Bickerton (0 km)

What we love

- A distinguished 19th-century residence combining elegant period charm with modern luxury
- Socialise in style with an expansive kitchen-dining area, beautiful living room and cinema lounge
- Relax and recharge in the heated indoor pool, outdoor hot tub or well-equipped gym
- Al-fresco evenings are made easy with an outdoor kitchen featuring a Weber BBQ, Gozney pizza oven and bar
- Perfect for families or groups – with eight gorgeous bedrooms, most with super king-size double beds and en suites
- Explore the Cheshire Ridge's walking trails, village pubs and the historic delights of Chester, just 20km away

What you should know...

- The house sleeps up to 18 guests across eight bedrooms, one of which is a quad room with two sets of bunk-beds. Babies are included in the maximum capacity.
- There are three bedrooms and two bathrooms (one en suite) in a ground floor wing with a step up to the property (a ramp can be requested in advance). For guests with restricted mobility, please contact us so we can ensure the house fully meets your requirements.
- Dogs are welcome, on request and with prior arrangement only. The owners ask that dogs are not allowed upstairs and that they stay in the boot room overnight (and dry off there after being taken for a walk).
- Watch this space for details and photos of a games room (due late autumn 2025) and a rooftop terrace with panoramic views (due spring 2026).

Terms & Conditions

- **Security deposit:** £500 charged to client's credit card by Oliver's Travels as a pre-authorisation at least 2 weeks prior to arrival and refunded two weeks after departure, subject to full inspection.
- **Arrival time:** 16:00-21:00
- **Departure time:** 10:00am
- **Energy costs included?:** Yes, included in the rental price
- **Linen & towels included?:** Yes, included in the rental price
- **Pets welcome?:** A maximum of 2 dogs are welcome on request with prior agreement with the owner. If accepted, a pet supplement of £50 per pet per stay will apply. Dogs must stay downstairs and off the carpets.
- **Changeover day:** Monday and Friday
- **End of stay cleaning available?:** Standard changeover clean included in the price. Guests are required to leave the accommodation clean, tidy and in the same condition as on their arrival. Any extra cleaning, laundry, maintenance and/or rubbish disposal required will be charged against the security deposit.
- **Smoking Allowed?:** No smoking or vaping
- **Minimum stay:** 2 nights. This may be increased at peak times.
- **Heating costs included?:** Yes, included in the rental price
- **Internet access?:** Yes
- **Stag & Hen Do Allowed? :** Not allowed