

Earnshill House

Region: The South West **Sleeps:** 20

Overview

From the moment you arrive at Earnshill House, you'll sense you've stepped into an extraordinary chapter of Somerset's countryside. Set at the head of a sweeping drive and surrounded by 700 acres of parkland, woodland and rolling landscapes, this Grade I listed manor house offers a destination for holidays, celebrations or weddings that feel joyful and personal yet refined and grand.

The house itself is a masterclass of Georgian ambition and Palladian grace. Built of warm brick with Hamstone dressings, it carries the proportions of the era with wide facades, tall sash windows and wings that balance structure and light with ease. Inside you will discover eight beautifully appointed bedrooms in the main house, including two sumptuous suites, and a self-contained wing configured for four more guests should you wish to expand the occasion.

Earnshill House offers a seamless blend of grandeur and comfort across its living spaces, inviting both elegant entertaining and relaxed moments. The formal dining hall is ideal for celebratory dinners or long, convivial meals. In contrast, the oak-panelled library encourages quiet reading with its hundreds of books and warm atmosphere, while the drawing room, crowned by an ornate ceiling, sets a striking backdrop for morning conversation or evening drinks. The snug features a log burner and a cleverly concealed 65-inch TV whilst the games room with its pool table promises friendly competition. Finally, the newly appointed kitchen has everything a cook could wish for – indeed, guests can also opt to book catering or a private chef and serving staff, ensuring every detail is taken care of.

For moments of wellbeing and indulgence, the house reveals a surprising sense of modern sanctuary. The onsite gym offers a private space to energise, while the traditional Finnish sauna awaits, helping to melt away tension and reset both body and mind. Just beyond, the secret garden holds one of the house's most delightful discoveries: a 6-seater hot tub tucked beneath a gazebo, complete with mood lighting and Bluetooth connectivity for music under the stars.

Historic and rooted in its landscape, Earnshill House has been in the hands of the same family for nearly three centuries. Constructed in the early 18th century, it is located in the Somerset countryside, near the village of Hambridge and only 20km from Taunton. It's possible to pre-arrange a wealth of activities across the vast estate such as horse-riding, hot-air balloon rides, bushcraft and even axe-throwing. Or simply spend quality time together taking long strolls towards the river, admiring the romantic rose walk, creating dens in the 19-acre woodland or picnicking in the shade of ancient trees.

From grand gatherings to quiet moments of rest, Earnshill House offers a setting where heritage meets comfort, and every corner invites you to pause, celebrate and connect.



Facilities

Weddings • Wellness • Fishing • Ideal for Xmas/NY • Canoeing/Kayaking
• Horse Riding • Walking/Hiking Paths • Ideal for Kids • Walk to Village •
Ideal for Teens • Manor • Chef/Cook Available • Instagrammable • Parking
Space • Heritage Collection • Wi-Fi/Internet • Rural Location • Washing
Machine • Coffee Machine • Outstanding Landscapes • Outdoor Pursuit &
Activities • Tourist Towns & Villages • Spa/Massage • Pool/Snooker •
Games Room • Gym/Fitness Room • Hot Tub • Tumble Dryer •
Dishwasher • Microwave • Smart TV • Satellite TV • Sauna/Steam •
Heating • Caretaker/Owner on Site • Catering Available

Interior & Grounds

House Interiors

Ground Floor

- Grand entrance (via staircase) with historic family portraits
- Drawing room with ornate dome ceiling
- Formal dining hall with table for up to 16 guests
- Library
- TV snug with 65-inch TV (hidden), log burner and table
- Games room with pool table
- Gym (weights, squat rack, bar bell, treadmill, rowing machine and exercise bike) and 6-seater traditional Finnish sauna with doors opening to secret garden with gazebo and hot tub
- Kitchen, fully equipped including induction oven and hob, two dishwashers, large fridge, Nespresso machine and double air fryer
- Utility room with washing machine, dryer, fridge and chest freezer
- Study with Starlink Wi-Fi (coverage throughout house)
- Boot room with washing facilities
- Servants entrance with original bells

First and Upper Floor Bedrooms

- Suite (on first-floor west wing). Bedroom with super king-size double bed and sitting room with log-burner, sofas and 55-inch TV. Shower room
- Suite (on first-floor east wing). Bedroom with super king-size double bed and sitting room with log-burner, 55-inch TV and views. Bathroom with rolltop bath and rainfall shower
- Bedroom with super king-size double bed and en suite bathroom with roll top bath and walk-through rainfall shower
- Bedroom with super king-size double bed and en suite bathroom with roll top bath and walk-through rainfall shower
- Bedroom with super king-size double bed and en suite shower room



- Bedroom with super king-size double bed and bathroom with roll top bath and shower
- Bedroom with king-size four-poster bed and cloakroom
- Bedroom with super king-size double bed and shower room

All super king-size double beds can also be split as twins on request

Self-contained Adjoining Wing

- Kitchen-diner and living area with sofa-bed
- 2 x bedrooms
- Shower room

Two foldaway beds are also available for young children (under 10) on request.

Outside Grounds (700-acre setting)

- Secret garden with gazebo and hot tub
- Walled garden
- Rose walk
- Croquet lawn
- Coach houses and stables
- Private woodland (19 acres)
- River frontage (to the north of the estate)
- Car parking area

Location & Local Information

In rural Somerset, Earnshill House is located close to the small village of Hambridge, a peaceful corner of the county rich in pastoral beauty and English charm. If arriving by train, Taunton (20km) has direct services from London Paddington whilst Exeter Airport is less than an hour away by car.

Set in a 700-acre estate, guests can explore the private grounds on foot or horseback (do book well ahead to arrange horse-riding). Pack a hamper and enjoy a picnic under the stately cedar tree before returning home via the fragrant rose walk and topiary. A longer walk leads you to the River Isle, which marks the estate's northern boundary - keep an eye out for kingfishers, deer and the estate's resident pair of white swans. For something unforgettable, take to the skies in a private hot air balloon ride - lift off directly from Earnshill's lawns and float above the Somerset Levels for breathtaking panoramic views.

For those looking for active pursuits, shooting is just a short drive away and fishing enthusiasts will appreciate nearby opportunities on the local rivers. Nature lovers can explore the RSPB Swell Wood Nature Reserve just 8km away or venture towards the north coast for WWT Steart Marshes near Bridgwater, a haven for wetland wildlife.

A short drive from the estate, the historic village of Curry Rivel is home to independent shops and charming eateries, while the elegant National Trust property Barrington Court offers a step back into Tudor grandeur.

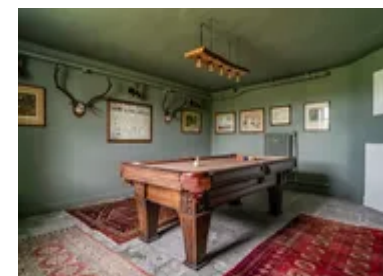
For a seaside excursion, Lyme Regis (38km) on the Dorset coast is perfect for fossil hunting or a seafood lunch. Further afield, consider a day trip to the iconic Roman Baths in Bath (68km) or the dramatic limestone cliffs of Cheddar Gorge (42km).

At Earnshill House, the spirit of southwest England is all around you – picturesque and steeped in historic charm.



Local Amenities

Nearest Airport	Exeter Airport (67.5 km)
Nearest Bar/Pub	Lamb & Lion (1.5 km)
Nearest Beach	West Bay Beach Dorset (40.5 km)
Nearest Restaurant	Brown & Forrest Smokery (3 km)
Nearest Supermarket	Tesco Superstore, Langport (9 km)
Nearest Town	Taunton (20 km)



Nearest Village	Hambridge (1 km)
-----------------	----------------------------

What we love

- A superb historic setting for family holidays or romantic English weddings, surrounded by beautiful Somerset countryside
- Inviting spaces for every mood – from the ornate drawing room, grand dining hall and oak-panelled library to the games room and cosy snug with 65-inch TV
- Wellness highlights include a state-of-the-art gym, Finnish sauna and hot tub in the secret garden
- Enjoy long walks, shaded picnics and wildlife spotting across the vast estate with its walled garden, rose walk, grove and 19 acres of woodland
- With roots in the 18th century, the estate's fascinating heritage includes a claim as the birthplace of lawn tennis
- Pre-arrange private catering, chef-cooked meals, pampering treatments or estate activities like horse-riding, bushcraft and hot-air balloon rides
- Ideally placed for exploring Somerset's pretty villages, market towns and England's southwest coastline

What you should know...

- There are eight bedrooms in the main part of the house and two additional bedrooms (plus a sofa-bed, on request) in a self-contained wing – please see the "Layout" tab for full details.
- Two foldaway beds are also available for young children (under 10). Please request in advance to ensure their availability.
- A range of activities and services can be arranged – please see the "Extras" tab and make sure you pre-book well in advance of your stay.

Terms & Conditions

- **Security deposit:** £1500 charged to client's credit card by Oliver's Travels as a pre-authorisation at least 2 weeks prior to arrival and refunded two weeks after departure, subject to full inspection.
- **Arrival time:** 4:00pm
- **Departure time:** 10:00am
- **Energy costs included?:** Yes, included in the rental price.
- **Linen & towels included?:** Yes, included in the rental price.
- **Pets welcome?:** Not allowed.
- **Changeover day:** Flexible
- **End of stay cleaning available?:** Standard changeover clean included in the price. Guests are required to leave the accommodation clean, tidy and in the same condition as on their arrival. Any extra cleaning, laundry, maintenance and/or rubbish disposal required will be charged against the security deposit.
- **Smoking Allowed?:** Not allowed.
- **Minimum stay:** 3 nights
- **Pool towels included?:** Yes, included in the rental price.
- **Stag & Hen Do Allowed? :** Weddings, stag/hen parties and any special events are on request only and subject to prior arrangement with the owner and additional charges.