

Fairfax Hall

Region: The North East **Sleeps:** 20

Overview

Set within 2,500 acres of meadows, woodland and Yorkshire hills, Fairfax Hall is a reimagined country estate where every detail tells a story of heritage, craftsmanship and contemporary elegance. Originally conceived in the 18th century by an esteemed architect of the time, this Grade I listed Georgian mansion has been carefully restored and thoughtfully redefined to offer a new kind of rural luxury, rooted in history yet designed for modern celebration.

Step through the grand entrance and into a world that feels both historic and entirely your own. The home's expansive living spaces invite you to take over exclusively, with magnificent reception rooms, a showstopping spiral staircase and a hand-crafted kitchen ready to host unforgettable dinners. Upstairs, each of the 10 ensuite bedrooms has been individually styled, blending original Georgian features with calming, nature-led design and indulgent touches like rain showers, roll-top baths and super king-size beds. For larger parties, additional accommodation is on request.

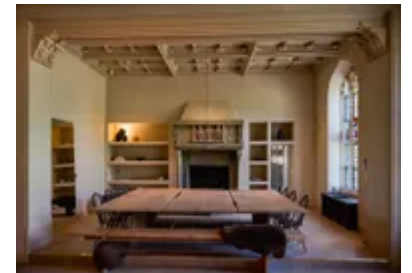
Every inch of Fairfax Hall reflects a commitment to beauty and sustainability. A muted, earthy palette and natural materials echo the moorland beyond, with contemporary handmade lighting and bespoke furnishings softening the grandeur of the original interiors. Whether gathered around the 20-seater oak dining table, enjoying cocktails at the private bar or listening to the baby grand piano drift through the hall, soak up this unique English experience.

Just moments from the upmarket town of Ilkley and only 26km from Leeds, Fairfax Hall feels both wonderfully remote and effortlessly accessible. Surrounded by Yorkshire countryside and a deer-dotted reserve with ancient woodland and large lake, it's a setting that inspires calm, connection and celebration.

Whether you're planning a weekend getaway, a wedding or an extraordinary gathering, Fairfax Hall offers a high-end country house experience in beautiful rural surroundings.

Facilities

Weddings • Eco Friendly (Sustainable) • Cycling • Golf Nearby • Historical Sites • Walking/Hiking Paths • Romantic • Ideal for Kids • Chef/Cook Available • Licensed for Marriage • Marquee Hire Permitted • Ideal for Teens • Cots (Cribs) • Maid Service Available • Pets on Request • Outdoor Ceremony • Instagrammable • All Bedrooms En-Suite • Flexible Catering Options • <1hr to Airport • Parking Space • Heritage Collection • Country Estate • Wi-Fi/Internet • BBQ • Rural Location • Indoor Reception Available • Nearby Church/Chapel • Outstanding Landscapes • Outdoor



Pursuit & Activities • Tourist Towns & Villages • TV • Pool/Snooker • Games Room • Sauna/Steam • Outdoor Games • Home Cinema • Heating • Spa Treatments Available • Catering Available • Ideal for Babies & Toddlers • High Chair(s)

Interior & Grounds

Hall Interiors

- Grand entrance hallway with spiral staircase
- Reception rooms
- Dining room with handmade oak dining table for 20 guests
- Snooker and games room
- Kitchen
- Private bar
- Scullery and boot room

Upstairs

- 10 x bedrooms with super king-size double bed and en suites with roll top baths and rain showers

Additional accommodation is available across the wider estate on request – please ask for details and pricing.

Outside Grounds (2500-acre estate)

- Large lake
- Sauna (beside the lake)
- Deer park, woodland, meadows and countryside
- Plenty of parking

Other Facilities

- Baby grand piano
- Sonos speakers
- 85-inch TV
- 15 dry robes available for wild swimming



Location & Local Information

Fairfax Hall offers guests an incredible retreat on the edge of the Yorkshire Dales, amidst the rolling landscapes of West Yorkshire. Located within a 2,500-acre reserve, the estate is a haven of unspoilt beauty, home to a rich tapestry of wildflower meadows, ancient woodland, a lake and a deer park. This vast landscape invites visitors to explore and reconnect with nature, yet you are only 4.5km from the elegant spa-town of Ilkley.

The estate’s reserve is more than a beautiful backdrop; it’s a living project dedicated to ecological restoration. Moving away from traditional land use, the working estate is pioneering nature-led management, enhancing natural habitats, improving soil health and planting over 40,000 trees to date. They are also hoping to welcome beavers to its rivers and wetlands, a milestone moment that supports flood mitigation and boosts biodiversity across the landscape.

A short drive away, Ilkley is renowned for its independent shops, cafes and the famous Ilkley Moor, perfect for a bracing walk with panoramic views. A little further afield, the Victorian charm of Harrogate (28km) and the cultural buzz of Leeds (28km) offer a tempting mix of boutiques, galleries and heritage architecture, or follow the footsteps of the Brontë sisters in Haworth (27km). For lovers of the outdoors, the surrounding area brims with opportunities to roam, with the Yorkshire Moors beckoning walkers, photographers and nature lovers alike.

Guests are also ideally positioned to explore a host of nearby attractions. Wander the majestic ruins of Bolton Abbey (14km), uncover centuries of history at Skipton Castle (20km) or visit the UNESCO-listed village of Saltaire (18km), where Victorian industrial heritage meets vibrant modern culture.

Whether you’re seeking an ideal events venue, a restorative escape or a base for adventure, Fairfax Hall promises a rich and rewarding stay amid some of Yorkshire’s most inspiring scenery.



Local Amenities

Nearest Airport	Leeds Bradford Airport (15km)
Nearest Airport 2	Leeds Bradford Airport (106km)
Nearest Bar/Pub	Askwith (4km)
Nearest City	Leeds (26km)
Nearest Golf	Ben Rhydding Golf Club (3.6km)
Nearest Restaurant	Inn/restaurant in local village (4km)



Nearest Shop	Ilkley (4.5km)
Nearest Supermarket	Tesco, Ilkley (4.5km)
Nearest Town	Ilkley (4.5km)
Nearest Train Station	Ben Rhydding (2.7km)
Nearest Village	Small rural village (4km)

What we love

- This restored Grade I listed Georgian mansion blends historic grandeur with elegant, contemporary design
- Ideal for unforgettable celebrations, idyllic rural weddings and exclusive weekend escapes
- Set on 2,500 acres of Yorkshire countryside, including ancient woodland, meadows, a deer park and beautiful lake with a jetty and sauna
- Entertain in style with a handcrafted kitchen, grand reception rooms, baby grand piano and a private bar
- Ten ensuite bedrooms offer nature-inspired interiors, super king-size beds, rain showers and roll-top baths
- Just 5km from the upmarket town of Ilkley and close to a wealth of wonderful attractions across Yorkshire

What you should know...

- For larger groups or events, there is additional accommodation in the wings of Fairfax Hall and across the wider estate - please ask for details and pricing.
- There are wild swimming lakes at Fairfax Hall. Please ensure children are supervised at all times within the property grounds and when near any bodies of water.

Terms & Conditions

- **Security deposit:** £2500 charged to client's credit card by Oliver's Travels as a pre-authorisation at least 2 weeks prior to arrival and refunded two weeks after departure, subject to full inspection.
- **Arrival time:** 3:00 pm
- **Departure time:** 11:00 am
- **Energy costs included?:** Yes, included in the rental price
- **Linen & towels included?:** Yes, included in the rental price
- **Pets welcome?:** Yes, on request only and with prior agreement with the owner. Please enquire at time of booking.
- **Changeover day:** Flexible
- **End of stay cleaning available?:** Standard changeover clean included in the price. Guests are required to leave the accommodation clean, tidy and in the same condition as on their arrival. Any extra cleaning, laundry, maintenance and/or rubbish disposal required will be charged against the security deposit.
- **Smoking Allowed?:** No smoking or vaping
- **Minimum stay:** 2 nights
- **Heating costs included?:** Yes, included in the rental price