

# Crescendo

**Region:** Scottish Borders **Sleeps:** 4

---

## Overview

On the edge of a sweeping Scottish estate, Crescendo is an artistic retreat unlike any other. Shrouded by bordering woodland, this two-bedroom heritage lodge feels worlds away from the ordinary. Originally built in the early 1900s and thoughtfully restored to modern grandeur, Crescendo brings together character, bold design and a warm, storybook charm.

Inside, the interiors feel both playful and poetic. Velvet and chrome seating in soft art deco curves invites you to unwind in the cosy lounge corner overlooking the striking Arcadian mural. In the open kitchen and dining space, a 16th-century antique table sets the scene for intimate meals or spend warm summer days dining al-fresco beside the barbecue and rather decadent outdoor bath tub, set within the large garden leading out to woodland.

The downstairs bedroom offers twin beds against an impressive mural by a local artist, with a rain shower en-suite. Upstairs, the main bedroom feels like its own world, with a bathroom just opposite where a luxurious bathtub enjoys woodland views alongside a walk-in rain shower. Homemade treats, soft organic bathrobes and bespoke toiletries crafted from the estate's own botanicals bring an added layer of comfort and quiet indulgence.

Set within a vast estate, Crescendo grants you access to 2,000 acres of untamed beauty. Follow trails to two secluded beaches, kayak on mirror-still lochs, lose yourself in a hedge maze or simply gaze at the waterfalls. With ancient woodland, coastal hikes and seasonal blooms, the estate is an ever-changing canvas of nature's finest work.

A range of thoughtfully curated experiences can be arranged, from forest bathing, archery and loch fishing to in-lodge massages, beachside picnics and bonfires, evening drinks in the walled garden, and delicious ready-to-eat meals delivered to your door from the estate's sustainably focused castle kitchen.

Just 2km away, the fishing village of Portpatrick offers seaside charm with its pastel buildings, harbourfront pubs and clifftop trails. Across the wider region, visit ruined castles, botanical gardens and wild beaches all within a short drive. Crescendo is the kind of place that stays with you, whether you're here to slow down or to lose yourself in the raw beauty of southwest Scotland.

## Facilities

Walking/Hiking Paths • Canoeing/Kayaking • Golf Nearby • Fishing • Ideal for Kids • Historical Sites • Boat Trips • Special Offer • Has Discount • Ideal for Teens • Cots (Cribs) • All Bedrooms En-Suite • Beach Nearby •



Cottage • Parking Space • Wi-Fi/Internet • BBQ • Rural Location • Washing Machine • Outstanding Landscapes • Coffee Machine • Outdoor Pursuit & Activities • Hairdryer • Tourist Towns & Villages • Tumble Dryer • Dishwasher • Microwave • Smart TV • Heating • Ruins • Water excursions/Boat trips • Catering Available • On-Site Concierge • Bathroom Toiletries • Ideal for Babies & Toddlers • High Chair(s)

# Interior & Grounds

## House Interiors

### Ground Floor

- Open-plan living area with TV and books
- Open-plan dining area with antique table and well-equipped kitchen including fridge-freezer, microwave, dishwasher, induction cooker, double oven, kettle and cafetiere
- Bedroom with twin beds and en suite bathroom with rain shower

### Upstairs

- Bedroom with king-size double bed, workspace and bathroom with bath tub and separate rain shower

### Exterior

- Outdoor dining table and chairs
- Barbecue and firepit kit
- Outdoor bath
- Large garden (not enclosed)
- Parking

### Additional Facilities

- Radiant underfloor heating
- Bluetooth speaker
- Organic slippers and bathrobes

### Estate's Gardens and Grounds (2000-acre estate with castle and lodges)

- Walled garden with Victorian glasshouse
- Woodland garden
- Hedge maze
- Flower collection
- Two secluded beaches
- Glen and two waterfalls
- Upper and lower loch
- Beech woodland with fairy doors
- Hiking trails (including coastal trail)



# Location & Local Information

Perched along south-west Scotland's coastline, this incredible 2000-acre estate offers guests a truly magical escape into nature and history. Spanning from the charming village of Portpatrick to the dramatic cliffs beneath Killantringan Lighthouse, the estate encompasses ancient woodlands, pristine lochs and secluded beaches, with spectacular views across the Irish Sea.

Crescendo is on the edge of the estate, with easy access to the road leading down to Portpatrick (2km). The pretty coastal village is home to pastel coloured houses, cosy cafes and pubs/restaurants serving food and good ale overlooking the harbour. Guests can also access Dunskey Golf Course within minutes, making it an ideal base for both relaxation and recreation.

Just beyond the village centre, follow the hiking trail to the 16th century ruins of Dunskey Castle or drive just 20 minutes to Castle Kennedy Gardens (18km) with its romantic ambience and tearoom. Logan Botanical Garden (25km) is another exceptional place to visit or try out watersports at Loch Ryan, also home to wild oysters and a variety of wildlife (the loch is a birdwatchers paradise). The maritime town of Stranraer is only 12km by car.

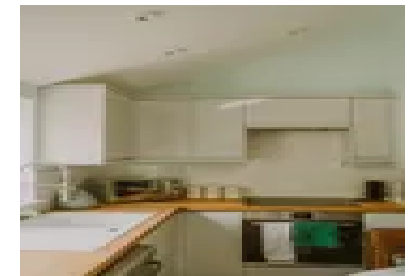
Back on the vast estate, there is so much to explore. Private paths lead to two quiet beaches, perfect for seal and dolphin spotting. Explore enchanting forest trails, lose yourself in the ten-foot-high hedge maze, discover the waterfalls or paddle a kayak or boat across one of the two serene lochs. The Victorian walled garden, with its rare botanical collections and historic glasshouse, offers a peaceful retreat. The estate's snowdrop collection is among the largest in southwest Scotland, and spring bursts to life with azaleas, camellias, bluebells and rhododendrons lining the woodland paths (guided botanical walks can be arranged).

Other estate activities (charges apply) include loch fishing, bonfires with marshmallows on the beach, yoga, meditation, forest bathing, archery, clay pigeon shooting and more. Whether birdwatching, hiking along the coast or simply admiring the views, every corner of this estate whispers of history, mystery and untamed beauty.



## Local Amenities

Nearest Airport	<b>Glasgow Airport</b> (157.5 km)
Nearest Bar/Pub	<b>Portpatrick</b> (3 km)
Nearest Beach	<b>Portpatrick Beach</b> (2 km)
Nearest City	<b>Ayr</b> (94 km)
Nearest Ferry Port	<b>Cairnryan</b> (21 km)



Nearest Golf	<b>Dunskey Golf Club, Portpatrick (2 km)</b>
Nearest Shop	<b>Gillespie John &amp; Sons Ltd General Store (2 km)</b>
Nearest Supermarket	<b>Morrisons, Stranraer (12.5 km)</b>
Nearest Town	<b>Stranraer (12 km)</b>
Nearest Train Station	<b>Stranraer Train Station (8.2 km)</b>
Nearest Village	<b>Portpatrick (2 km)</b>

## What we love

- A bold and beautiful blend of heritage charm and modern design, set within a 2,000-acre coastal estate in southwest Scotland
- Artistic interiors feature bespoke murals, antique touches and rich textures throughout
- Homemade treats await your arrival alongside organic bathrobes and toiletries crafted from the estate's botanicals
- Venture beyond your private garden to explore the estate – discover woodland trails, coastal hiking, secluded beaches, waterfalls and lochs for boating or paddle-boarding
- An array of services can be arranged from bespoke catering and in-lodge massages to bonfires by the beach, loch fishing, guided walks and so much more
- Just 2km from Portpatrick's pretty harbour, cosy cafes and local pubs

## What you should know...

- Crescendo is located on the edge of a beautiful 2000-acre coastal estate, also home to an Edwardian castle and several upmarket lodges/apartments (including Skylark (<https://www.oliverstravels.com/britain-ireland/scotland/skylark/>), Sonata (<https://www.oliverstravels.com/britain-ireland/scotland/sonata/>) and Harpstone (<https://www.oliverstravels.com/britain-ireland/scotland/harpstone/>), as featured by Oliver's Travels).
- Guests of the estate can enjoy a range of wonderful services (for an additional charge) from bespoke catering to activities and experiences - please see the "Extras" tab for details.
- A car is strongly recommended for travelling to local amenities/attractions and for reaching parts of the estate.
- The estate's gardens and grounds are currently only open to residents and guests (other than the hedge maze that is occasionally open to the public on special occasions). The estate may be open to the general public in the future – watch this space for more information.

# Terms & Conditions

- **Security deposit:** No security deposit is required for this villa. Please be aware that guests are still required to leave the accommodation clean, tidy and in the same condition as on their arrival.
- **Arrival time:** 4:00 pm
- **Departure time:** 10:00 am
- **Energy costs included?:** Yes, included in the rental price
- **Linen & towels included?:** Yes, included in the rental price
- **Pets welcome?:** Up to two pets are welcome on request only and with prior agreement with the owner. If accepted, a pet supplement of £60 per pet per stay will apply.
- **Changeover day:** Flexible
- **End of stay cleaning available?:** Extra £175, payable to Oliver's Travels with the balance payment. Guests are required to leave the accommodation clean, tidy and in the same condition as on their arrival. Any extra cleaning, laundry, maintenance and/or rubbish disposal required will be charged against the security deposit.
- **Smoking Allowed?:** No smoking or vaping
- **Minimum stay:** 3 nights. 7 nights over Christmas.
- **Heating costs included?:** Yes, included in the rental price