

Skylark

Region: Scottish Borders Sleeps: 10

Overview

Part of a grand Edwardian castle, Skylark is no ordinary apartment. Located within a vast 19th-century coastal estate, this bold reinterpretation of a castle residence brings period charm into dialogue with contemporary design. Behind the historic façade, guests will find a space that feels both storied and forward-thinking, with art deco curves, heritage features and architectural flourishes that delight at every turn.

Inside this three-storey abode, five gorgeous bedrooms await, each with its own en-suite bathroom and a distinctive personality. On the ground floor, a double bedroom with a wooden floor offers charm and character, while the upper floor bedrooms provide cosy sanctuary beneath pitched ceilings and views of the grounds. Guests can expect luxuries such as organic Egyptian cotton bedding, soft bathrobes and toiletries crafted by the estate's botanicals.

Throughout the apartment, Persian rugs, art deco spiral staircases and reclaimed hardwood floors honour the building's past, while mid-century furnishings and striking mural art bring in modern flair. The main living space is a scene straight from a design magazine, where leather rocking chairs, a gold coffee table and an ambient fireplace create a retro-modern gathering spot. Whether you're preparing a feast in the contemporary kitchen or sharing stories around the dining table, this is a home that invites togetherness.

Step outside beyond your courtyard and the estate unfolds into 2,000 acres of raw Scottish beauty. Meander through ancient woodland, follow winding trails to secret beaches or try your hand at archery, kayaking or forest bathing. Guided nature walks, bonfires by the beach at dusk and in-house massages can all be arranged, creating a holiday that is as active or restorative as you wish.

Just a short drive away, the village of Portpatrick charms with its harbourfront pubs, pastel cottages and cliff walks along the rugged coast. From wild beaches to ruined castles, the surrounding region offers discovery at every turn.

Skylark is a rare find - a place where history breathes, design inspires and nature envelops, offering a rich and memorable escape in one of Scotland's most captivating corners.

Facilities

Chateaux & Castles • Historical Sites • Canoeing/Kayaking •
Walking/Hiking Paths • Boat Trips • Ideal for Kids • Fishing • Golf Nearby •
Pets on Request • Special Offer • Cots (Cribs) • Ideal for Teens • Has



Discount • Beach Nearby • All Bedrooms En-Suite • Parking Space • Wi-Fi/Internet • BBQ • Rural Location • Washing Machine • Outstanding Landscapes • Outdoor Pursuit & Activities • Hairdryer • Tourist Towns & Villages • Tumble Dryer • Dishwasher • Microwave • Smart TV • Fire Pit • Heating • Ruins • Water excursions/Boat trips • Catering Available • On-Site Concierge • Bathroom Toiletries • Ideal for Babies & Toddlers • High Chair(s)

Interior & Grounds

Loft-Style Apartment Interiors (within the estate's castle, with its own courtyard and entrance)

Ground Floor

- Bedroom with king-size double bed and en suite bathroom

First Floor

- Open-plan living area with electric ambient fireplace
- Open-plan kitchen with breakfast bar and dining area with table for 10 guests

Second Floor (via spiral wrought-iron staircase)

- Bedroom with king-size double bed and en suite bathroom
- Bedroom with king-size double bed and en suite bathroom
- Bedroom with king-size double bed and en suite bathroom
- Bedroom with two single beds and en suite bathroom

Exterior

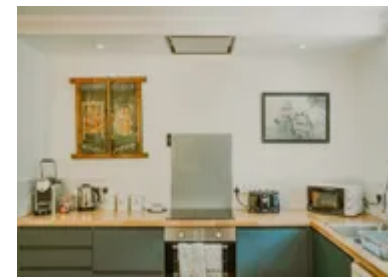
- Dedicated outdoor area for barbecue

Additional Facilities

- Bluetooth speaker
- Organic slippers and bathrobes

Estate's Gardens and Grounds (2000-acre estate with other residences)

- Walled garden with Victorian glasshouse
- Woodland garden
- Hedge maze
- Flower collection
- Two secluded beaches
- Glen and two waterfalls
- Upper and lower loch
- Beech woodland with fairy doors
- Hiking trails (including coastal trail)



Location & Local Information

Set along the wild coastline of southwest Scotland, this breathtaking 2000-acre estate invites guests into a world where natural beauty and rich heritage meet. Stretching from the quaint village of Portpatrick to the dramatic cliffs below Killantringan Lighthouse, the estate encompasses ancient woodlands, shimmering lochs and quiet beaches with far-reaching views across the Irish Sea.

Skylark sits within the estate's Edwardian Castle, around 750m from the road that heads south to Portpatrick (2.5km). This postcard-perfect seaside village is known for its colourful harbourside houses, inviting cafés and welcoming pubs/restaurants serving hearty meals and local ales overlooking the harbour. Dunskey Golf Course is also only minutes away, offering guests a chance to unwind or stay active during their stay.

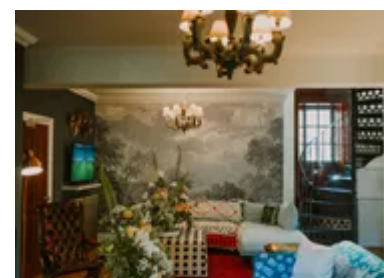
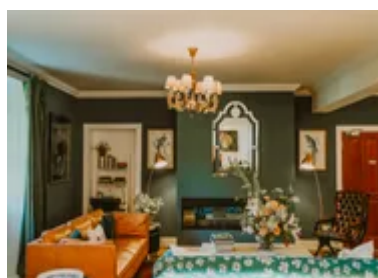
For nearby adventures, a coastal path from Portpatrick leads to the atmospheric ruins of 16th-century Dunskey Castle. A little further afield, a 20-minute drive brings you to the beautiful Castle Kennedy Gardens (18km), known for its romantic setting and charming tearoom. Logan Botanical Garden (25km) is a must for plant lovers, while the nearby waters of Loch Ryan are ideal for watersports and wildlife spotting, especially its famous oyster beds and rich birdlife. The bustling harbour town of Stranraer is just 12km away.

Back within the estate, a world of discovery awaits. Private trails lead to two wild beaches, perfect for spotting seals and dolphins. Wander through enchanted woodland paths, navigate a towering hedge maze or kayak/boat across peaceful lochs. The Victorian walled garden is a serene haven, home to exotic plants and a historic glasshouse. As spring approaches, the grounds come alive with snowdrops, azaleas, camellias and bluebells, making it a dream for nature lovers - guided botanical walks are also available.

Guests can also enjoy a variety of bookable activities across the estate (for an extra charge) including loch fishing, yoga, forest bathing, archery, clay pigeon shooting and even bonfires with marshmallows by the shore. Whether you're birdwatching, exploring the coastal trails or simply soaking in the views, this estate promises a truly unforgettable stay filled with wonder, tranquillity and a deep sense of place.

Local Amenities

Nearest Airport	Glasgow Airport (155 km)
Nearest Beach	Portpatrick Beach (3 km)
Nearest City	Ayr (95 km)
Nearest Ferry Port	Cairnryan (24 km)



Nearest Golf	Dunskey Golf Club, Portpatrick (3 km)
Nearest Shop	Gillespie John & Sons Ltd General Store (2.5 km)
Nearest Supermarket	Morrisons, Stranraer (13.5 km)
Nearest Town	Stranraer (13 km)
Nearest Train Station	Stranraer Train Station (14 km)
Nearest Village	Portpatrick (2.5 km)

What we love

- A bold, design-led apartment set within a grand Edwardian castle on a stunning 2,000-acre coastal estate
- Interiors blend period charm with contemporary flair – think Persian rugs, mural art and mid-century furnishings
- Venture beyond the castle to explore the estate – come across ancient woodland, coastal trails, wild beaches, waterfalls and lochs for boating or paddle-boarding
- A wonderful range of services can be organised from bespoke catering and in-lodge massages to bonfires by the beach, loch fishing, guided walks and so much more
- Just 2km from Portpatrick's pretty harbour, cosy cafes and local pubs

What you should know...

- Skylark is located within the historic castle of a beautiful 2000-acre coastal estate, also home to several upmarket residences (including Crescendo (<https://www.oliverstravels.com/britain-ireland/scotland/crescendo/>), Sonata (<https://www.oliverstravels.com/britain-ireland/scotland/sonata/>) and Harpstone (<https://www.oliverstravels.com/britain-ireland/scotland/harpstone/>), as featured by Oliver's Travels).
- The apartment is set over three floors with a beautiful yet narrow wrought-iron spiral staircase.
- Guests of the estate can enjoy a range of wonderful services (for an additional charge) from bespoke catering to activities and experiences - please see the "Extras" tab for details.
- A car is strongly recommended for travelling to local amenities/attractions and for reaching parts of the estate.
- The estate's gardens and grounds are currently only open to residents and guests (other than the hedge maze that is occasionally open to the public on special occasions). The estate may be open to the general public in the future – watch this space for more information.

Terms & Conditions

- **Security deposit:** No security deposit is required for this villa. Please be aware that guests are still required to leave the accommodation clean, tidy and in the same condition as on their arrival.
- **Arrival time:** 4:00 pm
- **Departure time:** 10:00 am
- **Energy costs included?:** Yes, included in the rental price
- **Linen & towels included?:** Yes, included in the rental price
- **Pets welcome?:** Up to two pets are welcome on request only and with prior agreement with the owner. If accepted, a pet supplement of £60 per pet per stay will apply.
- **Changeover day:** Flexible
- **End of stay cleaning available?:** Extra £175, payable to Oliver's Travels with the balance payment. Guests are required to leave the accommodation clean, tidy and in the same condition as on their arrival. Any extra cleaning, laundry, maintenance and/or rubbish disposal required will be charged against the security deposit.
- **Smoking Allowed?:** No smoking or vaping
- **Minimum stay:** 3 nights. 7 nights over Christmas.
- **Heating costs included?:** Yes, included in the rental price