

# Little Sonata

**Region:** Scottish Borders **Sleeps:** 2

---

## Overview

Hidden among meadows ablaze with wildflowers and sheltered by ancient woodland, Little Sonata is a poetic escape for the free-spirited. This whimsical lodge offers more than just a romantic hideaway; it invites you to embrace your wild heart, to follow the trail of birdsong and the murmur of a nearby brook.

Inside, Little Sonata reveals a bohemian fantasy brought to life. A grand linen bed glimmers with gold, crowned by a boho woven lampshade and bespoke mural. In the living room, cosy seating beckons for a slow morning coffee or a cosy night in by the wood-burning stove. Every detail whispers of romance, from the textured interiors to the view of wildflowers from the gorgeous kitchen's Belfast sink. Guests can also expect luxury Egyptian cotton linen, organic bathrobes and toiletries created from the estate's botanicals.

Outside, a private outdoor bathtub becomes your sanctuary in the lodge's wrap-around garden. Practise yoga as deer wander by, relax on the bench framed by summer pink roses or simply listen to the breeze weaving through the grasses. Whether cooking over the barbecue or soaking under the stars beside the firepit, the rhythm of nature sets the tone for your stay.

Part of a beautiful coastal estate, Little Sonata sits within a 2,000-acre expanse of unspoilt Scottish beauty. Wander through forest trails, discover hidden waterfalls, or warm your toes by a bonfire on the beach. From kayaking on one of the estate's two loch to forest bathing, this location offers both exhilaration and peace, always just moments from your door.

A short drive away, the village of Portpatrick awaits with its harbour pubs, pastel-hued cottages and rugged cliff walks. Whether you seek quiet mornings or windswept adventures, Little Sonata is a place where time stretches and the everyday falls away.

## Facilities

Walking/Hiking Paths • Canoeing/Kayaking • Historical Sites • Boat Trips • Fishing • Ideal for Kids • Has Discount • Ideal for Teens • Cots (Cribs) • Pets on Request • Special Offer • All Bedrooms En-Suite • Beach Nearby • Ground Floor Bed & Bath • Cottage • Parking Space • Wi-Fi/Internet • BBQ • Rural Location • Washing Machine • Outstanding Landscapes • Outdoor Pursuit & Activities • Hairdryer • Tourist Towns & Villages • Tumble Dryer • Microwave • Smart TV • Working Fireplace/Woodburner • Fire Pit • Catering Available • On-Site Concierge • Bathroom Toiletries • Ideal for Babies & Toddlers • High Chair(s)



# Interior & Grounds

## Lodge Interiors

### Ground Floor

- Living room with wood-burning stove
- Dining area with table for 2 guests
- Kitchen, well equipped including gas stove and washing machine
- Bedroom with king-size double bed
- En suite bathroom with bath and walk-in shower

### Exterior

- Private garden
- Outdoor bath
- Al-fresco dining table
- Barbecue and firepit
- Wishing well
- Entrance drive and parking

### Additional Facilities

- Bluetooth speaker
- Organic slippers and bathrobes

### Estate's Gardens and Grounds (2000-acre estate with Edwardian castle and other residences)

- Walled garden with Victorian glasshouse
- Woodland garden
- Hedge maze
- Flower collection
- Two secluded beaches
- Glen and two waterfalls
- Upper and lower loch
- Beech woodland with fairy doors
- Hiking trails (including coastal trail)



# Location & Local Information

Beside the rugged shores of southwest Scotland, this magnificent 2,000-acre estate offers a harmonious blend of untamed natural beauty and deep-rooted history. Spanning from the picturesque village of Portpatrick to the dramatic cliffs beneath Killantringan Lighthouse, the landscape features ancient forests, tranquil lochs and secluded beaches with sweeping views across the Irish Sea.

Little Sonata enjoys a secluded setting within the estate, just south of the grand Edwardian castle. Drive through the estate to reach the century-old entrance gates, then follow the road south to Portpatrick (3km). This postcard-worthy coastal village charms visitors with its colourful harbourside cottages, cosy cafés and friendly pubs and restaurants where hearty dishes and local ales are served overlooking the water. Dunskey Golf Course is just minutes away, perfect for a leisurely round or a bit of exercise.

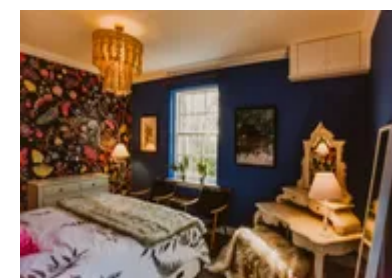
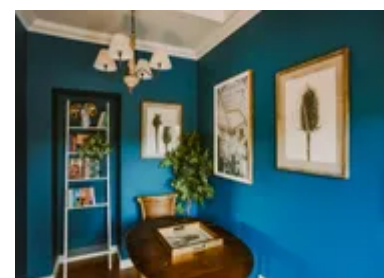
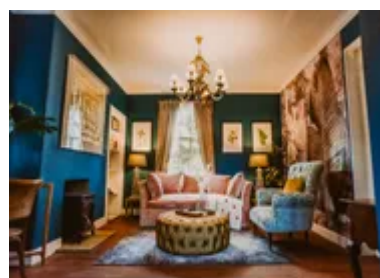
Those seeking local adventures can follow the coastal trail from Portpatrick to the evocative ruins of 16th-century Dunskey Castle. A 20-minute drive reveals the romantic Castle Kennedy Gardens (18km), complete with a delightful tearoom. Plant enthusiasts shouldn't miss Logan Botanical Garden (25km), while nearby Loch Ryan offers excellent opportunities for watersports, birdwatching and glimpses of its renowned oyster beds. The vibrant harbour town of Stranraer lies just 14km away.

Within the estate itself, a wealth of experiences awaits. Paths wind down to two untouched beaches, where you can look out for seals and dolphins. Meander through fairy-tale woodland trails, tackle a towering hedge maze or paddle across serene lochs by kayak or boat. The Victorian walled garden is a peaceful retreat, featuring exotic flora and a historic glasshouse. As spring approaches, the grounds burst into colour with snowdrops, camellias, azaleas and bluebells – a paradise for nature enthusiasts, with guided botanical walks also on offer throughout the year.

Indeed, guests can book a wide range of curated activities on the estate (additional fees apply), such as loch fishing, forest bathing, yoga, archery, clay pigeon shooting and atmospheric bonfires with marshmallows by the sea. Whether exploring the wild coast, spotting wildlife or simply unwinding in nature, this estate offers a magical escape steeped in beauty, peace and a profound sense of place.

## Local Amenities

Nearest Airport	<b>Glasgow Airport</b> (153.5 km)
Nearest Beach	<b>Portpatrick Beach</b> (3.5 km)
Nearest City	<b>Ayr</b> (96 km)
Nearest Ferry Port	<b>Cairnryan</b> (24.5 km)



Nearest Golf	<b>Dunseky Golf Club, Portpatrick (3 km)</b>
Nearest Shop	<b>Gillespie John &amp; Sons Ltd General Store (2.5 km)</b>
Nearest Supermarket	<b>Morrisons, Stranraer (14 km)</b>
Nearest Town	<b>Stranraer (14 km)</b>
Nearest Train Station	<b>Stranraer Train Station (14.5 km)</b>
Nearest Village	<b>Portpatrick (3 km)</b>

---

## What we love

- A whimsical 1-bedroom retreat with romantic boho interiors and superb attention to detail
- Soak under the stars in the private outdoor bathtub or unwind by the firepit in the lodge's garden with summer roses and wildflower views
- Thoughtful luxuries include organic bathrobes, Egyptian cotton linen and toiletries crafted from the estate's botanicals
- Part of a 2000-acre coastal estate, discover forest trails, lochs for kayaking, hidden waterfalls and wild beaches
- A superb range of services can be organised from bespoke catering and in-lodge massages to bonfires by the beach, loch fishing, guided walks and more
- Just a short drive to charming Portpatrick, known for its harbour pubs and scenic cliff walks

## What you should know...

- Little Sonata is located on the edge of a beautiful 2000-acre coastal estate, also home to an Edwardian castle and several upmarket lodges/apartments featured by Oliver's Travels. Please see Skylarke (<https://www.oliverstravels.com/britain-ireland/scotland/scottish-borders/skylarke/>), Crescendo (<https://www.oliverstravels.com/britain-ireland/scotland/scottish-borders/crescendo/>), Harpstone (<https://www.oliverstravels.com/britain-ireland/scotland/scottish-borders/harpstone/>), Resonance (<https://www.oliverstravels.com/britain-ireland/scotland/scottish-borders/resonance/>), Tempo Cottage (<https://www.oliverstravels.com/britain-ireland/scotland/scottish-borders/tempo-cottage/>), The Redwing (<https://www.oliverstravels.com/britain-ireland/scotland/scottish-borders/the-redwing/>) and Linnette (<https://www.oliverstravels.com/britain-ireland/scotland/scottish-borders/linnette/>).
- Guests of the estate can enjoy a range of wonderful services (for an additional charge) from bespoke catering to activities and experiences - please see the "Extras" tab for details.
- A car is strongly recommended for travelling to local amenities/attractions and for reaching parts of the estate.
- The estate's gardens and grounds are currently only open to residents and guests (other than the hedge maze that is occasionally open to the public on special occasions). The estate may be open to the general public in the future – watch this space for more information.

# Terms & Conditions

- **Security deposit:** No security deposit is required for this villa. Please be aware that guests are still required to leave the accommodation clean, tidy and in the same condition as on their arrival.
- **Arrival time:** 4:00 pm
- **Departure time:** 10:00 am
- **Energy costs included?:** Yes, included in the rental price
- **Linen & towels included?:** Yes, included in the rental price
- **Pets welcome?:** Up to two pets are welcome on request only and with prior agreement with the owner. If accepted, a pet supplement of £60 per pet per stay will apply.
- **Changeover day:** Flexible
- **End of stay cleaning:** Extra £175, payable to Oliver's Travels with the balance payment. Guests are required to leave the accommodation clean, tidy and in the same condition as on their arrival. Any extra cleaning, laundry, maintenance and/or rubbish disposal required will be charged against the security deposit.
- **Smoking Allowed?:** No smoking or vaping
- **Minimum stay:** 3 nights. 7 nights over Christmas.
- **Heating costs included?:** Yes, included in the rental price