

Harpstone

Region: Scottish Borders **Sleeps:** 4

Overview

Harpstone is a captivating bungalow-style lodge that embodies the quiet magic of Scotland's ever-changing seasons. Just steps from the twisting paths of the estate's hedge maze and with direct access to the walled garden, this delightful holiday abode invites you to experience nature's rhythm, all year round.

Originally built as a dairy house serving the estate's Edwardian castle, Harpstone has been lovingly restored to retain its century-old charm while offering thoughtful modern touches throughout. Inside, original murals by a Scottish landscape artist celebrate the estate's four seasons in sweeping brushstrokes across the walls. Underfloor heating runs throughout, while rain showers, organic bathrobes and an outdoor bath lend a luxurious touch to daily rituals.

The open-plan living space is awash with natural light, with generous views over the woodland. A woodburning stove anchors the room, where mid-century accents meet plush comfort in a modular sofa and curated vintage pieces. The open-plan kitchen and dining space is perfectly equipped for family meals or quiet mornings with coffee and birdsong.

Ideal for families or a small group of friends, Harpstone features two gorgeous bedrooms, each with its own ensuite. Every detail, from the high-quality bedding to the soft hues of the hand-painted walls, evokes a sense of calm and care.

Outdoors, the terrace captures some of the longest sun hours on the estate, making it a prime spot for leisurely breakfasts, barbecues or an afternoon of lounging. A secret gate opens into the estate's walled garden, where guests can roam amongst heritage blooms and hidden corners.

Set within an exceptional 2,000-acre coastal estate, Harpstone is perfectly placed for woodland walks, boating on the lochs or gathering for a beachside picnic. Guests can also choose from a range of curated experiences across the estate (available at an additional cost) including loch fishing, forest bathing, archery, guided walks and even shoreline bonfires complete with toasted marshmallows and hot chocolate.

For those seeking even more charm, the harbour village of Portpatrick lies just a short drive away, with its clifftop trails, cheerful pubs and postcard-perfect views.

Facilities

Historical Sites • Canoeing/Kayaking • Golf Nearby • Fishing • Walking/Hiking Paths • Boat Trips • Ideal for Kids • Special Offer • Has



Discount • Ideal for Teens • Pets on Request • Cots (Cribs) • Beach
Nearby • All Bedrooms En-Suite • Cottage • Parking Space • Wi-
Fi/Internet • BBQ • Rural Location • Washing Machine • Outstanding
Landscapes • Coffee Machine • Hairdryer • Outdoor Pursuit & Activities •
Tourist Towns & Villages • Tumble Dryer • Dishwasher • Microwave •
Smart TV • Working Fireplace/Woodburner • Heating • Ruins • Water
excursions/Boat trips • Catering Available • On-Site Concierge • Bathroom
Toiletries • Ideal for Babies & Toddlers • High Chair(s)

Interior & Grounds

Lodge Interiors

Ground Floor

- Open-plan living area with Smart TV and woodburning log fire
- Open-plan kitchen and dining area
- Bedroom with king-size double bed and en suite bathroom with rain shower
- Bedroom with two single beds and en suite bathroom with rain shower

Exterior

- Raised sun terrace with al-fresco dining table and outdoor hot tub
- Barbecue
- Enclosed garden (via steps)
- Private access to the estate's walled garden

Additional Facilities

- Radiant underfloor heating
- Sonos music speaker
- Organic slippers and bathrobes

Estate's Gardens and Grounds (2000-acre estate with other residences)

- Walled garden with Victorian glasshouse
- Woodland garden
- Hedge maze
- Flower collection
- Two secluded beaches
- Glen and two waterfalls
- Upper and lower loch
- Beech woodland with fairy doors
- Hiking trails (including coastal trail)



Location & Local Information

Along the untamed shores of southwest Scotland, this extraordinary 2,000-acre estate offers an immersive escape where dramatic landscapes and storied heritage intertwine. From the charming village of Portpatrick to the rugged cliffs beneath Killantringan Lighthouse, the estate unfolds in a tapestry of ancient forests, sparkling lochs and secluded beaches with sweeping views across the Irish Sea.

Within the estate, Harpstone enjoys a central location near the maze and with its own secret access to the walled garden. It's only a five-minute drive to the local village of Portpatrick (2.5km). This picturesque coastal village enchants with its colourful harbourfront, cosy cafés and friendly pubs and restaurants serving comforting dishes and local ales by the water's edge. Golfers will appreciate the close proximity of Dunskey Golf Course, just a short distance away.

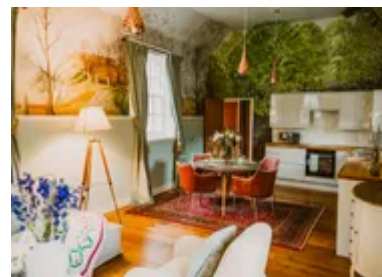
Adventure beckons just beyond, with a scenic coastal path from Portpatrick leading to the evocative ruins of 16th-century Dunskey Castle. Around a 20-minute drive away lies Castle Kennedy Gardens (18km), loved for its tranquil atmosphere and quaint tearoom. Plant enthusiasts will delight in a visit to Logan Botanical Garden (25km), while nearby Loch Ryan is a hotspot for watersports and nature watching, famed for its oyster beds and diverse birdlife. The lively port town of Stranraer is around 13km from the lodge.

Back to the estate itself, exploration never ends. Rugged trails wind toward wild beaches, ideal for glimpsing seals or dolphins, while magical woodland walks and serene lochs for kayaking or rowing provide endless discovery. The peaceful Victorian walled garden, with its rare plants and historic glasshouse, is a riot of colour throughout the year whilst spring brings blooming camellias, azaleas, rhododendrons and bluebells across the estate. Guided botanical tours are also on offer for those keen to learn more.

Guests may book a wide range of enriching experiences across the estate (at additional cost), from loch fishing and forest bathing to archery, clay pigeon shooting and atmospheric bonfires with marshmallows by the sea. Whether you're navigating coastal hiking trails, birdwatching in the woodlands or simply unwinding with a view, the estate offers a truly memorable stay that celebrates nature and serenity.

Local Amenities

Nearest Airport	Glasgow Airport (154 km)
Nearest Beach	Portpatrick Beach (2.5 km)
Nearest City	Ayr (94 km)
Nearest Ferry Port	Cairnryan (24 km)



Nearest Golf	Dunskey Golf Club, Portpatrick (2.5 km)
Nearest Shop	Gillespie John & Sons Ltd General Store (2.5 km)
Nearest Supermarket	Morrisons, Stranraer (13.5 km)
Nearest Town	Stranraer (13.5 km)
Nearest Train Station	Stranraer Train Station (14 km)
Nearest Village	Portpatrick (2.5 km)

What we love

- Originally a dairy house, now a beautifully restored lodge with bespoke murals celebrating Scotland's four seasons
- The terrace enjoys some of the longest sun hours on the estate – ideal for slow breakfasts, summer barbecues or simply soaking in the outdoor bath
- You can enjoy direct access to the estate's enchanting walled garden, just steps from the twisting hedge maze
- Venture further across the estate – come across ancient woodland, coastal trails, wild beaches, waterfalls and lochs for boating or paddle-boarding
- A wonderful range of services can be organised from bespoke catering and in-lodge massages to bonfires by the beach, loch fishing, guided walks and so much more
- Just 2km from Portpatrick's pretty harbour, cosy cafes and local pubs

What you should know...

- Harpstone is located on the edge of a beautiful 2000-acre coastal estate, also home to an Edwardian castle and several upmarket lodges/apartments featured by Oliver's Travels. Please see Skylarke (<https://www.oliverstravels.com/britain-ireland/scotland/scottish-borders/skylarke/>), Little Sonata (<https://www.oliverstravels.com/britain-ireland/scotland/scottish-borders/little-sonata/>), Crescendo (<https://www.oliverstravels.com/britain-ireland/scotland/scottish-borders/crescendo/>), Resonance (<https://www.oliverstravels.com/britain-ireland/scotland/scottish-borders/resonance/>), Tempo Cottage (<https://www.oliverstravels.com/britain-ireland/scotland/scottish-borders/tempo-cottage/>), The Redwing (<https://www.oliverstravels.com/britain-ireland/scotland/scottish-borders/the-redwing/>) and Linnette (<https://www.oliverstravels.com/britain-ireland/scotland/scottish-borders/linnette/>).
- Guests of the estate can enjoy a range of wonderful services (for an additional charge) from bespoke catering to activities and experiences - please see the "Extras" tab for details.
- A car is strongly recommended for travelling to local amenities/attractions and for reaching parts of the estate.
- The estate's gardens and grounds are currently only open to residents and guests (other than the hedge maze that is occasionally open to the public on special occasions). The estate may be open to the general public in the future – watch this space for more information.

Terms & Conditions

- **Security deposit:** No security deposit is required for this villa. Please be aware that guests are still required to leave the accommodation clean, tidy and in the same condition as on their arrival.
- **Arrival time:** 4:00 pm
- **Departure time:** 10:00 am
- **Energy costs included?:** Yes, included in the rental price
- **Linen & towels included?:** Yes, included in the rental price
- **Pets welcome?:** Up to two pets are welcome on request only and with prior agreement with the owner. If accepted, a pet supplement of £60 per pet per stay will apply.
- **Changeover day:** Flexible
- **End of stay cleaning:** Extra £175, payable to Oliver's Travels with the balance payment. Guests are required to leave the accommodation clean, tidy and in the same condition as on their arrival. Any extra cleaning, laundry, maintenance and/or rubbish disposal required will be charged against the security deposit.
- **Smoking Allowed?:** No smoking or vaping
- **Minimum stay:** 3 nights. 7 nights over Christmas.
- **Heating costs included?:** Yes, included in the rental price