

# Villa Shirley

Region: Los Angeles Sleeps: 6

## Overview

Hidden at the end of a quiet cul-de-sac just moments from Coldwater Canyon, Villa Shirley feels like a secret retreat tucked into the hills. The clean lines and angular elegance of Mid-Century Modern design meet warm, textured interiors in a home that balances sophistication with soul. As you enter, light pours through full-height windows, casting reflections across polished hardwood floors and revealing leafy canyon views in every direction.

The main living spaces flow effortlessly around a striking double-sided fireplace, creating natural zones for conversation, reading or simply sinking into the plush leather sofas. Beyond, a dining area and chic breakfast bar open into the showstopping kitchen, where premium Viking appliances and a minimalist palette offer both beauty and function. There's a sense of calm here, a place where even daily rituals feel elevated.

Each of the three bedrooms is a sanctuary in its own right, with crisp linens, generous proportions and thoughtful details. The master suite opens directly onto the terrace, where your private outdoor space awaits. Set against a backdrop of hillside greenery, the resistance pool offers both relaxation and invigoration, framed by natural stone paving and flanked by sun loungers and a shaded dining area.

Whether you're sipping a drink as the sun sets over the canyon or entertaining beneath the stars, Villa Shirley is designed for connection, comfort and quiet indulgence. Close to Beverly Hills yet far enough to feel truly away, it's the kind of place that leaves a lasting impression.

## Facilities

Go-Karting • Padel • Villa • Boat Trips • Cycling • Watersports • Walking/Hiking Paths • Ideal for Kids • Air-Con • Fishing • Wine Tasting • Private Pool • Special Offer • Has Discount • Wow Factor • Ideal for Teens • All Bedrooms En-Suite • Modern • <1hr to Airport • Parking Space • Wi-Fi/Internet • Lakes and Mountains • Washing Machine • Coffee Machine • Outstanding Landscapes • Hairdryer • Outdoor Pursuit & Activities • Tourist Towns & Villages • TV • Garage • Tumble Dryer • Dishwasher • Microwave • Smart TV • Satellite TV • Working Fireplace/Woodburner • Heating • New Villas 2025



# Interior & Grounds

## The Villa

### Ground Floor

- Garage

### First Floor

- Open plan living space
- Dining area
- Fully equipped, open kitchen
- Bar
- Breakfast area
- Separate toilet
- Bedroom 1: Double bed, ensuite
- Bedroom 2: Double bed
- Bedroom 3: Double bed
- Bathroom

### Exterior

- Private swimming pool
- Terrace
- Sun loungers
- Lounge furniture
- Outdoor dining area

### Additional Facilities

- Air-conditioning
- Accessible parking
- Coffee maker
- Dishwasher



# Location & Local Information

Villa Shirley is located in one of the most coveted pockets of Beverly Hills, nestled on a serene cul-de-sac just off Coldwater Canyon Drive. Here, you're surrounded by lush canyons and mature trees, yet only minutes from the energy of the city. This location offers a rare blend of privacy and convenience, making it the perfect base for exploring the best of Los Angeles.

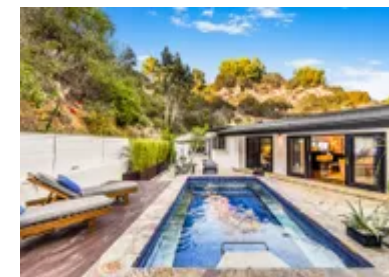
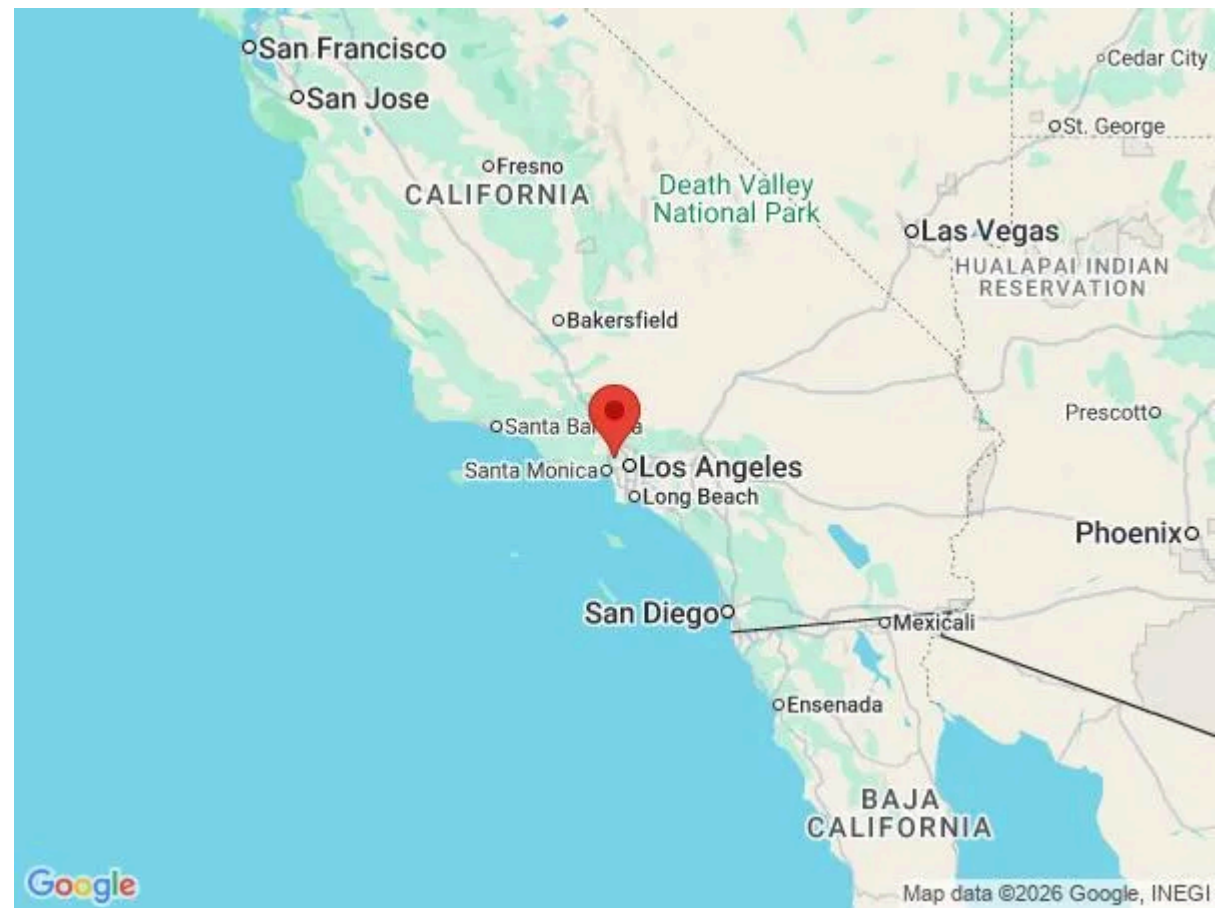
Within a short drive, you'll reach the iconic boutiques and restaurants of Rodeo Drive, as well as the cafes and high-end grocery stores of Beverly Glen. Just over the hill, Studio City's vibrant scene offers a fresh contrast, while a short scenic drive leads you into the heart of West Hollywood.

Nature lovers will appreciate the nearby hiking trails in Franklin Canyon and TreePeople Park, both ideal for early morning strolls or panoramic sunset hikes. Cultural highlights like The Getty and LACMA are within easy reach, along with world-class spas, music venues, and culinary destinations.

Despite its central location, Villa Shirley offers rare peace and seclusion. With canyon views as your backdrop and city life just moments away, this home gives you the freedom to dip in and out of LA's vibrant pulse, on your own terms.

## Local Amenities

Nearest Airport	<b>Los Angeles International Airport</b> (35 km)
Nearest Bar/Pub	<b>The Fleur Room</b> (6 km)
Nearest Beach	<b>Santa Monica Beach</b> (24 km)
Nearest Golf	<b>The Los Angeles Country Club</b> (8 km)
Nearest Restaurant	<b>BOA Steakhouse</b> (6 km)
Nearest Supermarket	<b>Pavilions</b> (8 km)
Nearest Town/City	<b>Beverly Hills</b> (6 km)



## What we love

- Mid-Century Modern elegance meets warm, inviting interiors flooded with natural light.
- Private outdoor space with a resistance pool and canyon views, perfect for evening entertaining!
- Prime Beverly Hills location with easy access to hiking, shopping, and iconic LA landmarks.

## What you should know...

- Pool lights are currently inoperable and scheduled for repair, thank you for your understanding.
- While the area is peaceful, the driveway is on a slope and may not suit all guests with limited mobility.

# Terms & Conditions

- **Security deposit:** \$1000 charged to client's credit card by Oliver's Travels as a pre-authorisation at least 2 weeks prior to arrival and refunded two weeks after departure, subject to full inspection.
- **Arrival time:** 16:00 - 16:00
- **Departure time:** 10:00
- **Energy costs included?:** Yes, included in the rental price.
- **Linen & towels included?:** Yes, included in the rental price.
- **Pets welcome?:** Not allowed.
- **Changeover day:** Flexible.
- **End of stay cleaning:** Standard changeover clean included in the price. Guests are required to leave the accommodation clean, tidy and in the same condition as on their arrival. Any extra cleaning, laundry, maintenance and/or rubbish disposal required will be charged against the security deposit.
- **Smoking Allowed?:** Smoking & Vaping not permitted.
- **Minimum stay:** 3 nights.
- **Tax:** Tax is included in the rental price,
- **Internet access?:** Yes, included in the rental price.