

Villa Soline

Region: Croatia Sleeps: 8

Overview

Villa Soline is a stylish and welcoming coastal retreat set in the peaceful village of Soline, close to Dubrovnik. Arranged across three levels, the villa offers four well-appointed en-suite bedrooms sleeping up to eight guests. The open-plan living and dining area is bright and inviting, paired with a fully equipped modern kitchen and large glass doors that allow natural light to pour in while showcasing views towards the sea. A private gym, Finnish sauna, games room and wine cellar provide comfortable spaces for relaxation and entertainment throughout the stay.

Outside, the villa opens onto a sunny terrace with plenty of space to lounge and unwind. A private heated swimming pool takes centre stage, surrounded by sun loungers and a dining area ideal for leisurely outdoor meals. From here, guests can enjoy lovely sea views, making it a wonderful spot to enjoy from morning coffee to evening drinks.

Villa Soline is just a short walk from the shoreline and nearby beaches, offering a peaceful coastal atmosphere. The historic Old Town of Dubrovnik and the charming town of Cavtat are both within easy driving distance, making it easy to combine quiet days by the sea with cultural sights, waterfront promenades and local dining.



Facilities

Walk to Village • Air-Con • Villa • Walking/Hiking Paths • Canoeing/Kayaking • Historical Sites • Boat Trips • Private Pool • Walk to Beach • Heated Pool • All Bedrooms En-Suite • Beach Nearby • <1hr to Airport • Walk to Restaurant • Wi-Fi/Internet • Seaview • BBQ • Washing Machine • Outstanding Landscapes • Coffee Machine • Outdoor Pursuit & Activities • Hairdryer • Tourist Towns & Villages • TV • Table Tennis • Games Room • Indoor Games • Gym/Fitness Room • Tumble Dryer • Dishwasher • Smart TV • Satellite TV • Sauna/Steam • Wine Cellar • Heating • High Chair(s)

Interior & Grounds

Villa Interior (252 m2)

Ground Floor

- Fully equipped kitchen
- Open plan living and dining area
- Guest WC

First Floor

- One bedroom with king sized bed and en-suite bathroom
- Two bedrooms with queen sized beds and en-suite bathroom
- One bedroom with two single beds and en-suite bathroom

Basement

- Second kitchen
- Well-stocked wine cellar
- Private gym and wellness area with a Finnish sauna
- Games room

Outside Grounds

- Private heated swimming pool (32 m2)
- Outdoor shower
- Terrace with sun loungers
- Outdoor dining area
- Barbecue

Facilities

- WI-FI
- Air conditioning
- Underfloor heating
- Stereo system
- Smart TV
- Coffee machine
- Ice maker
- Dishwasher
- Bread maker
- Air fryer
- Nespresso coffee machine
- Child high chair
- Washing machine
- Iron and board
- Dryer
- Cleaning supplies
- Vacuum cleaner
- Hairdryer
- Board games & Chess
- Darts
- Table tennis
- Play Station 5



Location & Local Information

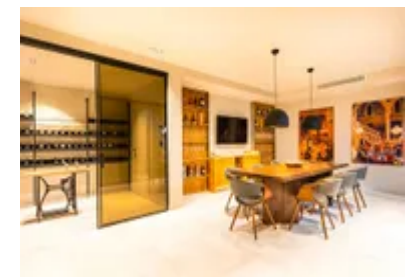
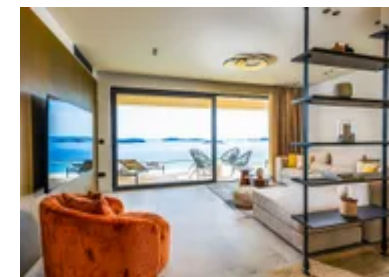
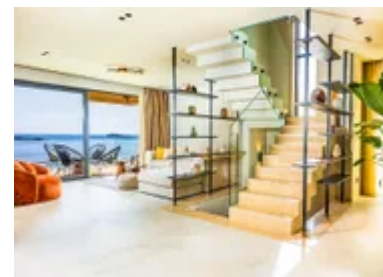
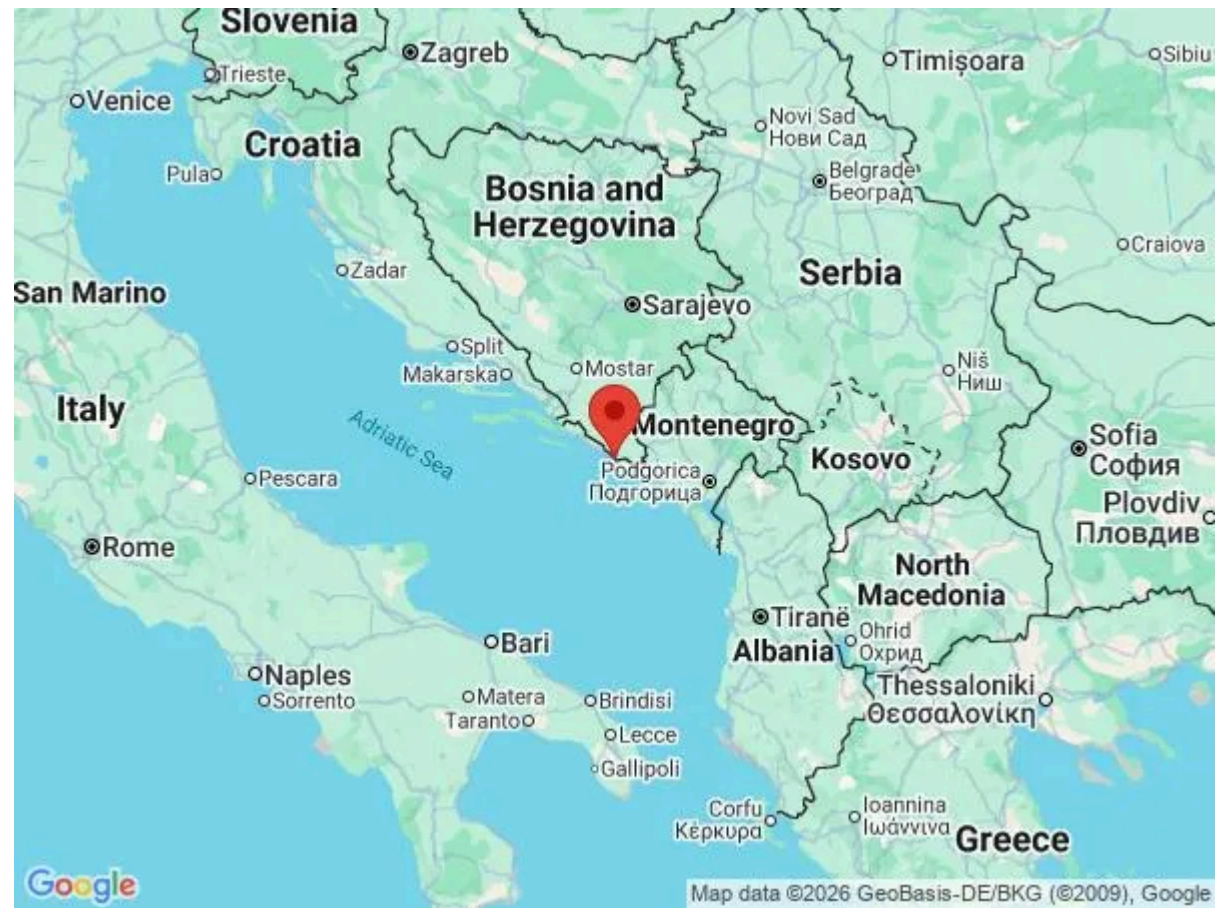
Villa Soline is set in Soline, a peaceful coastal village in Župa Dubrovačka, just east of Dubrovnik. The coastline here is dotted with pebble beaches and sheltered bays, where swimming, kayaking, and paddleboarding are part of everyday life.

While Soline offers a quiet escape with a few well-regarded local eateries, a wider array of supermarkets, boutiques, and diverse dining can be found in nearby Mlini, Srebreno, and Cavtat. This area perfectly balances the charm of traditional village life and historic churches with the vibrant energy of the Dubrovnik Riviera.

The historic Old Town of Dubrovnik is within easy reach for exploring the iconic city walls and waterfront dining. Additionally, Dubrovnik Airport is just a short drive away, ensuring a seamless arrival and departure for your stay.

Local Amenities

Nearest Airport	Dubrovnik Airport (10km)
Nearest Beach	Soline Beach (200m)
Nearest Supermarket	Studenac Market (100m)
Nearest Town	Cavtat (13km)
Nearest Village	Soline (200m)
Sightseeing	Dubrovnik Old Town (13km)



What we love

- Thoughtfully styled interiors with great on-site facilities, including a private gym, sauna and games room, offering plenty to enjoy without needing to leave the villa.
- A terrace oriented towards the sea, offering clear views and evening light that suit relaxed get-togethers at the end of the day.

What you should know...

- The villa is arranged across multiple levels, so stairs are part of the layout and may not be ideal for guests with limited mobility or very young children.
- Soline is built on a steep hillside, meaning access often involves steps or a short drive, which is typical for this part of the coast.
- The villa includes a well-stocked wine cellar; bottles consumed during your stay will be charged at an additional cost.

Terms & Conditions

- **Security deposit:** €2000 paid in cash to the owner upon arrival and refunded upon departure, subject to full inspection.
- **Arrival time:** 4.00 p.m.
- **Departure time:** 10.00 a.m.
- **Energy costs included?:** Yes.
- **Linen & towels included?:** Yes.
- **Pets welcome?:** Not allowed.
- **Other Ts and Cs:** Please note that published rates are only valid for the current year. Any bookings for subsequent years will be on request only and correct rates will be confirmed at the time of booking. Please note that your booking will only be confirmed once we have checked availability with the owner or their property manager.
- **Changeover day:** Flexible
- **End of stay cleaning available?:** Guests are required to leave the accommodation clean, tidy and in the same condition as on their arrival. Any extra cleaning, laundry, maintenance and/or rubbish disposal required will be charged against the security deposit.
- **Smoking Allowed?:** Smoking and vaping are not permitted.
- **Minimum stay:** 7 nights. All other durations on request.
- **Heating costs included?:** Yes.
- **Pool heating charge?:** Included. Please note that like all heated pools, pool heating and water temperature are reliant on weather and outside temperatures.
- **Tax:** Croata Visitors Tax is included.
- **Internet access?:** Wi-Fi internet access included.
- **Pool towels included?:** Yes.