

# Kelapa House

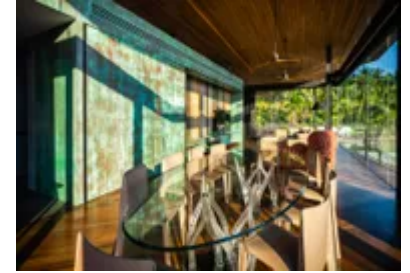
Region: Koh Samui Sleeps: 8

---

## Overview

Perched above the lush slopes of Chaweng Noi, Kelapa House is less a villa and more a design statement, an architectural sanctuary where sleek contemporary style meets complete seclusion. Created by renowned studio A49, this glass-clad home appears to float above the hillside, delivering cinematic, sea-to-sky views and an extraordinary sense of space across 2,800 sqm. From arrival, the villa feels suspended between jungle and ocean, offering a rare blend of privacy, perspective and effortless luxury.

A dramatic 17-metre infinity pool stretches toward the horizon, framing Chaweng Noi's white sands and the sapphire waters beyond. Inside, the interiors are curated like a gallery, with iconic designer furnishings, warm Balau wood, cool stone and clean-lined minimalism throughout. Open-plan living and dining spaces flow seamlessly onto terraces for sunrise coffees, sunset cocktails and chef-prepared barbecues under the stars, while four tranquil ensuite bedrooms provide private retreats behind floor-to-ceiling glass. For downtime, there's a private gym, workspace, steam room, spa and an entertainment den for movie nights, all supported by attentive, butler-style service. Kelapa House is made for guests who want Koh Samui at its most refined, quiet, elevated and unforgettable.



## Facilities

Golf Villa • Villa • Air-Con • Private Pool • Wellness • Maid Service  
Included • Chef/Cook Available • Ideal for Teens • Cots (Cribs) • All  
Bedrooms En-Suite • <1hr to Airport • Parking Space • Wi-Fi/Internet •  
Seaview • BBQ • Coffee Machine • Outdoor Pursuit & Activities • Tourist  
Towns & Villages • Laptop Friendly Workspace • Indoor Games •  
Gym/Fitness Room • Microwave • Safety Deposit Box • Smart TV • Pre-  
Stocked Fridge Available • Spa Treatments Available • Transfers Available  
• On-Site Concierge • Breakfast Included • High Chair(s) • Fenced  
Grounds

# Interior & Grounds

## Main House

### Ground Floor

- Shared pantry
- Open plan dining and lounge area

### First Floor

- Bedroom 1: King-size bed, work desk, ensuite bathroom
- Bedroom 2: King-size bed, work desk, ensuite bathroom
- Spacious movie room

### Annex

- Ground Floor
- Bedroom 3: King-size bed, work desk, daybed, ensuite bathroom
- Bedroom 4: King-size bed, work desk, daybed, ensuite bathroom

### Exterior Grounds

- Koi fish pond
- 17m Saltwater infinity saltwater pool (17m x 1.35m x 5.5m), with shallow end for kids
- Four sunbeds
- Outdoor dining area, large decks and a tropical fruit garden
- Private gym, sauna, steam room and a spa pavilion
- Parking for 2 cars

### Additional Facilities

- Nomad-friendly office suite with high speed internet
- Baby cot and highchair
- Air-conditioning
- High speed Wi-Fi
- LG sound system in the living room
- 75-inch Smart TV with Netflix, Disney Plus and Amazon Prime
- Sonos Bluetooth speakers
- Board games



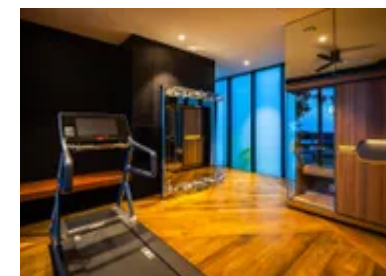
# Location & Local Information

Kelapa House sits high above Chaweng Noi, one of Koh Samui's most desirable hillside enclaves. The position is all about the view: a sweeping panorama across the turquoise Gulf of Thailand, with the curve of Chaweng Beach stretching north and distant islands silhouetted on the horizon. It feels wonderfully private up here, with a real sense of calm and elevation, yet you're never far from the island's energy when you want it.

In just 10–15 minutes, you can be in Chaweng town for beach clubs, markets, restaurants and nightlife, while nearby Chaweng Noi Beach offers a quieter, more exclusive alternative with soft sand and gentle shallows for swimming or paddleboarding. Wellness lovers will find yoga, spas and holistic centres along this coast, complemented by the villa's own steam room and spa for easy reset days at home. For exploring further afield, waterfalls, temples and jungle adventures are within reach, and highlights like the Big Buddha and Fisherman's Village are around 20–30 minutes away by car. But with such a compelling setting, whether you're working out, working remotely or simply watching the light change over the bay, Kelapa House often becomes the main event.

## Local Amenities

Nearest Airport	<b>Koh Samui Airport</b> (8 km)
Nearest Bar/Pub	<b>Seen Beach Club</b> (4 km)
Nearest Beach	<b>Chaweng Beach</b> (4 km)
Nearest Golf	<b>Royal Samui Golf</b> (2 km)
Nearest Restaurant	<b>Phensiri Thai Restaurant</b> (3 km)
Nearest Supermarket	<b>Lotus's Lamai</b> (8 km)
Nearest Town	<b>Koh Samui</b> (4 km)



## What we love

- Architect-designed villa with jaw-dropping glass and timber structure suspended above the jungle canopy.
- Spectacular 17m infinity pool with panoramic views of Chaweng Noi and the Gulf of Thailand!
- Fully staffed villa with steam room, private gym, spa, entertainment den and optional private chef.

## What you should know...

- The villa's hillside setting involves steps and elevated walkways; not ideal for those with limited mobility.
- The home's striking design includes floor-to-ceiling glass throughout; younger children may require supervision.
- While close to beaches and town, car transport is needed for most outings.

# Terms & Conditions

- **Security deposit:** Security deposit to be paid upon arrival to the villa. Note that the security deposit fee is dependent on the number of guests attending the event. This will be used at the Property Management Company's discretion to cover cost of service or replacement in case of breakages or damages to the property prior, during or after the event takes place. This amount is 100% refundable if there are no damages to the property.

- **Arrival time:** 15:00 - 17:00

- **Departure time:** 11:00

- **Energy costs included?:** Yes, included in the rental price.

- **Linen & towels included?:** Yes, included in the rental price.

- **Pets welcome?:** Not allowed.

- **Changeover day:** Flexible.

- **Smoking Allowed?:** Smoking & Vaping are not permitted.

- **Minimum stay:** 2 - 10 nights, depending on season. All other durations on request.

- **Heating costs included?:** Not available on this property.

- **Pool heating charge?:** Not available on this property.

- **Tax:** Tourist tax not applicable.

- **Internet access?:** Wi-Fi internet access included.

- **Pool towels included?:** Yes, included in the rental price.