

# The Verdizela Grove

Region: Portugal    Sleeps: 18

---

## Overview

Hidden among mature pines and wrapped in a lush private garden, The Verdizela Grove feels more like a retreat than a holiday home. Sprawled across a generous plot, this peaceful villa blends into its leafy surroundings with quiet charm and plenty of space for everyone to spread out, whether you're gathering for a celebration, a multigenerational holiday, or a break with a long guest list.

Inside, the atmosphere is warm and welcoming, with comfortable furnishings, classic touches and generous proportions throughout. The main living room, complete with fireplace and garden views, offers an inviting hub for downtime, while the separate dining room and fully fitted kitchen are made for easy mealtimes. With several lounges, a TV room, a meeting space and even a gym area, there's space to both relax and recharge.

Accommodation is flexible and thoughtful, spread across multiple levels and independent wings. The main house features a series of bright, air-conditioned bedrooms, including two suites, while the lower floor, two-bedroom flat and separate studio provide excellent privacy for extended families or friends travelling together. With sleeping space for up to eighteen guests, it's a house that flows comfortably whether you're all together or enjoying your own corner.

Outside, the scene is just as idyllic. The 12-metre private pool is fully secluded and surrounded by palms and greenery, with a sunbathing terrace and twelve loungers inviting you to soak up the sunshine. A covered summer kitchen and shaded dining porch set the tone for al fresco feasts, and the gentle sound of the breeze in the trees carries through from the neighbouring forest.

Gates open directly into a vast pine woodland, perfect for morning walks or nature adventures, while just a short drive away, the beaches of Costa da Caparica stretch along the Atlantic with golden sand and superb surf. Peaceful, authentic and wonderfully spacious, The Verdizela Grove offers a true escape on the edge of Lisbon's natural playground.



## Facilities

Canoeing/Kayaking • Padel • Surfing • Villa • Wellness • Boat Trips • Go-Karting • Sailing • Cycling • Tennis Nearby • Historical Sites • Watersports • Horse Riding • Walking/Hiking Paths • Golf Nearby • Air-Con • Wine Tasting • Private Pool • Cots (Cribs) • <1hr to Airport • Parking Space • Walk to Restaurant • Wi-Fi/Internet • BBQ • Washing Machine • Outstanding Landscapes • Coffee Machine • Hairdryer • Outdoor Pursuit & Activities • Tourist Towns & Villages • TV • Gym/Fitness



# Interior & Grounds

## The Villa

### Ground Floor

- Fitted kitchen
- Dining room
- Living room with fireplace, AC
- Covered porch
- WC

### Middle floor - 3 steps down

- Bedroom 1: Suite with two double beds 1.40 m x 2.00 m, bathroom with bath and shower, dressing room, AC
- Bedroom 2: Suite with double bed 1.60 m x 2.00 m, bathroom with bathtub, AC
- Bedroom 3: Double bed, 1.60 m x 2.00 m, AC
- Bedroom 4: Double bed, 1.60 m x 2.00 m, AC
- Bedroom 5: Twin beds 0.90 m x 2.00 m, AC
- Bathroom with bath and shower

### Lower Ground Floor

- Living/TV room
- Meeting room and gym area
- Bedroom 6: Suite with double bed 2.00 m x 2.00 m, bathroom with shower, AC
- WC
- Laundry room

### 2-bedroom flat - with separate entrance

- Kitchenette and lounge
- Bedroom 7: Suite with double bed 1.80 m x 2.00 m, bathroom with shower
- Bedroom 8: Double bed 1.60 m x 2.00 m
- AC in corridor

### Studio - with separate entrance

- Bedroom 9: Twin beds 0.90 m x 2.00 m that can be prepared as a double bed 1.80 m x 2.00 m, bathroom with shower

### Exterior

- Private swimming pool: 12 m x 4 m
- Covered porch with kitchen and dining area



- Masonry BBQ
- Bathroom with walk-in shower
- 2 porches with lounge area
- 12 sun loungers
- Vegetable garden and orchard, with gates giving access to the pine forest
- Private parking for 4 vehicles

**Additional Facilities**

- Air-conditioning
- Wi-Fi
- Washing machine

## Location & Local Information

Located in the peaceful residential neighbourhood of Verdizela, just south of Lisbon, The Verdizela Grove is perfectly placed for guests looking to combine forest walks, golden beaches, and the vibrant energy of city life, all within easy reach.

This leafy enclave is known for its spacious plots, relaxed pace and family-friendly feel. The villa itself backs directly onto a protected pine forest, inviting guests to step straight from the garden into a network of shaded trails, ideal for morning strolls, runs or simply getting lost in the stillness of nature. Just 700 metres away, you'll find a sports park and playground, as well as tennis and padel courts for those looking to stay active during their stay.

A short drive brings you to the dazzling coastline of Costa da Caparica. Praia da Fonte da Telha, less than 6km away, is one of the region's most beloved beaches, with long stretches of golden sand, crystal-clear waves and a cluster of beach bars perfect for sunset drinks. For hikers and birdwatchers, the Mata dos Medos wooden walkways offer panoramic views over the dunes and Atlantic beyond.

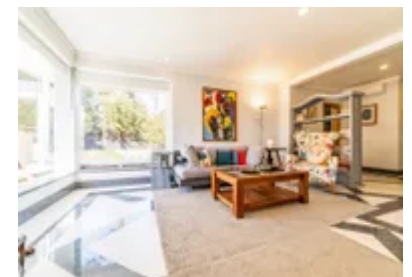
Families will enjoy visits to the Metropolitan Biodiversity Park just 2km away, where picnic spots, lakes, and educational trails offer a fun way to engage with the natural world. Golf enthusiasts are just minutes from Aroeira's renowned golf courses, and day trips to Setúbal or Sesimbra offer charming old towns, seafood restaurants and a taste of local tradition.

For daily conveniences, the surrounding area includes supermarkets, restaurants, cafés and a pharmacy within a 5-minute drive. There's also a nearby train station for easy trips into Lisbon, just 25km away. Whether you're exploring the city's cultural sights or wandering through Alfama with a pastel de nata in hand, the capital makes for a memorable day out.

Surrounded by greenery yet so well connected, The Verdizela Grove's location offers the best of both worlds, nature, beach and city all at your fingertips.

## Local Amenities

Nearest Airport	<b>Lisbon Airport (39km)</b>
Nearest Beach	<b>Praia da Fonte da Telha (6km)</b>
Nearest City	<b>Lisbon (25km)</b>
Nearest Golf	<b>PGA Aroeira No.2 (5km)</b>
Nearest Restaurant	<b>In local town (1km)</b>



Nearest Supermarket	In local town (3km)
Nearest Tennis	Municipal Verdizela Sports Park (1km)

## What we love

- Secluded, expansive garden backing onto a protected pine forest, perfect for nature walks straight from the villa.
- Great layout for large families or groups, with separate annexes and multiple social spaces!
- Just minutes from Fonte da Telha beach, Aroeira golf, and Lisbon's buzz.

## What you should know...

- The two-bedroom flat and studio have separate entrances, offering extra privacy but not directly connected to the main house.
- While some bedrooms are more simply furnished, the space and flexibility make it ideal for large groups.
- The area is peaceful and residential, so car hire is recommended for shops, dining and beach trips.
- Please note that this property does not accept groups of young people (up to 30 years old)

# Terms & Conditions

- **Security deposit:** €1200 charged to client's credit card as a pre-authorisation at least 2 weeks prior to arrival and refunded two weeks after departure, subject to full inspection.
- **Arrival time:** 4.00 p.m.
- **Departure time:** 10.00 a.m.
- **Energy costs included?:** Yes, included in the rental price.
- **Linen & towels included?:** Yes, included in the rental price.
- **Pets welcome?:** Not allowed.
- **Changeover day:** Flexible.
- **End of stay cleaning available?:** Standard changeover clean included in the price. Guests are required to leave the accommodation clean, tidy and in the same condition as on their arrival. Any extra cleaning, laundry, maintenance and/or rubbish disposal required will be charged against the security deposit.
- **Smoking Allowed?:** Smoking & vaping are not permitted.
- **Minimum stay:** 7 nights during peak season - 4 nights during all other periods.
- **Tax:** Portuguese Visitors Tax payable to Oliver's Travels at the time of balance payment (typically costs €1-€10 per adult per night - please enquire if exact amount is required).
- **Pool towels included?:** Not included. An additional €5 per day, payable to Oliver's Travels at time of balance payment.