

Studio Saint-Severin

Region: Paris Sleeps: 4

Overview

Studio Saint-Séverin sits in the very heart of the Latin Quarter on Paris' Left Bank. With views of Église Saint-Séverin, it offers a central base for experiencing authentic city life in *La Ville Lumière*.

Located just off the bustling Rue Saint-Séverin, this compact but charming Parisian apartment offers an open-plan layout with a lounge and kitchen corner as well as a double bed, partially partitioned via a curtain. Best suited to a couple, it also includes a sofa-bed for up to two additional guests if needed. The bathroom comes with a bath and overhead shower as well as a handy washing machine.

In the morning, light pours into the sleeping area, framing a charming view of Église Saint-Séverin and its church garden. One of the Left Bank's oldest churches, its bell tower dates back to the 12th century. Step outside and you're surrounded by classic Parisian life - restaurant terraces and bustling bistros, while the Sorbonne and Musée de Cluny are just a five-minute walk away.

Head the other way past Shakespeare and Company towards Île de la Cité, where the beautifully restored Cathédrale Notre-Dame de Paris awaits just 500m from your door. Enjoy coffee on a café terrace along Boulevard Saint-Michel, unwind in the leafy surroundings of Jardin du Luxembourg or explore further afield thanks to nearby metro stations and bus routes, all from the comfort of your own Latin Quarter *pied-à-terre*.



Facilities

City Homes & Apartments • Boat Trips • Cycling • Historical Sites • Special Offer • Has Discount • <1hr to Airport • Walk to Restaurant • Wi-Fi/Internet • Easy By Train • Washing Machine • Coffee Machine • Lift • Dishwasher • Microwave • Heating • Kid-friendly museum • Water excursions/Boat trips • Playground nearby

Interior & Grounds

Studio Apartment Interiors (36m2)

- Lounge area with sofa-bed and books
- Open-plan kitchen, well-equipped
- Open-plan bedroom (partly partitioned from lounge) with double bed, desk and window with church view
- Bathroom with bath/shower, hand basin and washing machine



Location & Local Information

Located beside the historic Église Saint-Séverin, Studio Saint-Séverin offers guests a privileged stay in the heart of Paris's enchanting Latin Quarter. Step outside the building's door and gaze upon the Gothic splendour of Saint-Séverin itself, one of the oldest churches on the Left Bank, famed for its stained-glass windows, historic belltower and impressive architecture.

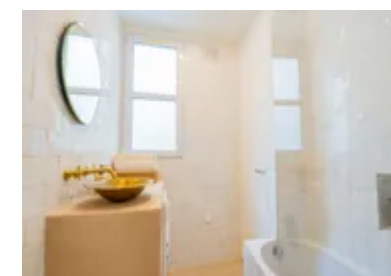
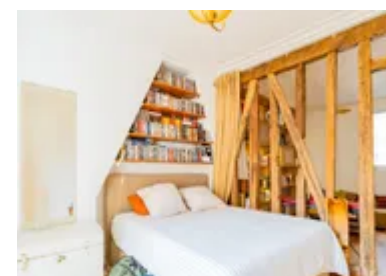
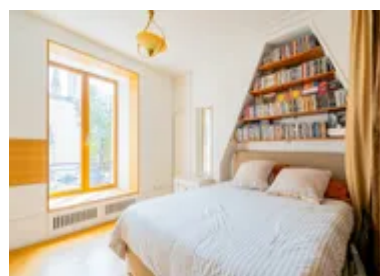
The apartment is on a lane just off Rue Saint-Séverin, with a restaurant terrace on your doorstep as well as cafes, bookshops and bistros just around the corner. The area hums with student energy and literary charm, just moments from the Sorbonne and a short stroll to the Seine's iconic riverside. Lose yourself in the winding streets of the Latin Quarter, where every corner reveals a snippet of Parisian heritage, from café terraces to centuries-old façades and lively jazz bars.

A gentle walk south brings you to the famous Jardin du Luxembourg, a tranquil haven of tree-lined promenades, ornamental fountains and manicured lawns – ideal for an afternoon picnic or a quiet read under the Parisian sun. Also nearby are many of the Left Bank's cultural gems, including the Panthéon (800m), Musée de Cluny (350m) and the Shakespeare and Company bookshop (220m). Île de la Cité and the magnificent Notre-Dame Cathedral is less than 500m on foot.

With Cluny-La Sorbonne Metro station two minutes away and excellent bus connections nearby, exploring the wider city couldn't be easier. Whether you're heading to the Marais, Montmartre or the Musée d'Orsay, Studio Saint-Séverin places the best of Paris effortlessly at your fingertips.

Local Amenities

Nearest Airport	Paris Orly (14km)
Nearest Airport 2	Paris Charles de Gaulle (32km)
Nearest Bar/Pub	In the neighbourhood (Very short walk)
Nearest City	Paris (In the city centre)
Nearest Restaurant	In the neighbourhood (Below the apartment)
Nearest Supermarket	Carrefour City (Within 300m)
Nearest Train Station	Saint-Michel métro (Within 200m)



What we love

- This cosy *pied-à-terre* is ideal for guests wishing to immerse themselves in Paris' trendy Left Bank
- Admire beautiful views of Église Saint-Séverin from your bedroom window
- A well-equipped kitchen makes self-catering a breeze or stroll to restaurant and bistros on your doorstep
- Just off the bustling Rue Saint-Séverin, you are in the heart of the Latin Quarter, between Sorbonne and Notre-Dame Cathedral

What you should know...

- The studio-style open-plan apartment is better suited to a couple due to its compact size but there is a sofa-bed for an additional 1-2 guests if required.

Terms & Conditions

- **Security deposit:** €650 charged to client's credit card before arrival and refunded two weeks after departure, subject to full inspection.
- **Arrival time:** 3.00 p.m.
- **Departure time:** 11.00 a.m.
- **Energy costs included?:** Yes.
- **Linen & towels included?:** Yes.
- **Pets welcome?:** Not allowed.
- **Other Ts and Cs:** Weddings, stag/hen parties and any special events are not allowed.
- **Changeover day:** Flexible.
- **End of stay cleaning available?:** Extra €85, payable to Oliver's Travels with the balance payment. Guests are required to leave the accommodation clean, tidy and in the same condition as on their arrival. Any extra cleaning, laundry, maintenance and/or rubbish disposal required will be charged against the security deposit.
- **Smoking Allowed?:** Not allowed.
- **Insurance:** Guests are required to be in possession of a valid insurance policy, which covers them for cancellations, loss of personal belongings, personal liability and any accidental damage caused during their stay.
- **Minimum stay:** 3 nights.
- **Heating costs included?:** Yes.
- **Tax:** Paris city tax is €5.20 per person, per night. City tax is not included in the rental rate and is payable locally.