

La Belle Volontaires

Region: Paris Sleeps: 4

Overview

The beautifully renovated La Belle Volontaires offers a welcoming base in the heart of Paris's 15th arrondissement. Set within a classic Haussmannian building, this attractive residence combines architectural elegance with modern touches, creating a refined city holiday abode for up to 4 guests.

A generous open-plan living-dining area invites relaxed mornings with coffee or restful evenings unwinding after a day exploring the capital. With its wooden flooring, marble dining table and feature fireplace, we love the blend of traditional furnishings and contemporary design. The open kitchen makes home dining a pleasure, featuring a range of sleek appliances.

There are two bedrooms, both with king-size doubles, one with an elegant window and good wardrobe space, the other slightly smaller and simpler in style. An en suite shower room plus an additional WC make La Belle Volontaires ideal for a couple, small family or friends.

Located on a typical Parisian street just a minute's walk from Volontaires metro station (line 12) and 400m from Pasteur (line 6), the apartment ensures seamless access across the city. Whether heading to Saint-Germain, the Eiffel Tower or Montmartre, Paris is yours to discover with ease.

The surrounding neighbourhood offers a quintessentially Parisian lifestyle. You'll find *boulangeries*, shops and brasseries just a few steps away. With iconic landmarks such as the Tour Montparnasse, the Musée Rodin, Champ de Mars and the Luxembourg Gardens all within half an hour on foot, the location strikes a perfect balance between convenience and charm in the City of Light.

Facilities

City Homes & Apartments • Boat Trips • Cycling • Historical Sites • Ideal for Kids • Special Offer • Has Discount • Ideal for Teens • <1hr to Airport • Walk to Restaurant • Wi-Fi/Internet • Easy By Train • Washing Machine • Hairdryer • TV • Lift • Dishwasher • Microwave • Heating • Kid-friendly museum • Water excursions/Boat trips • Playground nearby



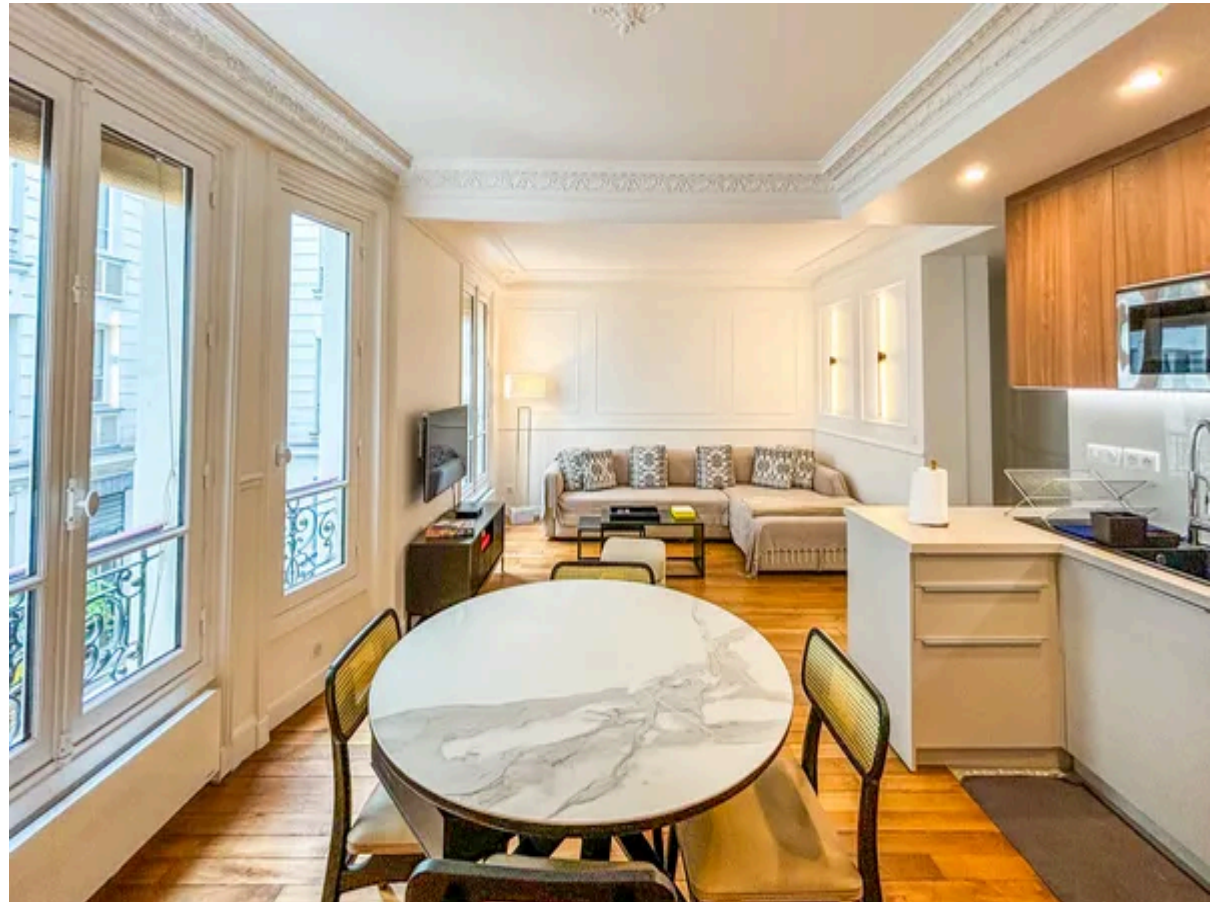
Interior & Grounds

Apartment Interiors (58m2)

- Open-plan living area with sofa and cable TV
- Open-plan well-equipped kitchen area with dining table
- Bedroom with king-size double bed and en suite bathroom with Italian shower, hand basin and toilet
- Smaller bedroom with king-size double bed
- Separate WC

Additional Facilities

- Lift (in building)



Location & Local Information

Located in a classic Haussmannian building in the 15th arrondissement, La Belle Volontaires offers guests a quintessential Parisian stay with great access to the city's sights.

Step outside and discover a lively district lined with *boulangeries*, shops, traditional cafés and brasseries. Whether you're picking up your morning croissant from the bakery just a few steps away or enjoying a glass of wine at a corner café-bar, the area is brimming with everyday Parisian life. A small well-stocked supermarket and a pharmacy are also nearby, ensuring everything you need is close at hand.

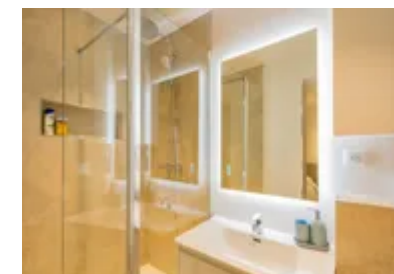
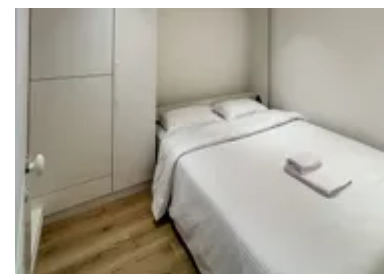
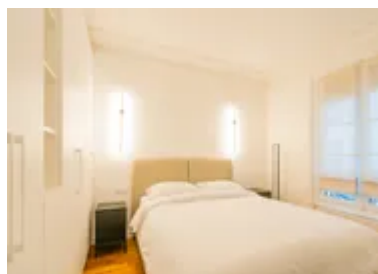
For sightseeing, you're ideally placed to walk or cycle to some of Paris's cultural gems. The striking Tour Montparnasse (1.2 km) offers panoramic city views, while the beautiful Jardin du Luxembourg (2km) invite atmospheric afternoon strolls among fountains and tree-lined promenades.

The top end of Champ de Mars (1.6km) is just over 20 minutes on foot with its lawns, play areas and incredible views of the Eiffel Tower (2.2km). Meanwhile, art lovers will appreciate the elegant Musée Rodin (2.1km), home to masterpieces such as The Thinker.

Just a minute from Métro Volontaires station (line 12) and 400m from Pasteur (line 6), this well-connected location places you within easy reach of many other of Paris's world-famous landmarks while offering the experience and charm of a local neighbourhood.

Local Amenities

Nearest Airport	Paris Orly (15km)
Nearest Airport 2	Paris Charles de Gaulle (36km)
Nearest Bar/Pub	In the neighbourhood (Short walk)
Nearest City	Paris (In the city)
Nearest Restaurant	In the neighbourhood (Very short walk)
Nearest Supermarket	Franprix (Within 200m)
Nearest Train Station	Volontaires métro (50m)



What we love

- Set in a classic Haussmannian building, this chic apartment blends period elegance with stylish modern touches
- Enjoy a truly Parisian experience, with cafés, bakeries and brasseries right on your doorstep in the 15th arrondissement
- Walk to the Musée Rodin, Luxembourg Gardens or Champ de Mars in under 30 minutes
- Close to Volontaires metro station, enjoy easy connections to the many iconic sights of Paris

What you should know...

- Sleeping up to 4 guests, there are two bedrooms, one with an en suite shower room, and another that is slightly smaller and simpler in style.

Terms & Conditions

- **Security deposit:** €650 charged to client's credit card before arrival and refunded two weeks after departure, subject to full inspection.
- **Arrival time:** 3.00 p.m.
- **Departure time:** 11.00 a.m.
- **Energy costs included?:** Yes.
- **Linen & towels included?:** Yes.
- **Pets welcome?:** Not allowed.
- **Other Ts and Cs:** Weddings, stag/hen parties and any special events are not allowed.
- **Changeover day:** Flexible.
- **End of stay cleaning available?:** Extra €95, payable to Oliver's Travels with the balance payment. Guests are required to leave the accommodation clean, tidy and in the same condition as on their arrival. Any extra cleaning, laundry, maintenance and/or rubbish disposal required will be charged against the security deposit.
- **Smoking Allowed?:** Not allowed.
- **Insurance:** Guests are required to be in possession of a valid insurance policy, which covers them for cancellations, loss of personal belongings, personal liability and any accidental damage caused during their stay.
- **Minimum stay:** 3 nights.
- **Heating costs included?:** Yes.
- **Tax:** Paris city tax is €5.20 per person, per night. City tax is not included in the rental rate and is payable locally.