

# La Vue Eiffel

**Region:** Paris   **Sleeps:** 4

---

## Overview

Crowned with a view few ever forget, La Vue Eiffel offers almost a front-row seat to the city's most iconic landmark. From the moment you arrive, the Eiffel Tower commands your attention - rising before you and glowing at night through floor-to-ceiling windows, turning every morning coffee or evening glass of wine into a moment to savour.

Perched on the top floor of a residential Parisian building with lift access, this elegant city apartment accommodates up to four guests in style. The interiors are light-filled and thoughtfully designed. In the spacious living and dining space, the Eiffel Tower becomes a living work of art, perfectly framed by large windows. The best view is from the dining table – imagine romantic meals or family feasts with this incredible view, especially as the tower twinkles at night.

La Vue Eiffel sleeps 2-4 guests across its double bedroom and a good-quality sofa-bed in the lounge. A modern shower room (including handy laundry facilities), high-speed Wi-Fi and air conditioning in both the bedroom and lounge ensure every detail is in place for a seamless stay.

A short walk from the leafy lawns of the Champ-de-Mars and the Eiffel Tower itself, the apartment places you at the very heart of Paris's 15th arrondissement. Stroll to nearby patisseries, sip wine at a local café or wander along the Seine as the tower sparkles into the night.

For those seeking a Paris stay with unmatched views, La Vue Eiffel delivers a setting as extraordinary as the city itself.



## Facilities

City Homes & Apartments • Boat Trips • Cycling • Air-Con • Historical Sites • Ideal for Kids • Special Offer • Has Discount • Ideal for Teens • Pets on Request • <1hr to Airport • Walk to Restaurant • Wi-Fi/Internet • Easy By Train • Washing Machine • Coffee Machine • Hairdryer • TV • Lift • Laptop Friendly Workspace • Tumble Dryer • Dishwasher • Microwave • Heating • Kid-friendly museum • Water excursions/Boat trips • Playground nearby

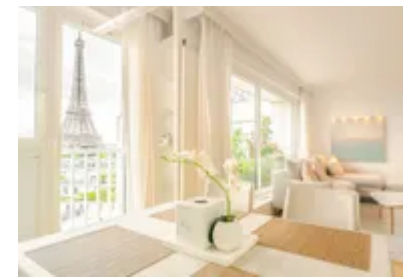
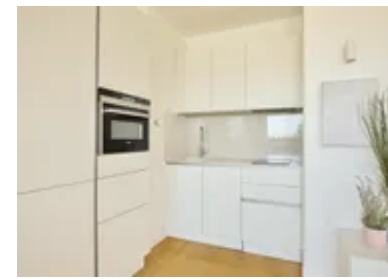
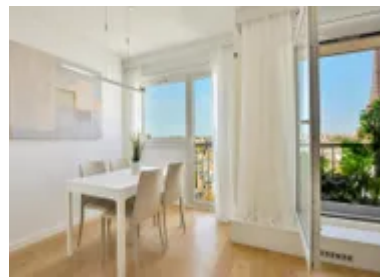
# Interior & Grounds

## Apartment Interiors (on top floor of building)

- Open-plan living area with air-conditioning, TV, double sofa-bed and large window with Eiffel Tower view. Door opens to small balcony with Eiffel Tower view
- Open-plan corner kitchen, well-equipped including oven, microwave, cooker, fridge, coffee machine, kettle and toaster
- Open-plan dining area with table and chairs and door opening to Juliet balcony with Eiffel Tower view
- Separate WC
- Bedroom (13.76m<sup>2</sup>) with double bed, air-conditioning and wardrobe space.
- En suite bathroom with Italian shower, sink and laundry area with washer and dryer

## Additional Facilities

- Building lift



# Location & Local Information

In the 15th arrondissement, La Vue Eiffel is on the top floor of a typical residential building, just a short walk from the iconic Champ-de-Mars. The surrounding neighbourhood brims with lively cafés, restaurants and shops - everything you need for an authentic Parisian lifestyle.

The tree-lined Champ-de-Mars (within 350m) stretches beneath the Eiffel Tower's watchful gaze, offering a perfect spot for morning strolls, picnics or simply admiring one of the world's most famous landmarks. With the Eiffel Tower just a few minutes on foot, you can experience its grandeur by day and its glittering lights by night, all practically on your doorstep. Book ahead for tickets to visit the tower by lift or stairs.

The apartment enjoys superb transport connections, making it an ideal base for exploring the city. Bir-Hakeim and La Motte-Picquet – Grenelle metro stations are both just a short walk away, the city has good bus services from Champ-de-Mars and you can also hire bikes to explore the neighbourhood and beyond.

In just a short metro, bus or cycle ride, guests can reach some of the city's most treasured sights. Art lovers will appreciate the Musée d'Orsay's world-class Impressionist collection, only 2.5km away, while the legendary Louvre lies just beyond at 3.5km. The majestic Arc de Triomphe and the peaceful Jardin du Luxembourg are both around 3km away.

## Local Amenities

Nearest Airport	Paris Orly (16km)
Nearest Airport 2	Paris Charles de Gaulle (34km)
Nearest Bar/Pub	Local neighbourhood (Very short walk)
Nearest City	Paris (In the city)
Nearest Restaurant	Local neighbourhood (Very short walk)
Nearest Supermarket	U Express et Drive (Within 300m)
Nearest Train Station	La Motte-Picquet-Grenelle métro (400m)
Sightseeing	Eiffel Tower (700m)



## What we love

- Unrivalled Eiffel Tower views – magical by day, unforgettable at night
- Stylish top-floor apartment with lift access and modern, light-filled interiors
- Air conditioning, high-speed Wi-Fi and laundry facilities ensure a comfortable city stay
- Just a short walk from the Eiffel Tower and the Champ-de-Mars, perfect for riverside strolls and picnic lunches
- Explore the charm of the 15th arrondissement with local cafés, patisseries and the Seine all nearby

## What you should know...

- La Vue Eiffel sleeps 2-4 guests with one double bedroom and a good quality sofa-bed in the lounge area.
- Air-conditioning is featured in the bedroom and lounge area.

# Terms & Conditions

- **Security deposit:** €650 charged to client's credit card before arrival and refunded two weeks after departure, subject to full inspection.
- **Arrival time:** 3.00 p.m.
- **Departure time:** 11.00 a.m.
- **Energy costs included?:** Yes.
- **Linen & towels included?:** Yes.
- **Pets welcome?:** On request only and with prior agreement with the owner.
- **Other Ts and Cs:** Weddings, stag/hen parties and any special events are not allowed.
- **Changeover day:** Flexible.
- **End of stay cleaning available?:** Extra €80, payable to Oliver's Travels with the balance payment. Guests are required to leave the accommodation clean, tidy and in the same condition as on their arrival. Any extra cleaning, laundry, maintenance and/or rubbish disposal required will be charged against the security deposit.
- **Smoking Allowed?:** Not allowed.
- **Other 2:** Air-conditioning is featured in the bedroom and lounge area.
- **Insurance:** Guests are required to be in possession of a valid insurance policy, which covers them for cancellations, loss of personal belongings, personal liability and any accidental damage caused during their stay.
- **Minimum stay:** 2 nights.
- **Heating costs included?:** Yes.
- **Tax:** Paris city tax is €5.20 per person, per night. City tax is not included in the rental rate and is payable locally.