

L'Atelier Latin

Region: Paris Region Sleeps: 6

Overview

Infused with contemporary elegance, L'Atelier Latin is an impressive gem in the very heart of Paris. Once an artist's studio, this Left Bank apartment has been reimagined by an architect to offer a superb sense of style and comfort. From the moment you step inside, curated design details set the tone for a refined city stay.

With an expansive window overlooking the vibrant square below, the open-plan living and dining space is impressive with chic furnishings and bold artwork. A modern fully equipped kitchen ensures every culinary need is met, whether you're preparing a family breakfast with croissants from a neighbourhood *boulangerie* or a dinner with friends.

Two gorgeous bedrooms each offer queen-size beds, ample storage and private access to marble-clad bathrooms with walk-in showers (one en suite). With high-quality linens and an atmosphere of understated luxury, L'Atelier Latin has been designed for guests who value both comfort and character. A sofa-bed in the open-plan lounge allows up to 6 guests to stay here.

Perfectly placed in the Latin Quarter, close to the banks of the Seine, this is Paris at its most soulful. From your doorstep, step into the rhythm of local life with cafés spilling onto the square, bookshops tucked into nearby narrow lanes and the majestic spires of Notre-Dame rising just minutes away. Whether exploring on foot or hopping on the nearby metro, the city is yours to discover.

Facilities

City Homes & Apartments • Air-Con • Boat Trips • Cycling • Ideal for Kids • Historical Sites • Special Offer • Has Discount • Ideal for Teens • <1hr to Airport • Walk to Restaurant • Easy By Train • Washing Machine • Coffee Machine • TV • Dishwasher • Microwave • Smart TV • Kid-friendly museum • Water excursions/Boat trips • Playground nearby



Interior & Grounds

Apartment Interiors (first floor, via stairs only)

- Open-plan lounge and dining area with air-conditioning, large windows, sofa-bed, large-screen TV, wall-mounted speakers, modern fireplace and marble dining table
- Open kitchen, well-equipped including induction hob, oven/microwave, dishwasher, kettle, toaster and Nespresso machine
- Hallway with storage
- Master bedroom with queen-size double bed, built-in wardrobe and marble en suite shower room with walk-in Italian shower, hand basin and toilet
- Bedroom with queen-size bed and built-in wardrobe
- Shower room with walk-in Italian shower, hand basin and toilet
- Laundry room with washing machine and ironing facilities



Location & Local Information

Set on a leafy and bustling square in Paris' iconic Latin Quarter, L'Atelier Latin offers a truly immersive Parisian experience. Perched directly above a café-bar with outdoor seating, you are surrounded by the authentic hum of local life. This atmospheric setting captures the spirit of the Left Bank – cultured, bohemian and vibrant.

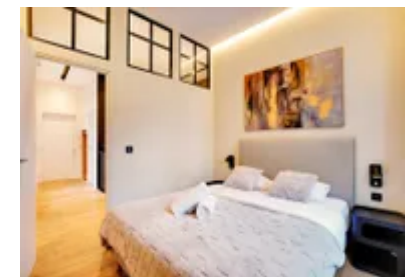
Just steps from Saint-Michel metro station, the apartment provides seamless access to the city's most celebrated sights. Yet many of Paris' treasures lie just a short walk away. Within moments, you can stroll to the banks of the Seine, cross Pont Saint-Michel and explore the majestic Île de la Cité, home to the legendary Notre-Dame Cathedral, just over 500m from your door.

Wander through the Latin Quarter's cobbled lanes, lined with bookshops and bistros, or soak up the café culture on Place Saint-Germain des Prés, only a 10-minute walk away. For green escapes, the elegant Jardin du Luxembourg is just 800m south, perfect for a morning jog or a peaceful afternoon beneath the chestnut trees.

Those with a passion for history and art are spoilt for choice. The imposing Panthéon is 1km away, while a stroll across Le Pont Neuf brings you to the world-renowned Louvre Museum and the refined beauty of the Jardin des Tuileries.

Local Amenities

Nearest Airport	Paris Orly (15km)
Nearest Airport 2	Paris Charles de Gaulle (32km)
Nearest Bar/Pub	On the square below the apartment (0km)
Nearest City	Paris (In the city centre)
Nearest Restaurant	On the square below the apartment (0km)
Nearest Supermarket	Small city supermarket (Within 150m)
Nearest Train Station	Saint-Michel métro (Very short walk)
Sightseeing	Notre-Dame Cathedral (500m)



What we love

- Former artist's studio reimagined with architectural flair and contemporary style
- Light-filled open-plan living space with striking artwork and views over a lively Left Bank square
- Two gorgeous bedrooms with queen-size beds, each with its own marble-clad bathrooms with walk-in Italian showers
- Located in the Latin Quarter, steps from cafés, bookshops and the banks of the Seine
- It's an easy stroll to Île de la Cité, home to the iconic Notre-Dame Cathedral, or walk over the romantic Pont Neuf to reach Le Louvre in just 20 minutes

What you should know...

- L'Atelier Latin sleeps 4-6 guests across two double bedrooms and a sofa-bed in the lounge.
- Air-conditioning is featured in the living area only.
- The apartment is located on a leafy square in the vibrant Latin quarter, on the first floor directly above a café-bar with general city life (and its usual noise) below you.
- Please note that exterior renovation work is currently underway on the building – this may result in scaffolding in front of some of the windows and daytime noise (no work should take place in the evenings/night or at the weekend).

Terms & Conditions

- **Security deposit:** €1000 charged to client's credit card before arrival and refunded two weeks after departure, subject to full inspection.
- **Arrival time:** 3.00 p.m.
- **Departure time:** 11.00 a.m.
- **Energy costs included?:** Yes.
- **Linen & towels included?:** Yes.
- **Pets welcome?:** Not allowed.
- **Other Ts and Cs:** Weddings, stag/hen parties and any special events are not allowed.
- **Changeover day:** Flexible.
- **End of stay cleaning available?:** Extra €200, payable to Oliver's Travels with the balance payment. Guests are required to leave the accommodation clean, tidy and in the same condition as on their arrival. Any extra cleaning, laundry, maintenance and/or rubbish disposal required will be charged against the security deposit.
- **Smoking Allowed?:** Not allowed.
- **Other 2:** Air-conditioning is featured in the living area only.
- **Insurance:** Guests are required to be in possession of a valid insurance policy, which covers them for cancellations, loss of personal belongings, personal liability and any accidental damage caused during their stay.
- **Other 3:** Please note that exterior renovation work is currently underway on the building – this may result in scaffolding in front of some of the windows and daytime noise (no work should take place in the evenings/night or at the weekend).
- **Minimum stay:** 2 nights.
- **Heating costs included?:** Yes.
- **Tax:** Paris city tax is €5.20 per person, per night. City tax is not included in the rental rate and is payable locally.