

# The Redwing

Region: Scottish Borders   Sleeps: 4

---

## Overview

The Redwing is a spacious and beautifully appointed lodge set within its own walled garden on an exceptional Scottish estate, offering a refined escape for up to four guests. Designed with rich textures and thoughtful detail, this two-bedroom retreat blends contemporary comfort with a calm, timeless atmosphere. Sheltered within garden walls and surrounded by established planting, the lodge feels wonderfully private, while the wider estate provides a sense of scale and setting that elevates the experience beyond a traditional countryside stay.

Inside, the living spaces are warm and inviting, with underfloor heating and an open fireplace providing comfort throughout the year. The open-plan layout allows the kitchen, dining area and sitting room to flow naturally together, making it easy to spend time as a group while still enjoying a sense of space. The kitchen is well equipped for everyday cooking, while the seating area encourages slow evenings by the fire. Both bedrooms are generously sized and each benefits from its own ensuite bathroom, offering comfort and flexibility for families or two couples travelling together.

Outside, The Redwing enjoys an enclosed garden that feels both peaceful and generous in scale. Outdoor seating areas invite time spent in the fresh air, while a private outdoor bath adds a memorable element, offering a rare opportunity to relax beneath open skies in complete seclusion. Beyond the garden walls, the estate opens out into woodland, lawns and landscaped grounds, with paths that encourage gentle exploration and moments of discovery close to home.

Whether you are looking for a comfortable base for exploring the estate or simply a place to slow down and reconnect, The Redwing offers a carefully balanced retreat where design, privacy and an outstanding natural setting come together with ease.

## Facilities

Walking/Hiking Paths • Romantic • Golf Nearby • Fishing • Historical Sites  
• Wellness • Ideal for Kids • Special Offer • Has Discount • Ideal for Teens  
• Pets on Request • Beach Nearby • All Bedrooms En-Suite • Cottage •  
Wi-Fi/Internet • Country Estate • BBQ • Rural Location • Washing Machine  
• Outstanding Landscapes • Hairdryer • Tourist Towns & Villages •  
Microwave • Smart TV • Heating • Ruins • Water excursions/Boat trips •  
Catering Available • On-Site Concierge • Bathroom Toiletries



# Interior & Grounds

## Lodge Interior:

### Ground floor

- Living area: Open-plan living space with sofa seating
- Dining area: Dining table with seating for four
- Fully-equipped kitchen for self-catering

### First floor

- Bedroom 1: Double bed, ensuite bathroom with shower
- Bedroom 2: Double bed, ensuite bathroom with shower

### Outside Grounds

- Private walled garden
- Outdoor bath
- Outdoor seating areas
- Garden space with planting and lawn

### Additional Facilities

- Underfloor heating
- Open fireplace



# Location & Local Information

The Redwing is set within expansive private grounds on Scotland's southwest coast, part of a remarkable estate defined by gardens, woodland and a dramatic coastal landscape. The lodge's position within a walled garden creates a strong sense of seclusion, while the surrounding grounds offer freedom to roam through carefully maintained paths, open spaces and quieter corners shaped by nature. The result is a setting that feels both sheltered and wonderfully expansive.

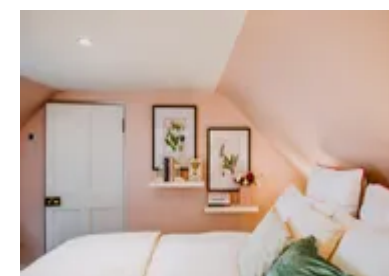
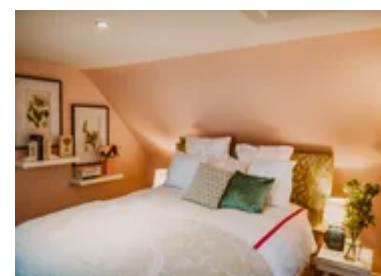
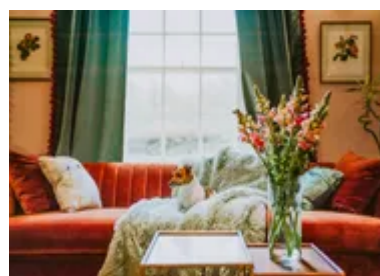
Guests can step directly into the estate's landscaped grounds, where gentle walks lead through woodland and gardens before opening out towards the coast. The nearby shoreline provides a striking contrast, with rugged cliffs, wide sea views and long stretches of unspoilt coastline ideal for walking and quiet observation. Wildlife is part of the experience here, with seabirds overhead and the chance to spot marine life offshore as you explore.

Despite the estate's peaceful atmosphere, local villages are within easy reach by car. These small coastal communities offer welcoming places to eat, independent shops and everyday amenities, all without the feel of a busy resort. The wider Dumfries and Galloway region is known for its unspoilt landscapes, historic sites and slower pace of life, making it particularly appealing for relaxed exploration.

Whether spending your days wandering the estate, walking along the coast or heading out for a leisurely meal nearby, the location of The Redwing offers a rare combination of privacy, access and natural beauty in one of Scotland's most quietly impressive coastal settings.

## Local Amenities

Nearest Airport	<b>Glasgow Airport</b> (157.5 km)
Nearest Bar/Pub	<b>Portpatrick</b> (3 km)
Nearest Beach	<b>Portpatrick Beach</b> (2 km)
Nearest Ferry Port	<b>Cairnryan</b> (24 km)
Nearest Golf	<b>Dunskey Golf Club, Portpatrick</b> (2.6 km)
Nearest Shop	<b>Gillespie John &amp; Sons Ltd General Store</b> (Gillespie John & Sons Ltd General Store)
Nearest Supermarket	<b>Morrisons, Stranraer</b> (11.2 km)
Nearest Town	<b>Stranraer</b> (12 km)



Nearest Train Station	<b>Stranraer Train Station</b> <b>(12.5 km)</b>
Nearest Village	<b>Portpatrick</b> <b>(2.5 km)</b>

---

## What we love

- The Redwing's unique location within the walled garden is a great place to get lost and escape the noise of daily life
- The Redwing is ideal for young families with 2 bedrooms, but why not bring you four-legged friends too? Please see the Ts&Cs for more information
- An array of services can be arranged from bespoke catering and in-lodge massages to bonfires by the beach, loch fishing, guided walks and so much more
- The pretty harbour town of Portpatrick is only 2 km away

## What you should know...

- The Redwing is located on the edge of a beautiful 2000-acre coastal estate, also home to an Edwardian castle and several upmarket lodges/apartments featured by Oliver's Travels. Please see Skylarke (<https://www.oliverstravels.com/britain-ireland/scotland/scottish-borders/skylarke/>), Little Sonata (<https://www.oliverstravels.com/britain-ireland/scotland/scottish-borders/little-sonata/>), Harpstone (<https://www.oliverstravels.com/britain-ireland/scotland/scottish-borders/harpstone/>), Resonance (<https://www.oliverstravels.com/britain-ireland/scotland/scottish-borders/resonance/>), Tempo Cottage, (<https://www.oliverstravels.com/britain-ireland/scotland/scottish-borders/tempo-cottage/>) Crescendo (<https://www.oliverstravels.com/britain-ireland/scotland/scottish-borders/crescendo/>) and Linnette (<https://www.oliverstravels.com/britain-ireland/scotland/scottish-borders/linnette/>).
- Guests of the estate can enjoy a range of wonderful services (for an additional charge) from bespoke catering to activities and experiences - please see the "Extras" tab for details.
- We recommend a car for guests staying in the area as local amenities are best reach by car due to the distance from villages and towns.
- The estate's gardens and grounds are currently only open to residents and guests (other than the hedge maze that is occasionally open to the public on special occasions). The estate may be open to the general public in the future – watch this space for more information

# Terms & Conditions

- **Security deposit:** No security deposit is required for this villa. Please be aware that guests are still required to leave the accommodation clean, tidy and in the same condition as on their arrival.
- **Arrival time:** 4:00 pm
- **Departure time:** 10:00 am
- **Energy costs included?:** Yes, included in the rental price
- **Linen & towels included?:** Yes, included in the rental price
- **Pets welcome?:** Up to two pets are welcome on request only and with prior agreement with the owner. If accepted, a pet supplement of £60 per pet per stay will apply.
- **Changeover day:** Flexible
- **End of stay cleaning:** Extra £175, payable to Oliver's Travels with the balance payment. Guests are required to leave the accommodation clean, tidy and in the same condition as on their arrival. Any extra cleaning, laundry, maintenance and/or rubbish disposal required will be charged against the security deposit.
- **Smoking Allowed?:** No smoking or vaping
- **Minimum stay:** 3 nights. 7 nights over Christmas.
- **Heating costs included?:** Yes, included in the rental price
- **Internet access?:** Yes, included in the rental rate