

Linnette

Region: Scottish Borders Sleeps: 6

Overview

Linnette is a spacious and welcoming three-bedroom lodge sleeping up to six guests, set deep within the wide-ranging grounds of an exceptional Scottish estate. The lodge looks out across open lawns and countryside that form part of a much larger, carefully preserved landscape, giving guests a genuine sense of space, privacy and immersion in nature. Staying here means having the freedom to enjoy expansive grounds, established gardens and peaceful open spaces as an extension of the home itself, rather than simply as a backdrop.

Inside, the lodge features an open and sociable layout that brings the living, dining and kitchen areas together. Underfloor heating and an open fireplace provide warmth and comfort throughout the year, while the fully equipped kitchen makes it easy to prepare meals and gather as a group. Each of the three bedrooms benefits from its own ensuite bathroom, offering privacy and convenience for friends or family sharing the space. The atmosphere is relaxed rather than formal, encouraging easy days and unhurried evenings after time spent exploring the estate's paths and grounds.

Outdoor living is an integral part of the experience at Linnette. A large open garden provides space for children to play freely and adults to unwind, with open views that reinforce the feeling of being part of a vast, tranquil setting. An outdoor bath offers a peaceful place to relax beneath open skies, while garden seating allows guests to take in the changing light and quiet rhythm of the estate. With its balance of comfort, freedom and access to an outstanding landscape, Linnette offers a memorable retreat for families and groups seeking a slower pace in an exceptional setting.

Facilities

Walking/Hiking Paths • Romantic • Golf Nearby • Fishing • Historical Sites
• Ideal for Kids • Special Offer • Has Discount • Ideal for Teens • Pets on Request • Beach Nearby • All Bedrooms En-Suite • Cottage • Parking Space • Wi-Fi/Internet • Country Estate • BBQ • Rural Location • Washing Machine • Outstanding Landscapes • Outdoor Pursuit & Activities • Microwave • Smart TV • Fire Pit • Ruins • Water excursions/Boat trips • Catering Available • On-Site Concierge • Bathroom Toiletries • Ideal for Babies & Toddlers



Interior & Grounds

Lodge Interior

Ground floor:

- Open-plan living space with sofa seating, TV, selection of books, open fireplace and tasteful décor.
- Fully equipped kitchen and dining area with enough seating for 6
- Bedroom 1: Double bed, ensuite bathroom with shower

First floor:

- Bedroom 2: Twin beds, ensuite bathroom with shower
- Bedroom 3: Double bed, ensuite bathroom with shower

Outside Grounds:

- Large open garden
- Outdoor bath
- Outdoor seating area
- Open lawn space suitable for children to play (with supervision)

Additional Facilities:

- Open fireplace
- BBQ
- Smart TV
- Wi-Fi
- Washing machine
- Estate toiletries and kitchen supply pack (sponge, dish soap, toilet roll, shampoo and conditioner, etc.)=



Location & Local Information

Linnette sits within extensive private grounds on Scotland's southwest coast, part of a remarkable estate defined by space, nature and a strong sense of freedom. Open lawns, woodland and landscaped areas surround the lodge, creating a safe and engaging environment for families, where children can explore and play while adults enjoy the calm of the setting. The estate's scale is immediately apparent and plays a key role in the relaxed, unhurried feel of each stay.

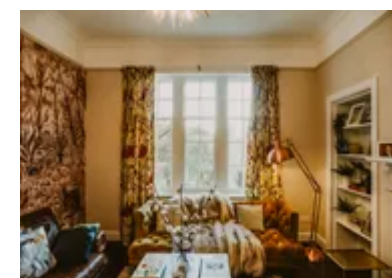
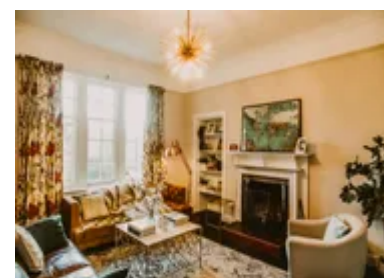
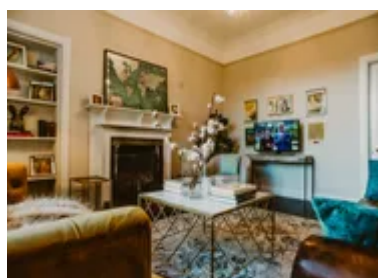
Just steps from the lodge is a large garden maze, a much-loved feature that adds a playful and memorable element for younger guests. This unique feature, combined with gentle paths and open spaces, makes it easy to spend full days close to home, enjoying family walks, scooter rides and outdoor games without the need to travel far. The grounds invite exploration at a pace that suits all ages.

The coastline lies within easy reach and offers a contrasting landscape of beaches, sea views and coastal paths. These unspoilt stretches of shore are ideal for fresh-air adventures, wildlife spotting and relaxed walks by the water, adding variety to days spent on the estate. The wider area is known for its natural beauty and slower rhythm, making it well suited to family breaks away from busy destinations.

Nearby villages are a short drive away and provide convenient access to cafés, pubs, small shops and everyday amenities. Together, the estate setting and surrounding area give Linnette a location that combines space, outdoor features and access to nature, creating an ideal base for families seeking a relaxed and enriching countryside stay.

Local Amenities

Nearest Airport	Glasgow Airport (157.5 km)
Nearest Bar/Pub	Portpatrick (3 km)
Nearest Beach	Portpatrick Beach (2 km)
Nearest Ferry Port	Cairnryan (24 km)
Nearest Golf	Dunskey Golf Club, Portpatrick (2.6 km)
Nearest Shop	Gillespie John & Sons Ltd General Store (2.5 km)
Nearest Supermarket	Morrisons, Stranraer (11.2 km)



Nearest Town	Stranaer (12 km)
Nearest Train Station	Stranraer Train Station (12.5 km)
Nearest Village	Portpatrick (2.5 km)

What we love

- Linnette is located a few steps away from the fun and unique maze, great fun for all ages.
- The lodge's layout makes it perfect for young families or groups of friends with 3 ensuite bedrooms, but why not bring you four-legged friends too? Please see the Ts&Cs for more information
- An array of services can be arranged from bespoke catering and in-lodge massages to bonfires by the beach, loch fishing, guided walks and so much more
- The pretty harbour town of Portpatrick is only 2 km away

What you should know...

- Linnette is located on the edge of a beautiful 2000-acre coastal estate, also home to an Edwardian castle and several upmarket lodges/apartments featured by Oliver's Travels. Please see Skylarke (<https://www.oliverstravels.com/britain-ireland/scotland/scottish-borders/skylarke/>), Little Sonata (<https://www.oliverstravels.com/britain-ireland/scotland/scottish-borders/little-sonata/>), Harpstone (<https://www.oliverstravels.com/britain-ireland/scotland/scottish-borders/harpstone/>), Resonance (<https://www.oliverstravels.com/britain-ireland/scotland/scottish-borders/resonance/>), Tempo Cottage (<https://www.oliverstravels.com/britain-ireland/scotland/scottish-borders/tempo-cottage/>), The Redwing (<https://www.oliverstravels.com/britain-ireland/scotland/scottish-borders/the-redwing/>) and Crescendo (<https://www.oliverstravels.com/britain-ireland/scotland/scottish-borders/crescendo/>).
- Guests of the estate can enjoy a range of wonderful services (for an additional charge) from bespoke catering to activities and experiences - please see the "Extras" tab for details.
- We recommend a car for guests staying in the area as local amenities are best reach by car due to the distance from villages and towns.
- The estate's gardens and grounds are currently only open to residents and guests (other than the hedge maze that is occasionally open to the public on special occasions). The estate may be open to the general public in the future – watch this space for more information

Terms & Conditions

- **Security deposit:** No security deposit is required for this villa. Please be aware that guests are still required to leave the accommodation clean, tidy and in the same condition as on their arrival.
- **Arrival time:** 4:00 pm
- **Departure time:** 10:00 am
- **Energy costs included?:** Yes, included in the rental price
- **Linen & towels included?:** Yes, included in the rental price
- **Pets welcome?:** Up to two pets are welcome on request only and with prior agreement with the owner. If accepted, a pet supplement of £60 per pet per stay will apply.
- **Changeover day:** Flexible
- **End of stay cleaning:** Extra £175, payable to Oliver's Travels with the balance payment. Guests are required to leave the accommodation clean, tidy and in the same condition as on their arrival. Any extra cleaning, laundry, maintenance and/or rubbish disposal required will be charged against the security deposit.
- **Smoking Allowed?:** No smoking or vaping
- **Minimum stay:** 3 nights. 7 nights over Christmas.
- **Heating costs included?:** Yes, included in the rental price
- **Internet access?:** Yes, included in the rental price