

# Wildflower Country House

**Region:** The South West **Sleeps:** 20

---

## Overview

Wildflower Country House is the kind of country home you stumble upon in a storybook, with its gabled roofline, bluebell-fringed lawns, and deep sense of peace. Built in 1906 and lovingly restored to honour its Arts & Crafts heritage, this nine-bedroom estate, with its charming adjoining cottage, welcomes up to twenty guests in soulful style. Set just a short stroll from the Jurassic Coast, the house is a haven for families, groups of friends, and anyone seeking countryside calm with character in spades.

Inside, the house is grand yet understated, timeless wooden floors, white walls, sash windows, and fireplaces that invite you to curl up beside them. On the ground floor, the drawing room, with deep sofas and a roaring fire, opens into the garden via double doors. The dining room seats a full house with ease, and the country kitchen, with its Aga, mahogany-topped island, and adjacent pantry, is built for hearty feasts and relaxed mornings. Up the oak staircase, you'll find five serene bedrooms and three bathrooms; the attic dormitory above sleeps four with its own shower room, while an en-suite bedroom on the ground floor ensures accessible comfort.

Across the courtyard, the beautifully converted stable cottage offers a self-contained retreat with three bedrooms, two bathrooms, a kitchen, and a fire-lit sitting room, perfect for early risers, grandparents, or anyone wanting a bit of space.

Step outside and you'll find a garden designed for living. A west-facing terrace with a long dining table and Argentinian barbecue is the place for sundowners and supper. There's a hard tennis court, croquet lawn, fruit trees, a paddock, and a footpath that leads you through fields and woods to the sea.

Wildflower Country House is more than a house, it's a place to gather, restore, and reconnect, whether you're fossil-hunting on Charmouth beach, climbing to the Golden Cap, or simply reading by the fire. With Lyme Regis and Bridport close by, and Dorset's rolling hills all around, you'll feel wonderfully removed, yet warmly at home.

## Facilities

Fishing • Walk to Village • Walking/Hiking Paths • Horse Riding • Ideal for Kids • Canoeing/Kayaking • Historical Sites • Tennis Nearby • Cycling • Sailing • Wine Tasting • Scuba Diving • Golf Nearby • Tennis Court • Paragliding • Boat Trips • Surfing • Manor • Has Discount • Ideal for Teens • Special Offer • Chef/Cook Available • Beach Nearby • <1hr to Airport • Parking Space • Wi-Fi/Internet • BBQ • Bath mat • Rural Location • Washing Machine • Outstanding Landscapes • Outdoor Pursuit & Activities • Hairdryer • Tourist Towns & Villages • Laptop Friendly



Workspace • Games Room • Dishwasher • Microwave • AGA • Smart TV  
• Outdoor Games • Table Football • Working Fireplace/Woodburner •  
Heating • Kid-friendly museum • Kid-friendly excursions • Forest  
park/High-rope course • Catering Available • Playground nearby • Board  
games • Tennis rackets • High Chair(s) • Fenced Grounds

# Interior & Grounds

## The House

### Ground Floor

- Boot room
- Study with piano, bookshelves, comfortable chairs
- Hallway
- Drawing room with log fire and deep sofas
- Dining room
- Well equipped kitchen with mahogany counters, kitchen island, two-oven Aga, electric hob and oven
- Laundry room and pantry

### First Floor

- Bedroom 1: King-size bed, ensuite bathroom
- Bedroom 2: King-size bed
- Bedroom 3: Double bed with ensuite shower room
- Bedroom 4: Double bed
- Bedroom 5: Double bed
- 3 Bathrooms

### Attic

- Bedroom 6: 4 Single beds, ensuite bathroom

## The Cottage

### Ground Floor

- Well equipped kitchen
- Sitting room with open fire
- Bedroom 7: Double bed, ensuite bathroom

### First Floor

- Bedroom 8: Double bed
- Bedroom 9: Double bed
- Bathroom

### Exterior

- West-facing terrace with long outdoor table and professional Argentinian asado BBQ
- Garden
- Apple orchard and paddocks
- Full-sized hard tennis court

## Additional Facilities

- Wi-Fi



- Table football
- Board games

# Location & Local Information

Set in the heart of the Dorset countryside and just a mile inland from the famous Jurassic Coast, Wildflower Country House is surrounded by a landscape shaped by time and teeming with charm. Think hedgerowed lanes, ancient woodlands, and hills with Iron Age crowns, all within walking distance of this peaceful manor house.

The nearest beaches are in Charmouth, a 20-minute walk or 5-minute drive. One is sandy and family-friendly; the other is a fossil-hunter's paradise, where the cliffs hold secrets from hundreds of millions of years ago. Slightly further along the coast lies Lyme Regis, with its famous Cobb harbour wall, quaint bookshops, galleries, and the celebrated Dinosaurland Fossil Museum.

Bridport is 10 minutes in the other direction, a market town with a laid-back arts scene, antique markets, and vibrant Saturday food stalls. There you'll also find cafés, bakeries, and independent shops aplenty. West Dorset's farm shops and fishmongers make self-catering a treat, while the area is home to several exceptional restaurants, from beachside bistros to Michelin-starred fare.

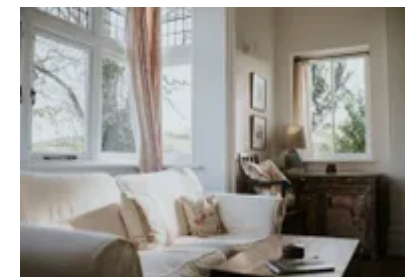
For walkers and cyclists, the surrounding Marshwood Vale offers winding lanes, footpaths, and panoramic sea views. Climb Golden Cap for a breathtaking vantage point, the highest point on the south coast, or explore the coastal trails and countryside pubs in the Area of Outstanding Natural Beauty.

Axminster, with direct rail links to London Waterloo, is just a 15-minute drive away, making Wildflower Country House remarkably accessible for such a secluded-feeling spot. Whether you're beachcombing, rambling, shopping for local cheese, or reading in the garden, the setting invites you to slow down and savour.



## Local Amenities

Nearest Airport	<b>Exeter Airport</b> (45 km)
Nearest Bar/Pub	<b>The Royal Oak Inn</b> (2.5 km)
Nearest Beach	<b>Charmouth Beach</b> (3 km)
Nearest City	<b>Dorchester</b> (39 km)
Nearest Ferry Port	<b>Plymouth Ferries</b> (122 km)
Nearest Golf	<b>Lyme Regis Golf Club</b> (4 km)



Nearest Restaurant	<b>The Anchor Inn, Seatown (9.5 km)</b>
Nearest Shop	<b>Nisa Local, Charmouth (2.5 km)</b>
Nearest Supermarket	<b>Tesco Express, Charmouth (6 km)</b>
Nearest Tennis	<b>On site (0 km)</b>
Nearest Town	<b>Lyme Regis (7 km)</b>
Nearest Train Station	<b>Axminster Train Station (9.5 km)</b>
Nearest Village	<b>Wootton Fitzpane (0 km)</b>

## What we love

- The west-facing terrace is perfect for long alfresco dinners under the stars, complete with a professional Argentinian BBQ and views across wildflower-dotted gardens.
- You can walk straight from the house through fields and footpaths to reach the fossil-rich beaches of Charmouth in under 25 minutes.
- With two kitchens, four reception rooms, tennis court, and cottage across the courtyard, it's made for big gatherings with space for everyone to spread out.

## What you should know...

- The house was built in 1906 and retains its period features, expect original floors, sash windows, and the occasional wonky step.
- There's no TV in the main drawing room by design, it's a space for chatting, reading, or just doing nothing at all.
- While the sea is within walking distance, the route is across fields and may not be suitable for all guests or prams.
- There is no cot available in the house, so you will need to bring a travel cot with you.

# Terms & Conditions

- **Security deposit:** £350 charged to client's credit card by Oliver's Travels as a pre-authorisation at least 2 weeks prior to arrival and refunded two weeks after departure, subject to full inspection.
- **Arrival time:** 4:00 pm
- **Departure time:** 10:00 am
- **Energy costs included?:** Yes, included in the rental price
- **Linen & towels included?:** Yes, included in the rental price
- **Pets welcome?:** On request only and with prior agreement with the owner.
- **Changeover day:** Fridays only
- **End of stay cleaning available?:** Standard changeover clean included in the price. Guests are required to leave the accommodation clean, tidy and in the same condition as on their arrival. Any extra cleaning, laundry, maintenance and/or rubbish disposal required will be charged against the security deposit.
- **Smoking Allowed?:** No smoking or vaping.
- **Minimum stay:** 2 or 3 nights. This is increased to 7 nights over school holidays.
- **Heating costs included?:** Yes, included in the rental price
- **Stag & Hen Do Allowed? :** Hen parties are allowed on request only and subject to prior arrangement with the owner. Stag parties are not allowed.