

The Georgian Wing

Region: East Of England Sleeps: 14

Overview

Discover the grandeur of a stately home with the comfort of a private retreat at The Georgian Wing, a magnificent residence within Norfolk's historic Wolterton Hall estate. This Regency-period gem, designed by George Stanley Repton, offers a rare blend of architectural beauty, elegant interiors, and serene parkland views.

Set across three spacious floors and crowned by a Tower bedroom with far-reaching lake vistas, The Georgian Wing sleeps up to 14 guests in 7 luxurious bedrooms. From the grand Drawing Room to the cinema-style Media Room and a banqueting kitchen with a 15th-century dining table, every space invites togetherness and celebration.

South-facing windows flood the interiors with natural light, while curated antiques, Persian carpets, and original artworks bring a refined character to every room. Outside, a private garden with a dining terrace and barbecue offers space to unwind in style.

Ideal for multigenerational families, milestone celebrations, or refined group escapes, a stay here also includes rare access to the grandeur of the main Hall. A truly unforgettable setting where heritage and hospitality meet.

Facilities

Cycling • Ideal for Kids • Manor • Ideal for Teens • Maid Service Available • Cots (Cribs) • Has Discount • Pets on Request • Special Offer • Beach Nearby • Heritage Collection • Wi-Fi/Internet • Rural Location • Washing Machine • Outstanding Landscapes • Outdoor Pursuit & Activities • Tourist Towns & Villages • Tumble Dryer • Dishwasher • Microwave • Heating • Catering Available • High Chair(s)



Interior & Grounds

Spanning four floors, including an enchanting tower suite, The Georgian Wing sleeps up to 14 guests across seven elegant bedrooms. Designed in the Regency period, the interiors are rich with historical character, Georgian mahogany furniture, Colefax & Fowler fabrics, Persian carpets. While offering modern touches for a relaxed, luxurious stay.

Lower Ground Floor

- Dining Room with parquet flooring, open fire, and 15th-century table seating 14
- Two double bedrooms (each with 4'6" beds)
- Family shower room with walk-in shower, basin, and WC
- Utility room
- Media Room with large TV, sound system, and cinema-style seating
- Back stairs to Ground Floor

Ground Floor

- Entrance Hall with flagstone flooring
- Large Smallbone-designed kitchen with double decommissioned Aga, Rangemaster cooker, two double fridge/freezers, two dishwashers, drinks cooler, microwave, plate warmer, Nespresso machine, oak flooring, and informal dining table for 8
- Double bedroom (4'6" bed) with south-facing views
- Double bedroom (4'6" bed) with en-suite bathroom (bath, basin, WC) and south-facing views
- Marble shower room with walk-in shower, basin, and WC
- Cloakroom with basin and WC
- Access to basement, back hall, and first floor via main and rear stairs

First Floor

- Drawing Room with open fire, TV with Freeview, Bluetooth sound bar, digital radio, and lake views
- Twin bedroom (2 x 3' beds) with lake views
- Four-poster super king bedroom with lake views
- Family bathroom with bath, separate walk-in shower, basin, and WC
- Back stairs to Tower level

Second Floor (Tower Suite)

- Tower bedroom with 4'6" double bed, seating area, and panoramic lake and garden views
- Bathroom with roll-top bath, walk-in shower, basin, and WC

Exterior Grounds

- Tranquil, spacious private garden adjoining the park
- Terrace with garden furniture seating 14, barbecue, and firepit
- Private parking



Location & Local Information

Set within the heart of one of Norfolk's grandest private estates, The Georgian Wing places guests within easy reach of North Norfolk's most enchanting landscapes and historic towns. Surrounded by 500 acres of parkland, lakes, and ancient woodland, the estate feels wonderfully remote. Designed by the renowned Charles Bridgeman, the gardens invite exploration, with winding paths that lead past ancient trees, classical statuary, and still ponds, offering moments of calm and surprise at every turn. Yet the charming towns of Holt, Aylsham, and Cromer are just a short drive away.

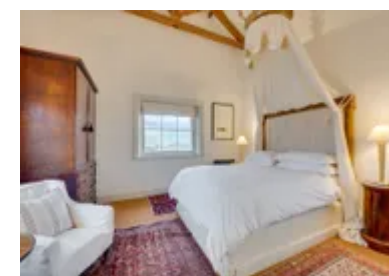
North Norfolk is a land of wide skies, timeless coastal scenes, and gentle rural rhythms. Families can enjoy classic beach days at Holkham or Brancaster, while walkers and nature lovers explore saltmarsh trails, winding creeks, and dark-sky evenings that invite quiet wonder.

Nearby, discover a vibrant food scene, from countryside inns like The Gunton Arms to fine dining at Morston Hall, alongside a rich tapestry of historic homes, mediaeval churches, and cultural outings in Norwich. Whether you're seeking seaside simplicity or stately grandeur, The Georgian Wing offers the perfect base to explore it all.

Families can enjoy traditional seaside days at Holkham or Brancaster, rock-pooling at West Runton, or steam train rides on the North Norfolk Railway. Cultural highlights include the Norwich Theatre Royal, Sheringham Little Theatre, and the world's last end-of-pier show at Cromer Pavilion Theatre. History lovers will enjoy visits to Blickling Hall, Felbrigg, Holkham, and Norwich Castle.

Local Amenities

Nearest Airport	Norwich International Airport (25 km)
Nearest Bar/Pub	The Saracens Head Pub (1 km)
Nearest Beach	Overstrand Beach (16 km)
Nearest City	Norwich (44 km)
Nearest Restaurant	The Blind Pig (8 km)
Nearest Town	Roughton Road Train Station (14.5 km)



What we love

- The magnificent tower suite with panoramic views over the lake and walled gardens, a true standout.
- Access to 500 acres of historic parkland, plus optional on-site activities like canoeing, clay pigeon shooting, and paddle boarding on the lake can be arranged at extra cost in advance
- Beautifully restored interiors that blend Regency elegance with luxurious comfort. Perfect for special gatherings.

What you should know...

- Bedrooms feature traditional double beds (4'6"), which may feel compact for guests used to king-size.
- The tower bedroom is on the top floor, accessed via stairs, not suitable for those with mobility concerns.
- A car is recommended to explore the coast, local towns, and nearby stately homes with ease.
- While dogs are welcome (max. 2), there is an additional fee and some estate areas may be off-limits.

Terms & Conditions

- **Security deposit:** £500 charged to client by the owner one month before/upon arrival and refunded two weeks after departure, subject to full inspection.
- **Arrival time:** From 3:00 pm
- **Departure time:** Before 10:00 am
- **Energy costs included?:** Yes
- **Linen & towels included?:** Yes
- **Pets welcome?:** Yes, a maximum of 2 dogs are welcome on request, and are subject to an additional £50 charge per pet per stay.
- **Other Ts and Cs:** Please bring your own Nespresso pods
- **Changeover day:** Flexible
- **End of stay cleaning:** Standard changeover clean included in the price. Guests are required to leave the accommodation clean, tidy and in the same condition as on their arrival. Any extra cleaning, laundry, maintenance and/or rubbish disposal required will be charged against the security deposit.
- **Smoking Allowed?:** No
- **Other 2:** Foldaway bed available for older children (£75 per stay incl. linen and towels)
- **Other 3:** Travel cot, stair gate, and high chair available on request (bring your own cot linen)
- **Minimum stay:** 2 or 3 nights
- **Heating costs included?:** Yes
- **Internet access?:** Yes