

Villa La Gemma Bianca

Region: Tuscany Sleeps: 10

Overview

In the historic Tuscan town of Empoli, Villa La Gemma Bianca offers an elevated private retreat for those seeking space, comfort and elegance. This prestigious early 20th century residence is set within beautiful private parkland, where manicured greenery frames an elegant architectural statement that balances heritage with modern living.

A cypress-lined approach leads to over 700 square metres of refined interiors arranged across four levels, all connected by a marble staircase and a private internal lift. Generous living spaces feature polished wooden floors, boiserie details and carefully chosen furnishings. The main floor is designed for relaxed gatherings, with a welcoming living room and fireplace, a TV lounge, a fully equipped professional kitchen and a charming twin bedroom with en-suite bathroom.

The upper floor is dedicated to rest and privacy. Three spacious double bedrooms each benefit from their own en-suite bathroom, finished to a high standard. The master bedroom forms a private haven, complete with a sitting area, walk-in wardrobe and a beautifully appointed bathroom with a circular bathtub. Above, a large attic level provides an independent open-plan loft with kitchen, living area and double bed, ideal for guests who appreciate additional autonomy.

Wellbeing takes centre stage on the lower level, where a private spa sanctuary awaits. A professional gym, sauna, hammam and Turkish bath with chromotherapy create a complete wellness experience in total privacy. Throughout the villa, air conditioning, underfloor heating, an integrated sound system and fibre Wi-Fi ensure year-round comfort.

Outside, the striking swimming pool is finished in shimmering mother-of-pearl tiles and edged by a marble terrace. Its telescopic cover and panoramic glass veranda allow seamless enjoyment in every season, with the veranda offering an atmospheric setting for dining or quiet evenings overlooking the illuminated water (charges apply for seasonal pool and veranda heating).

Set in central Empoli, the villa is within walking distance of shops, restaurants and cultural attractions, while Florence is just 30km away. Vinci, San Miniato, Pisa and the Chianti vineyards are all within easy reach, making Villa La Gemma Bianca a superb base from which to explore the richness of Tuscany in privacy and luxurious comfort.

Facilities

Romantic • Cycling • Historical Sites • Walk to Village • Villa • Wellness • Air-Con • Walking/Hiking Paths • Horse Riding • Wine Tasting • Private



Pool • Chef/Cook Available • Cots (Cribs) • Heated Pool • Pets on Request
• All Bedrooms En-Suite • Instagrammable • <1hr to Airport • Walk to
Restaurant • Parking Space • Wi-Fi/Internet • Washing Machine • Coffee
Machine • Outstanding Landscapes • Hairdryer • Outdoor Pursuit &
Activities • Tourist Towns & Villages • Spa/Massage • TV • Lift • Laptop
Friendly Workspace • Gym/Fitness Room • Tumble Dryer • Dishwasher •
Microwave • Sauna/Steam • Working Fireplace/Woodburner • Heating •
Kid-friendly museum • Cooking Classes Available • Theme park • Wine-
Tasting Available • Transfers Available • High Chair(s) • Fenced Grounds

Interior & Grounds

House Interiors (700m2, four levels)

Main Level (via staircase)

- Main entrance with marble staircase and lift
- Living room with fireplace
- TV lounge
- Dining room
- Kitchen, fully equipped including oven, dishwasher, microwave, coffee machine, kettle, toaster, blender, fridge-freezer
- Bedroom 1 with two single beds (90x190cm each) and en suite bathroom

First Floor

- Master bedroom with queen-size double bed, sitting area, walk-in wardrobe and bathroom with round bath tub
- Bedroom with queen-size double bed and en suite bathroom
- Bedroom with queen-size double bed and en suite bathroom

Attic (sloping ceilings)

- Independent open-plan loft space with kitchen-diner, living area, queen-size double bed, terrace and en suite bathroom

Lower Ground Floor

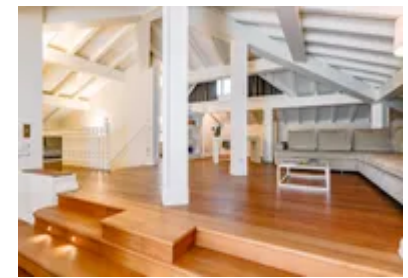
- Private spa with professional gym, Starpool sauna, hammam, Turkish bath with chromotherapy, emotional shower and lounge area

Outside Grounds (1800m2)

- Swimming pool (10m x 6m, max depth: 1.5m) with hydromassage feature. Pool heating available on request from April to October only for outdoor use. Counter-current swimming system available on request, subject to an extra cost. Use of telescopic pool cover is available on request, subject to extra cost. Pool is open year round
- Poolside marble terrace with sun loungers and outdoor shower
- Veranda (180m2, connected to pool area via glass doors) with long table, sofas and sound system (veranda heating subject to a supplement)
- Parkland with trees
- Private parking

Facilities

- Wi-Fi
- Air-conditioning
- Underfloor heating
- Lift inside building
- Sound system



Location & Local Information

La Gemma Bianca enjoys a wonderfully convenient setting in the historic Tuscan town of Empoli, a place where authentic local life meets rich cultural heritage, only 30km from Florence.

Empoli is known for its handsome historic centre, centred around Piazza Farinata degli Uberti, where elegant palazzi, inviting cafés and traditional restaurants create a welcoming atmosphere. Wandering its streets offers a true taste of Tuscany, far removed from the crowds of the larger cities. It's around a 10 to 15-minute stroll to the heart of the town centre, whilst a good-sized supermarket is less than 500m away.

Empoli is steeped in history, with roots stretching back to Etruscan and Roman times. Visitors can explore the Collegiate Church of Sant'Andrea, browse local shops selling Tuscan produce and ceramics, or enjoy relaxed evenings sampling regional cuisine and wines. With excellent rail and road connections, Empoli serves as both a destination in its own right and a practical base for exploring the region.

From here, the artistic splendour of Florence (30km) is easily reached by car or train. A day trip opens the door to world-class museums, Renaissance architecture and iconic landmarks such as the Duomo and Ponte Vecchio.

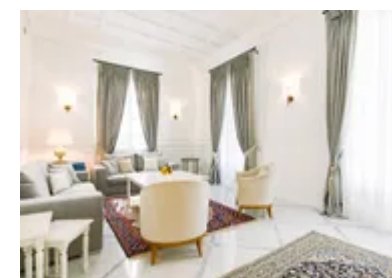
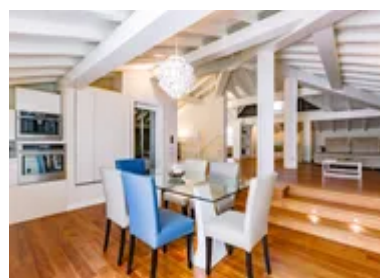
Closer to home, a collection of charming Tuscan villages awaits. San Miniato (11km) is famed for its hilltop views and historic streets, while Vinci (11km), birthplace of Leonardo da Vinci, offers fascinating museums and scenic walking routes through olive groves and vineyards.

For longer excursions, San Gimignano (43km) and Siena (80km) showcase medieval Tuscany at its finest. The Chianti vineyards, Pisa, Montecatini Terme and the rolling Chianti hills are all easily reached within an hour, making Villa La Gemma Bianca an ideal base for discovering Tuscany's most treasured sights.



Local Amenities

Nearest Airport	Florence Airport (30km)
Nearest Airport 2	Pisa Airport (55km)
Nearest Airport 3	Bologna Airport (118km)
Nearest Bar/Pub	Empoli (Under 1km)
Nearest City	Florence (30km)
Nearest Ferry Port	Livorno (65km)



Nearest Golf	Bellosguardo Golf Club (15km)
Nearest Restaurant	Empoli (Short walk)
Nearest Supermarket	Coop (Under 1km)
Nearest Tennis	Empoli Tennis Club (2.5km)
Nearest Town	Empoli historic centre (Within 1km)
Nearest Train Station	Empoli train station (1km)
Nearest Village	Empoli (Under 1km)

What we love

- Set within beautiful private parkland in the heart of historic Empoli, offering rare space, privacy and elegance within walking distance of shops, restaurants and cultural sights
- Refined interiors with ornate detailing, beautiful furnishings and gorgeous en suite bedrooms
- The private spa features a professional gym, sauna, hammam and Turkish bath with chromotherapy for total relaxation in complete privacy
- The striking swimming pool, finished in mother-of-pearl tiles, can be enjoyed year-round thanks to its telescopic cover and panoramic glass veranda
- An excellent Tuscan base, with Florence just 30km away and easy access to Vinci, San Miniato, Pisa and the Chianti vineyards

What you should know...

- The pool has multiple features that are available on request, subject to extra charges. Heating of the pool is available on request (April to October when the telescopic cover is not in use). The counter-current swimming system is available on request. The pool's telescopic cover and heating of the veranda is available on request, allowing you to enjoy the pool and its surroundings in cooler months. All features are subject to an extra cost, please see the "T&Cs" tab for details. Please note at least 48 hours' notice is required to activate these services.
- A car is highly recommended to explore the local area.
- A highchair and cot are available upon request and subject to an extra cost.
- Please note the attic room features sloped ceilings.

Terms & Conditions

- **Security deposit:** €2000 charged to client's credit card as a pre-authorisation at least 2 weeks prior to arrival and refunded two weeks after departure, subject to full inspection.
- **Arrival time:** 4.00 p.m. to 8.00 p.m. Check-in outside this time may be subject to an extra cost. Please enquire for more details.
- **Departure time:** 10.00 a.m. Check-out outside this time may be subject to an extra cost. Please enquire for more details.
- **Energy costs included?:** Yes.
- **Linen & towels included?:** Yes.
- **Pets welcome?:** On request only and with prior agreement with the owner. If accepted, a pet supplement of €70 per pet per week will apply (payable locally).
- **Other Ts and Cs:** Please note home security devices may be installed at the villa, please enquire for further information.
 Weddings, stag/hen parties and any special events are on request only and subject to prior arrangement with the owner and additional charges.
 A highchair and cot are available upon request and subject to an extra cost.
- **Changeover day:** Flexible.
- **End of stay cleaning available?:** Yes. However, guests are required to leave the accommodation clean, tidy and in the same condition as on their arrival. Any extra cleaning, laundry, maintenance and/or rubbish disposal required will be charged against the security deposit.
- **Smoking Allowed?:** Outside only.
- **Minimum stay:** 4 nights. All other durations on request.
- **Heating costs included?:** Yes.
- **Pool heating charge?:** Extra €800 per week (payable locally) for pool heating (April to October when the telescopic cover is not in use). Extra €1,300 per week (payable locally) for the pool's telescopic cover and heating of the veranda. The counter-current swimming system is available on request, for an extra €250 per week (payable locally). Please note at least 48 hours' notice is required to activate these services. Please note that like all heated pools, pool heating and water temperature are reliant on weather and outside temperatures. Owners will operate heating as advertised, but specific temperatures can't be guaranteed. No compensation applies where weather affects pool heat.
- **Tax:** Italian Visitors Tax payable locally in cash (typically costs €1-€10 per person per night - please enquire if exact amount is required).
- **Internet access?:** Wi-Fi internet access included.
- **Pool towels included?:** Yes.
- **Pool opening dates?:** The pool is open year round. Please note that pool opening dates are subject to local weather conditions and pool maintenance requirements and that cooler months may not be suitable for swimming.