

Viceroy Ombria Algrave - Two Bedroom Residence with Pool

Region: Viceroy Ombria Algrave **Sleeps:** 4

Overview

Viceroy at Ombria Algrave is a polished countryside resort residence for guests who want space, privacy and hotel-level facilities in one of the Algarve's most scenic inland settings. The Two Bedroom Residence with Pool offers 2,917 ft² of open-plan living, Mediterranean-inspired interiors, floor-to-ceiling windows, a shaded furnished terrace and a private pool overlooking the valley, resort or golf course. Inside, guests have a king bedroom, a second bedroom with two queen beds, a kitchenette, a sofa bed and a marble-style bathroom with double vanity, soaking tub and rain shower.



Days here can be as active or low-key as guests choose, with access to the resort's spa, four pools, restaurants and bars, 18-hole Par 71 golf course, cycling routes, kids' club and local experiences. Faro Airport is around 25 minutes away, making this a strong choice for families, couples or friends seeking a refined Algarve base without staying directly on the coast.

Facilities

Horse Riding • Resort • Golf Villa • Wellness • Cycling • Tennis Nearby • Historical Sites • Walking/Hiking Paths • Private Pool • Wine Tasting • Air-Con • Has Discount • Special Offer • <1hr to Airport • Wi-Fi/Internet • Outstanding Landscapes • Coffee Machine • Outdoor Pursuit & Activities • Spa/Massage • Tourist Towns & Villages

Interior & Grounds

Residence Interiors

- Open-plan furnished living space with sofa bed
- Floor-to-ceiling windows with sheers and blackout curtains
- Kitchenette with coffee machine
- Bedroom with king-size bed
- Bedroom with 2 x queen-sized beds
- Marble-style bathroom with double vanity, bathtub and rain-shower

Exteriors

- Private pool with shaded, furnished terrace

Additional Facilities

- Wi-Fi
- Air conditioning

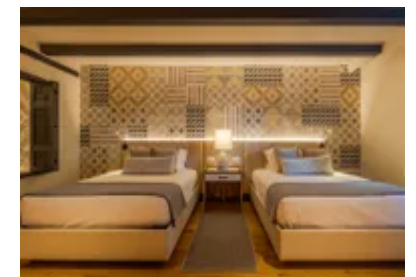
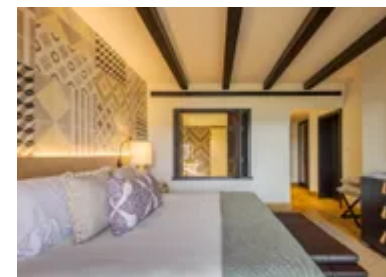
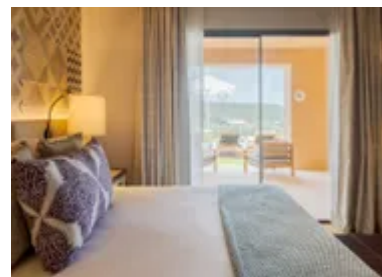
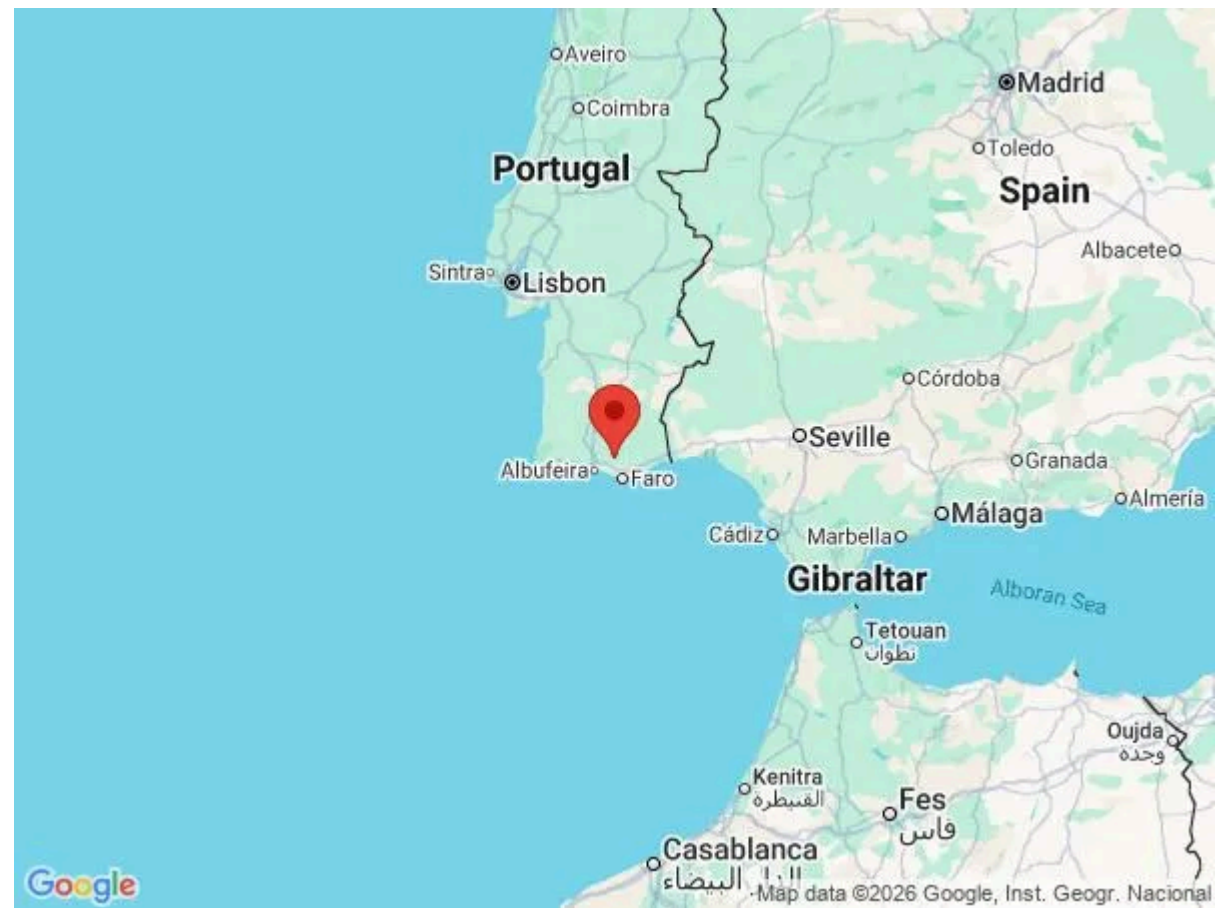


Location & Local Information

Viceroy at Ombria Algarve sits in Tôr, close to Loulé, surrounded by the hills, citrus groves and countryside of the inland Algarve. It is a good fit for guests who want easy access to the region's beaches while staying somewhere calmer and more connected to local culture. The resort is around 20 minutes from the Algarve coast, approximately 25 minutes from Faro Airport and around 25 minutes from Loulé Train Station. The A22 is less than 10 minutes away, giving guests straightforward road access across the Algarve and towards Lisbon or Spain. On-site, guests can enjoy golf, spa time, dining, pools, walking, biking and curated local experiences, while seasonal beach transfers make coastal days easy to arrange.

Local Amenities

Nearest Airport	Faro Airport (28km)
Nearest Beach	Praia de Loulé Velho (22km)
Nearest City	Faro (28km)
Nearest Golf	Onsite (850m)
Nearest Restaurant	Onsite (5m)
Nearest Tennis	Loulé Tennis Club (10km)



What we love

- The private pool and shaded terrace give guests their own outdoor space while still having resort facilities close by.
- Families are well supported, with a kids' club, babysitting, pools and flexible sleeping arrangements.
- The setting offers a different side of the Algarve, with golf, countryside, spa time and beach access all within easy reach.

What you should know...

- Kids Club includes one complimentary hour per child; extra time and babysitting are charged locally.
- Children under four must be accompanied by a parent or babysitter in the Kids Club.
- Beach shuttle and sunbed access are seasonal, available May to September.

Terms & Conditions

- **Security deposit:** A security deposit may be required for this property - please enquire for more details.
- **Arrival time:** 3.00 p.m.
- **Departure time:** 12.00 p.m.
- **Energy costs included?:** Included in rental price.
- **Linen & towels included?:** Included in rental price.
- **Pets welcome?:** On request only and with prior agreement with the owner (up to 30kg). If accepted, a pet supplement of €50 per pet per day will apply (payable locally).
- **Changeover day:** Flexible.
- **Smoking Allowed?:** Not allowed.
- **Minimum stay:** 2 nights.
- **Tax:** Portuguese Visitors Tax payable locally in cash (typically costs €1-€10 per adult per night - please enquire if exact amount is required).