

Tonwell Tower

Region: The South East Sleeps: 8

Overview

Rising 23 metres above the Hertfordshire countryside, Tonwell Tower is a remarkable architectural conversion just under an hour from London. Originally built in 1964 as a Brutalist water tower, this Grade II listed landmark has been reimagined as a four-bedroom private home, offering a stay that is as design-led as it is memorable.

Sleeping up to eight guests, the tower unfolds across six levels, with more than 1,600 sq ft of living space connected by spiral staircases. At its summit, the former water tank has been transformed into a dramatic open-plan kitchen, dining and living space framed by expansive glazing and far-reaching views that stretch across fields and as far as the City of London skyline. Four flexible en-suite bedrooms (each arranged as doubles or twins) ensure comfort and privacy for every guest.

Mid-century Danish furniture sits alongside carefully integrated modern technology, from underfloor heating and smart lighting to high-spec kitchen appliances and sustainability-led bathroom design. A generous roof terrace crowns the experience, with the option of an eight-person hot tub for soaking beneath open skies.

For celebratory weekends, multi-generational gatherings or design-focused escapes, Tonwell Tower offers something truly distinctive.

Facilities

Golf Nearby • Not for little ones • Walking/Hiking Paths • Historical Sites • Special Offer • Has Discount • Quirky (Unique) • Wow Factor • Instagrammable • Modern • <1hr to Airport • Heritage Collection • Parking Space • Wi-Fi/Internet • Rural Location • Washing Machine • Coffee Machine • TV • Laptop Friendly Workspace • Indoor Games • Tumble Dryer • Dishwasher • Microwave • Smart TV • Fenced Grounds



Interior & Grounds

Tonwell Tower spans six levels connected via two hand-built spiral staircases, with over 100 steps leading from ground floor to roof terrace. The accommodation is arranged vertically, culminating in the former water tank at the top of the tower.

Ground Floor

- Entrance hall

Level One

- Small home office/study area
- Laundry/Utility Space

Level Two

- 2 Double/twin bedroom with en-suite bathroom

Level Three

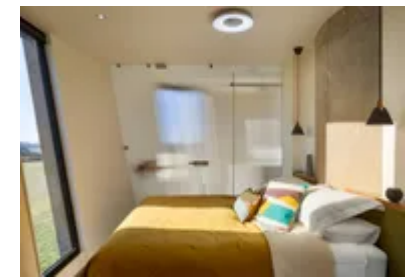
- 2 Double/twin bedroom with en-suite bathroom

Top Floor (Former Water Tank – 60sqm Open-Plan Living Space)

- Fully equipped high-spec kitchen (Bora induction hob, Siemens oven, espresso machine, Quooker tap, dishwasher)
- Central dining area
- Lounge space with 72-inch HDTV, Apple TV and integrated sound system
- Floor-to-ceiling glazing with panoramic countryside views
- Roof Terrace (80sqm) Expansive roof terrace with far-reaching views

Amenities

- Wi-Fi connection
- Underfloor heating throughout
- Smart lighting, blinds and climate control
- Air-source heat pumps & MVHR system
- Washing machine and dryer
- Private garden (fully fenced)
- Private parking (multiple cars)
- Exterior security cameras (garden/entrances only)



Location & Local Information

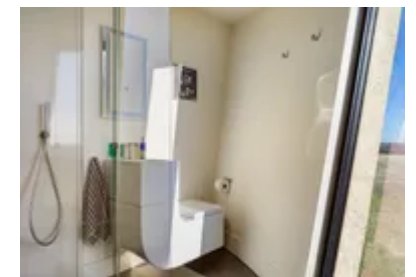
Set on the edge of the tiny village of Tonwell in East Hertfordshire, the tower enjoys a rural position while remaining remarkably well connected. Surrounded by open fields, woodland and public footpaths, the area lends itself to long walks, cycle routes and pub lunches in neighbouring villages such as Watton-at-Stone, Thundridge and Bramfield.

Despite its countryside setting, London is within easy reach, around 30 minutes by train from nearby Stevenage to St Pancras, and under an hour by car. Cambridge is also within an hour, making Tonwell Tower ideal for guests travelling from either city.

The surrounding area offers a wide variety of activities, from golf courses and country estates such as Knebworth House and Hatfield House, to Warner Bros. Studio Tour, nature reserves and the Lea Valley leisure attractions. Luton and Stansted airports are both within 40 minutes, with Heathrow just over an hour away.

Local Amenities

Nearest Airport	London Luton Airport (32 km)
Nearest Airport	Stanstead Airport (32 km)
Nearest Bar/Pub	The Woodman (2.4 km)
Nearest Bar/Pub	The Bull (5 km)
Nearest Bar/Pub	The Grandison (9 km)
Nearest Restaurant	Maltons (4.5 km)
Nearest Supermarket	Tesco Superstore (7.9 km)
Nearest Supermarket	ASDA (4 km)
Nearest Supermarket	Waitrose or M&S (16 km)
Nearest Train Station	Hertford North (6.6 km)
Nearest Train Station	Hertford East (6.8 km)



Nearest Train Station	Stevenage (14 km)
Nearest Village	Tonwell
Sightseeing	Whipsnade Zoo (52 km)
Sightseeing	Hertfordshire Zoo (14 km)
Sightseeing	Hatfield House (17.5 km)
Sightseeing	Henry Moore Studios & Gardens (15.5 km)

What we love

- The dramatic top-floor living space set inside the original water tank, with panoramic views stretching across Hertfordshire and towards the London skyline.
- The thoughtful blend of mid-century Danish design and cutting-edge technology, creating a stay that feels both characterful and highly considered.
- The expansive roof terrace, and optional eight-person hot tub, offering an unforgettable setting for sunset drinks or late-night soaks under open skies.

What you should know...

- The tower spans six levels with over 100 steps and two spiral staircases. There is no lift, and accessibility is very limited.
- The rooftop hot tub is available on request and may not always be operational, please enquire prior to booking.
- While the setting is rural, a car is recommended for full flexibility as public transport options in the village are limited.
- Close supervision is essential for young children due to the height, staircases and roof terrace.

Terms & Conditions

- **Security deposit:** £500 charged to client's credit card by the owner as a pre-authorisation one month before/upon arrival and refunded two weeks after departure, subject to full inspection.
- **Arrival time:** 4.00 pm
- **Departure time:** 10.00 am
- **Energy costs included?:** Yes
- **Linen & towels included?:** Yes
- **Pets welcome?:** Yes, £40 per dog/per stay. 2 dog max allowed.
- **Changeover day:** Flexible
- **End of stay cleaning:** Standard changeover clean included in the price. Guests are required to leave the accommodation clean, tidy and in the same condition as on their arrival. Any extra cleaning, laundry, maintenance and/or rubbish disposal required will be charged against the security deposit.
- **Heating costs included?:** Yes
- **Internet access?:** Yes
- **Stag & Hen Do Allowed? :** Yes